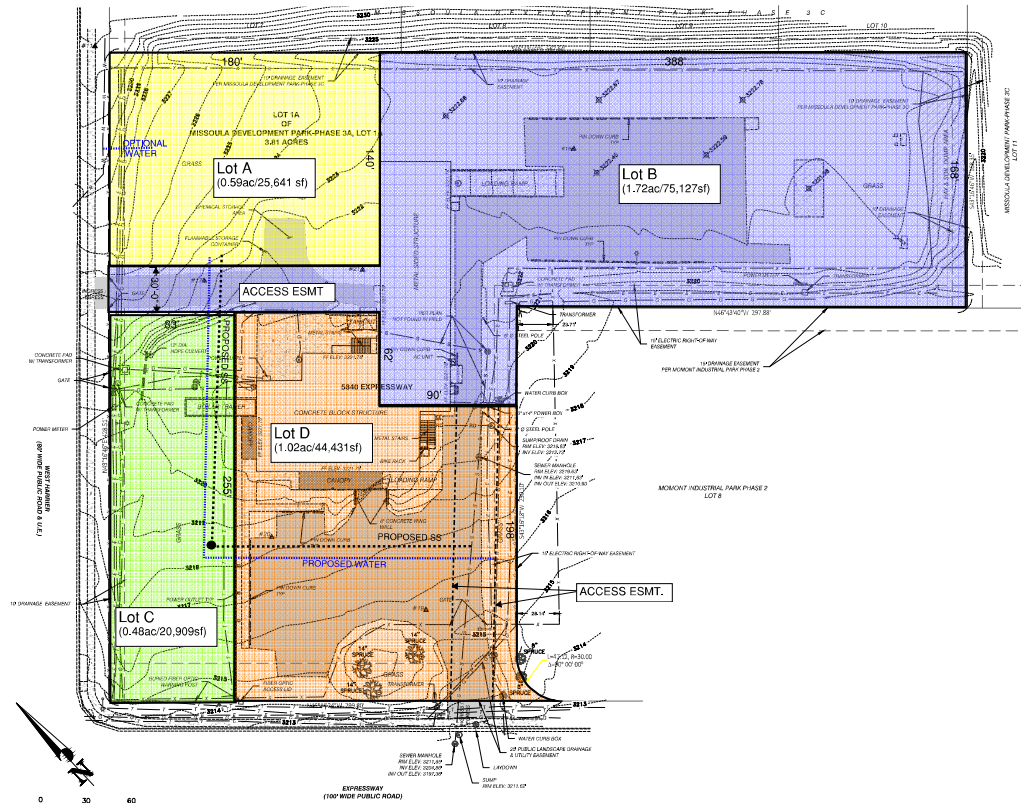


5840 EXPRESSWAY - PROPOSED 4 LOT MINOR SUBDIVISION



LEGEND

- STORM DRAIN CULVERT
- ROOF DRAIN
- GAS LINE
- UNDERGROUND POWER LINE
- TELEPHONE LINE
- FIBRE LINE
- 'C' CURB
- SPRINKLER HYDRANT
- MANHOLE COVER
- STORM DRAIN MANHOLE
- DRAINAGE BUMP
- GAS METER
- ELECTRIC RISER
- TELEPHONE RISER
- LIGHT POLE
- SIGN
- MAILBOX
- CONTOUR LINES
- TREES
- BUSH
- ASPHALT
- CONCRETE
- U.G. UTILITY EASEMENT

SURVEY CONTROL

Point #	Elevation	Northing	Easting	Description
11	3232.98	100806.051	828123.686	MAC NAIL
16	3222.85	100804.580	828307.824	MAC NAIL
17	3222.70	100804.569	828202.522	MAC NAIL
19	3215.49	100808.382	828027.864	MAC NAIL
20	3218.14	100809.378	828086.263	SPICE
21	3221.28	100810.046	828101.428	SPICE

SCALE IN FEET
 0 30 60
 CONTOUR INTERVAL: 1' AND 5'
 JUNE 12, 2019

Professional Consultants Inc.

Project #	8906-19
Drawn	SD
Checked	SD
Project	
Address	

3115 40TH ST. S.W. 170 S. 2ND ST.
 SUITE 110 WILLOW GROVE, MN 55127
 TEL: 763-438-2200 FAX: 763-438-2202
 WWW.PCI-CORP.COM
 PROJECT: 8906-19

PREPARED AT THE REQUEST OF: SOCATI CORPORATION
 PCI PROJECT: 8906-19

HORIZONTAL DATUM:
 MONTANA 2000 STATE PLANE GRID COORDINATE SYSTEM
 VERTICAL DATUM:
 NORTH AMERICAN VERTICAL DATUM OF 1988 (NAVD83)