



GUILDCREST ESTATES



Brenan House, 21 Vale Square, Ramsgate CT11 9DF



GUILDCREST ESTATES

Vale Square, Ramsgate CT11
9DF

Offers in excess of £865,000

Brenan House, 21 Vale Square, Ramsgate is an impressive Grade II listed Georgian property and former care home, offering substantial and versatile accommodation arranged over multiple floors within a sought-after conservation area. Extending to approximately 6,200 sq ft, the property comprises of 12 bedrooms, lift access across the principal floors, 2 large reception rooms, and a range of en-suites and a separate bathroom. Many of the facilities are designed with accessibility in mind, including wheelchair-accessible showers and bath, making the property well-suited for continued care (currently classified C2 usage), conversion into apartments, a boutique hotel/guest house, or an impressive family home (subject to change of use). The possibilities are endless with Brenan House.

The basement houses a fully equipped commercial kitchen which received a 5-star Food Hygiene rating, alongside a pantry, two additional storerooms, and a laundry room fitted with 2 industrial washing machines and dryer.

The lower ground floor features two spacious ensuite bedrooms, 3 separate WC's, and a comfortable lounge with a serving station, leading through to a bright conservatory housing the dining room, which overlooks the gardens. This level also includes access to a





clinical treatment room / hairdressing area for residents.

Across the ground, first, and second floors are ten further bedrooms, an additional lounge with Victorian casement doors opening onto a balcony, with views across the communal gardens of Vale Square and of Christ Church. The top floor offers a self-contained apartment, comprising of a bedroom with an en-suite and an open-plan lounge/kitchen.

Externally, the property benefits from a well-maintained rear garden and an outbuilding with power, which is currently used as an office and an additional storage area.

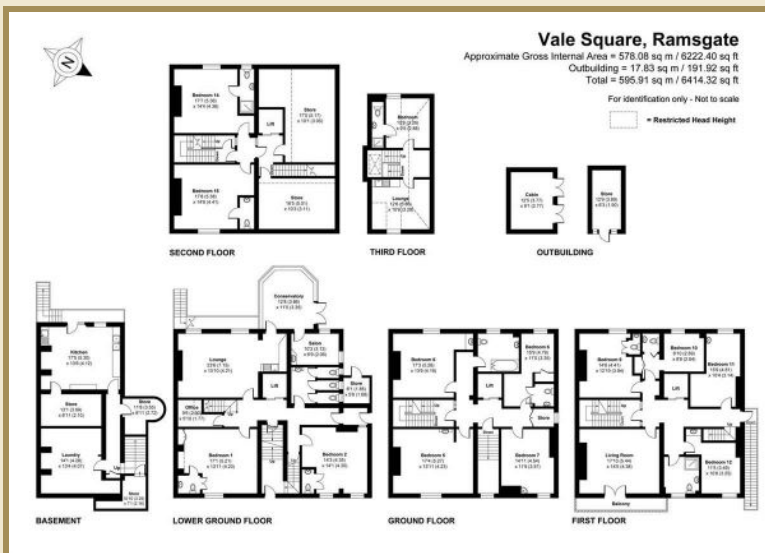




GUILDCREST ESTATES

Key Features

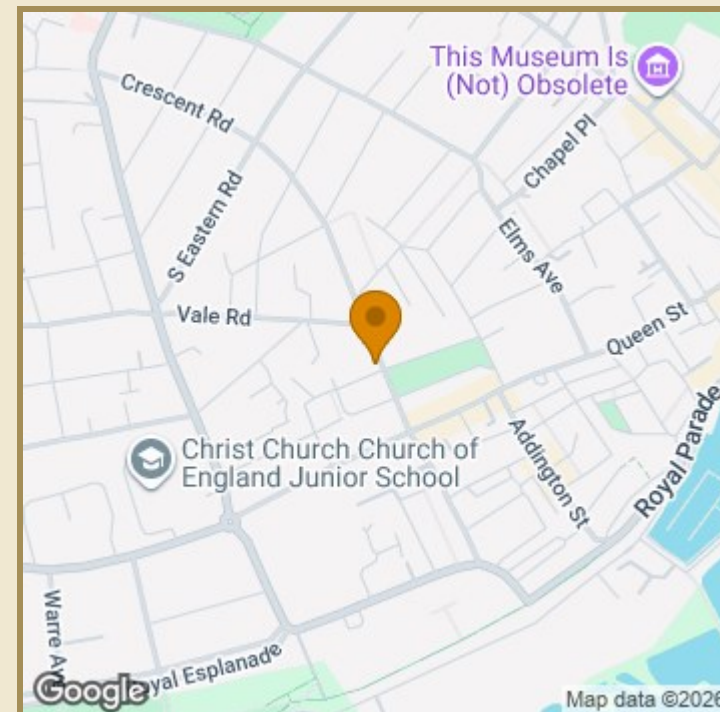
- Investment opportunity - Former care home, now closed with C2 usage in place
- Could also be converted into apartments, a boutique hotel, guest house or a Grand private residence, subject to planning
- 6 ensuite bedrooms, one bathroom, two shower rooms and a wet room
- Reception rooms and office spaces offering flexible use
- Lift access from the lower ground floor to the second floor, ideal for disabled accessibility requirements
- Nurse call system, Emergency Lighting and Fire Safety Equipment in place
- Located within a conservation area, adjacent to Vale Square Gardens and Christ Church
- Ramsgate Royal Harbour and Clifftop walks on the Royal Esplanade close by
- Ramsgate Train close by with fast trains into London taking approximately 1 hour 12 mins



Important Information

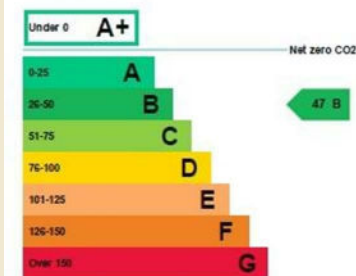
Freehold
House - Semi-Detached
6222.40 sq ft
Council Tax Band G
EPC Rating B

£865,000



Energy rating and score

This property's energy rating is B.



1 The Laurels, Manston Business Park, Ramsgate, Kent CT12 5NQ

Disclaimer These particulars, whilst believed to be accurate are set out as a general outline only for guidance and do not constitute any part of an offer or contract. Intending purchasers should not rely on them as statements of representation of fact, but must satisfy themselves by inspection or otherwise as to their accuracy. No person in this firm's employment has the authority to make or give any representation or warranty in respect of the property.