



Quail Springs Parkway Plaza

14000 Quail Springs Parkway, Oklahoma City, OK 73134

WIGGIN
PROPERTIES, LLC
40 YEARS STRONG

Quail Springs Parkway Plaza

14000 Quail Springs Parkway, Oklahoma City OK 73134

WIGGIN
PROPERTIES, LLC

At-a-Glance

Type:	Multi-tenant Office	
Class:	A	
Building Size:	298,610 SF	
Towers:	East	West
Floor Plates:	17,000 - 33,000 SF	18,000 - 25,000 SF
Stories:	6	6
Submarket:	Memorial Corridor	
Parking:	Underground and Surface	
Management:	On-site with full-time office and maintenance staff	
Ownership:	Locally-owned	



Quail Springs Parkway Plaza

The property is a Class A office complex prominently located along the Memorial Road Corridor within the Quail Springs Corporate Park. The complex includes two office towers attached via a one-story, entrance plaza and lobby as well as a sky bridge on the 6th floor.

- Fully equipped fitness facility, cafe and first-floor mail room.
- Security is staffed after-hours with on-site personnel 7 days per week. 16 cameras monitor all entrances and parking lots. After-hours access is available to tenants via Security PassKey card readers.
- On-site property management and maintenance team;
- Loading dock serving both towers.

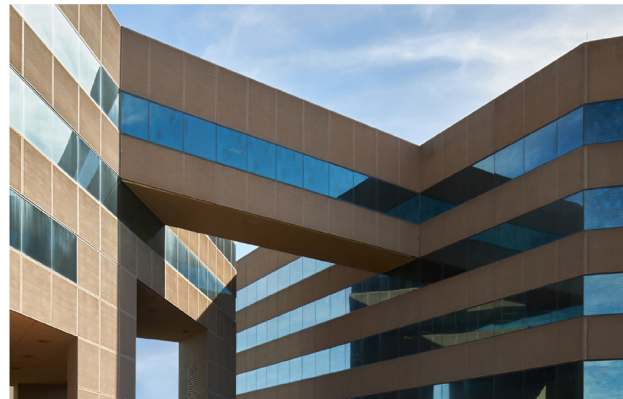
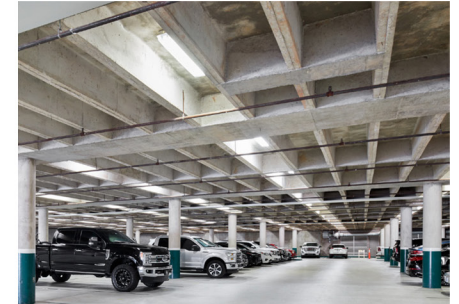
wiggprop.com

Nick Bentley 405.842.0100

Quail Springs Parkway Plaza

14000 Quail Springs Parkway, Oklahoma City OK 73134

WIGGIN
PROPERTIES, LLC



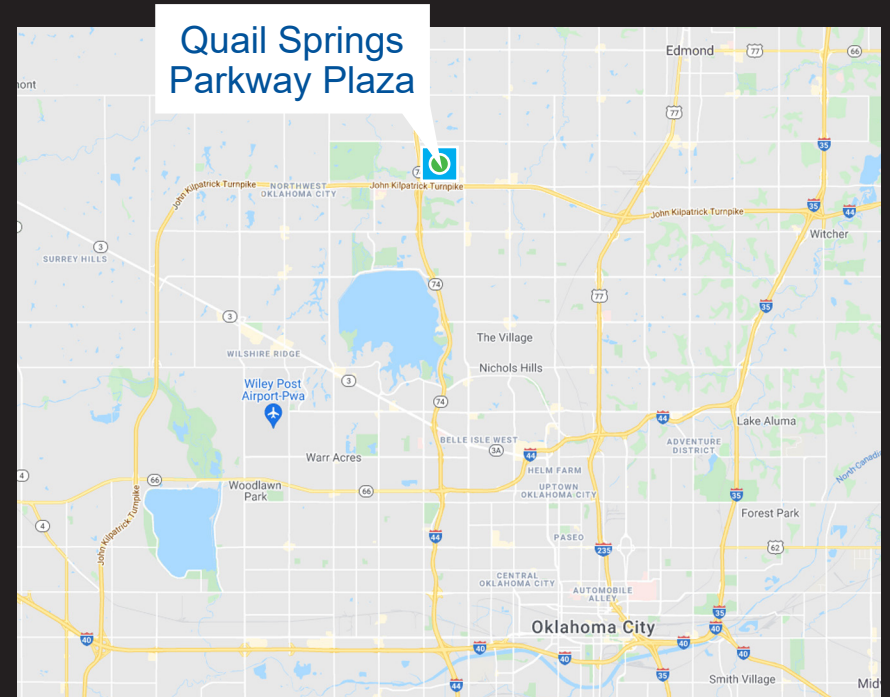
wigginprop.com

Nick Bentley 405.842.0100

This material is provided for information purposes only. It is from sources believed to be reliable. However, Wiggin Properties makes no warranties or representations, expressed or implied, as to the accuracy or sufficiency of the information. It is presented subject to errors, omissions, changes or withdrawal without notice. Square footage is provided by the local County Assessor or the Owner. Photos and graphics with copyrights by Costar, Google, Wiggin Properties and independent contractors are used with permission.

Quail Springs Parkway Plaza is located in the Memorial submarket of northwest Oklahoma City, next to the Kilpatrick Turnpike, between May Avenue and the Lake Hefner Parkway. Nearly fronting on Memorial Road (which runs parallel to the Kilpatrick Turnpike) the property lies within the Quail Springs Corporate Park, a 125 acre master-planned mixed-use commercial park which includes facilities for the FBI, AT&T, EOG Resources, Costco, AAA, Gulfport Energy and other high profile Class A office users.

Business hotels such as the Hilton Garden Inn, Marriott's Springhill Suites, Sheraton Four Points and a full-service Holiday Inn are within walking distance of the property. Dozens of restaurants ranging from fast casual to prime steakhouses are all within walking distance or a short drive from the Building.



WIGGIN
PROPERTIES, LLC
40 YEARS STRONG

Quail Springs Parkway Plaza

14000 Quail Springs Parkway

405.842.0100

A
CORE
Network Partner

