

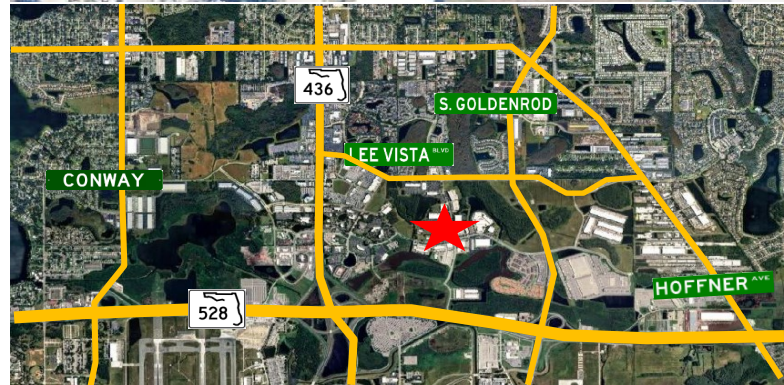


# For Sale

6420 Hazeltine National Dr,  
Orlando, FL 32822



<b>Building Size:</b>	49,900 ± SF
<b>Warehouse:</b>	41,351 ± SF
<b>Office/Showroom:</b>	8,549 ± SF
<b>Ceiling Height:</b>	21'-26'
<b>Doors:</b>	(6) Dock 9'x10' (1) Grade 12'x14'
<b>Land Area:</b>	3.79 Acres
<b>Zoning:</b>	I-P/AN
<b>Construction:</b>	Tilt Wall
<b>Year Built:</b>	2005
<b>2025 Property Taxes</b>	\$128,144.67
<b>Additional Features:</b>	New Roof 2023



McNulty Group, Inc. is the agent of the Landlord or Seller of this property and will be paid by the Landlord or Seller. All information furnished with respect to the subject property has been obtained from sources deemed reliable. No representation as to accuracy thereof is made. This offering is subject to errors, omissions, prior sales or withdrawal without notice.

**Chuck McNulty**  
Broker  
Chuck@mcnultygroupinc.com  
(407) 668-5537 Direct

**McNulty Group Inc.**  
2315 Lynx Lane, Suite 6  
Orlando, Florida 32804  
407-532-3441

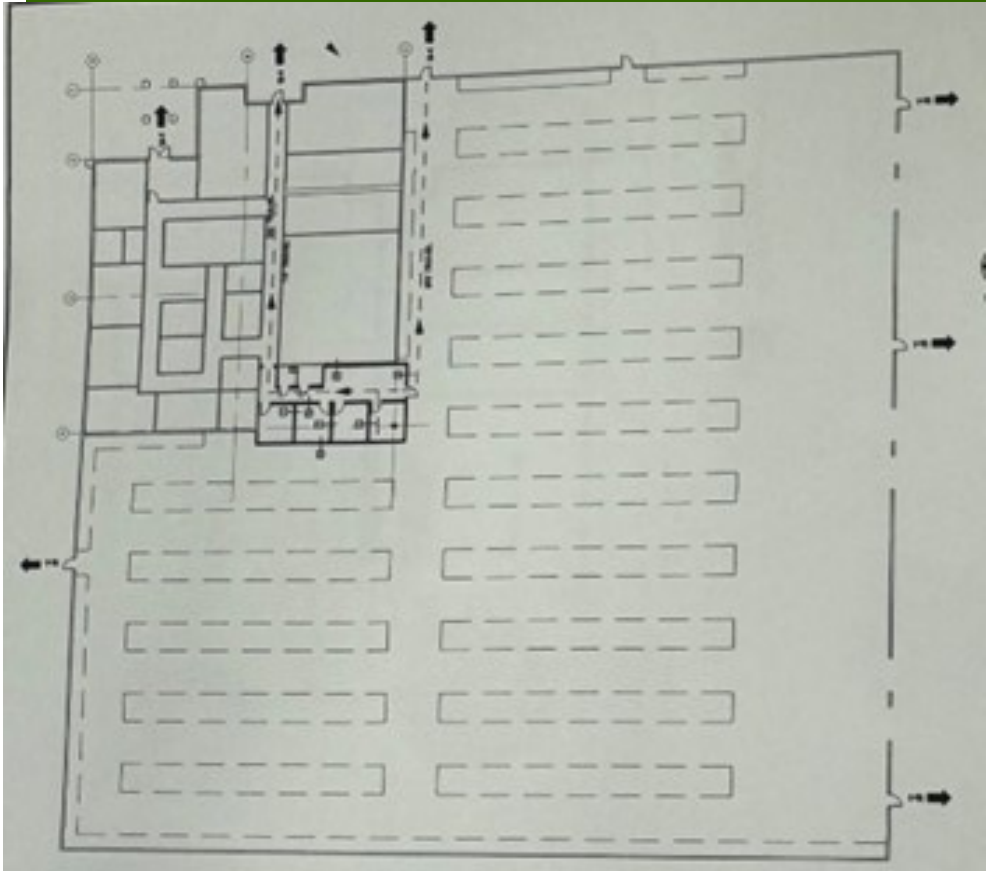


**McNulty Group**  
Incorporated

# FOR SALE

6420 Hazeltine National Dr,

Orlando, FL 32822



**Chuck McNulty**

Broker

[Chuck@mcnultygroupinc.com](mailto:Chuck@mcnultygroupinc.com)

(407) 668-5537 Direct

[mcnultygroupinc.com](http://mcnultygroupinc.com)

**McNulty Group Inc.**

2315 Lynx Lane, Suite 6

Orlando, Florida 32804

407-532-3441