

1250 Zane Avenue

1250 Zane Ave. N., Golden Valley

Office Warehouse Available For Sale



Highlights

- Excellent location with easy access to Highways 55 & 100
- 10 minutes from downtown Minneapolis
- 2 Loading docks | 1 Drive in
- 400 Amp, 120/240V, 3-Phase Delta service
- Roof: Replaced in 2020 (EPDM)
- Sprinkled: yes
- 26 Parking stalls

PID # 33.18.21.22.0004
1.29 Acres

- Available Space
 - 2,800 SF office
 - 6,612 SF warehouse
(Including shared space)
 - 400 SF office, 1,330 SF warehouse
- Great user/investor building with rental income in place for 2 years
- Local Motion lease expires August of 2028

Tour Today!

Building Features



Building Size:
3,991 SF office
18,709 SF Warehouse
22,700 SF total



Sale Price:
\$3,350,000
\$147.58 psf



Year Built:
1967



2026 Est. Tax:
\$75,203
\$3.31psf



Clear Height:
14'

Leasing Info

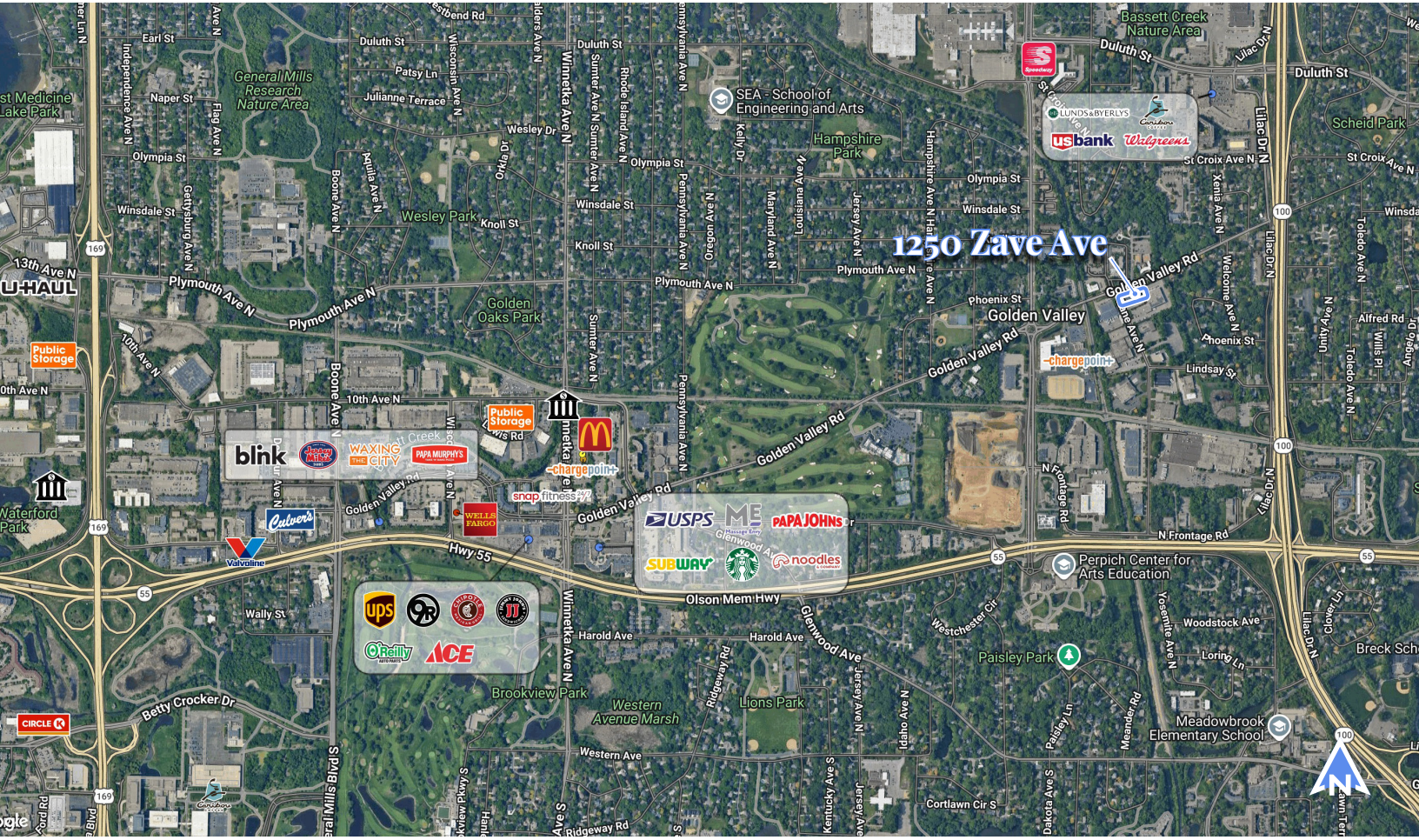
Bruce Hoberman
(763) 285-7251
bhoberman@hjdevelopment.com

hjdevelopment.com

HJ hj development

1250 Zane Ave.

1250 Zane Avenue, Golden Valley, MN

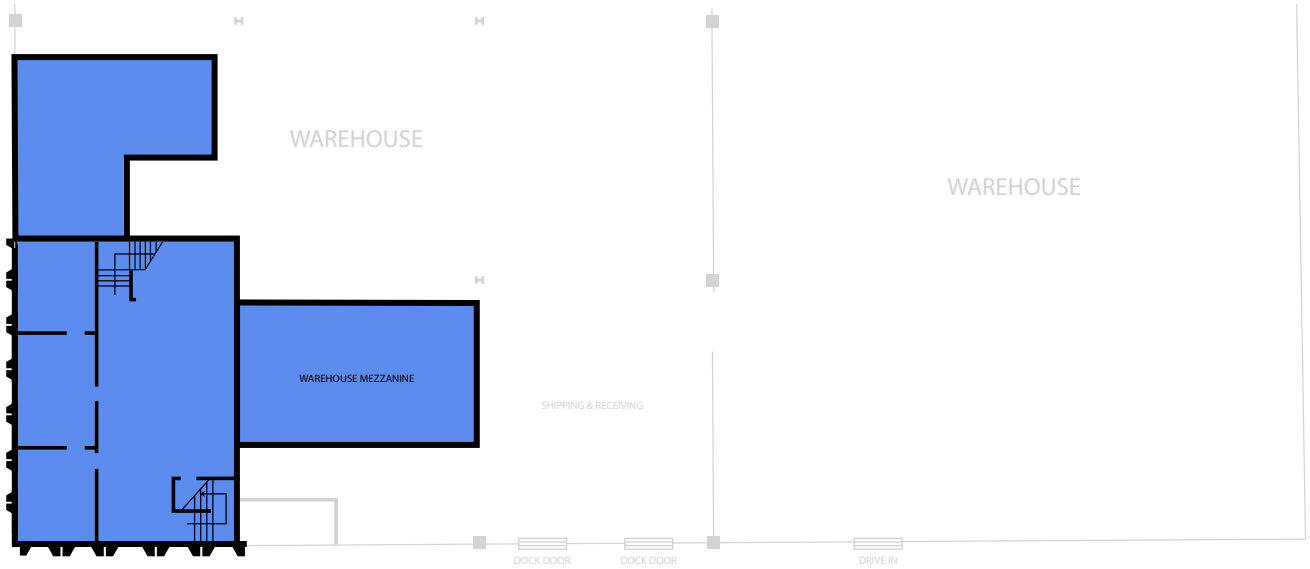


2655 Cheshire Lane North • Plymouth • MN • 55447 • hjdevelopment.com

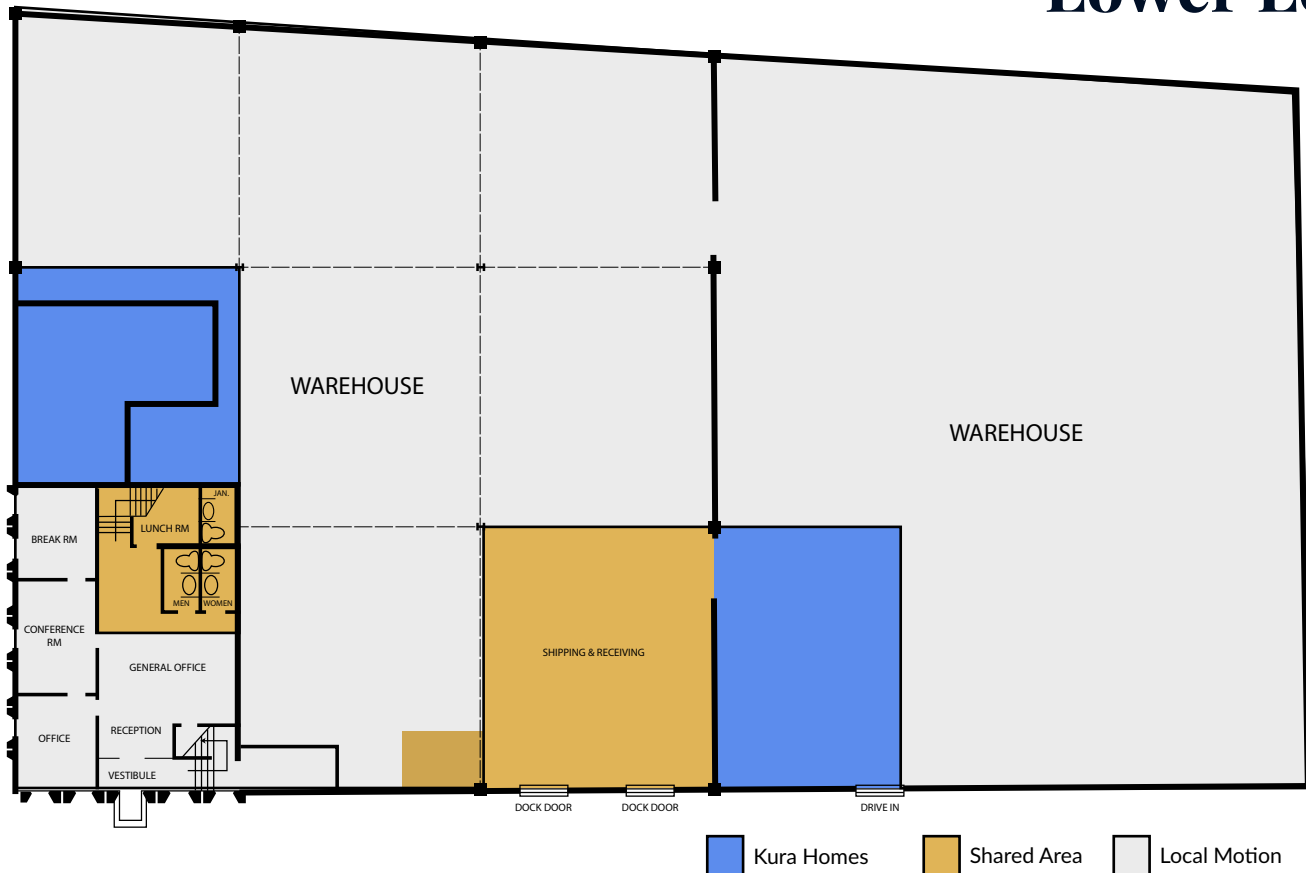


22,700 Total SF | 3,991 SF Office | 18,709 SF Warehouse | Loading - 2 Dock | 1 Drive In

Upper Level



Lower Level



Office



Upper Office



Upper Office



Lower Office



Employee Lunchroom

Warehouse

