

6401 NW OAK AVE | LAWTON, OK

Oaklawn Apartments



25 Units | 0.81 AC | YOC 1979

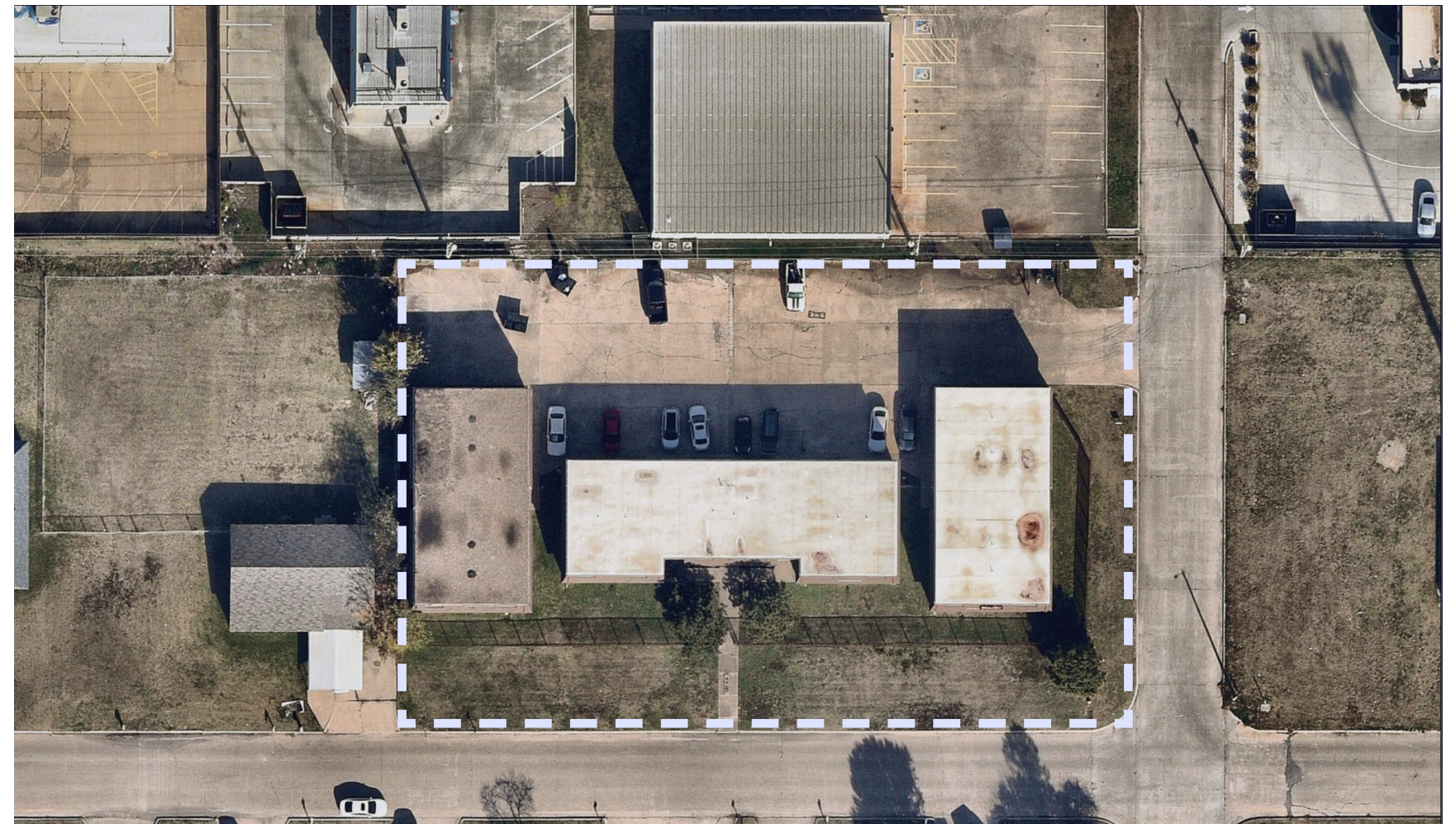
Property Details

Name	Address	City, State	# of Units	Acreage	Occupancy	Year Built	Rentable SF
Oaklawn Apartments	6401 NW Oak Ave	Lawton, OK	25	0.81 AC	84%	1979	23,900 SF

RENTAL RATES & UNIT MIX SUMMARY

Unit Type	# of Units	SF/Unit	Total SF	Market Rent/Unit	Rent/SF
1 BR / 1 BA	24	950	22,800	\$595	\$0.63
2 BR / 1 BA	1	1,100	1,100	\$700	\$0.64
TOTALS/AVERAGES	25	956	23,900	\$599	\$0.63

PARCEL VIEW



Colliers

16354 Muirfield Place, Suite A
Oklahoma City, OK 73013

8801 S. Yale Avenue, Suite 215
Tulsa, OK, 74137

MULTIFAMILY CAPITAL MARKETS EXPERTS

Jason Turner

Senior Associate
+1 918 671 7272
jason.turner@colliers.com

Chris Kennedy

Associate
+1 405 253 6654
chris.kennedy@colliers.com

Mike Marrara

Senior Vice President
+1 918 230 3875
mike.marrara@colliers.com

Ryan Gorman

Senior Vice President
+1 918 704 4829
ryan.gorman@colliers.com

David Dirkschneider

Executive Vice President
+1 405 514 0340
davidd@colliers.com

FULFILLMENT TEAM

Ryan Chapman, ccim

Senior Financial Analyst
+1 405 816 0256
ryan.chapman@colliers.com

Shana Avison

Senior Client Services Coordinator
+ 1 918 378 1962
shana.avison@colliers.com



This document/email has been prepared by Colliers for advertising and general information only. Colliers makes no guarantees, representations or warranties of any kind, expressed or implied, regarding the information including, but not limited to, warranties of content, accuracy and reliability. Any interested party should undertake their own inquiries as to the accuracy of the information. Colliers excludes unequivocally all inferred or implied terms, conditions and warranties arising out of this document and excludes all liability for loss and damages arising there from. This publication is the copyrighted property of Colliers and /or its licensor(s). © 2025. All rights reserved. This communication is not intended to cause or induce breach of an existing listing agreement. Colliers Oklahoma, LLC