

1855 | DORNOCH COURT



OTAY MESA | CALIFORNIA



24,091 SF WAREHOUSE / DISTRIBUTION SPACE FOR LEASE

PROJECT SUMMARY

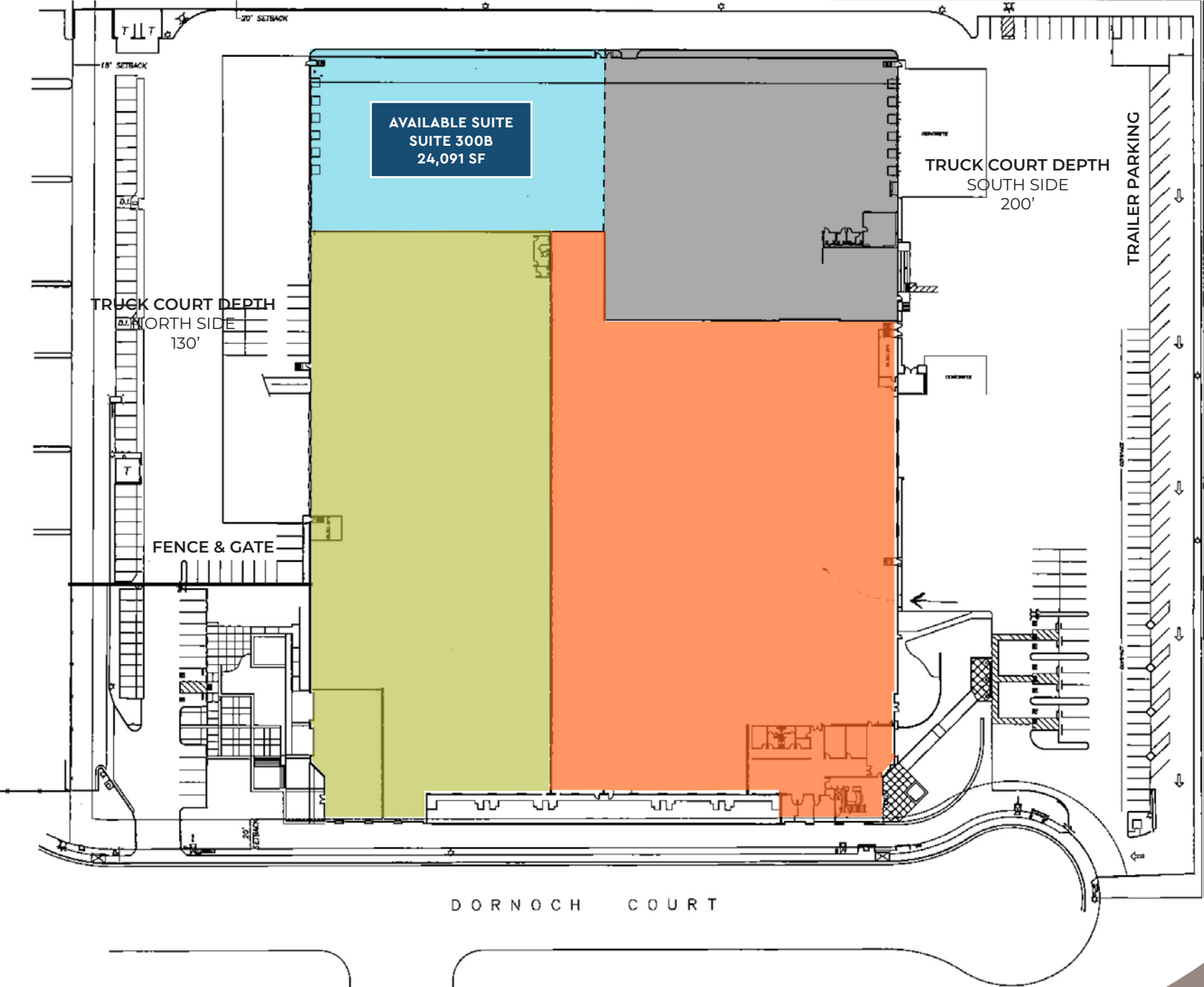
1855 DORNOCH COURT, SAN DIEGO, CA 92154 | OTAY MESA

TOTAL SQ FT	210,156 SF
BUILDING	Industrial Distribution Building
YEAR BUILT	1988 (major renovations in 2020)
SITE AREA	10.59 Acres (461,300 SF)
COLUMN SPACING	60' x 40'
TRAILER PARKING	Trailer Parking Available

CONSTRUCTION	Reinforced concrete
CLEAR HEIGHTS	26' -28'
LOADING	Dock high and grade level
SPRINKLERS	ESFR installed in 2016
ELECTRICAL	200-4,000 amps / 277/480v
PARKING RATIO	1.28 per 1,000 SF



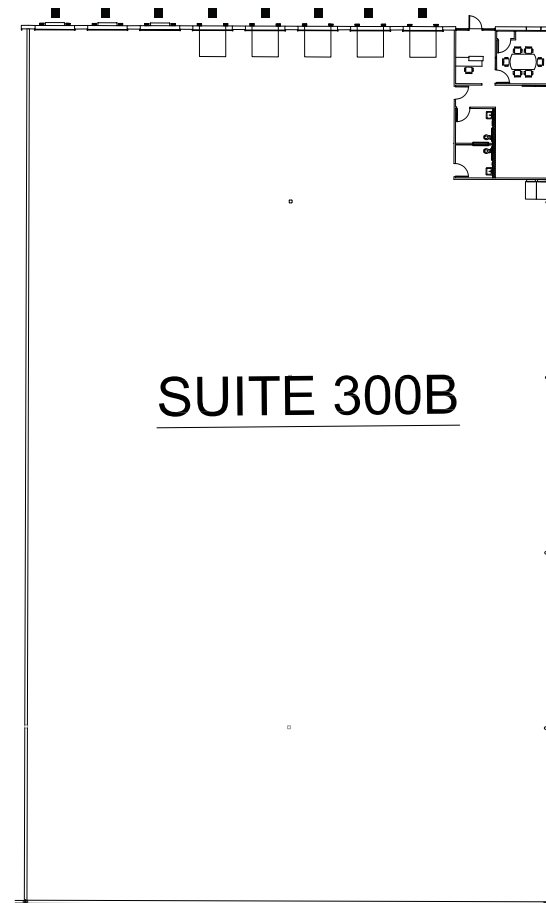
SITE PLAN



AVAILABLE SUITE

1855 DORNOCH COURT SUITE 300B

TOTAL SQ FT	24,091 SF
BUILDOUT	Small office area, 2 restrooms
LOADING	8 Dock high loading doors
COLUMN SPACING	60' x 40'
AVAILABILITY	Available now
RENTAL RATE	Contact broker
NNN	±\$0.32



- = Dock High Loading
- = Grade Level Loading

CORPORATE NEIGHBORS



D

1855
DORNOCH COURT





1855 | DORNOCH COURT



OTAY MESA | CALIFORNIA

BRANT ABERG, SIOR

858.546.5464
brant.aberg@cushwake.com
CA Lic. 01773573



12830 El Camino Real, Suite 100
San Diego, CA 92130
858.452.6500 | 858.630.6320
cushmanwakefield.com

©Cushman & Wakefield. All rights reserved. This information has been obtained from sources believed to be reliable but has not been verified. NO WARRANTY OR REPRESENTATION, EXPRESS OR IMPLIED, IS MADE AS TO THE CONDITION OF THE PROPERTY (OR PROPERTIES) REFERENCED HEREIN OR AS TO THE ACCURACY OR COMPLETENESS OF THE INFORMATION CONTAINED HEREIN, AND SAME IS SUBMITTED SUBJECT TO ERRORS, OMISSIONS, CHANGE OF PRICE, RENTAL OR OTHER CONDITIONS, WITHDRAWAL WITHOUT NOTICE, AND TO ANY SPECIAL LISTING CONDITIONS IMPOSED BY THE PROPERTY OWNER(S).