



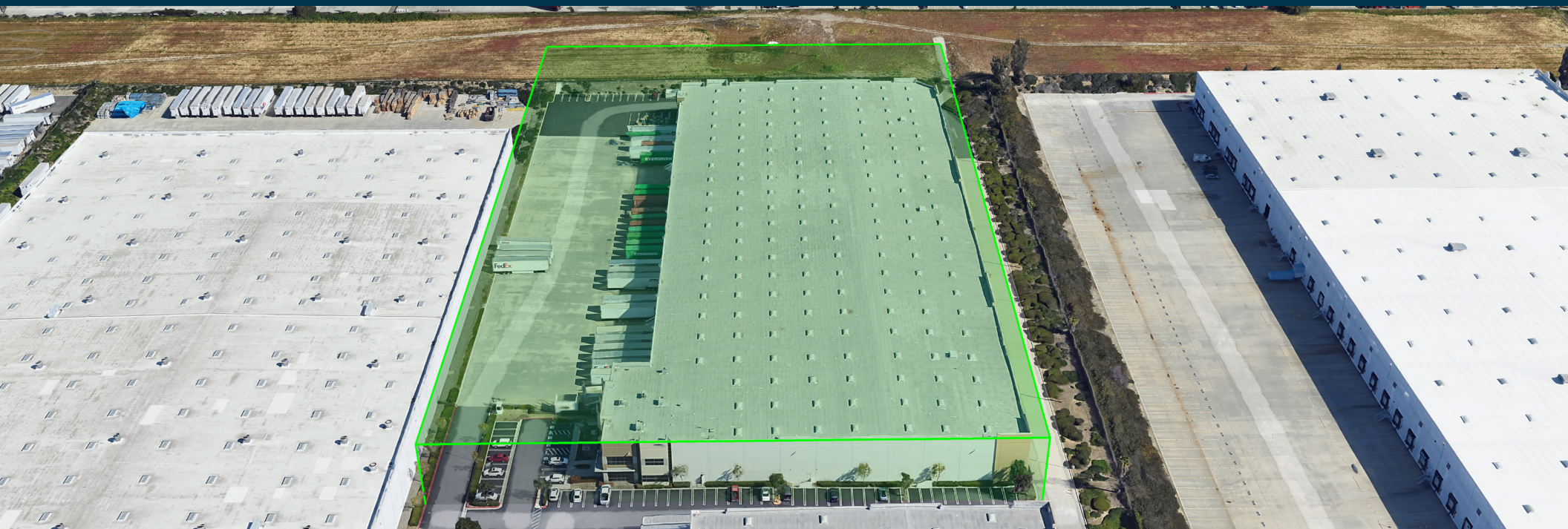
199,363 SF AVAILABLE Q2 2026 FOR LEASE

13512 MARLAY AVENUE | FONTANA, CA 92337

AVAILABLE NOW | WAREHOUSE DISTRIBUTION FACILITY |

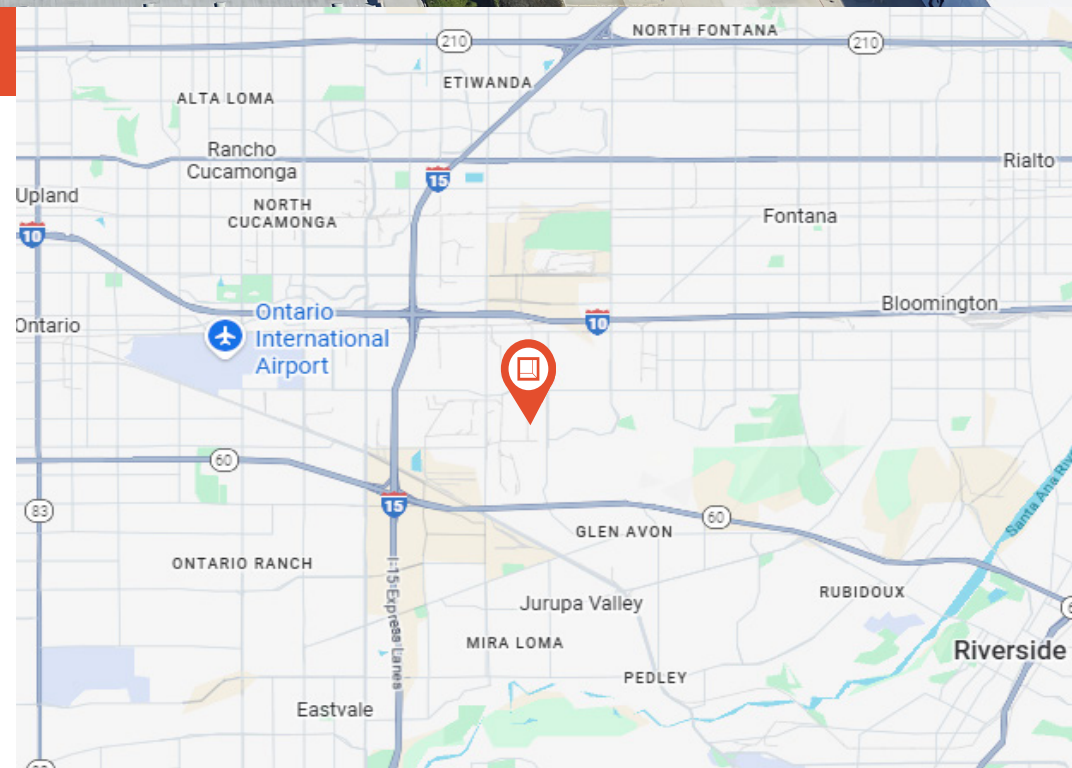
# FOR LEASE

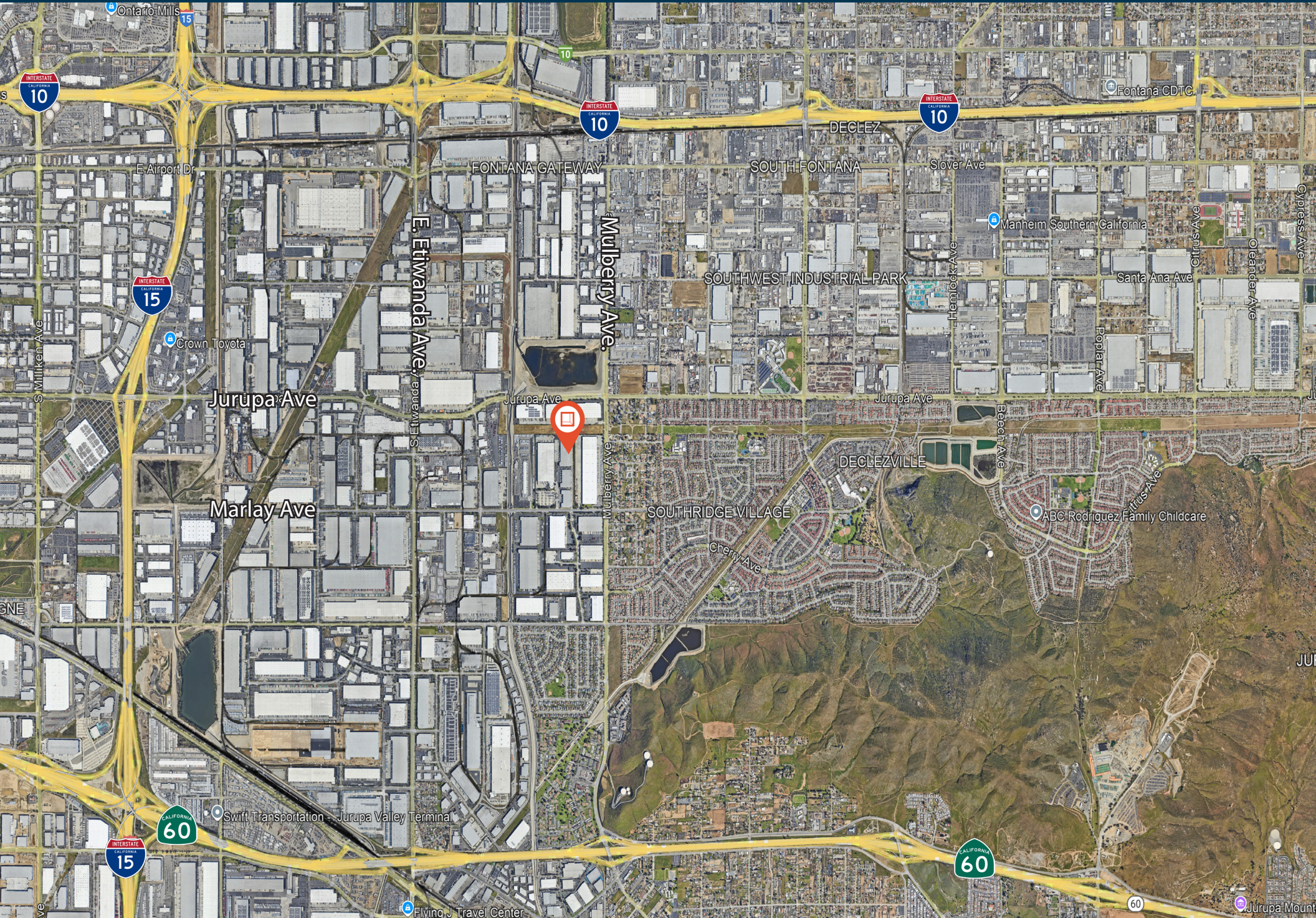
# 13512 MARLAY AVE.



## PROPERTY HIGHLIGHTS

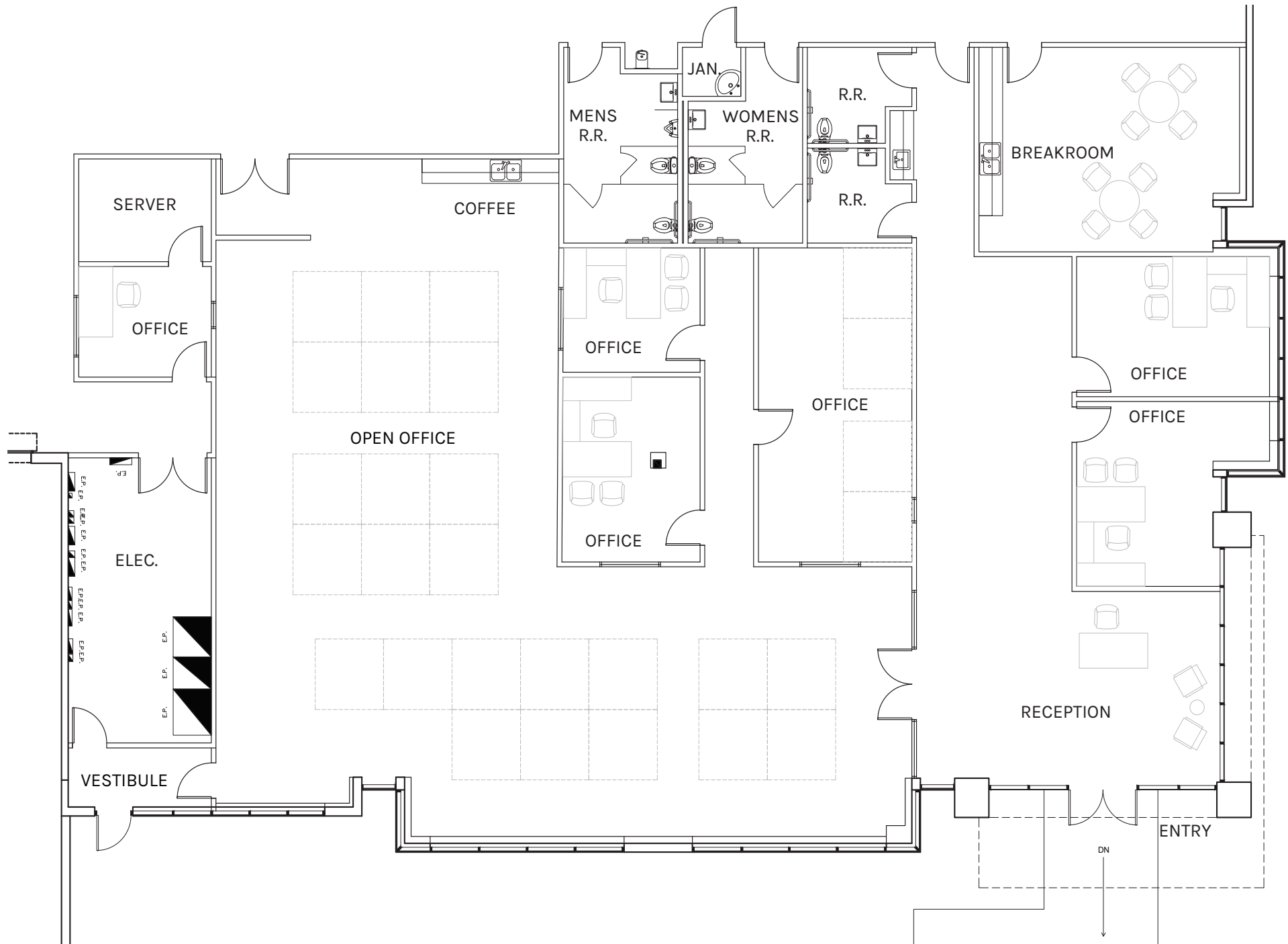
- ±193,647 Industrial Warehouse Space
- ±5,716 SF Office Space
- 5 Private Offices
- 30' Clear Height
- 34 Dock High Doors (22-Pit Levelers | 10-Edge Levelers)
- 2 Ground Level Doors (12' x 14')
- LED Lighting
- 800 Amps - Upgradeable to 3,000 Amps
- ESFR Sprinkler System (K-25)
- Foil Insulation
- Break Room, Office Bathrooms & Warehouse Bathrooms
- Fully Secured and Paved Yard with Security Guard Checkpoint
- Zoning: Southwest Industrial Park SP (Tenant to verify)
- Close Proximity to I-10, I-15, CA-60 Fwys, and Ontario International Airport





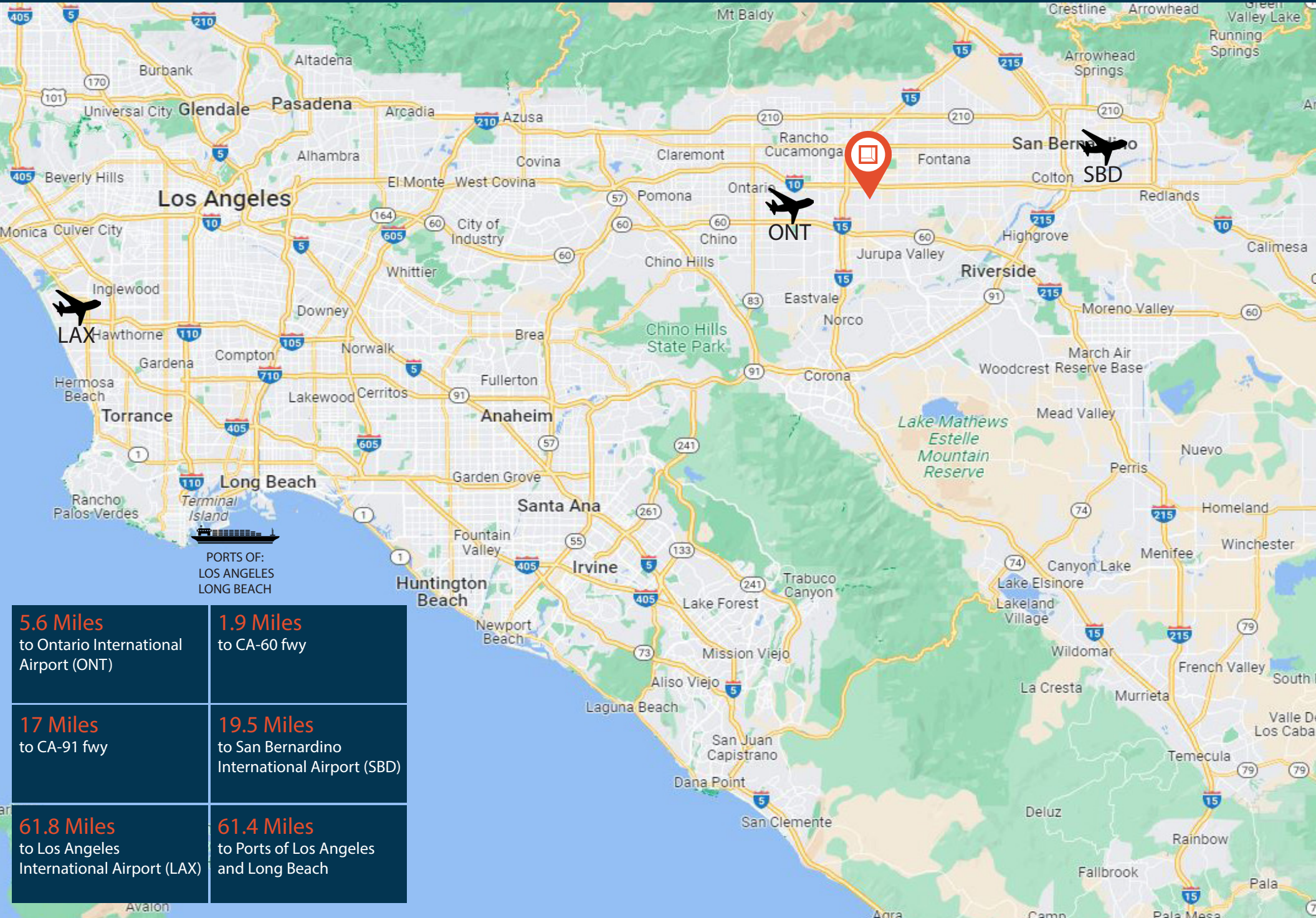






# LOCATION

13512 MARLAY AVE.



PORTS OF:  
LOS ANGELES  
LONG BEACH

**5.6 Miles**  
to Ontario International  
Airport (ONT)

**1.9 Miles**  
to CA-60 fwy

**17 Miles**  
to CA-91 fwy

**19.5 Miles**  
to San Bernardino  
International Airport (SBD)

**61.8 Miles**  
to Los Angeles  
International Airport (LAX)

**61.4 Miles**  
to Ports of Los Angeles  
and Long Beach



**Rexford  
Industrial**

## LEASING CONTACTS

### MICHAEL GIULIANO

Principal-Senior Vice President  
951.314.2195  
mgiuliano@lee-assoc.com  
LIC # 01211757

### MARLENE MESILLAS

Associate  
909.373.2704  
mmesillas@lee-assoc.com  
LIC # 02202524

### FERNANDO ESCOBEDO

Associate  
909.373.2709  
fescobedo@lee-assoc.com  
LIC # 02213624



COMMERCIAL REAL ESTATE SERVICES

Lee & Associates - Ontario  
3535 Inland Empire Blvd  
Ontario, CA 91764

909.989.7771  
<https://www.lee-associates.com/>

All information furnished regarding property for sale, rental or financing is from sources deemed reliable, but no warranty or representation is made to the accuracy thereof and same is submitted to errors, omissions, change of price, rental or other conditions prior to sale, lease or financing or withdrawal without notice. No liability of any kind is to be imposed on the broker herein.