



Auto Plaza

\$725,000

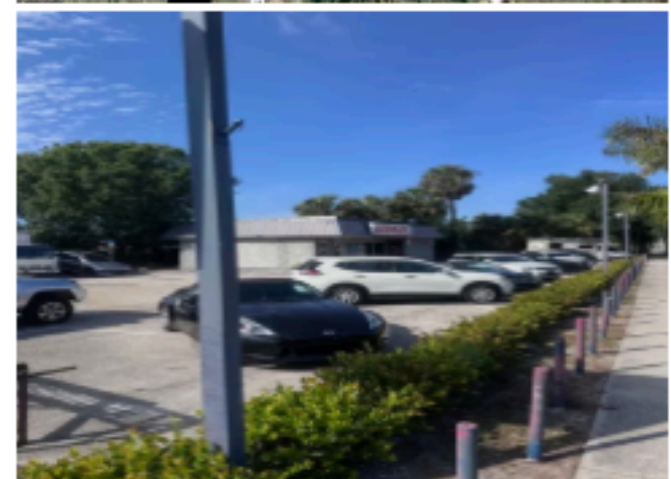
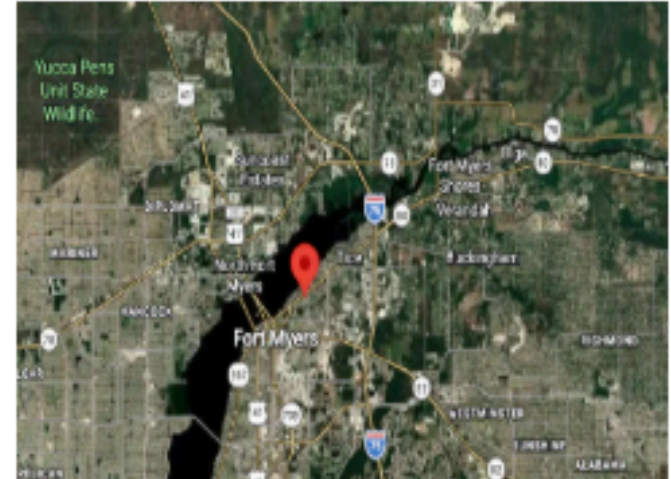
196 FEET OF FRONTAGE FACING PALM BEACH BLVD NOW BEING USED AS A CAR SALES LOCATION WITH BLACK TOP PARKING AND AN OFFICE BUILDING.

\$750,000 + 516 ft ~ \$1,450 / front foot. EXTREMELY LOW PRICE. Massive exposure (rare on that corridor) Perfect for auto / display-heavy use, Fully usable paved lot
CI zoning (allows heavier commercial)...

This commercial parcel is ideally positioned along highly trafficked Palm Beach Boulevard in Fort Myers, offering exceptional visibility and accessibility. The property features a rare 196 feet of frontage, providing outstanding exposure to steady daily traffic flow—making it well-suited for a variety of retail or automotive-related uses.

Currently operating as an automobile sales plaza, the site is fully improved with a blacktopped parking area that...

- 196 FEET OF FRONTAGE ON PALM BEACH BLVD
- COMMERCIAL INTENSIVE ZONING
- HIGH TRAFFIC VOLUME



Price:	\$725,000
Property Type:	Land
Property Subtype:	Commercial
Proposed Use:	Commercial
Sale Type:	Investment or Owner User
Total Lot Size:	0.22 AC
No. Lots:	1
Zoning Description:	CI
APN / Parcel ID:	07-44-25-P3-00125.0100