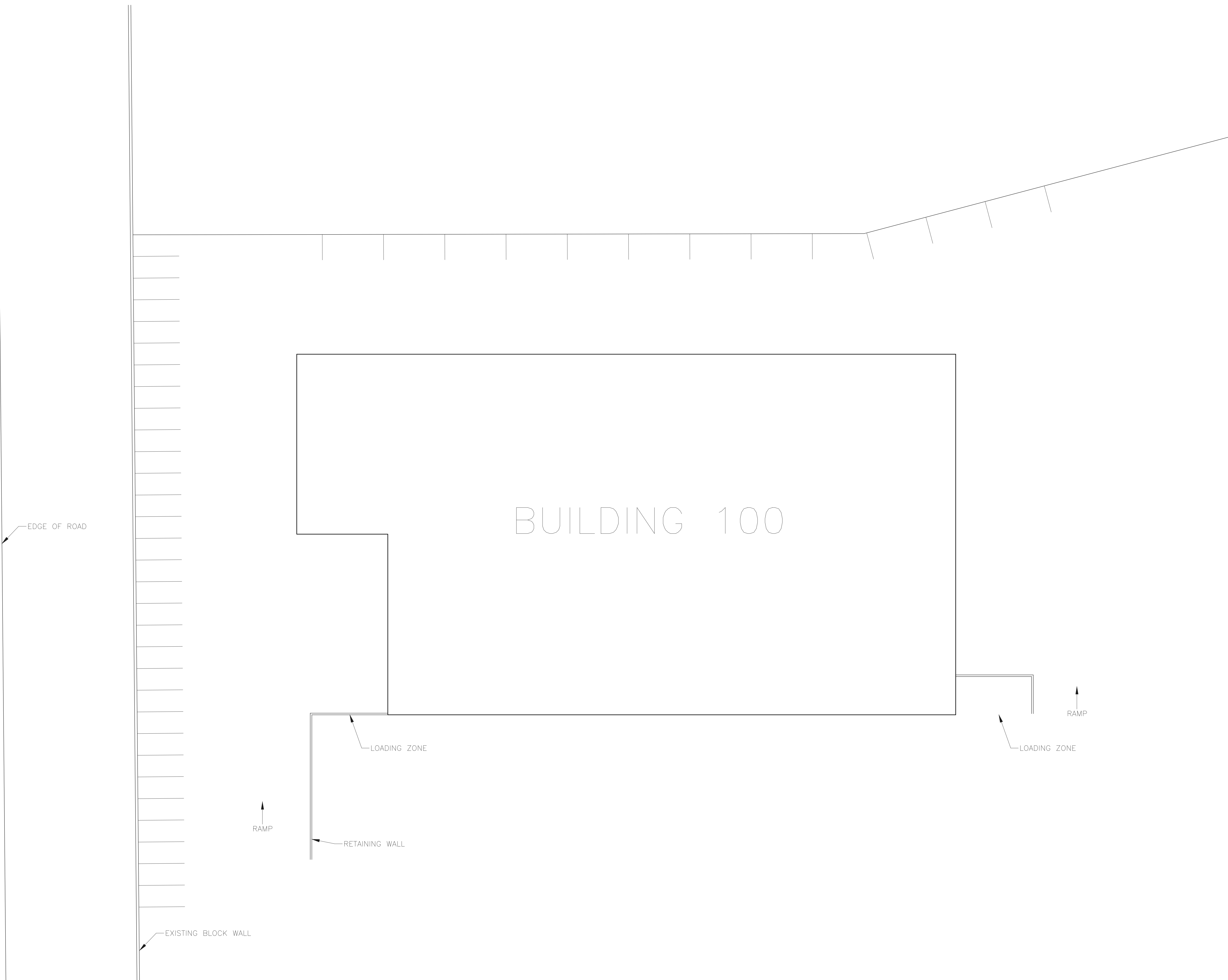


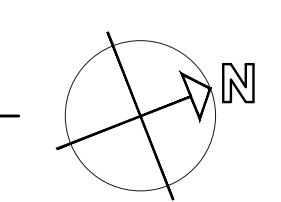
\\users\seith.BNL\TECH\Documents\Projects\BNL_Tech_Projects\Wilson\1015 WK Bldg 100\DWG\23STE001.dwg - Jun 07 2023 - 06:54pm - sat

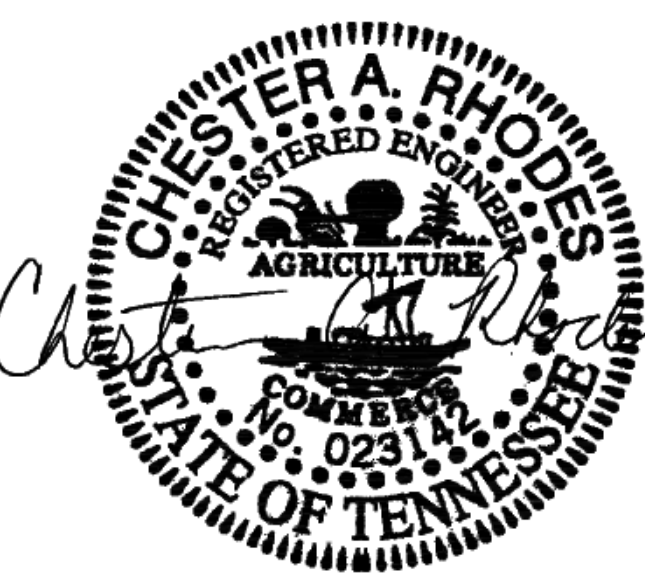



FLAG NOTES

1 TBD

100 BUILDING SITE
SCALE: 1/8" = 1'-0"




 6/23/2023
 ENGINEER:

RHODES ENGINEERING AND ENVIRONMENTAL SERVICES, LLC
 PHONE: 615.480.7635
 EMAIL: rhodesengineering@gmail.com
 807 NASHVILLE HWY. SOUTH, SUITE #1
 COLUMBIA, TN 38401
 CIVIL, ENVIRONMENTAL
 SITE DEVELOPMENT, WATER/WASTEWATER

NO.	REVISIONS	DATE	DRAWN	CHKD	DESIGN	APPD

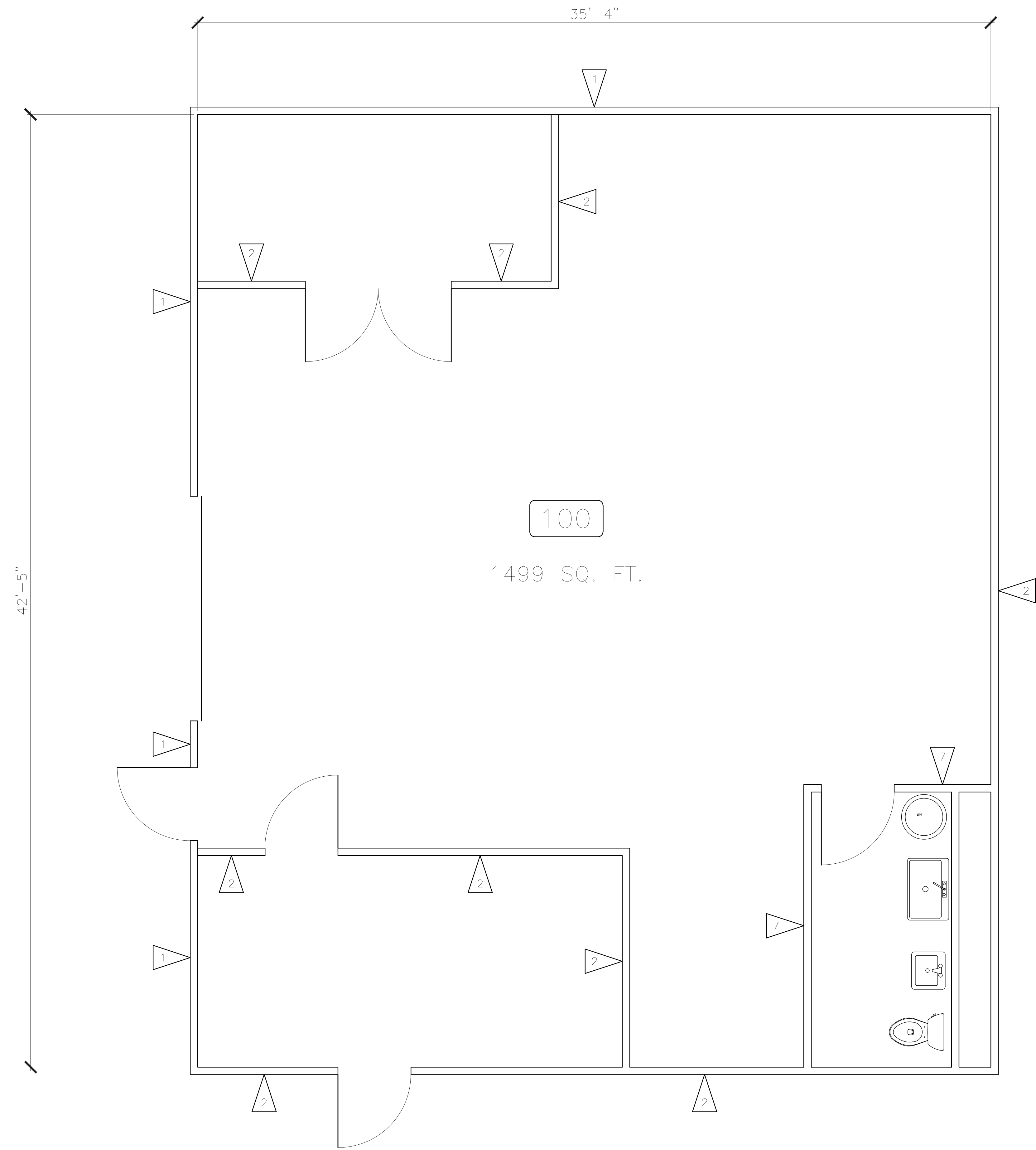
APPROVAL	
DRAWN	
DESIGN	
CHECKED	
APPROVED	

1015 WEST KIRKLAND AVENUE
NASHVILLE, TN
100 BUILDING SITE

DWG. No.	C001
SCALE:	NOTED
CADFILE:	23STE001
JOB No.	23-STE-001
REV.	

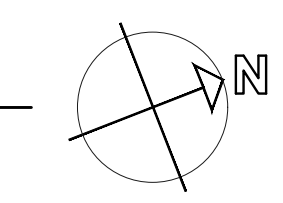


Users\eth.BNL\TECH\Documents\Projects\BNL_Tech_Projects\Wilson\1015 WK Bldg 100\DWG\23STE001.dwg - Jun 07 2023 - 05:59pm - sat



100
1499 SQ. FT.

FLOOR PLAN - RM 100
SCALE: 3/8" = 1'-0"



FLAG NOTES

- 1 8" CMU WITH STUCCO, SEE DETAIL A1/A500
- 2 8" BLOCK, SEE DETAIL A2/A500
- 3 12" CONCRETE, SEE DETAIL A3/A500
- 4 8" CMU WITH CONCRETE, SEE DETAIL A4/A500
- 5 6.5" CONCRETE, SEE DETAIL A5/A500
- 6 STEEL STUD WALL WITH METAL SIDING, SEE DETAIL A6/A500
- 7 STEEL STUD WALL WITH 5/8" DRYWALL, SEE DETAIL A7/A500



NO.	REVISIONS	DATE	BY	CHKD	DESIGN	APPD

APPROVAL	
DRAWN	
DESIGN	
CHECKED	
APPROVED	

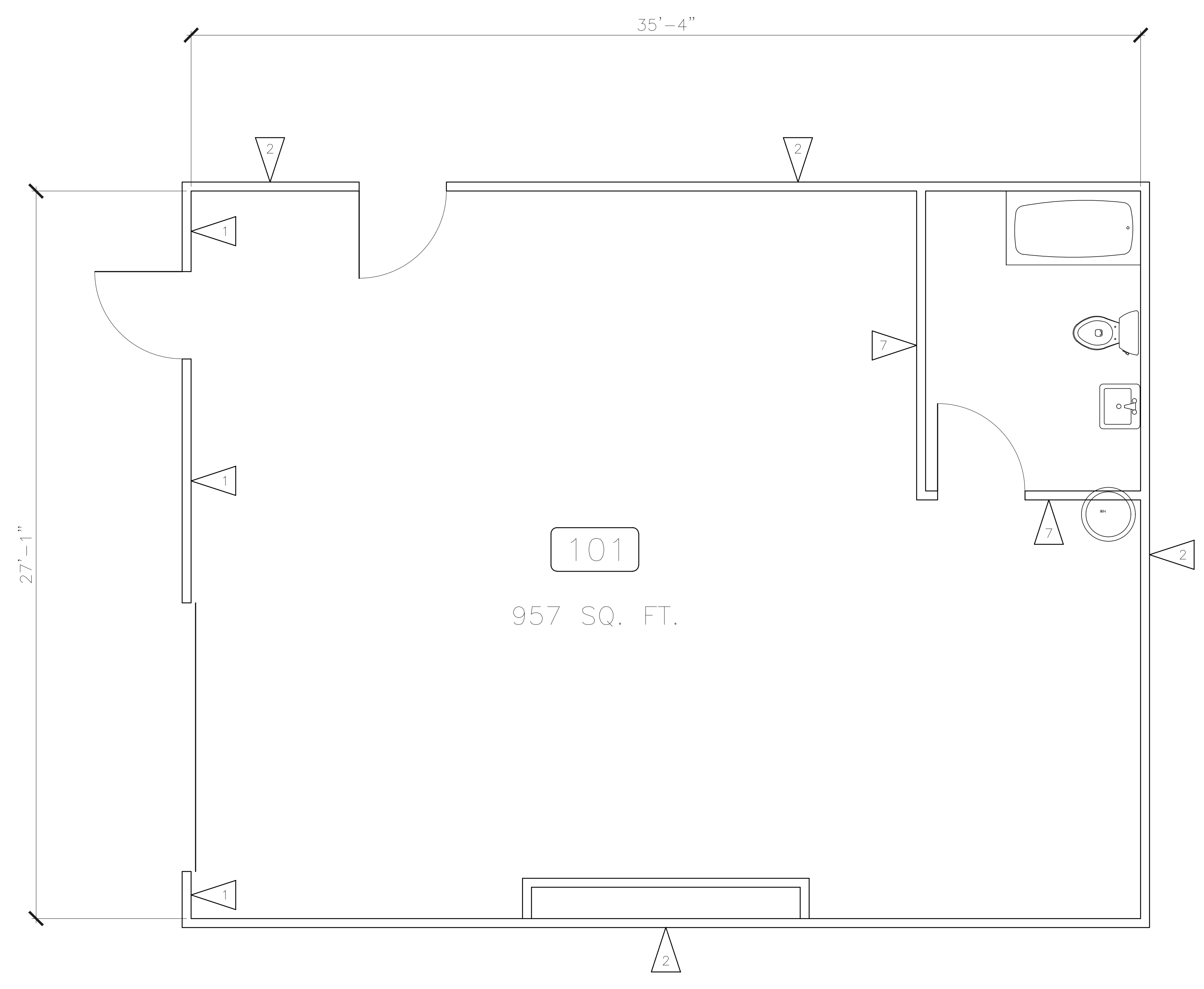


6/23/2023

ENGINEER:
RE
RHODES ENGINEERING
AND ENVIRONMENTAL
SERVICES, LLC
PHONE: 615.480.7535
EMAIL: rhodesengineering@gmail.com
807 NASHVILLE HWY. SOUTH, SUITE #1
COLUMBIA, TN 38401
CIVIL ENVIRONMENTAL
SITE DEVELOPMENT WATER/WASTEWATER

1015 WEST KIRKLAND AVENUE
NASHVILLE, TN
FLOOR PLAN - RM 100

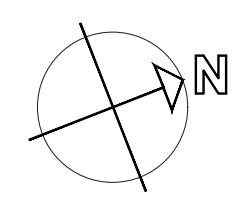
DWG. No.	A100
SCALE:	NOTED
CADFILE:	23STE001
JOB No.	20-STE-003
REV.	



FLAG NOTES

- 1 8" CMU WITH STUCCO, SEE DETAIL A1/A500
- 2 8" BLOCK, SEE DETAIL A2/A500
- 3 12" CONCRETE, SEE DETAIL A3/A500
- 4 8" CMU WITH CONCRETE, SEE DETAIL A4/A500
- 5 6.5" CONCRETE, SEE DETAIL A5/A500
- 6 STEEL STUD WALL WITH METAL SIDING, SEE DETAIL A6/A500
- 7 STEEL STUD WALL WITH 5/8" DRYWALL, SEE DETAIL A7/A500

FLOOR PLAN - RM 101
SCALE: 3/8" = 1'-0"



Chester Rhodes

6/23/2023

ENGINEER:

RE

RHODES ENGINEERING AND ENVIRONMENTAL SERVICES, LLC
PHONE: 615.480.7535
EMAIL: rhodesengineering@gmail.com
807 NASHVILLE HWY. SOUTH, SUITE #1
COLUMBIA, TN 38401
CIVIL ENVIRONMENTAL
SITE DEVELOPMENT WATERWASTEWATER

NO.	REVISIONS	DATE	BY	CHKD	DESIGN	APPD

APPROVAL	
DRAWN	
DESIGN	
CHECKED	
APPROVED	

1015 WEST KIRKLAND AVENUE
NASHVILLE, TN

FLOOR PLAN - RM 101

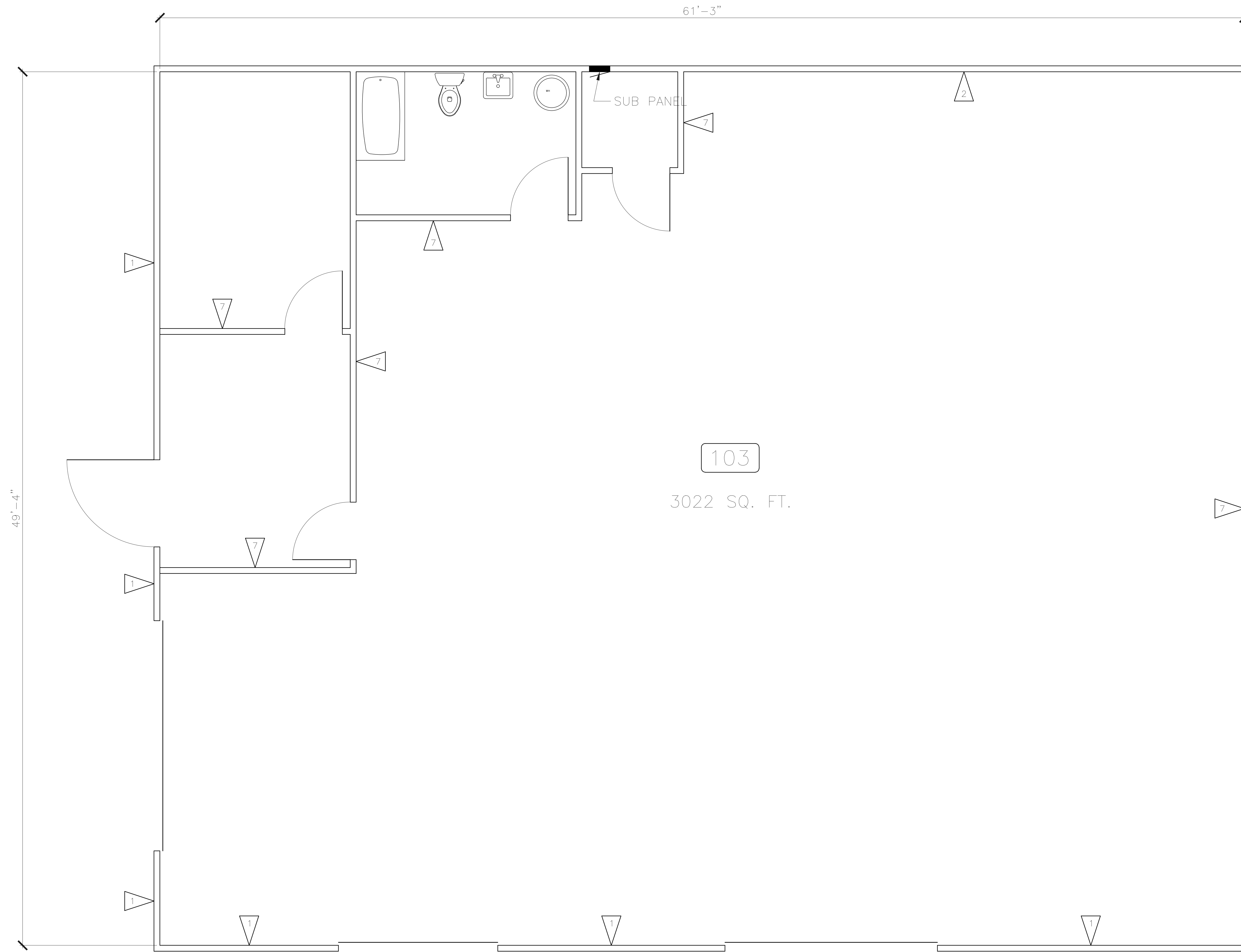
DWG. No. **A101**

SCALE: NOTED
CADFILE: 23STE001

JOB No. 20-STE-003
REV.



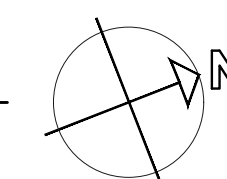
Users\seith.BNL\TECH\Documents\Projects\BLL Tech Projects\Wilson\1015 WK Bldg 100\DWG\23STE001.dwg - Jun 07 2023 - 05:17pm - sat

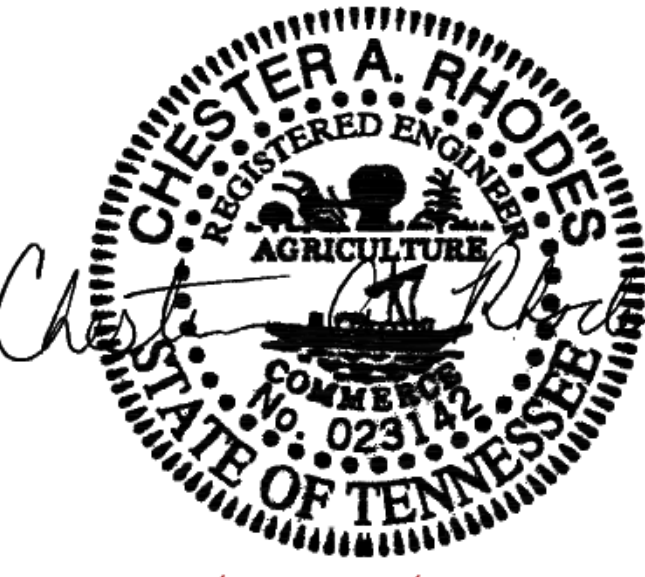



FLAG NOTES

- 1 8" CMU WITH STUCCO, SEE DETAIL A1/A500
- 2 8" BLOCK, SEE DETAIL A2/A500
- 3 12" CONCRETE, SEE DETAIL A3/A500
- 4 8" CMU WITH CONCRETE, SEE DETAIL A4/A500
- 5 6.5" CONCRETE, SEE DETAIL A5/A500
- 6 STEEL STUD WALL WITH METAL SIDING, SEE DETAIL A6/A500
- 7 STEEL STUD WALL WITH 5/8" DRYWALL, SEE DETAIL A7/A500

FLOOR PLAN - RM 103
SCALE: 3/8" = 1'-0"




Chester A. Rhodes
 6/23/2023
 ENGINEER: 
RHODES ENGINEERING AND ENVIRONMENTAL SERVICES, LLC
 PHONE: 615.480.7535
 EMAIL: rhodesengineering@gmail.com
 807 NASHVILLE HWY. SOUTH, SUITE #1
 COLUMBIA, TN 38401
 CIVIL ENVIRONMENTAL
 SITE DEVELOPMENT WATER/WASTEWATER



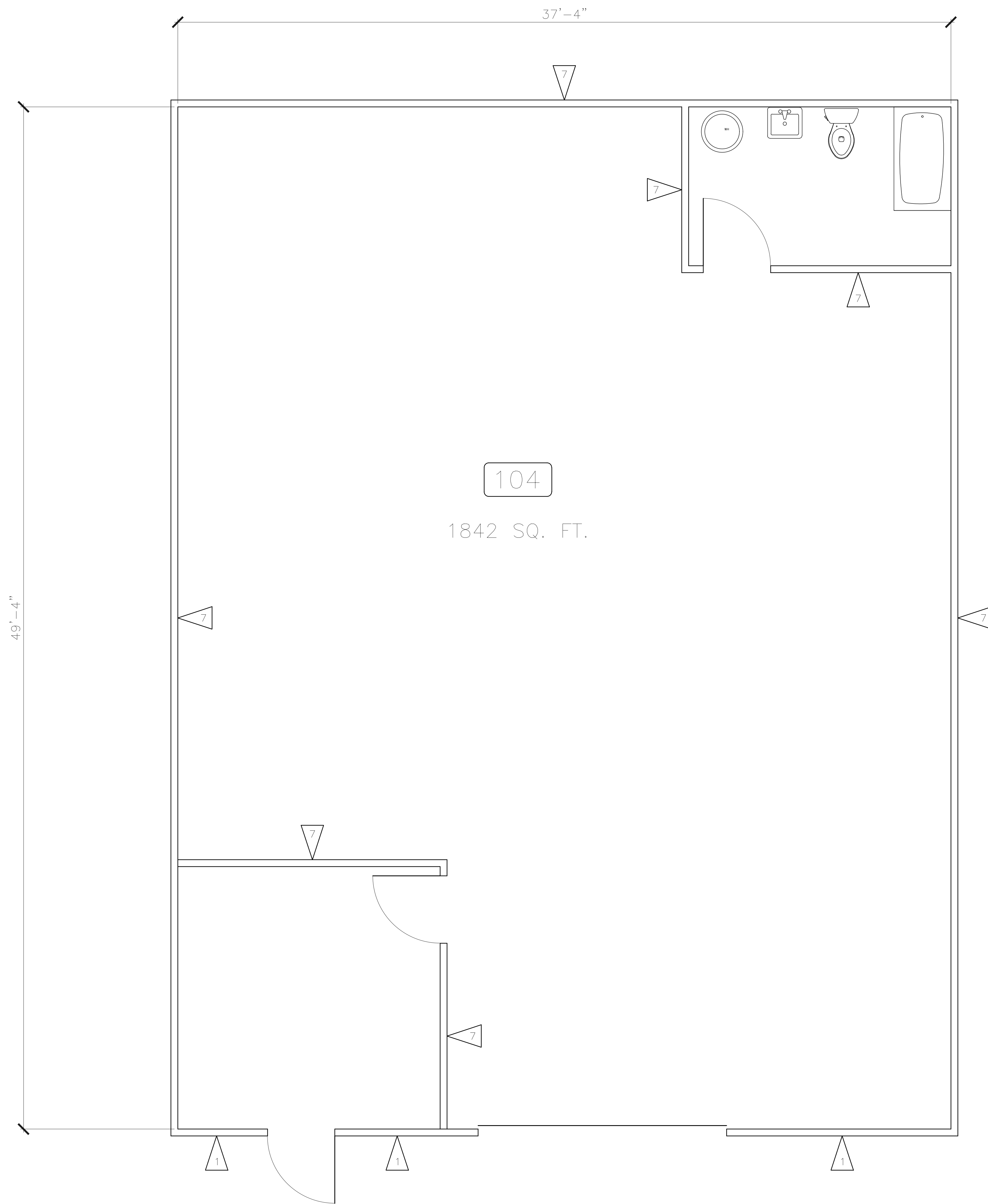
NO.	REVISIONS	DATE	BY	CHKD	DESIGN	APPD

APPROVAL	
DRAWN	
DESIGN	
CHECKED	
APPROVED	

1015 WEST KIRKLAND AVENUE
NASHVILLE, TN
FLOOR PLAN - RM 103

DWG. No.	A103
SCALE:	NOTED
CADFILE:	23STE001
JOB No.	20-STE-003
REV.	

Users\seith.BNL\TECH\Documents\Projects\BNL_Tech_Projects\Wilson\1015 WK Bldg 100\DWG\23STE001.dwg - Jun 07 2023 - 05:57pm - sat

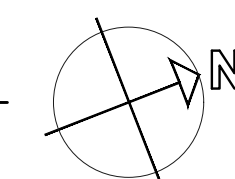


FLAG NOTES

- 1 8" CMU WITH STUCCO, SEE DETAIL A1/A500
- 2 8" BLOCK, SEE DETAIL A2/A500
- 3 12" CONCRETE, SEE DETAIL A3/A500
- 4 8" CMU WITH CONCRETE, SEE DETAIL A4/A500
- 5 6.5" CONCRETE, SEE DETAIL A5/A500
- 6 STEEL STUD WALL WITH METAL SIDING, SEE DETAIL A6/A500
- 7 STEEL STUD WALL WITH 5/8" DRYWALL, SEE DETAIL A7/A500

FLOOR PLAN - RM 104

SCALE: 3/8" = 1'-0"



6/23/2023

ENGINEER:

RE

RHODES ENGINEERING AND ENVIRONMENTAL SERVICES, LLC

PHONE: 615.480.7535

EMAIL: rhodesengineering@gmail.com

807 NASHVILLE HWY. SOUTH, SUITE #1
COLUMBIA, TN 38401

CIVIL ENVIRONMENTAL
SITE DEVELOPMENT WATERWASTEWATER

NO.	REVISIONS	DATE	BY	CHKD	DESIGN	APPD

APPROVAL	
DRAWN	
DESIGN	
CHECKED	
APPROVED	

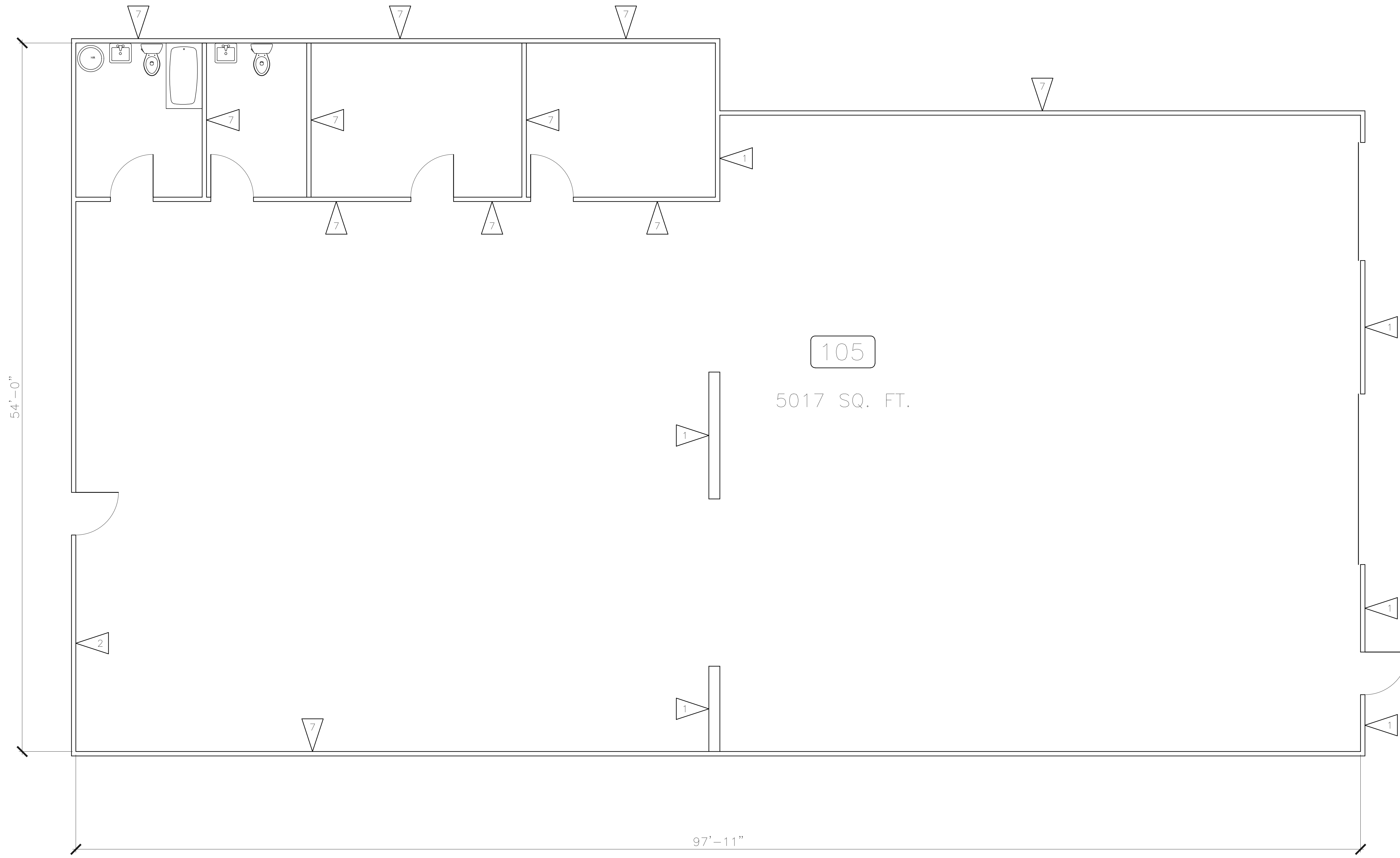
1015 WEST KIRKLAND AVENUE
NASHVILLE, TN

FLOOR PLAN - RM 104

DWG. No.	A104
SCALE:	NOTED
CADFILE:	23STE001
JOB No.	20-STE-003
REV.	



Users\eth.BNL\TECH\Documents\Projects\BNL_Tech_Projects\Wilson\1015 WK Bldg 100\DWG\23STE001.dwg - Jun 07 2023 - 05:55pm - sat





FLAG NOTES

- 1 8" CMU WITH STUCCO, SEE DETAIL A1/A500
- 2 8" BLOCK, SEE DETAIL A2/A500
- 3 12" CONCRETE, SEE DETAIL A3/A500
- 4 8" CMU WITH CONCRETE, SEE DETAIL A4/A500
- 5 6.5" CONCRETE, SEE DETAIL A5/A500
- 6 STEEL STUD WALL WITH METAL SIDING, SEE DETAIL A6/A500
- 7 STEEL STUD WALL WITH 5/8" DRYWALL, SEE DETAIL A7/A500

FLOOR PLAN - RM 105
SCALE: 1/4" = 1'-0"




Chester A. Rhodes
 6/23/2023
 ENGINEER: 
RHODES ENGINEERING AND ENVIRONMENTAL SERVICES, LLC
 PHONE: 615.480.7535
 EMAIL: rhodesengineering@gmail.com
 807 NASHVILLE HWY., SOUTH, SUITE #1
 COLUMBIA, TN 38401
CIVIL ENVIRONMENTAL
SITE DEVELOPMENT WATER/WASTEWATER

NO.	REVISIONS	DATE	BY	CHKD	DESIGN	APPD

APPROVAL	
DRAWN	
DESIGN	
CHECKED	
APPROVED	

1015 WEST KIRKLAND AVENUE
NASHVILLE, TN
FLOOR PLAN - RM 105

DWG. No. **A105**

SCALE: NOTED

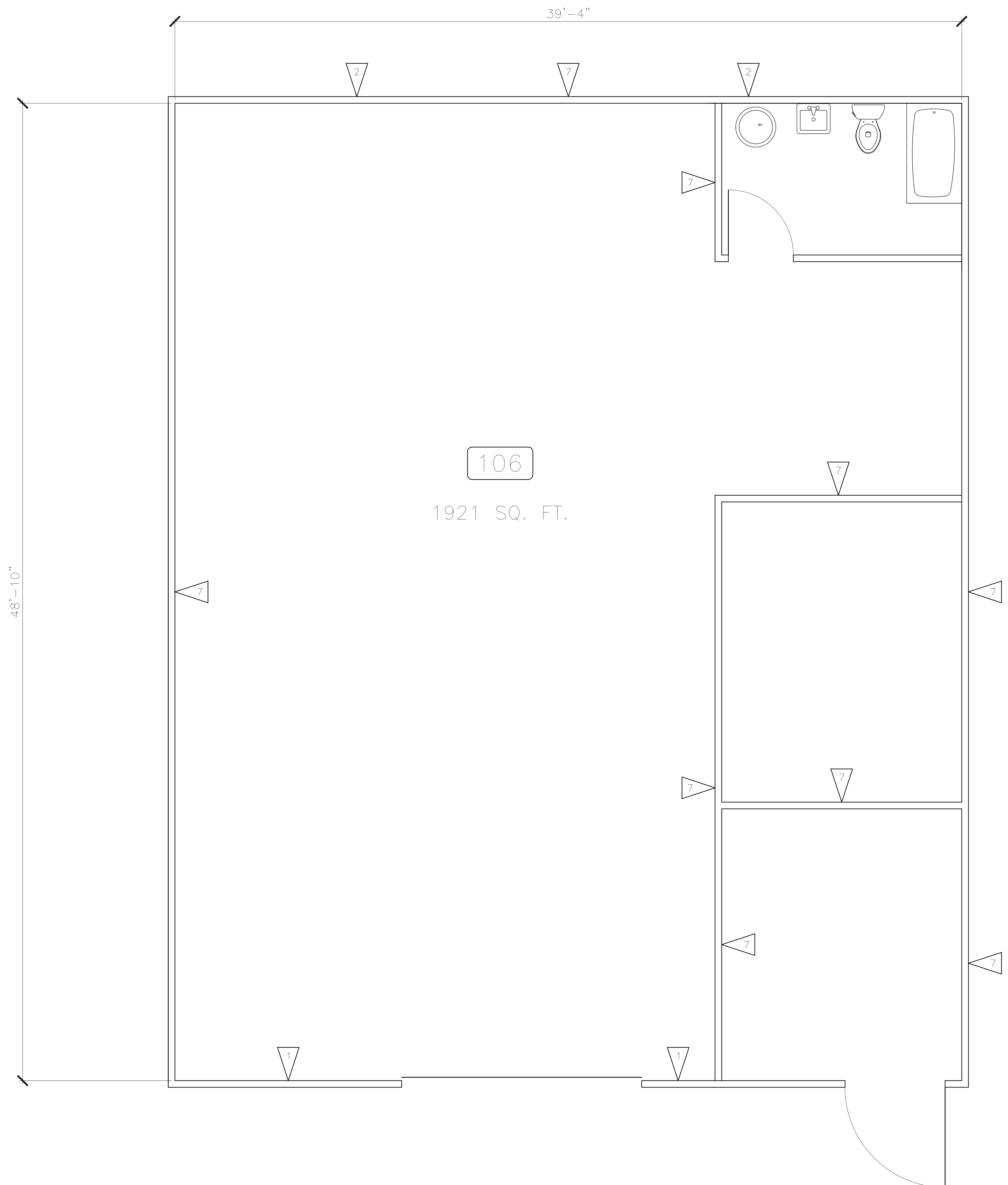
CADFILE: 23STE001

JOB No. 20-STE-003

REV. 



Users\seith.BNL\TECH\Documents\Projects\BNL_Tech_Projects\Wilson\1015 WK Bldg 100\DWG\23STE001.dwg - Jun 07 2023 - 05:59pm - sat

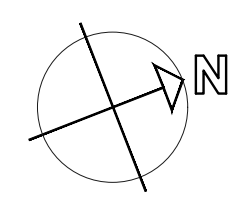


FLAG NOTES

- 1 8" CMU WITH STUCCO, SEE DETAIL A1/A500
- 2 8" BLOCK, SEE DETAIL A2/A500
- 3 12" CONCRETE, SEE DETAIL A3/A500
- 4 8" CMU WITH CONCRETE, SEE DETAIL A4/A500
- 5 6.5" CONCRETE, SEE DETAIL A5/A500
- 6 STEEL STUD WALL WITH METAL SIDING, SEE DETAIL A6/A500
- 7 STEEL STUD WALL WITH 5/8" DRYWALL, SEE DETAIL A7/A500

106
1921 SQ. FT.

FLOOR PLAN - RM 106
SCALE: 3/8" = 1'-0"



NO.	REVISIONS	DATE	BY	CHKD	DESIGN	APPD

APPROVAL	
DRAWN	
DESIGN	
CHECKED	
APPROVED	



ENGINEER:
RE
RHODES ENGINEERING
AND ENVIRONMENTAL
SERVICES, LLC
PHONE: 615.480.7535
EMAIL: rhodesengineering@gmail.com
807 NASHVILLE HWY. SOUTH, SUITE #1
COLUMBIA, TN 38401
CIVIL ENVIRONMENTAL
SITE DEVELOPMENT WATERWASTEWATER

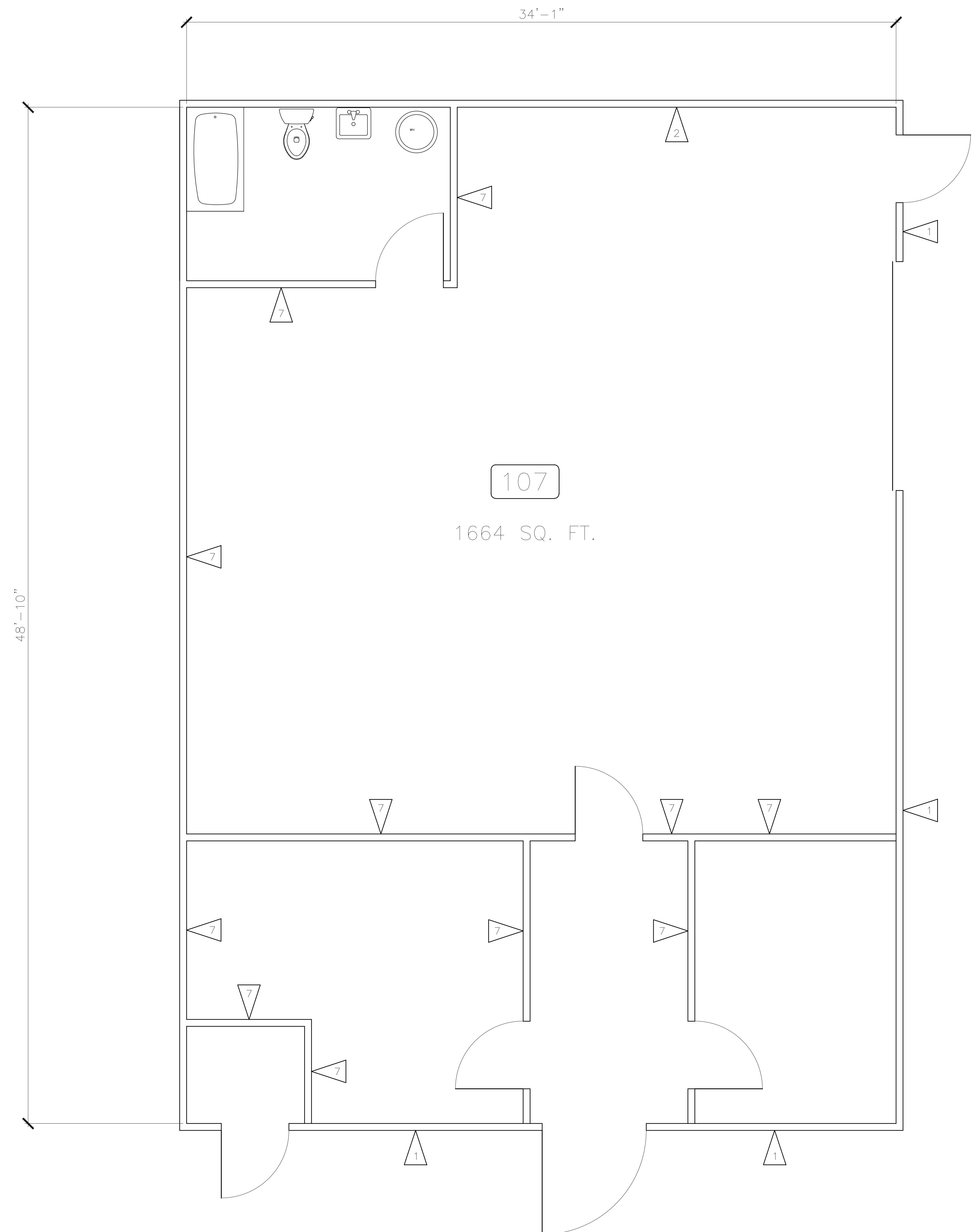
1015 WEST KIRKLAND AVENUE
NASHVILLE, TN
FLOOR PLAN - RM 106

DWG. No. **A106**

SCALE: NOTED
CADFILE: 23STE001

JOB No. 20-STE-003
REV.

Users\seith.BNL\TECH\Documents\Projects\BNL_Tech_Projects\Wilson\1015 WK Bldg 100\DWG\23STE001.dwg - Jun 07 2023 - 06:59pm - sat



FLAG NOTES

- 1 8" CMU WITH STUCCO, SEE DETAIL A1/A500
- 2 8" BLOCK, SEE DETAIL A2/A500
- 3 12" CONCRETE, SEE DETAIL A3/A500
- 4 8" CMU WITH CONCRETE, SEE DETAIL A4/A500
- 5 6.5" CONCRETE, SEE DETAIL A5/A500
- 6 STEEL STUD WALL WITH METAL SIDING, SEE DETAIL A6/A500
- 7 STEEL STUD WALL WITH 5/8" DRYWALL, SEE DETAIL A7/A500

FLOOR PLAN - RM 107
 SCALE: 3/8" = 1'-0"



ENGINEER:
RE
 RHODES ENGINEERING
 AND ENVIRONMENTAL
 SERVICES, LLC
 PHONE: 615.480.7535
 EMAIL: rhodesengineering@gmail.com
 807 NASHVILLE HWY. SOUTH, SUITE #1
 COLUMBIA, TN 38401
 CIVIL ENVIRONMENTAL
 SITE DEVELOPMENT WATERWASTEWATER

NO.	REVISIONS	DATE	BY	CHKD	DESIGN	APPD

APPROVAL	
DRAWN	
DESIGN	
CHECKED	
APPROVED	

1015 WEST KIRKLAND AVENUE
 NASHVILLE, TN
 FLOOR PLAN - RM 107

DWG. No. **A107**

SCALE: NOTED
 CADFILE: 23STE001

JOB No. 20-STE-003
 REV.



NO.	REVISIONS	DATE	BY	CHKD	DESIGN	APPD

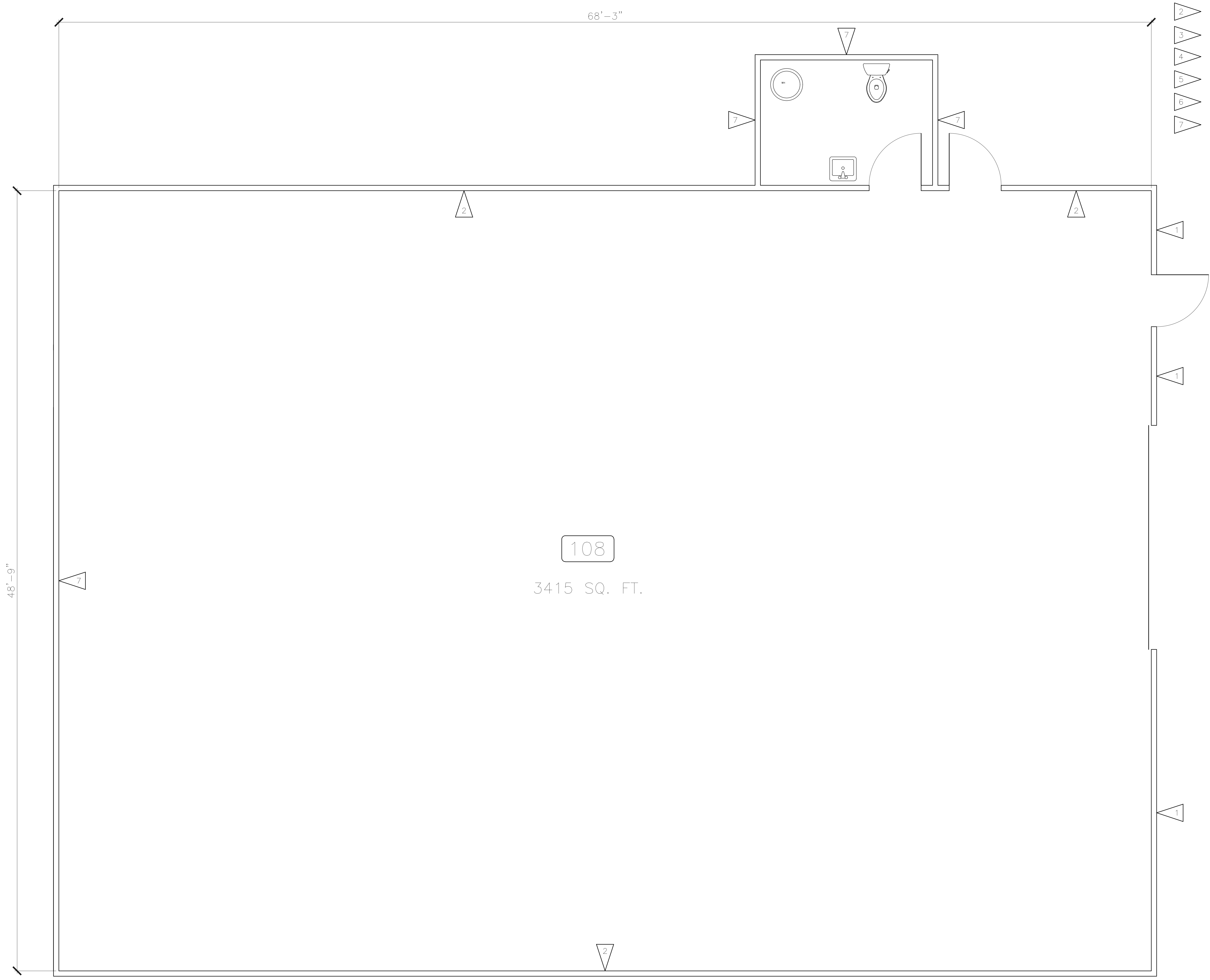
APPROVAL	
DRAWN	
DESIGN	
CHECKED	
APPROVED	

1015 WEST KIRKLAND AVENUE
NASHVILLE, TN
FLOOR PLAN - RM 108

DWG. No.	A108
SCALE:	NOTED
CADFILE:	23STE001
JOB No.	
REV.	
20-STE-003	

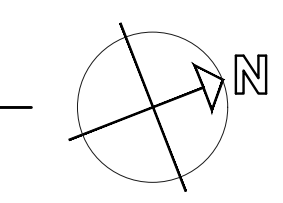
FLAG NOTES

- 1 8" CMU WITH STUCCO, SEE DETAIL A1/A500
- 2 8" BLOCK, SEE DETAIL A2/A500
- 3 12" CONCRETE, SEE DETAIL A3/A500
- 4 8" CMU WITH CONCRETE, SEE DETAIL A4/A500
- 5 6.5" CONCRETE, SEE DETAIL A5/A500
- 6 STEEL STUD WALL WITH METAL SIDING, SEE DETAIL A6/A500
- 7 STEEL STUD WALL WITH 5/8" DRYWALL, SEE DETAIL A7/A500



108
3415 SQ. FT.

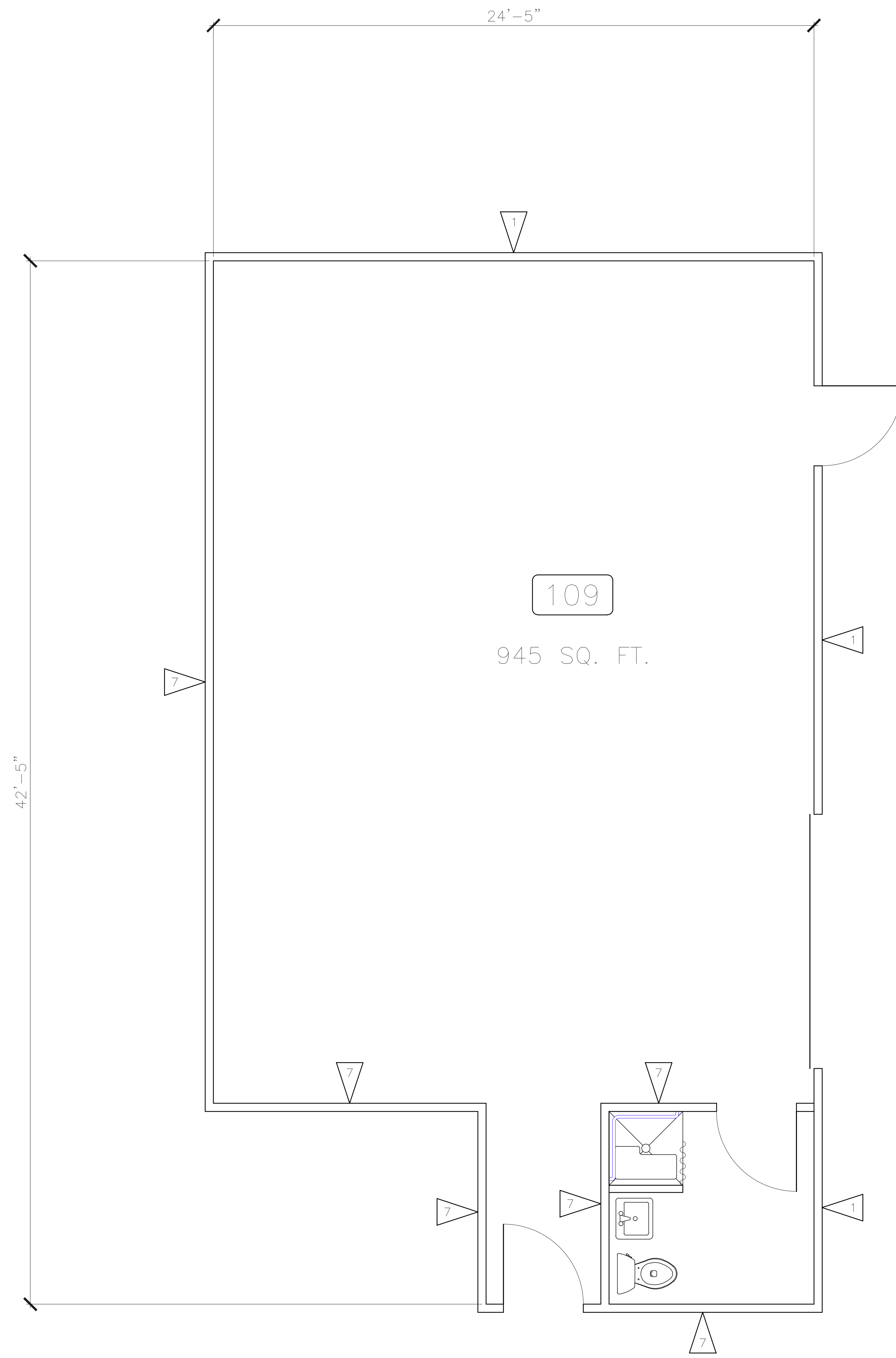
FLOOR PLAN - RM 108
SCALE: 3/8" = 1'-0"



6/23/2023

ENGINEER: **RE**
RHODES ENGINEERING AND ENVIRONMENTAL SERVICES, LLC
PHONE: 615.480.7535
EMAIL: rhodesengineering@gmail.com
807 NASHVILLE HWY. SOUTH, SUITE #1
COLUMBIA, TN 38401
CIVIL ENVIRONMENTAL
SITE DEVELOPMENT WATERWASTEWATER

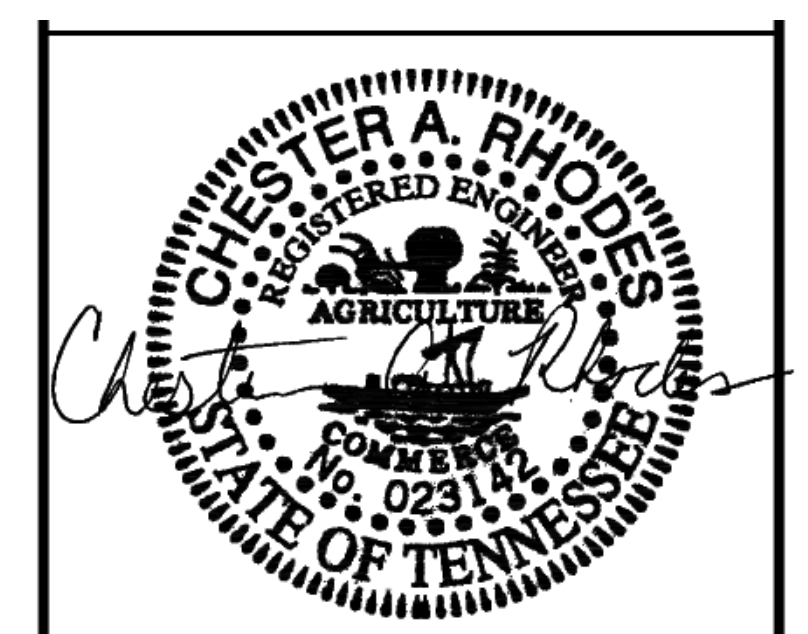
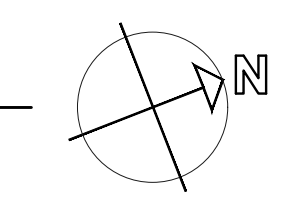
Users\seith.BNL\TECH\Documents\Projects\BNL_Tech_Projects\Wilson\1015 WK Bldg 100\DWG\23STE001.dwg - Jun 07 2023 - 06:25pm - sat



FLAG NOTES

- 1 8" CMU WITH STUCCO, SEE DETAIL A1/A500
- 2 8" BLOCK, SEE DETAIL A2/A500
- 3 12" CONCRETE, SEE DETAIL A3/A500
- 4 8" CMU WITH CONCRETE, SEE DETAIL A4/A500
- 5 6.5" CONCRETE, SEE DETAIL A5/A500
- 6 STEEL STUD WALL WITH METAL SIDING, SEE DETAIL A6/A500
- 7 STEEL STUD WALL WITH 5/8" DRYWALL, SEE DETAIL A7/A500

FLOOR PLAN - RM 109
SCALE: 3/8" = 1'-0"



6/23/2023

ENGINEER:

RE

RHODES ENGINEERING AND ENVIRONMENTAL SERVICES, LLC
PHONE: 615.480.7535
EMAIL: rhodesengineering@gmail.com
807 NASHVILLE HWY. SOUTH, SUITE #1
COLUMBIA, TN 38401
CIVIL ENVIRONMENTAL
SITE DEVELOPMENT WATERWASTEWATER

NO.	REVISIONS	DATE	BY	CHKD	DESIGN	APPD

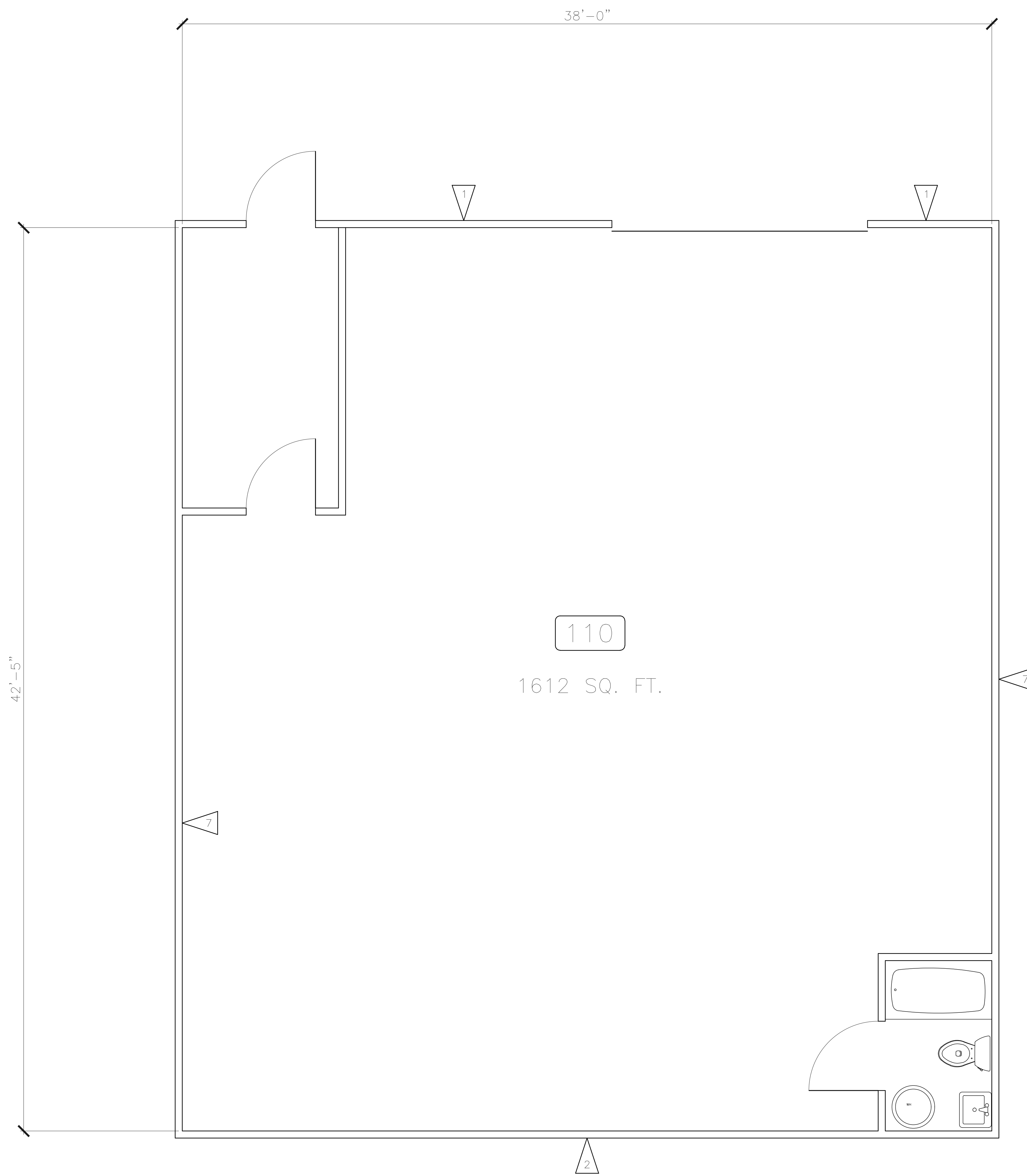
APPROVAL	
DRAWN	
DESIGN	
CHECKED	
APPROVED	

1015 WEST KIRKLAND AVENUE
NASHVILLE, TN
FLOOR PLAN - RM 109

DWG. No.	A109
SCALE:	NOTED
CADFILE:	23STE001
JOB No.	20-STE-003
REV.	



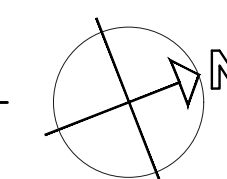
Users\seith.BNL\TECH\Documents\Projects\BNL_Tech_Projects\Wilson\1015 WK Bldg 100\DWG\23STE001.dwg - Jun 07 2023 - 06:27pm - sat



FLAG NOTES

- 1 8" CMU WITH STUCCO, SEE DETAIL A1/A500
- 2 8" BLOCK, SEE DETAIL A2/A500
- 3 12" CONCRETE, SEE DETAIL A3/A500
- 4 8" CMU WITH CONCRETE, SEE DETAIL A4/A500
- 5 6.5" CONCRETE, SEE DETAIL A5/A500
- 6 STEEL STUD WALL WITH METAL SIDING, SEE DETAIL A6/A500
- 7 STEEL STUD WALL WITH 5/8" DRYWALL, SEE DETAIL A7/A500

FLOOR PLAN - RM 110
SCALE: 3/8" = 1'-0"



6/23/2023
 ENGINEER: **RE**
RHODES ENGINEERING AND ENVIRONMENTAL SERVICES, LLC
 PHONE: 615.480.7535
 EMAIL: rhodesengineering@gmail.com
 807 NASHVILLE HWY. SOUTH, SUITE #1
 COLUMBIA, TN 38401
 CIVIL ENVIRONMENTAL
 SITE DEVELOPMENT WATERWASTEWATER

NO.	REVISIONS	DATE	BY	CHKD	DESIGN	APPD

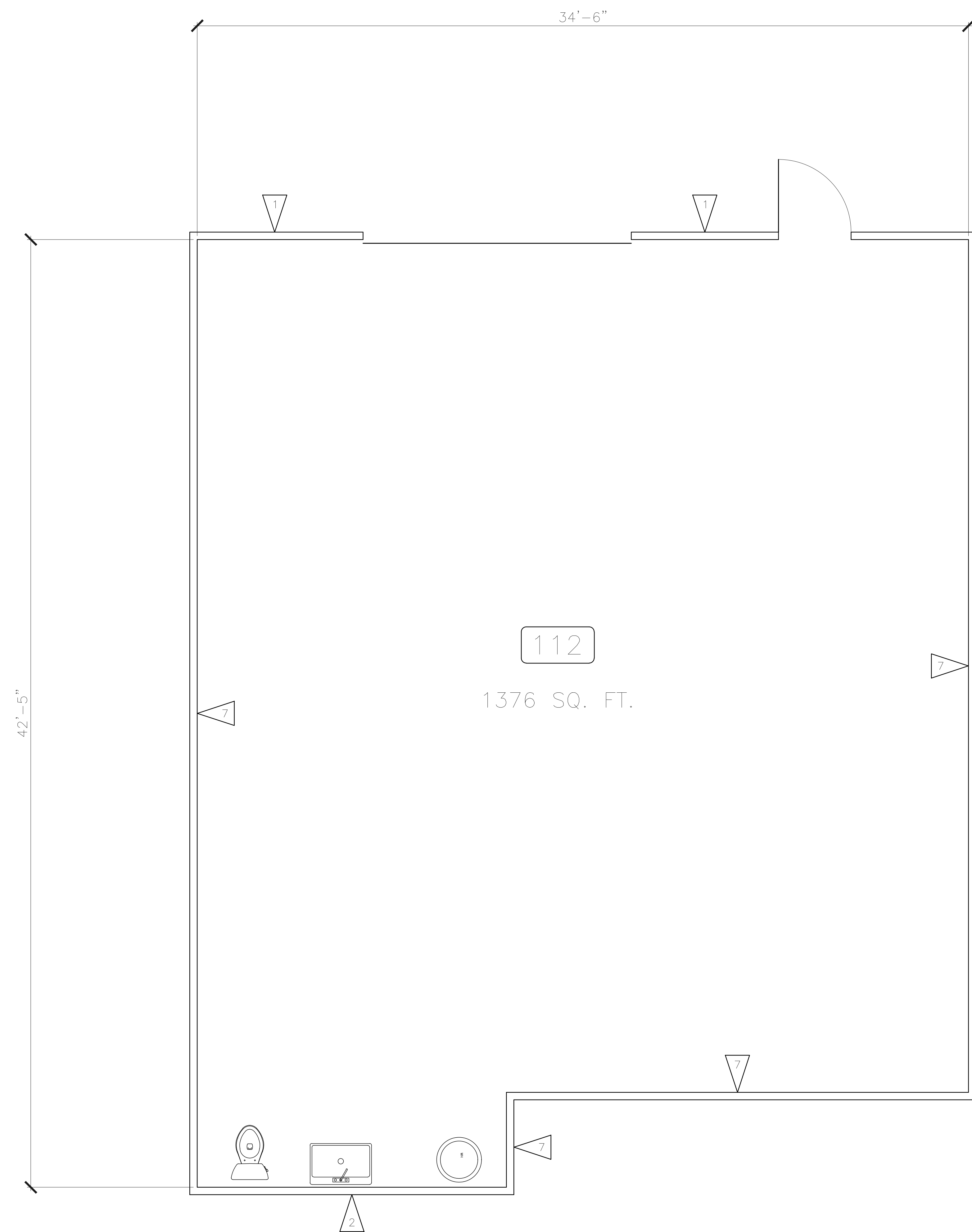
APPROVAL	
DRAWN	
DESIGN	
CHECKED	
APPROVED	

1015 WEST KIRKLAND AVENUE
NASHVILLE, TN
FLOOR PLAN - RM 110

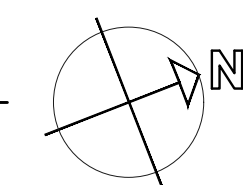
DWG. No.	A110
SCALE:	NOTED
CADFILE:	23STE001
JOB No.	20-STE-003
REV.	



\\users\leth.BNL\TECH\Documents\Projects\BNL_Tech_Projects\Wilson\1015 WK Bldg 1010\DWG\23STE001.dwg - Jun 07 2023 - 06:53pm - sat



FLOOR PLAN - RM 112
 SCALE: 3/8" = 1'-0"



FLAG NOTES

- 1 8" CMU WITH STUCCO, SEE DETAIL A1/A500
- 2 8" BLOCK, SEE DETAIL A2/A500
- 3 12" CONCRETE, SEE DETAIL A3/A500
- 4 8" CMU WITH CONCRETE, SEE DETAIL A4/A500
- 5 6.5" CONCRETE, SEE DETAIL A5/A500
- 6 STEEL STUD WALL WITH METAL SIDING, SEE DETAIL A6/A500
- 7 STEEL STUD WALL WITH 5/8" DRYWALL, SEE DETAIL A7/A500



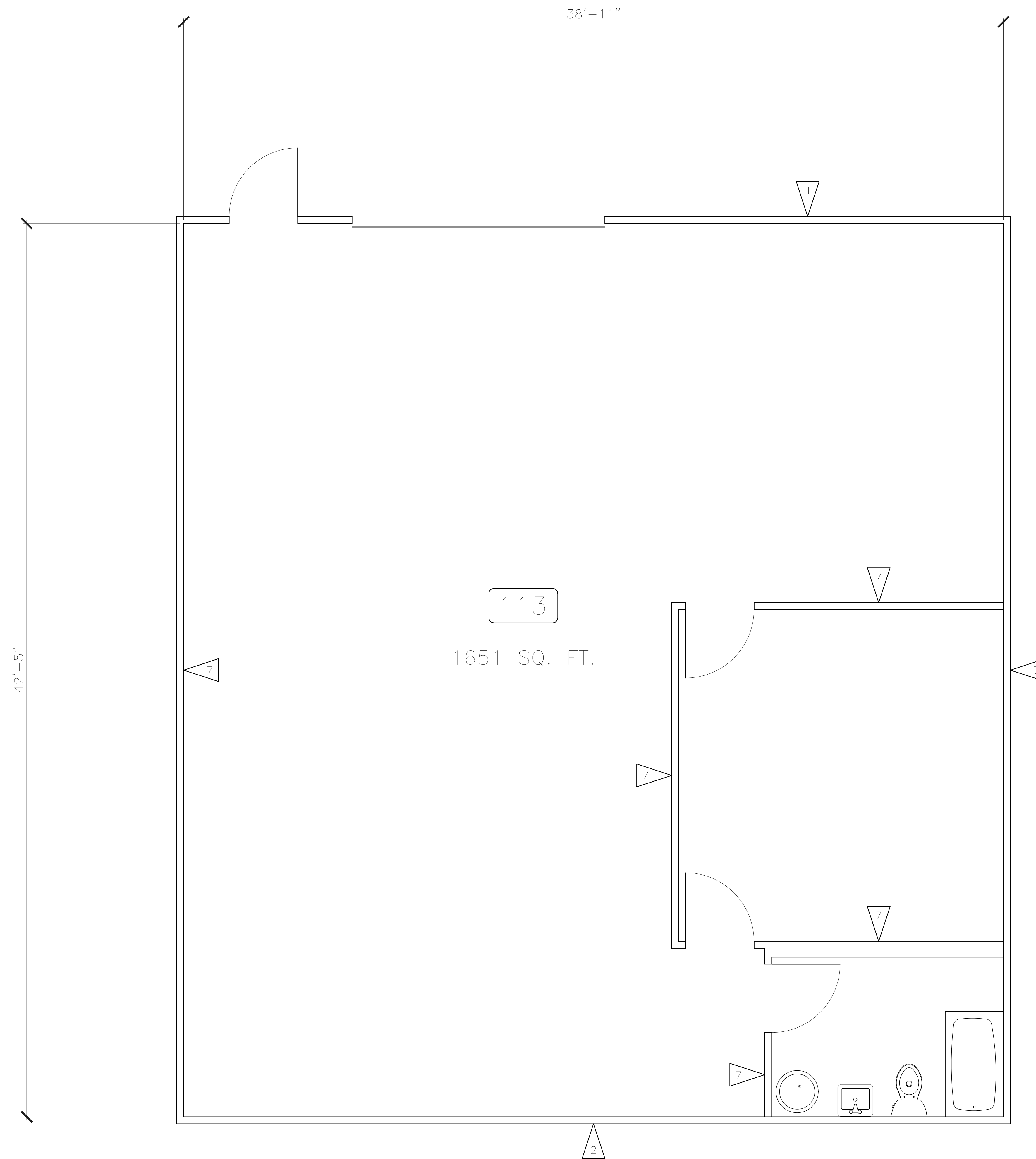
NO.	REVISIONS	DATE	DRAWN	CHKD	DESIGN	APPD

APPROVAL	
DRAWN	
DESIGN	
CHECKED	
APPROVED	

1015 WEST KIRKLAND AVENUE
 NASHVILLE, TN
FLOOR PLAN - RM 112

DWG. No.	A112
SCALE:	NOTED
CADFILE:	23STE001
JOB No.	20-STE-003
REV.	

Users\seith.BNL\TECH\Documents\Projects\BNL_Tech_Projects\Wilson\1015 WK Bldg 100\DWG\23STE001.dwg - Jun 07 2023 - 06:35pm - sat



FLAG NOTES

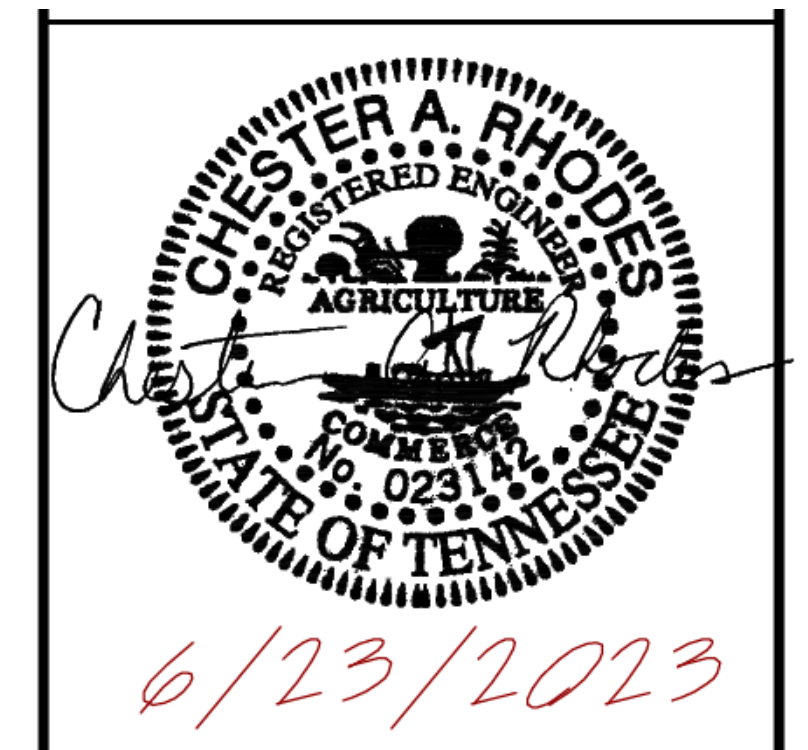
- 1 8" CMU WITH STUCCO, SEE DETAIL A1/A500
- 2 8" BLOCK, SEE DETAIL A2/A500
- 3 12" CONCRETE, SEE DETAIL A3/A500
- 4 8" CMU WITH CONCRETE, SEE DETAIL A4/A500
- 5 6.5" CONCRETE, SEE DETAIL A5/A500
- 6 STEEL STUD WALL WITH METAL SIDING, SEE DETAIL A6/A500
- 7 STEEL STUD WALL WITH 5/8" DRYWALL, SEE DETAIL A7/A500



NO.	REVISIONS	DATE	BY	CHKD	DESIGN	APPD

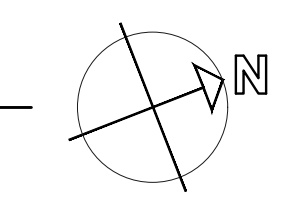
APPROVAL	
DRAWN	
DESIGN	
CHECKED	
APPROVED	

1015 WEST KIRKLAND AVENUE
NASHVILLE, TN
FLOOR PLAN - RM 113



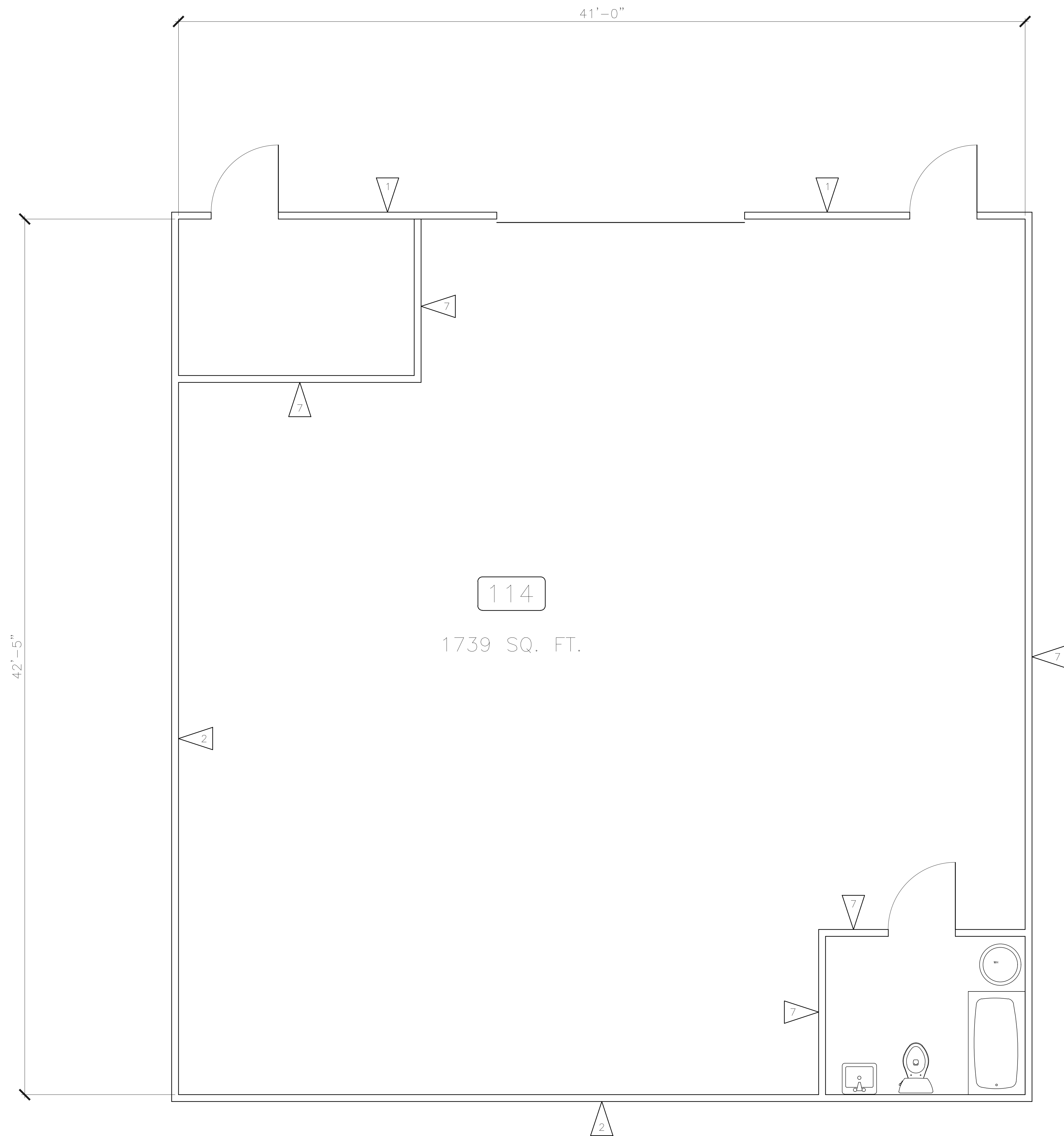
ENGINEER:
RE
RHODES ENGINEERING
AND ENVIRONMENTAL
SERVICES, LLC
PHONE: 615.480.7535
EMAIL: rhodesengineering@gmail.com
807 NASHVILLE HWY. SOUTH, SUITE #1
COLUMBIA, TN 38401
CIVIL ENVIRONMENTAL
SITE DEVELOPMENT WATERWASTEWATER

FLOOR PLAN - RM 113
SCALE: 3/8" = 1'-0"



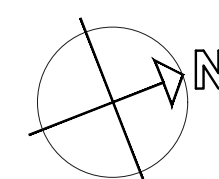
DWG. No.	A113
SCALE:	NOTED
CADFILE:	23STE001
JOB No.	20-STE-003
REV.	

Users\seith.B\TECH\Documents\Projects\B\N\ Tech Projects\Wilson\1015 WK Bldg 100\DWG\23STE001.dwg - Jun 07 2023 - 06:39pm - sat



FLOOR PLAN - RM 114

SCALE: 3/8" = 1'-0"



FLAG NOTES

- 1 8" CMU WITH STUCCO, SEE DETAIL A1/A500
- 2 8" BLOCK, SEE DETAIL A2/A500
- 3 12" CONCRETE, SEE DETAIL A3/A500
- 4 8" CMU WITH CONCRETE, SEE DETAIL A4/A500
- 5 6.5" CONCRETE, SEE DETAIL A5/A500
- 6 STEEL STUD WALL WITH METAL SIDING, SEE DETAIL A6/A500
- 7 STEEL STUD WALL WITH 5/8" DRYWALL, SEE DETAIL A7/A500



NO.	REVISIONS	DATE	BY	CHKD	DESIGN	APPD

APPROVAL	
DRAWN	
DESIGN	
CHECKED	
APPROVED	

6/23/2023

ENGINEER: **RE**

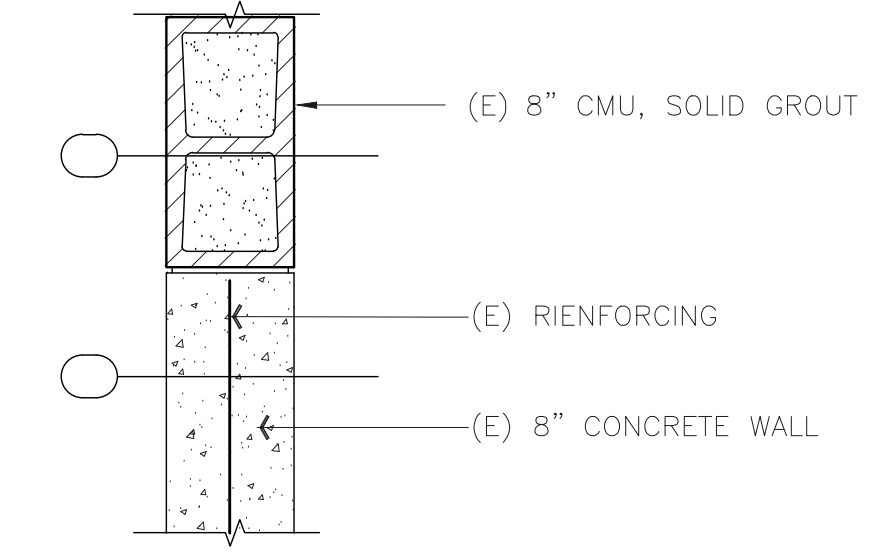
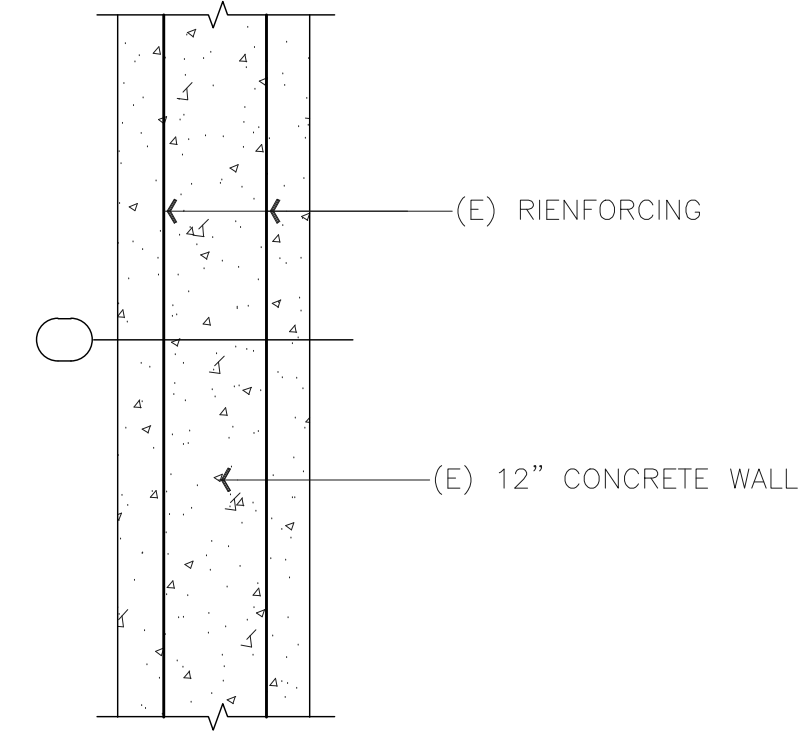
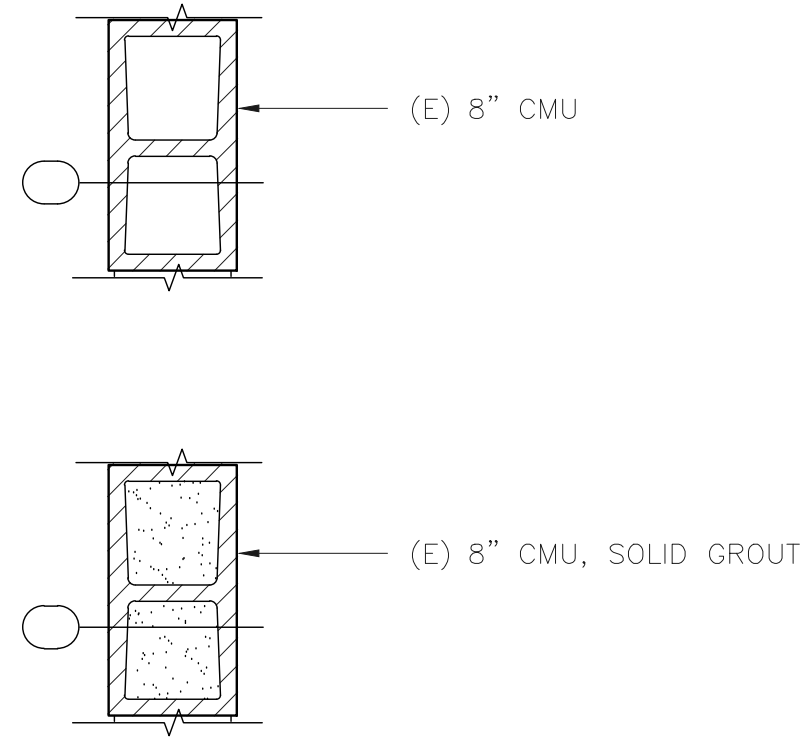
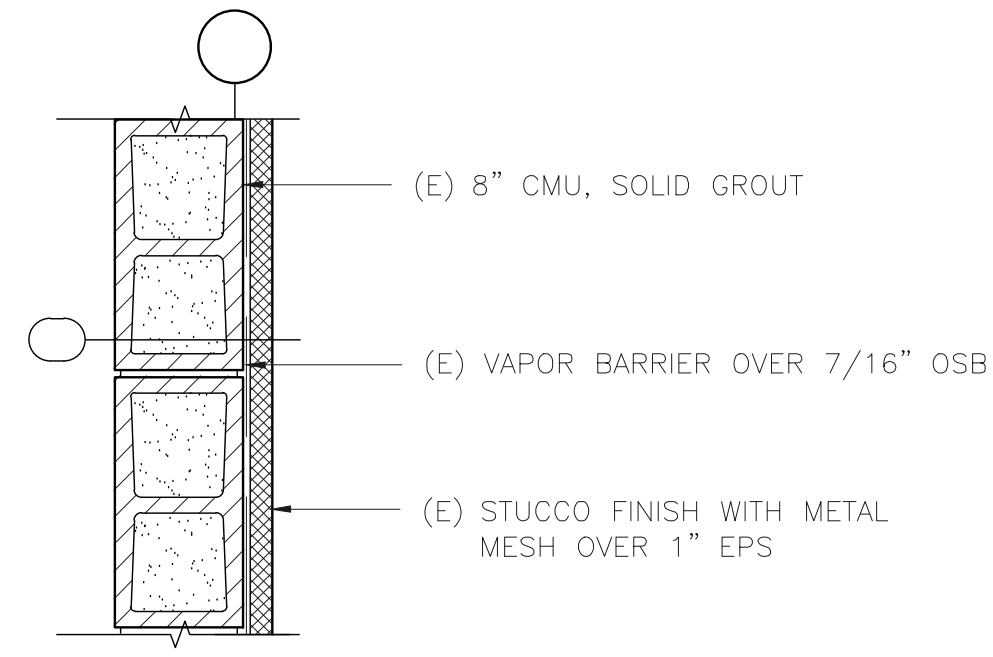
RHODES ENGINEERING AND ENVIRONMENTAL SERVICES, LLC
 PHONE: 615.480.7535
 EMAIL: rhodesengineering@gmail.com
 807 NASHVILLE HWY. SOUTH, SUITE #1
 COLUMBIA, TN 38401
 CIVIL ENVIRONMENTAL
 SITE DEVELOPMENT WATERWASTEWATER

1015 WEST KIRKLAND AVENUE
 NASHVILLE, TN
 FLOOR PLAN - RM 114

DWG. No. **A114**

SCALE: NOTED
 CADFILE: 23STE001

JOB No.	REV.
20-STE-003	



A1

(E) 8" CMU WALL WITH STUCCO EXTERIOR 1"=1'-0"

A2

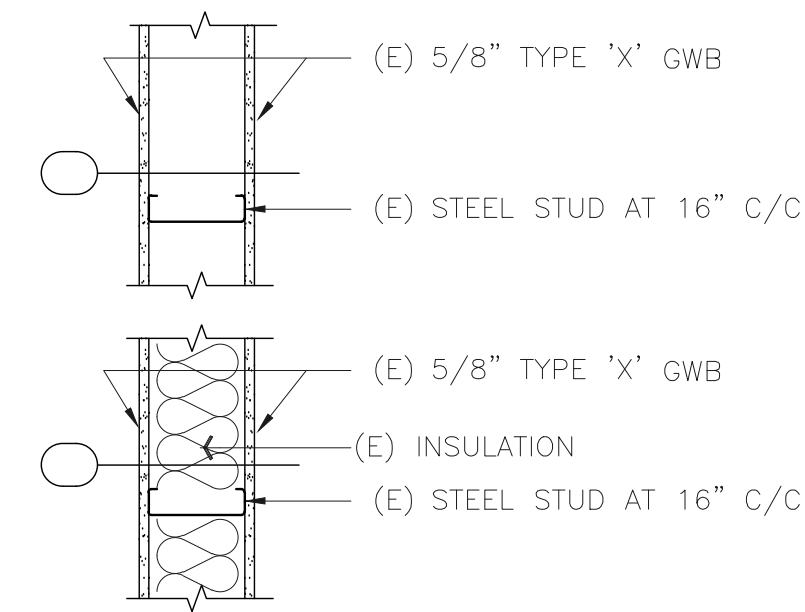
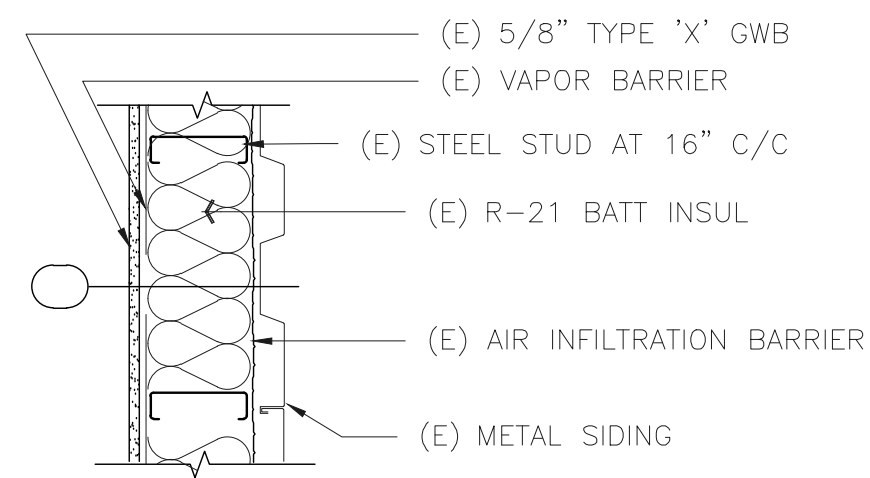
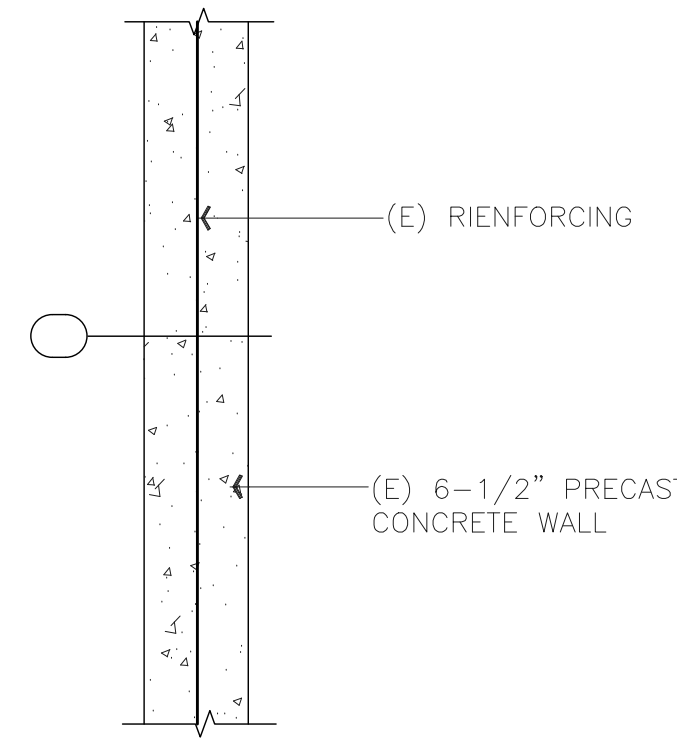
(E) 8" CMU WALL 1"=1'-0"

A3

(E) 12" CONCRETE WALL 1"=1'-0"

A4

(E) 8" CMU WALL OVER 8" CONCRETE WALL 1"=1'-0"



A5

(E) 6.5" PRECAST CONCRETE WALL 1"=1'-0"

A6

(E) STEEL STUD WALL WITH METAL SIDING 1"=1'-0"

A7

(E) STEEL STUD WALL WITH 5/8" TYPE 'X' GWB 1"=1'-0"

DATE	
REVISIONS	
NO.	
APPROVAL	
DRAWN	
DESIGN	
CHECKED	
APPROVED	

APPROVAL	
DRAWN	
DESIGN	
CHECKED	
APPROVED	

ENGINEER: **RE**
RHODES ENGINEERING AND ENVIRONMENTAL SERVICES, LLC
 PHONE: 615.480.7535
 EMAIL: rhodesengineering@gmail.com
 807 NASHVILLE HWY. SOUTH, SUITE #1
 COLUMBIA, TN 38401
 CIVIL ENVIRONMENTAL
 SITE DEVELOPMENT WATERWASTEWATER

1015 WEST KIRKLAND AVENUE
 NASHVILLE, TN
 WALL DETAILS

DWG. No. **A500**
 SCALE: NOTED
 CADFILE: 23STE001
 JOB No. 20-STE-003
 REV.

