



WAREHOUSE/
FLEX SPACE
FOR SUBLEASE

OAKESDALE COMMERCE CENTER

1000 SW 34th St, Renton, WA 98057

ROBERT MESSMER, CCIM
425.458.3902 | 206.948.1577 (c)
rmessmer@rgmcommercial.com

JENNIFER HEYL
425.458.3908
jennifer@rgmcommercial.com

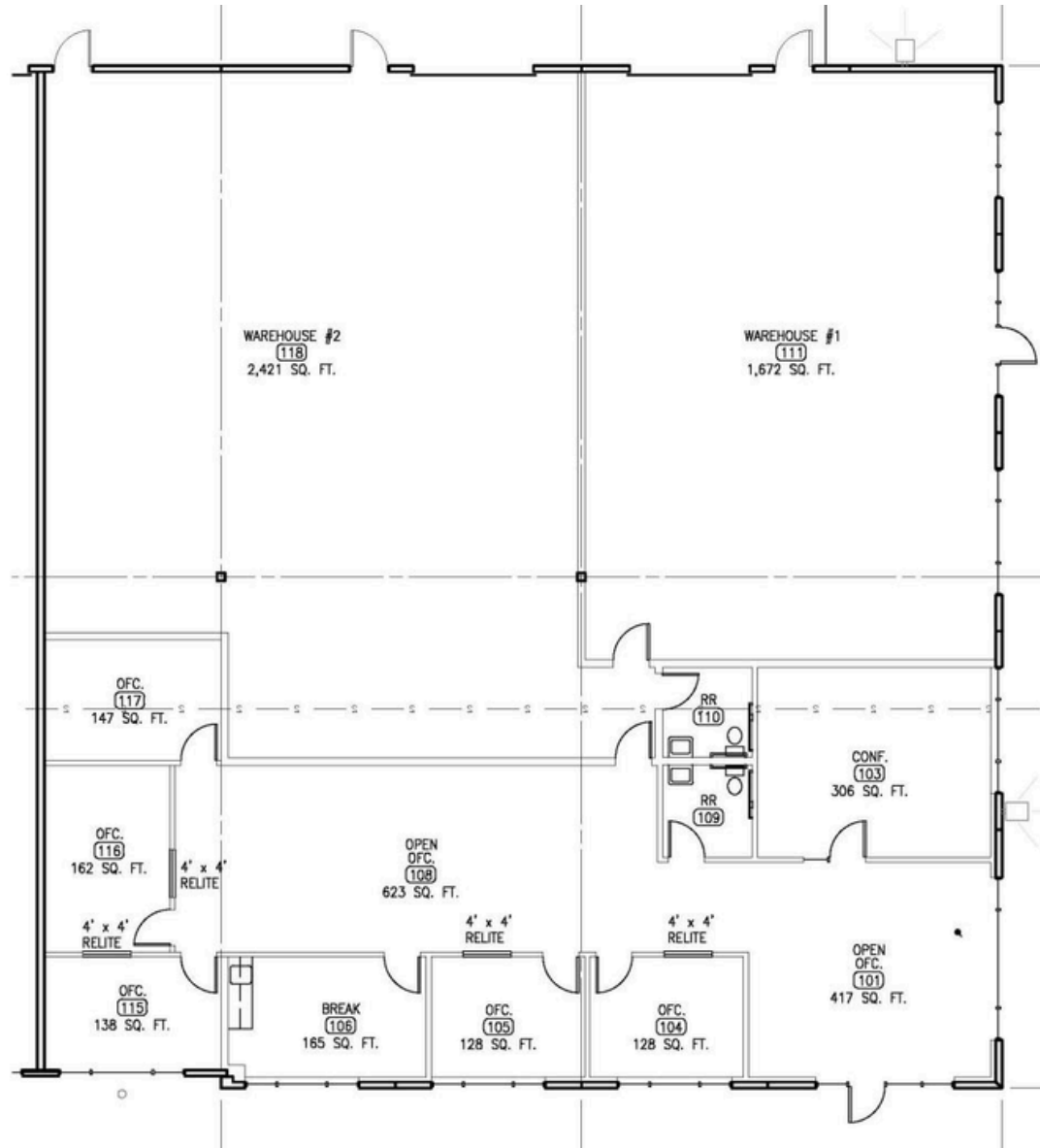
10423 Main Street #5, Bellevue, WA 98004
425.452.3052 | rgmcommercial.com

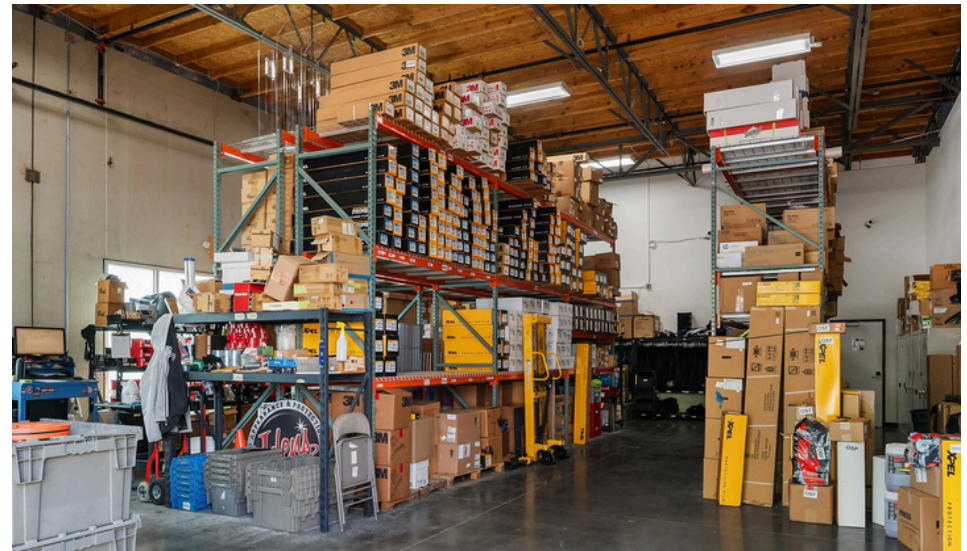


Prominent corner location warehouse/flex space available for sublease in Renton

Suite Available	Building W2 Suite N
Square Feet	6,822 SF Total (including 2,594 SF of Office)
Rental Rate	\$1.35/SF/mo. plus NNN (2026 Est. \$0.53/SF/mo.)
Suite Details	6,822 SF Total: 4,228 SF Warehouse and 2,594 SF Office. Office area includes lobby/reception, six private offices, a 10-person conference room, open office area, and lunchroom.
Building Signage	Highly visible corner location building signage
Ceiling Ht./Doors	16' Clear Height Two 10' x 10' grade level doors
Electrical Available	100A 480/277V 3-Phase & 150A 120/208V 3 Phase
Parking	Abundant parking (approx. 3.0/1,000 SF)
Communication/ Fiber	Comcast Business and Fiber options
Building Age	2005 (Masonry Construction)
Location	Conveniently located off of SR-167, I-5, and I-405
Master Lease Term	Master Lease expires December 31, 2029







ROBERT MESSMER, CCIM
425.458.3902 | 206.948.1577 (c)
rmessmer@rgmcommercial.com

JENNIFER HEYL
425.458.3908
jennifer@rgmcommercial.com

425.452.3052 | rgmcommercial.com

The information contained herein has been received from sources we deem reliable. While we have no reason to doubt its accuracy, we do not guarantee it. You are advised to independently verify all information.





ROBERT MESSMER, CCIM
425.458.3902 | 206.948.1577 (c)
rmessmer@rgmcommercial.com

JENNIFER HEYL
425.458.3908
jennifer@rgmcommercial.com

425.452.3052 | rgmcommercial.com

The information contained herein has been received from sources we deem reliable. While we have no reason to doubt its accuracy, we do not guarantee it. You are advised to independently verify all information.





ROBERT MESSMER, CCIM
425.458.3902 | 206.948.1577 (c)
rmessmer@rgmcommercial.com

JENNIFER HEYL
425.458.3908
jennifer@rgmcommercial.com

425.452.3052 | rgmcommercial.com

The information contained herein has been received from sources we deem reliable. While we have no reason to doubt its accuracy, we do not guarantee it. You are advised to independently verify all information.





EATERIES

- 1 La Mexicanal
- 2 Ms. Helen's Soul Bistro
- 3 Triumph Valley
- 4 Saimin Says
- 5 Malakor Thai Restaurant
- 6 Megabites Deli
- 7 The Spot Sports Bar & Grill
- 8 Jersey Mike's
- 9 Yummy Kitchen
- 10 Subway

SHOPPING/ENTERTAINMENT/RECREATION

- 1 IKEA
- 2 Center Cycle
- 3 Oberto
- 4 Forty First Place
- 5 Springbrook Trail
- 6 99 Ranch Market
- 7 Silver Superstore
- 8 Mor Furniture for Less
- 9 Makers' Mercantile
- 10 Garagiste

CAFES

- 1 Candor Coffee
- 2 Starbucks
- 3 Starbucks
- 4 Good Vibes Espresso

ROBERT MESSMER, CCIM
425.458.3902 | 206.948.1577 (c)
rmessmer@rgmcommercial.com

JENNIFER HEYL
425.458.3908
jennifer@rgmcommercial.com

425.452.3052 | rgmcommercial.com

The information contained herein has been received from sources we deem reliable. While we have no reason to doubt its accuracy, we do not guarantee it. You are advised to independently verify all information.

