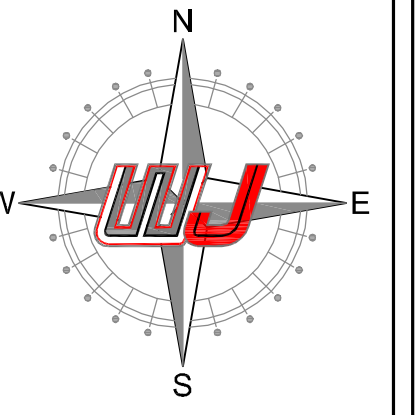
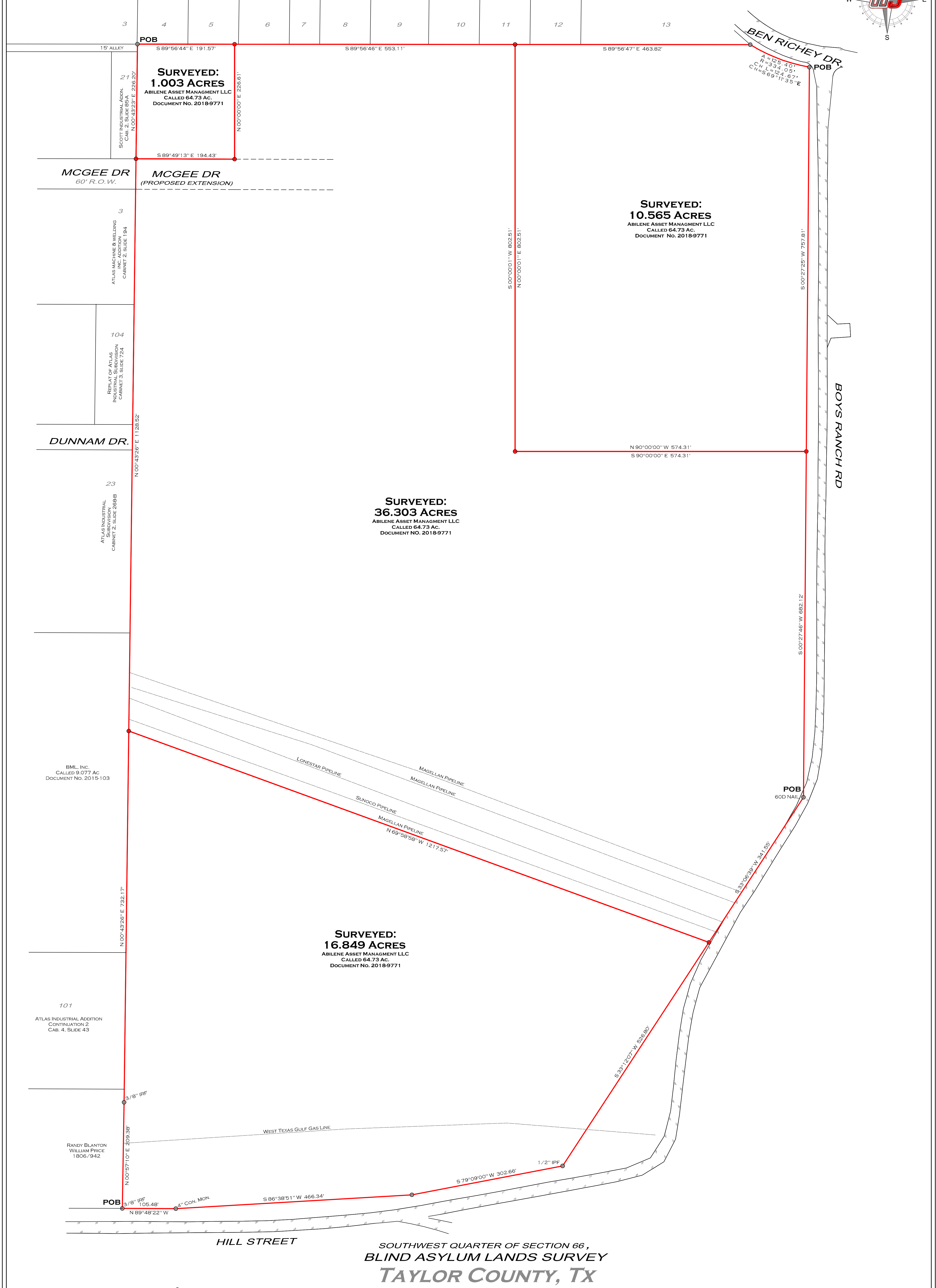


SURVEYED: MULTIPLE TRACTS - CITY OF ABILENE, TAYLOR COUNTY, TEXAS



SECTION 5
SOUTH TREADAWAY & INDUSTRIAL
BLVD. PLAZA ADDITION
CAB. 1, SLIDE 226



**SURVEYED:
1.003 ACRES**
ABILENE ASSET MANAGEMENT LLC
CALLED 64.73 AC.
DOCUMENT No. 2018-9771

**SURVEYED:
10.565 ACRES**
ABILENE ASSET MANAGEMENT LLC
CALLED 64.73 AC.
DOCUMENT No. 2018-9771

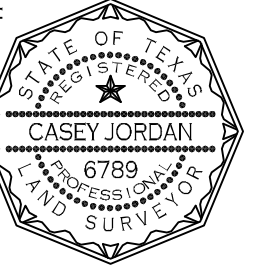
**SURVEYED:
36.303 ACRES**
ABILENE ASSET MANAGEMENT LLC
CALLED 64.73 AC.
DOCUMENT No. 2018-9771

**SURVEYED:
16.849 ACRES**
ABILENE ASSET MANAGEMENT LLC
CALLED 64.73 AC.
DOCUMENT No. 2018-9771

SOUTHWEST QUARTER OF SECTION 66,
BLIND ASYLUM LANDS SURVEY
TAYLOR COUNTY, TX

NOTE: BEARINGS ARE BASED ON THE TEXAS STATE PLANE COORDINATE SYSTEM, TEXAS NORTH CENTRAL ZONE 4202, N.A.D. 1983.

I, CASEY JORDAN, DO HEREBY STATE THAT THIS PLAT REPRESENTS AN ON THE GROUND SURVEY MADE UNDER MY DIRECT SUPERVISION ON JUNE 26, 2023.



REGISTERED PROFESSIONAL LAND SURVEYOR No. 6789



10819 US Hwy 69 N
TYLER, TX 75706
903-534-9000

MANAGER: B.B.B.	CREW CHIEF: R.R.
ADDRESS: 4780 BOYS RANCH RD.	
CITY/COUNTY: ABILENE, TAYLOR	
SECTION No.: 66	
SUBDIVISION: XXX	
LOT/BLOCK No.: XXX	
CLIENT: HMI	

PREPARED BY: B.B.B. JUNE 26, 2023
JOB No. 23-0773
80 0 80
SCALE: 1" = 80'

- = COTTON SPINDLE FOUND/SET
- /● = 1/2" IRON ROD FOUND/SET
- x — x — x — x — x — x — = FENCE
- — — — — = OVERHEAD ELECTRIC LINE
- ⊗ = WATER METER
- ⊕ = POWER POLE
- ⊙ = MANHOLE
- ⊗ = GAS METER
- ⊕ = ELECTRIC METER
- ⊙ = TELE. PEDestal
- ⊕ = FIRE HYDRANT
- ⊙ = SEPTIC LID/EQUIPMENT
- ⊗ = PROpane TANK
- ⊕ = AIR CONDITIONER
- ⊙ = POINT FOR CORNER
- ⊗ = PIPELINE MARKER
- ⊕ = WATER VALVE