

Delia Plaza

Lease Opportunity

AVAILABLE SPACE 10820
10820 NW 58 ST. DORAL, FL. 33178

► Highlights



**VISITORS
PER YEAR**
400,000

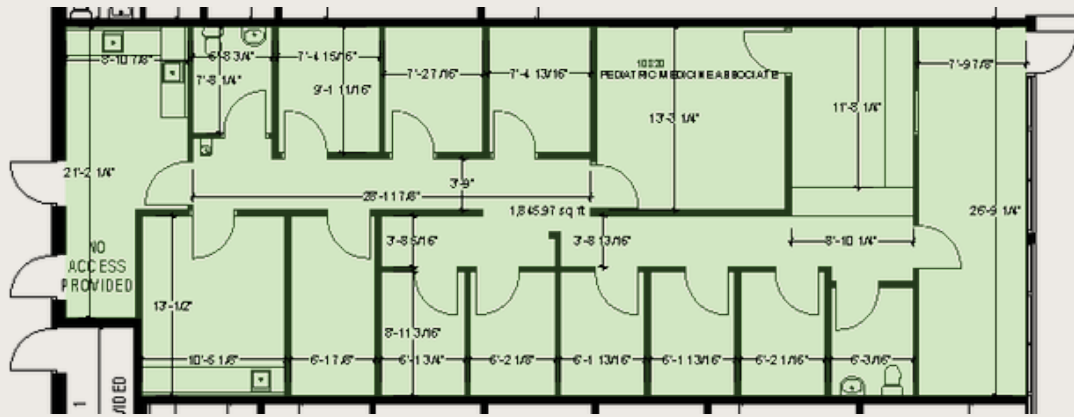
POPULATION
385,655



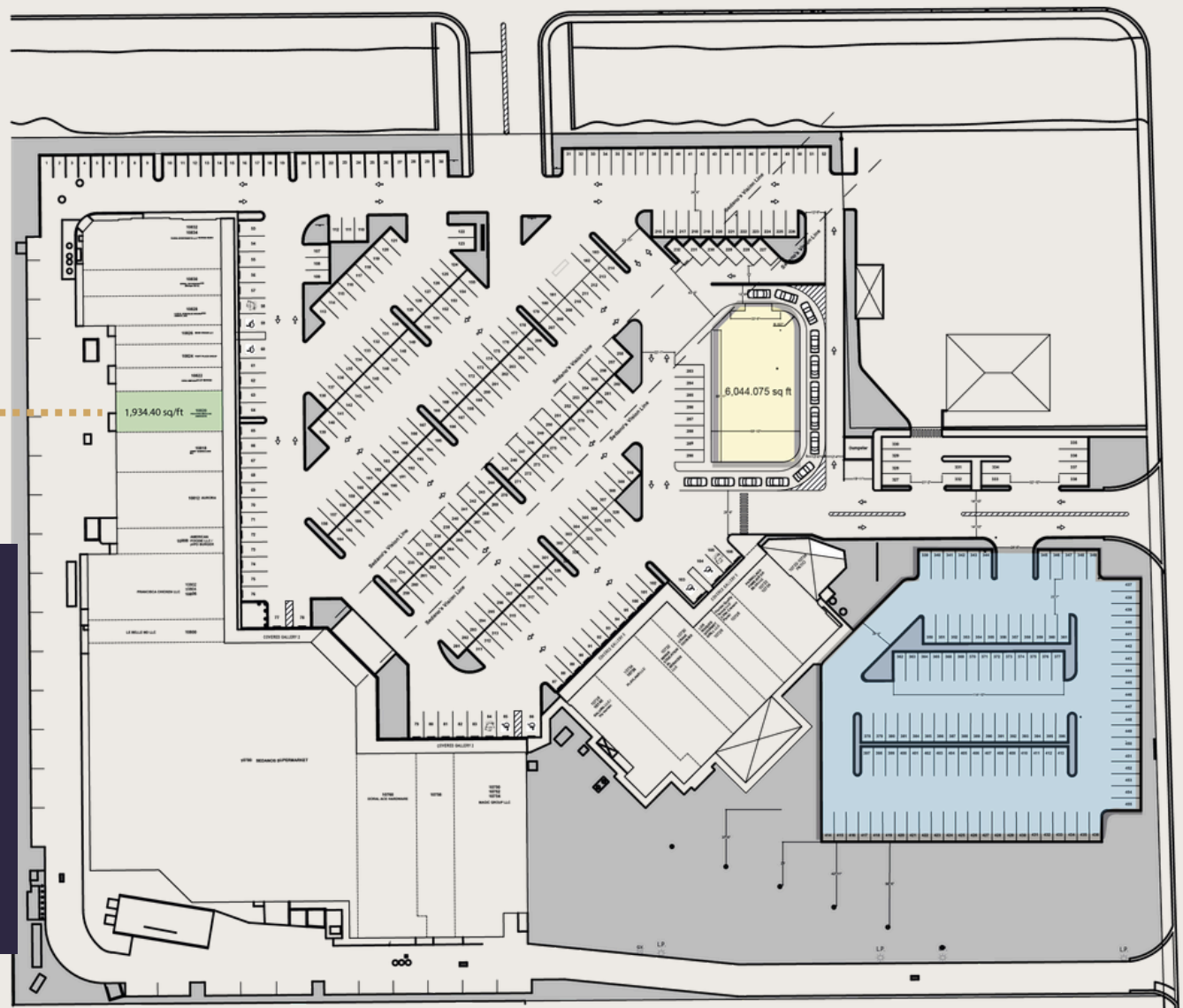
200,000
People commuting
to work daily



\$90,000
Average
household
income



13500 VPD



30000 VPD

Available Space 10820
Floor Plan



► Features

TYPE: Professional Medical Office

COOLING: Central Unit

LEASE TERM: 5 YEARS

COUNTY: Miami Dade

► Property Details

INTERIOR DETAILS AND FEATURES:

SIZE: 1,934.40 SQ/FT

First Floor Entry

FLOORING: Vinyl

Smoke Detector

Get in touch and
schedule a visit

M: 786.586.2492
E: aboria@borluv.com

M: 786.376.9941
E: clang@borluv.com