

FOR SALE

18 E Mechanic St.
Shelbyville, IN

PROPERTY DETAILS

- **Residential Building: 2,576 SF**

- **966 SF basement**

- **Well-maintained home/office**

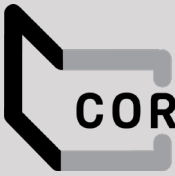
in the growing community of

Shelbyville

 **CONTACT**

Ben Cohen
SVP, Brokerage
317-754-6245
bcohen@cciin.com

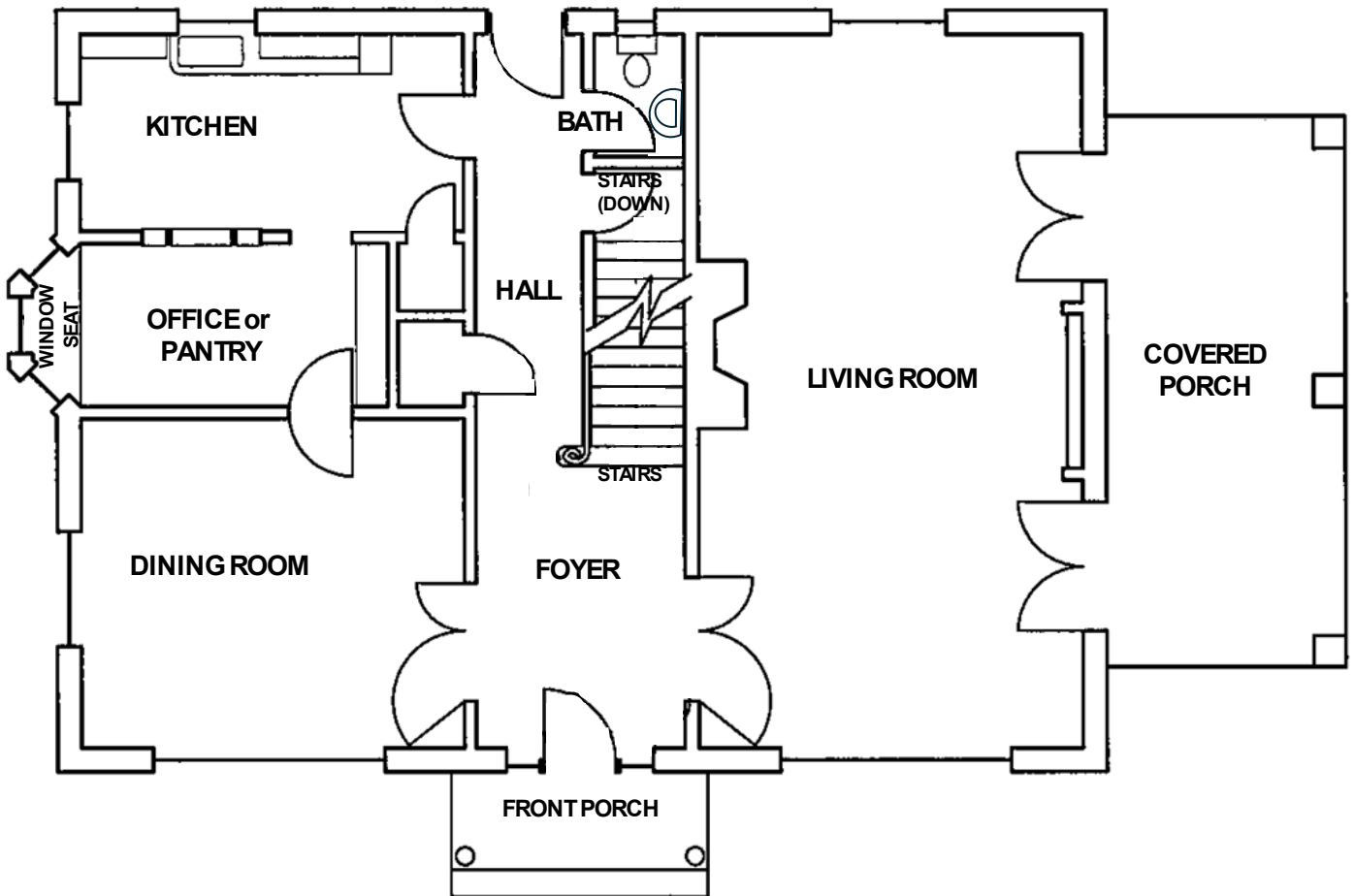
HQ: Cornerstone Companies, Inc.
8902 N Meridian Street, Suite 205
Indianapolis, IN | 317.841.9900
cornerstonecompaniesinc.com



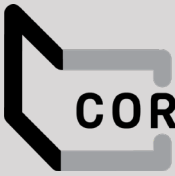
CORNERSTONE

FLOOR PLAN

18 E Mechanic St. Shelbyville, IN



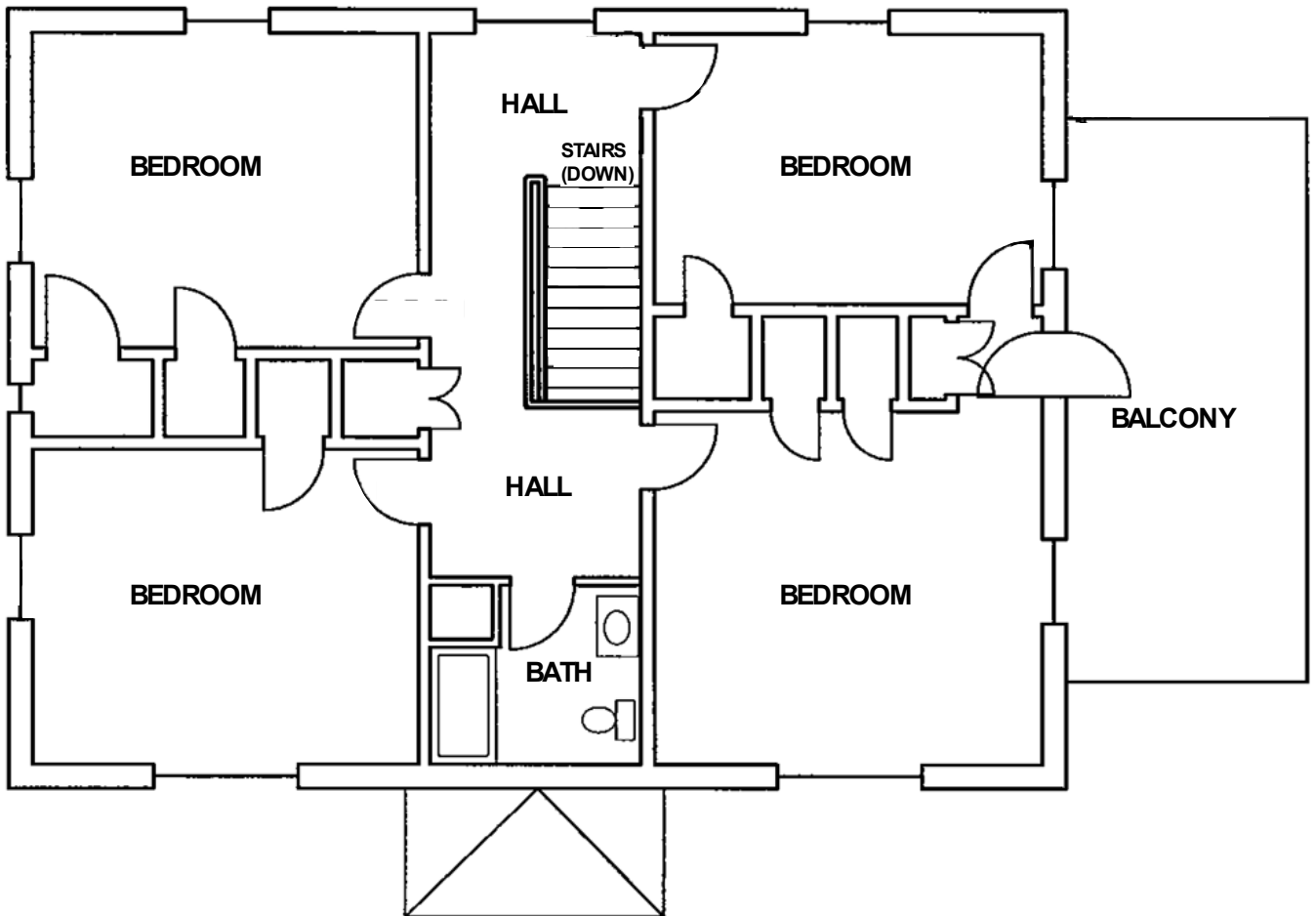
FIRST FLOOR



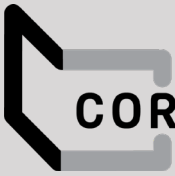
CORNERSTONE

FLOOR PLAN

18 E Mechanic St. Shelbyville, IN



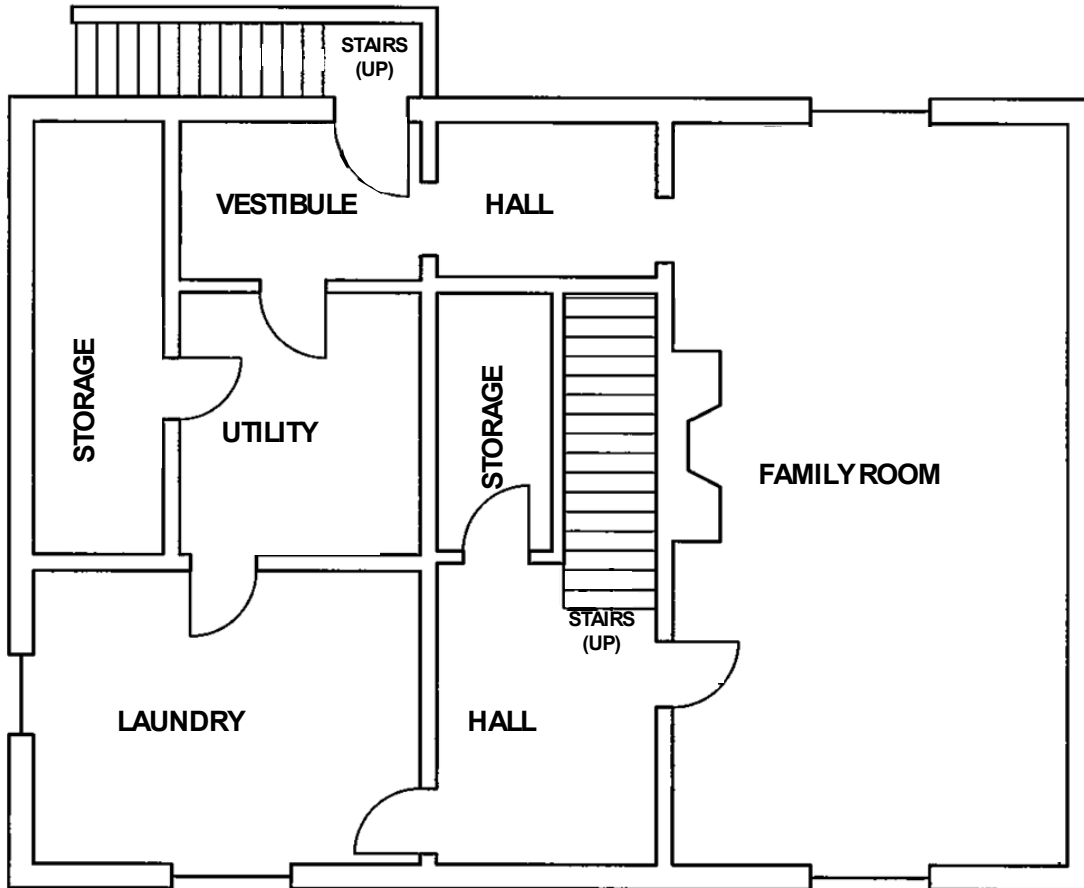
SECOND FLOOR



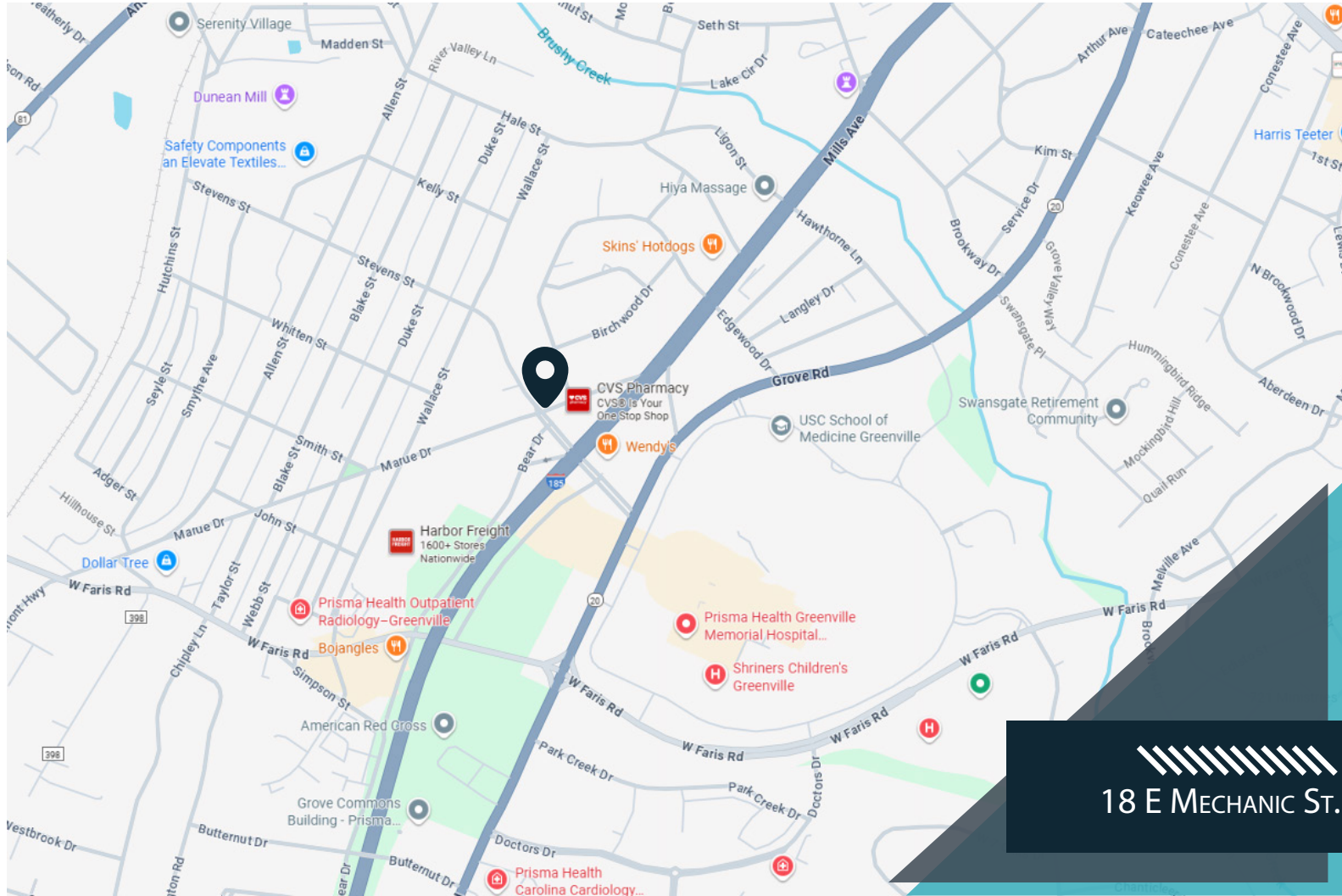
CORNERSTONE

FLOOR PLAN

18 E Mechanic St. Shelbyville, IN



BASEMENT



18 E MECHANIC ST.

DEMOGRAPHICS (5 - mile radius)

- 26,633 Population
- 40 Median Age
- 10,775 Households
- \$64,393 Median Household Income
- \$81,776 Average Household Income



CONTACT

Ben Cohen
 SVP, Brokerage
 317.754.6245
 bcohen@cciin.com

Cornerstone Companies, Inc.
 8902 N Meridian Street, Suite 205
 Indianapolis, IN 46260

