



OFFICE SPACE FOR LEASE

4917 CENTRE POINTE DRIVE

NORTH CHARLESTON, SOUTH CAROLINA 29418



**PROFESSIONAL OFFICE SPACE
IN NORTH CHARLESTON**



**CLASS A FACILITY PACKED
WITH AMENITIES**



**ONSITE PARKING AND
FLEXIBLE LAYOUT**



**CENTRALLY LOCATED
NEAR I-526 AND I-26**

SCHEDULE A TOUR TODAY

PROPERTY OVERVIEW



**NEWLY
CONSTRUCTED**



**FIBER
INTERNET**



**FLEXIBLE
COWORKING SPACE**



**SHARED ROOFTOP GATHERING
AND EVENT SPACES**



**24/7 KEY
FOB ACCESS**



**JANITORIAL
SERVICES**

OFFERING SUMMARY

14,526 SF
BUILDING SIZE

0.77 ACRES
LOT SIZE

2021
YEAR BUILT

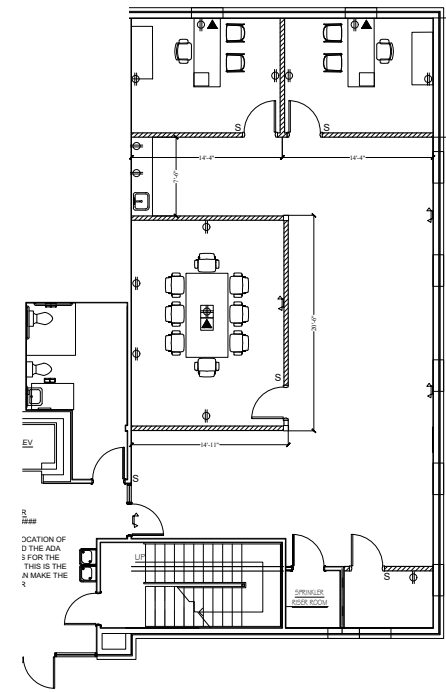
104,000
TRAFFIC COUNT

47 Spaces
SITE PARKING

General Commercial
ZONING

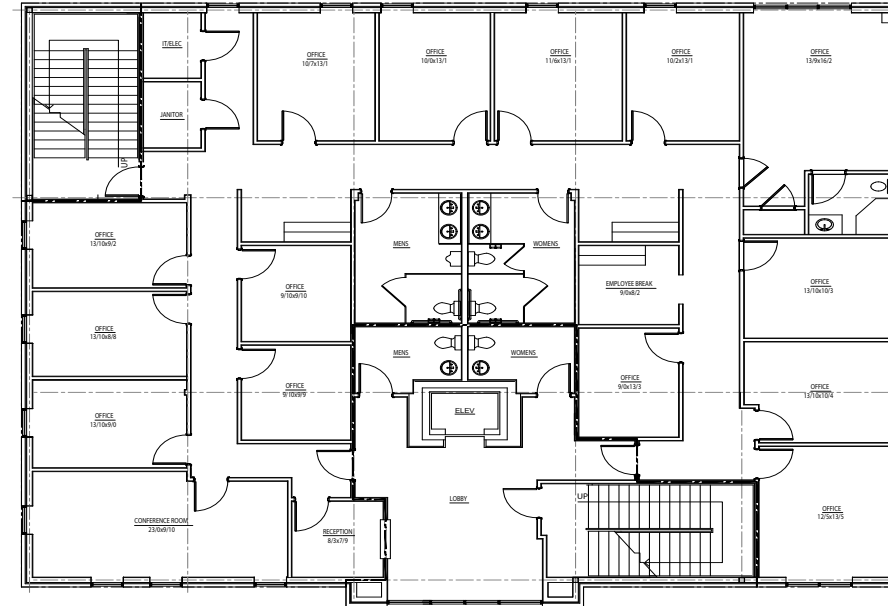
Charleston - North Charleston
MARKET

31 - North Charleston Area Inside I-526
SUBMARKET



FIRST FLOOR

± 1,992 SF



SECOND FLOOR

± 4,614 SF

FULLY FURNISHED

AVAILABLE SPACE

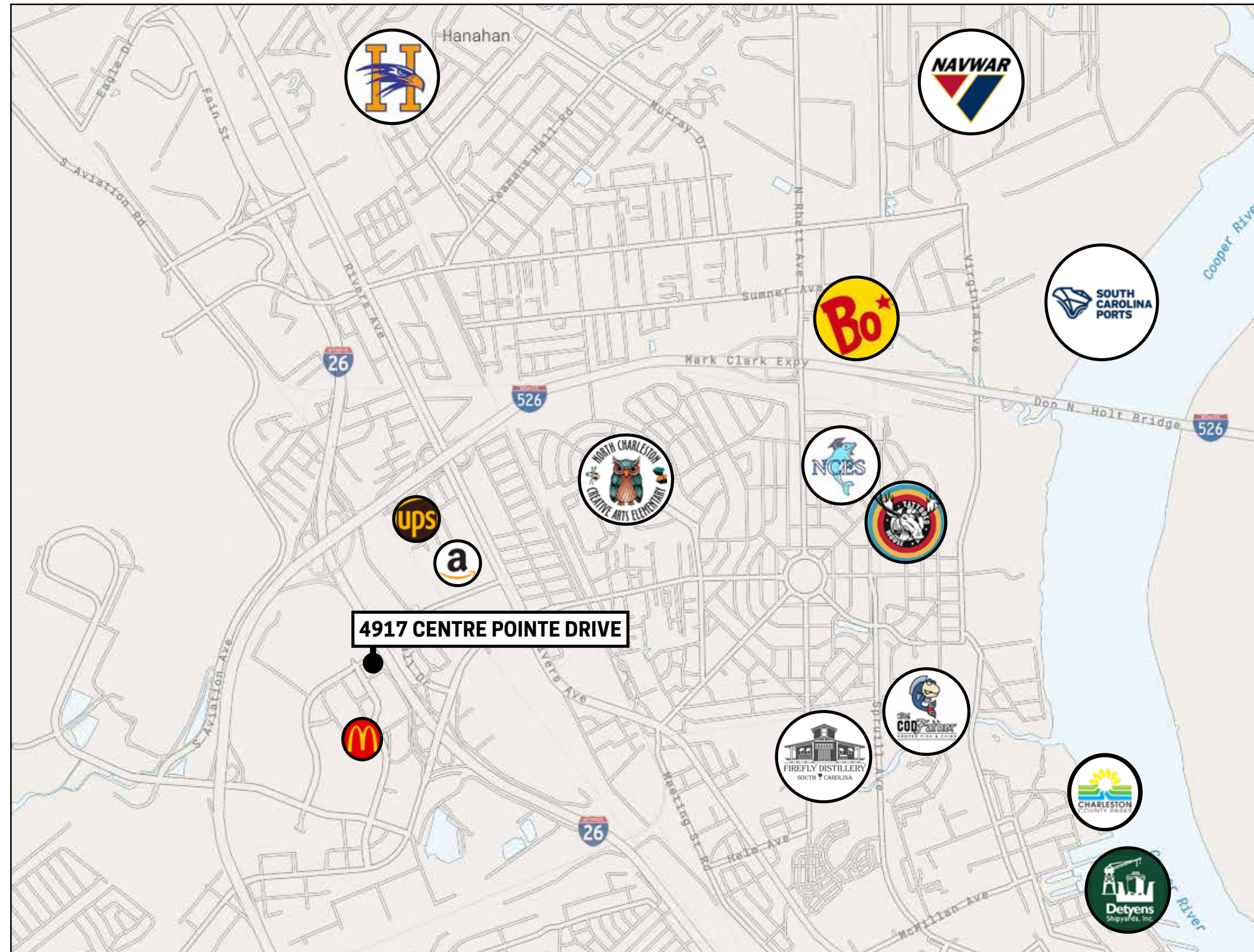
4917 CENTRE POINTE DRIVE



PREMIER LOCATION

4917 Centre Pointe Drive offers upscale, Class-A office space in the heart of North Charleston. Countless food, retail, and professional locations are a quick walk or drive away.

Short travel times to major landmarks like Boeing, Tanger Outlets, South Carolina North Charleston Port, NAVFAC, Park Circle, Charleston International Airport, and many more!



CALDWELL COMMERCIAL TEAM



BOB CALDWELL
CCRE PRESIDENT AND SIOR

LICENSED IN SOUTH CAROLINA,
NORTH CAROLINA, AND GEORGIA
ACTIVE SIOR MEMBER SINCE 2008



ROBERT ROWAN
SENIOR PROPERTY MANAGER

CERTIFIED PROPERTY MANAGER,
LEED ACCREDITED PROFESSIONAL,
ACTIVE SC IREM CHAPTER 72 MEMBER



KACEY GOUGE
MARKET ANALYST



JOSH STERKEL
PROPERTY MANAGER



LAURA COX GOE
CONTROLLER



ALEAH WARNER
MARKETING AND GRAPHIC DESIGN



AMY VINSON
ACCOUNTING COORDINATOR



CALDWELL
COMMERCIAL
REAL ESTATE
SERVICES

CONTACT:

BOB CALDWELL, SIOR

BOB@CALDWELLCOMMERCIAL.COM

843.566.1888 | CALDWELLCOMMERCIAL.COM