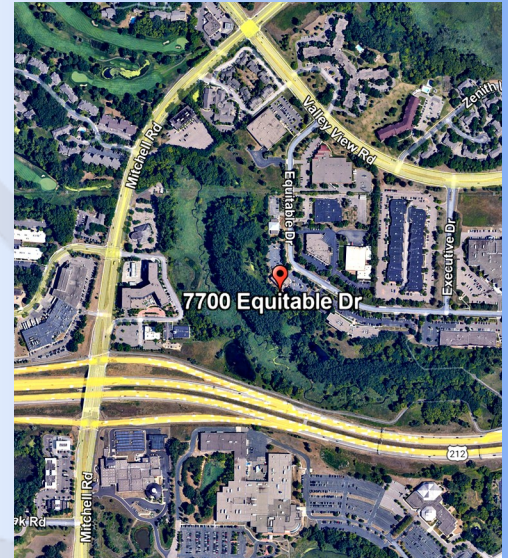


OFFICE FOR LEASE

7700 Equitable Drive, Suite 200
Eden Prairie, MN 55344



SUMMERHILL
Commercial Real Estate, LLC



LEASE DETAILS:

7700 Equitable Drive, Eden Prairie, MN 55344

Suite 200:	1,633 sf (available 11/1)
Base Rent:	\$12.00 per SF
RE Taxes and Common Area Expenses:	\$10.68 per SF (est.)

FEATURES:

- Attractive, clean image, 2 story professional office building with an elevator.
- Suite 200 is a desirable 2nd floor corner space with abundant windows, (3) private offices, (1) open large cubicle office or copy/work room and (1) conference room.
- The building has ample parking and is adjacent to Purgatory Creek.
- Quiet location yet near Highway 212, Prairie Center Drive and Mitchell Road.
- Space availability overlooks a beautiful wooded nature area.
- Many amenities are nearby include Eden Prairie Center, restaurants, banking, grocery, extensive retail and much more.
- Excellent freeway access nearby as well as ample nature trails.

**All information in this brochure is deemed reliable, but not guaranteed.*



CONTACT:

Patrick Lensing, CPM

plensing@summerhillcommercial.com

952-475-5121

Summerhill Commercial Real Estate

6495 City West Parkway

Eden Prairie, MN 55344

www.summerhillcommercial.com

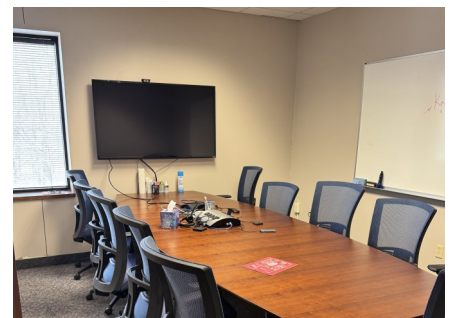
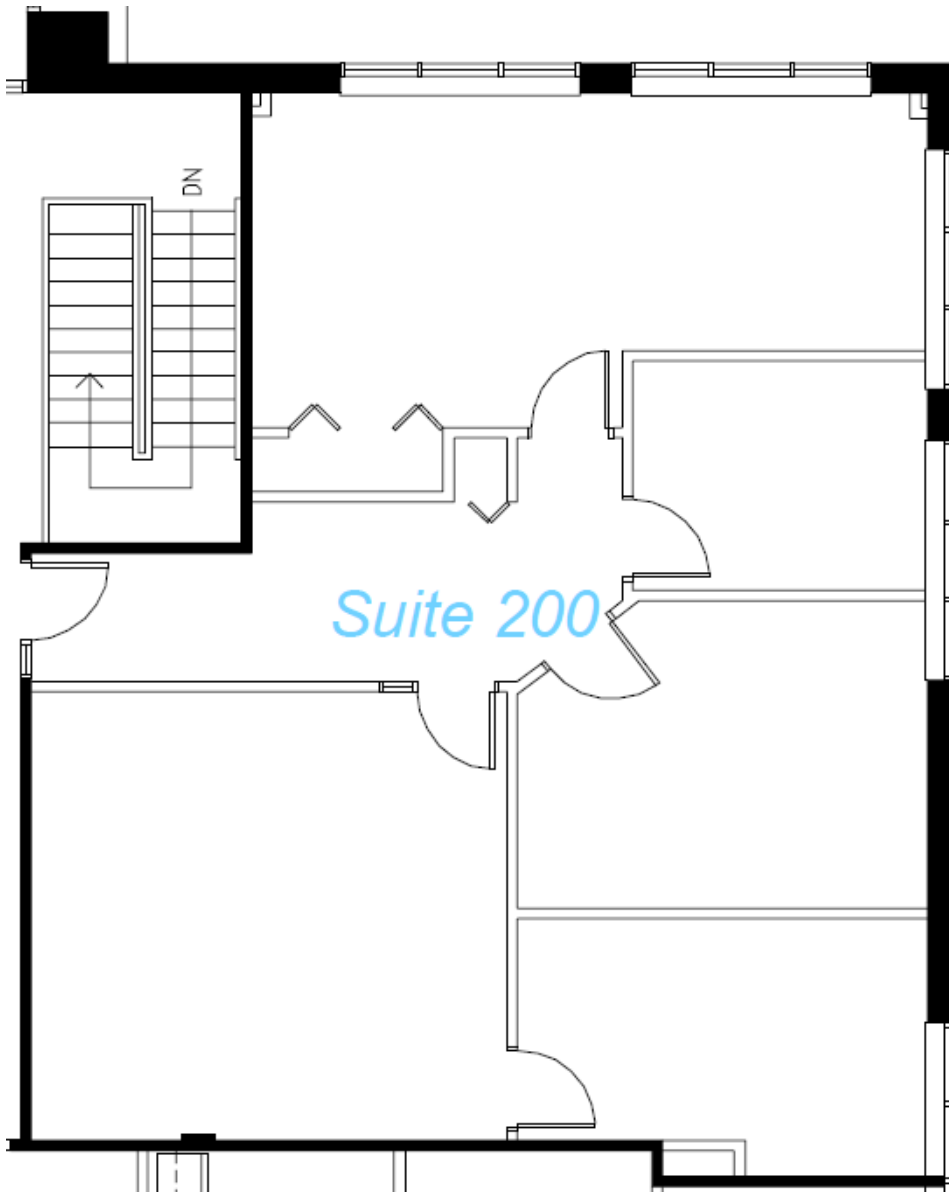
FOR LEASE OFFICE

7700 Equitable Drive, Suite 200
Eden Prairie, MN 55344



SUMMERHILL
Commercial Real Estate, LLC

AVAILABLE SUITE



CONTACT:

Patrick Lensing, CPM

plensing@summerhillcommercial.com

952-475-5121

Summerhill Commercial Real Estate

6495 City West Parkway

Eden Prairie, MN 55344

www.summerhillcommercial.com