



635 Kingsbridge Road

Carrollton | Georgia 30117 | W Carroll County

INDUSTRIAL WAREHOUSE AVAILABLE

SPACE AVAILABLE

26,012 SF on 16.5 ACRES

LEASING RATE

\$7.50/PSF

LAWSON HULL
770.913.3989 | lhull@ackermanco.net

THOMAS ALLEN FARR JR.
770.913.3965 | afarr@ackermanco.net

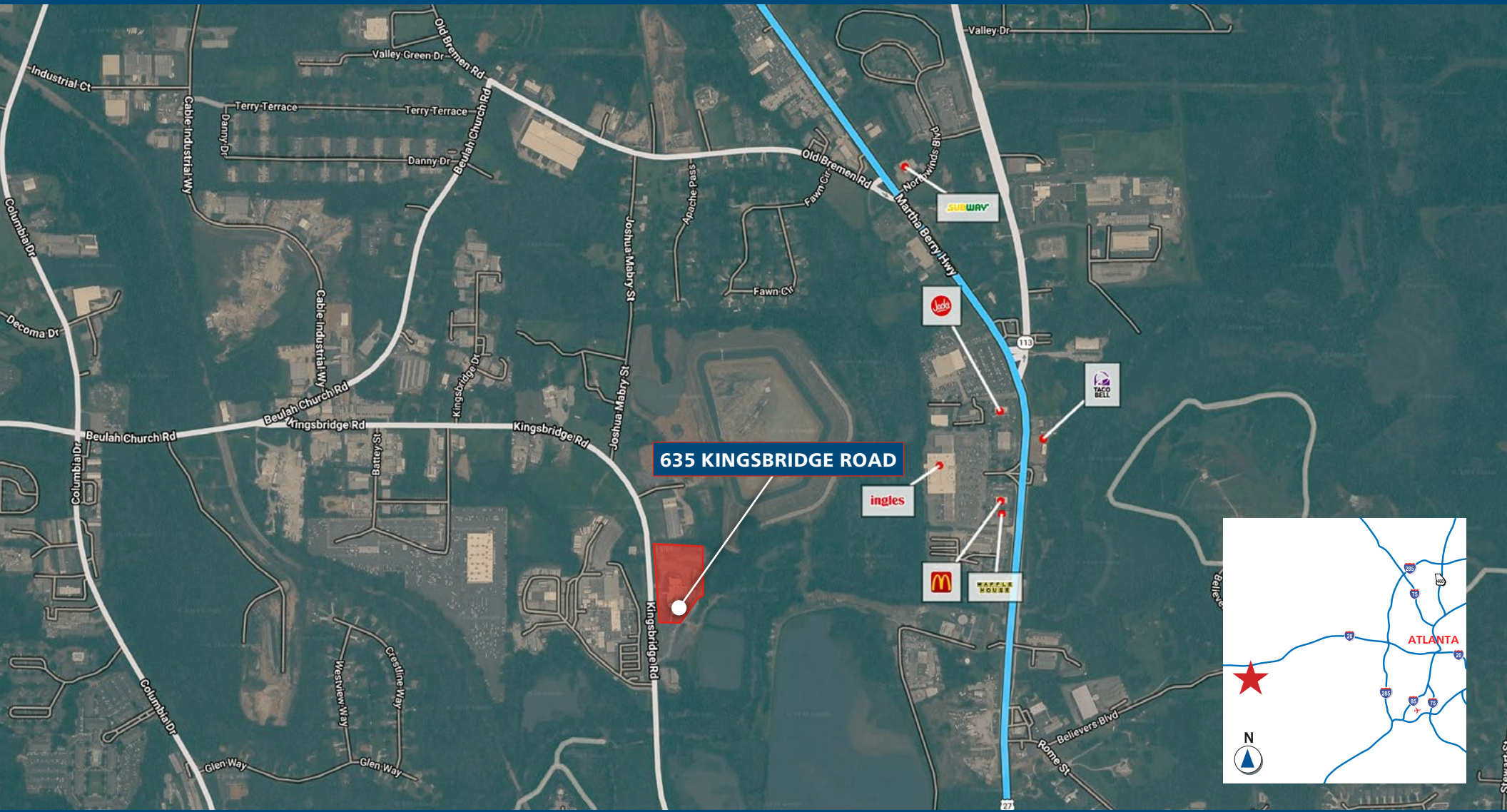
HIGHLIGHTS

- 26,012 SF industrial facility on 16.5 acres
- 20' clear ceiling height
- 8 dock high doors
- 2 drive-in doors
- Dedicated wash bay
- Freight elevator access
- Flexible layout for manufacturing, distribution, logistics, or warehousing
- Ample outdoor space for storage, parking, or expansion
- Strategically located in the growing City of Carrollton
- Convenient access to major transportation corridors

Industrial Warehouse Facility

For Lease – 26,012 SF | 16.5 Acres

635 Kingsbridge Road
Carrollton, Georgia 30117
W Carroll County



635 KINGSBRIDGE ROAD

Ackerman & Co.

LAWSON HULL
770.913.3989 | lhull@ackermanco.net

THOMAS ALLEN FARR JR.
770.913.3965 | afarr@ackermanco.net

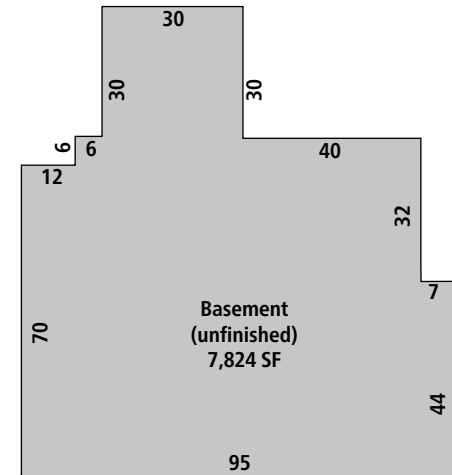
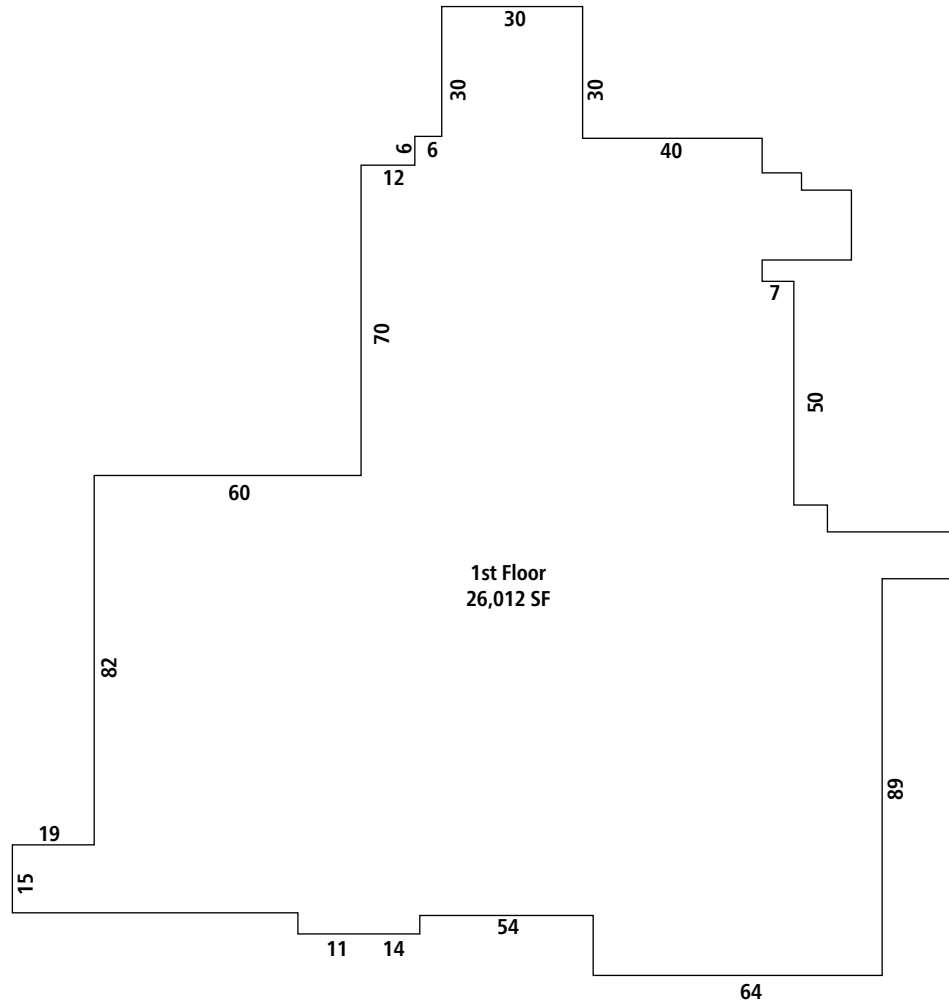
©2026 Ackerman & Co. All rights reserved. While we have no reason to doubt the accuracy of the information provided from sources we deem reliable, we cannot guarantee it and therefore assume no liability for errors, omissions or changes to this content.

Industrial Warehouse Facility

For Lease – 26,012 SF | 16.5 Acres

635 Kingsbridge Road
Carrollton, Georgia 30117
W Carroll County

FLOOR PLAN



Industrial Warehouse Facility

For Lease – 26,012 SF | 16.5 Acres

635 Kingsbridge Road
Carrollton, Georgia 30117
W Carroll County

PROPERTY PHOTOS



LAWSON HULL
770.913.3989 | lhull@ackermanco.net

THOMAS ALLEN FARR JR.
770.913.3965 | afarr@ackermanco.net

Ackerman & Co.

©2026 Ackerman & Co. All rights reserved. While we have no reason to doubt the accuracy of the information provided from sources we deem reliable, we cannot guarantee it and therefore assume no liability for errors, omissions or changes to this content.

Industrial Warehouse Facility

For Lease – 26,012 SF | 16.5 Acres

635 Kingsbridge Road
Carrollton, Georgia 30117
W Carroll County

PROPERTY PHOTOS



LAWSON HULL
770.913.3989 | lhull@ackermanco.net

THOMAS ALLEN FARR JR.
770.913.3965 | afarr@ackermanco.net

Ackerman & Co.

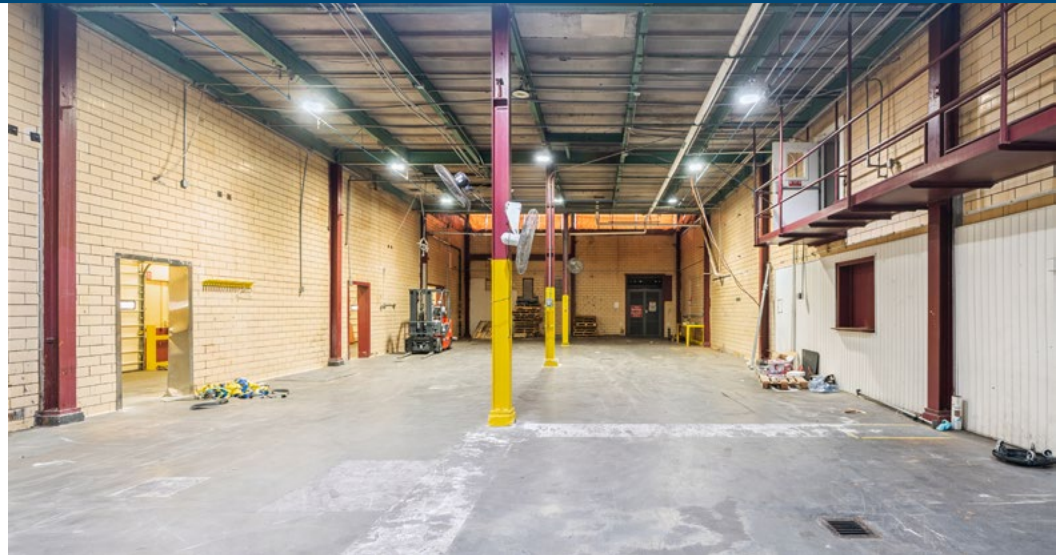
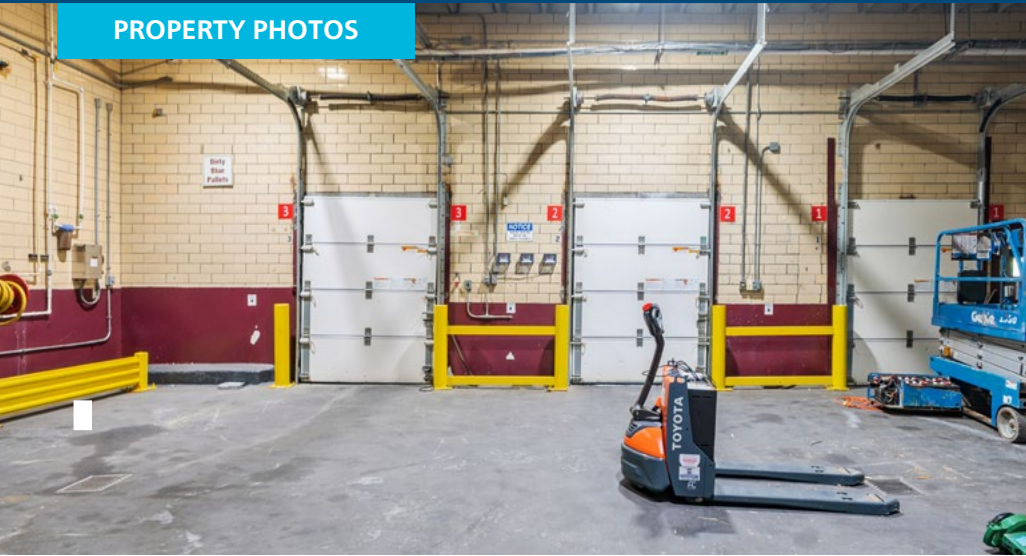
©2026 Ackerman & Co. All rights reserved. While we have no reason to doubt the accuracy of the information provided from sources we deem reliable, we cannot guarantee it and therefore assume no liability for errors, omissions or changes to this content.

Industrial Warehouse Facility

For Lease – 26,012 SF | 16.5 Acres

635 Kingsbridge Road
Carrollton, Georgia 30117
W Carroll County

PROPERTY PHOTOS



LAWSON HULL
770.913.3989 | lhull@ackermanco.net

THOMAS ALLEN FARR JR.
770.913.3965 | afarr@ackermanco.net

Ackerman & Co.

©2026 Ackerman & Co. All rights reserved. While we have no reason to doubt the accuracy of the information provided from sources we deem reliable, we cannot guarantee it and therefore assume no liability for errors, omissions or changes to this content.