



# WAREHOUSE FOR SALE

1975 S Market Blvd.  
Chehalis, WA 98532

\$699,000



**Chris Roewe**  
*Owner/ Broker*  
C. 360.556.5101  
chris@woodfordcre.com

**Lindsay Johnson**  
*Licensed Assistant*  
360.501.5500  
lindsay@woodfordcre.com

[www.woodfordcre.com](http://www.woodfordcre.com)



# PROPERTY FEATURES

**SALE PRICE** \$699,000

**TOTAL BUILDING SF** 14,225 SF+/-

**WAREHOUSE**

Shop/Storage: 7,954SF+/-  
Shop/Storage: 4,867 SF+/-  
Shop/Storage: 1,404 SF+/-

**LAND SF**

1.5 Acres | 65,340 SF

**GRADE DOORS**

Shop/Storage: 2 12x14 OHD  
Shop/Storage 1: 2 Sliding Doors  
8 Swinging Doors  
Shop/Storage 2: 2 10x10 OHD  
1 10x8 OHD

**POWER**

Standard

**PARCELS**

005604053026

**ZONING**

CG – Commercial General

**BUILDING INFO**

Floor: Open to Foundation  
Roof: Metal Roof on Wood Truss  
Exterior: Mix; wood, metal,  
concrete, fiber glass.

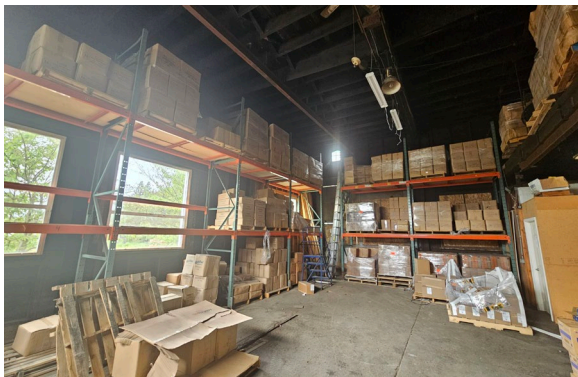
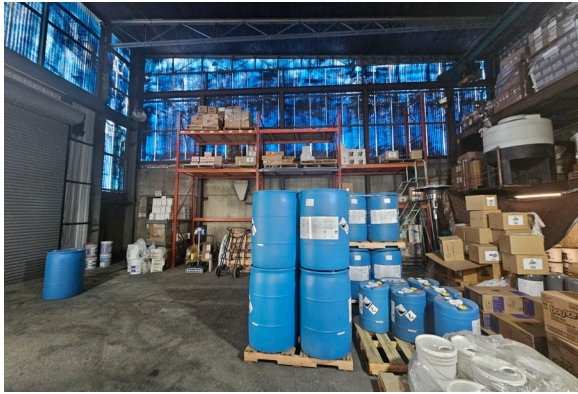
**BUILT**

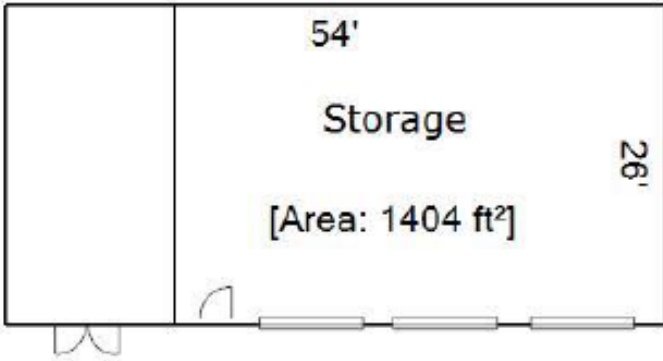
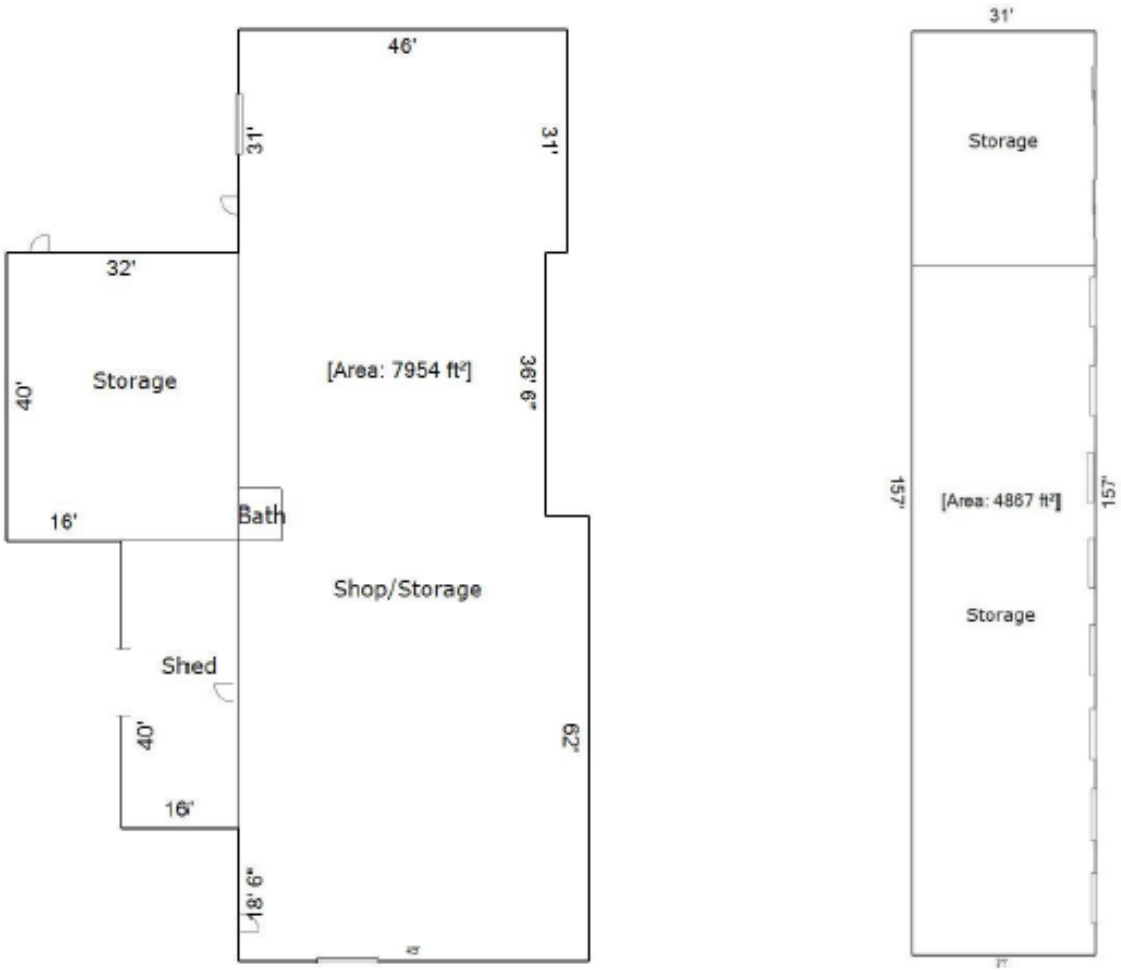
1955-1979




## ABOUT THE PROPERTY


Great value in this versatile three-building warehouse package in Chehalis, WA, excellent potential for owner-users, investors, or value-add operators. Situated on 1.5 acres and zoned General Commercial, the property includes a total of 14,225 SF of warehouse and storage facilities designed to accommodate a wide range of business operations. The main 7,954 SF shop/storage building features two oversized 12'x14' grade-level doors for convenient access and functionality, while the 4,867 SF Shop/Storage building offers multiple access points with two sliding doors and eight swinging shed doors. An additional 1,404 SF Shop/Storage building includes two 10'x10' grade-level doors and one 10'x8' door, adding even more operational flexibility. With an abundance of yard space, flexible functionality, and standard power service suitable for a variety of commercial uses, this package presents a strong opportunity to add value through repairs, improvements, or repositioning. Contact us today to schedule a private tour or request additional information.









 [woodfordcre.com](http://woodfordcre.com)

 [chris@woodfordcre.com](mailto:chris@woodfordcre.com)

 (P)360.501.5500

 208 Vine St., Kelso, WA 98626

The information contained herein has been obtained from sources we understand to be reliable. Whilst we do not doubt its accuracy it has not been verified & we make no guarantees, warranty or representations about it. Any projections, opinions, assumptions or estimates used are for example only. You & your advisors should conduct a careful independent investigation of the property to determine the property's satisfaction to your needs.

© Woodford Commercial Real Estate.