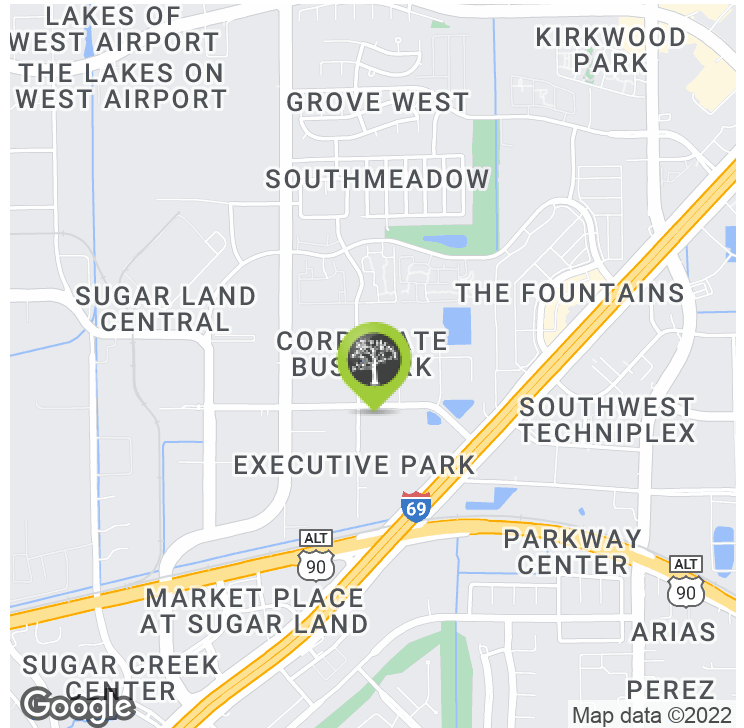


FOR LEASE | OFFICE | 10707 CORPORATE DRIVE



LAND PARK
COMMERCIAL



PROPERTY DESCRIPTION

Located in Flourishing Sugar Land Area - Corporate Park Churchill is a two-story multi-tenant office building containing approximately 75,490 square feet of net rentable area. On-site amenities include a snack room, conference room facility, card-key access, impressive entries, on-site management and leasing office.

PROPERTY HIGHLIGHTS

- Impressive Entries
- Temperature-controlled Atriums
- Extensively Landscaped Atriums, Grounds & Parking Area
- Immediate Access to 59 & Ten Minutes from Westchase
- Conference Room Facility
- Above Standard Finishes
- Surface Parking & Covered Reserved Spaces
- Card-Key Access

MATT EASTERLING
713.325.4112
measterling@landparkco.com

BILL MCGRATH, CCIM
281.598.9860
bmcgrath@landparkco.com

FOR LEASE | OFFICE | 10707 CORPORATE DRIVE



LANDPARK
COMMERCIAL

LEASE TYPE | Full Service

TOTAL SPACE | 16,049 SF

LEASE TERM | Negotiable

LEASE RATE | \$19.50 SF/yr



SUITE	TENANT	SIZE (SF)	LEASE TYPE	LEASE RATE
Suite 250	Available	16,049 SF	Full Service	\$19.50 SF/yr

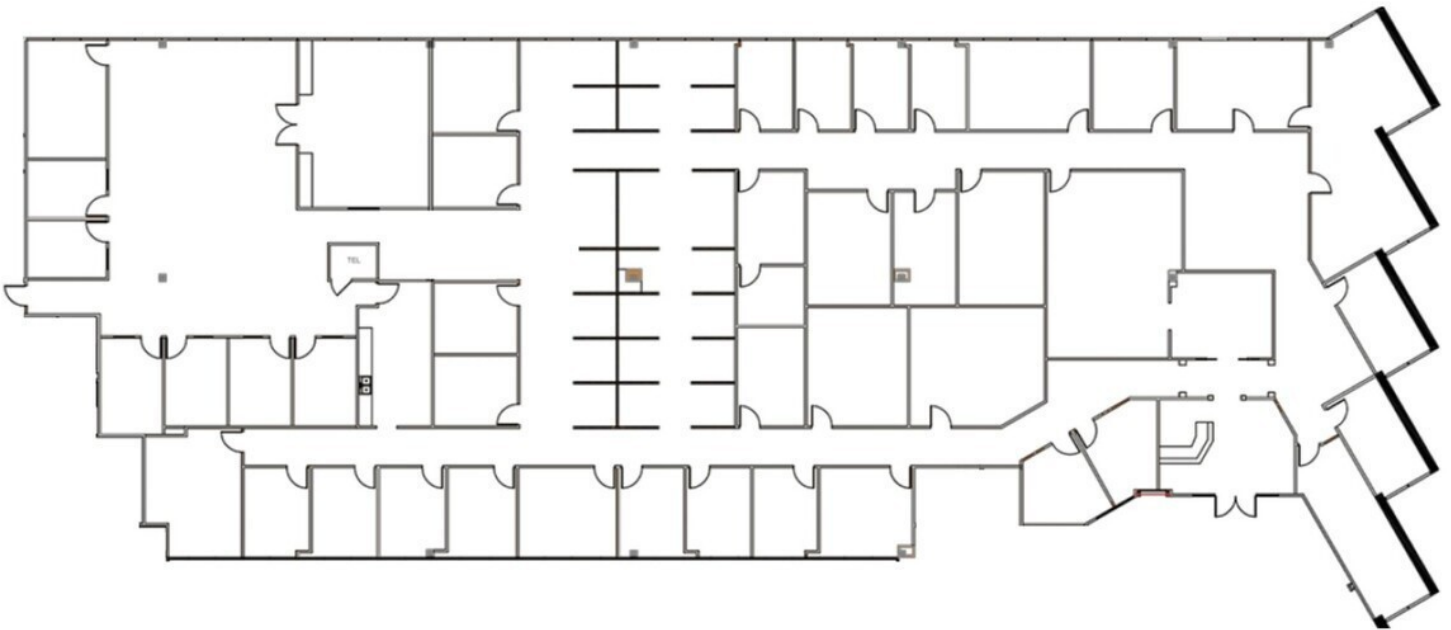
MATT EASTERLING
713.325.4112
measterling@landparkco.com

BILL MCGRATH, CCIM
281.598.9860
bmcgrath@landparkco.com

FOR LEASE | OFFICE | 10707 CORPORATE DRIVE



LANDPARK
COMMERCIAL



1 SUITE 250
16,049 Square Feet

(NOT TO SCALE)

MATT EASTERLING
713.325.4112
measterling@landparkco.com

BILL MCGRATH, CCIM
281.598.9860
bmcgrath@landparkco.com