

24725 GREENFIELD ROAD
SOUTHFIELD, MICHIGAN

OFFICE/MEDICAL FOR SALE OR LEASE
4,836 Square Feet Available



**SIGNATURE
ASSOCIATES**
KNOW SIGNATURE | KNOW RESULTS

RECENTLY RENOVATED



PROPERTY FEATURES

- 4,836 square feet available
- Recently renovated freestanding office/medical building, outstanding visibility along Greenfield Road
- Strategically located in the heart of Southfield with immediate access to major regional freeways, and just 1.5 miles from Henry Ford Providence Southfield Hospital
- The building features modernized common areas, updated finishes, and a versatile layout
- Ample on-site parking and strong frontage provide both convenience and visibility
- Opportunity for an owner-occupant, a medical practice looking to establish or expand its presence near a major hospital system, or an investor
- Lease Rate: \$20.00/sq. ft. G + U
- Sale Price: \$795,000 (\$164.39/sq. ft.)



For more information, please contact:

STEVE GORDON
(248) 948 0101
sgordon@signatureassociates.com

JEFF HIGGINS
(248) 359 0650
jhiggins@signatureassociates.com

SIGNATURE ASSOCIATES
One Towne Square, Suite 1200
Southfield, MI 48076
www.signatureassociates.com

24725 Greenfield Road – Southfield, Michigan

Office For Sale or Lease

4,836
Square Feet
AVAILABLE



For more information, please contact:

STEVE GORDON
(248) 948 0101
sgordon@signatureassociates.com

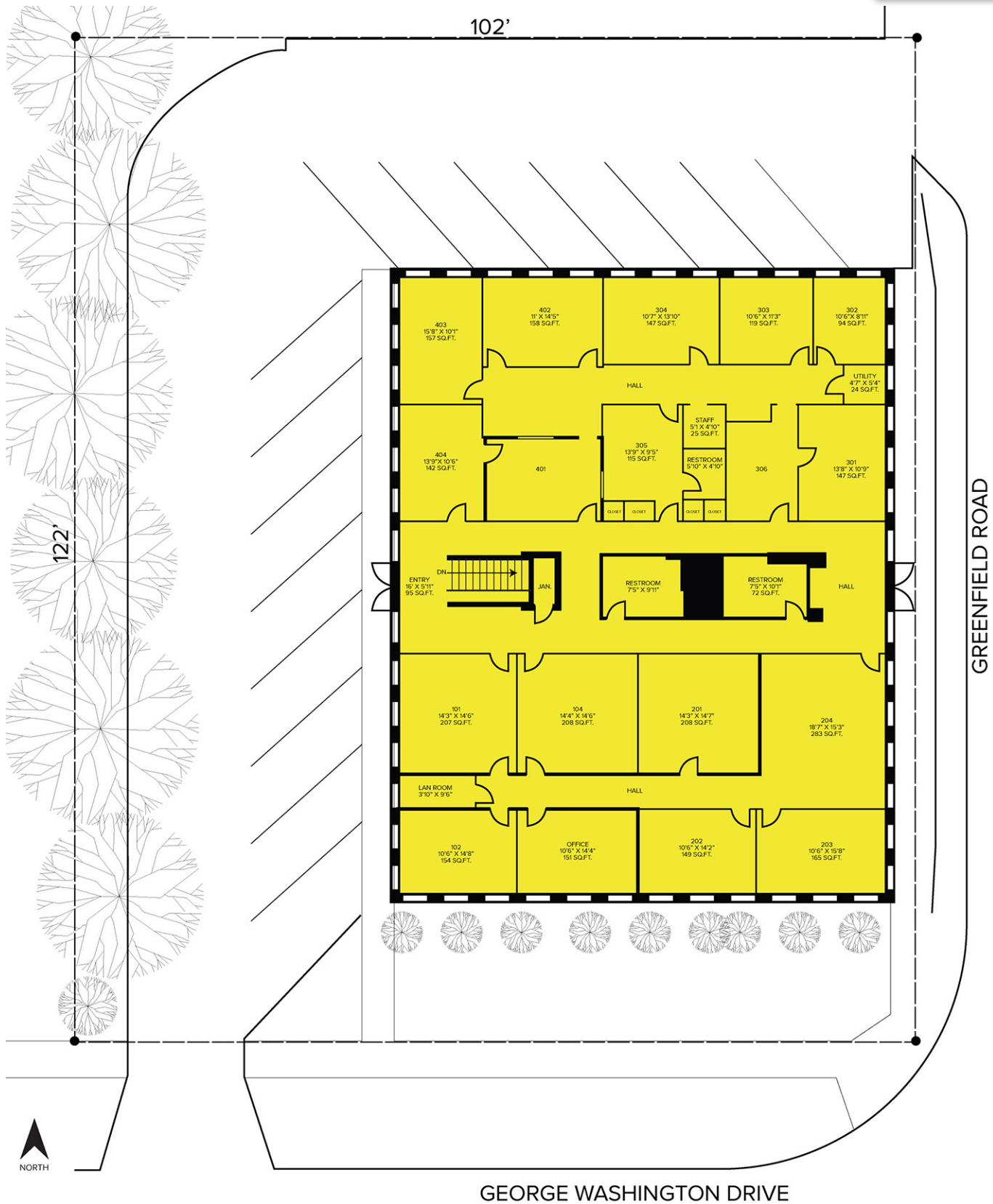
JEFF HIGGINS
(248) 359 0650
jhiggins@signatureassociates.com

SIGNATURE ASSOCIATES
One Towne Square, Suite 1200
Southfield, MI 48076
www.signatureassociates.com

24725 Greenfield Road – Southfield, Michigan

Office For Sale or Lease

4,836
Square Feet
AVAILABLE



For more information, please contact:

STEVE GORDON

(248) 948 0101

sgordon@signatureassociates.com

JEFF HIGGINS

(248) 359 0650

jhiggins@signatureassociates.com

SIGNATURE ASSOCIATES

One Towne Square, Suite 1200

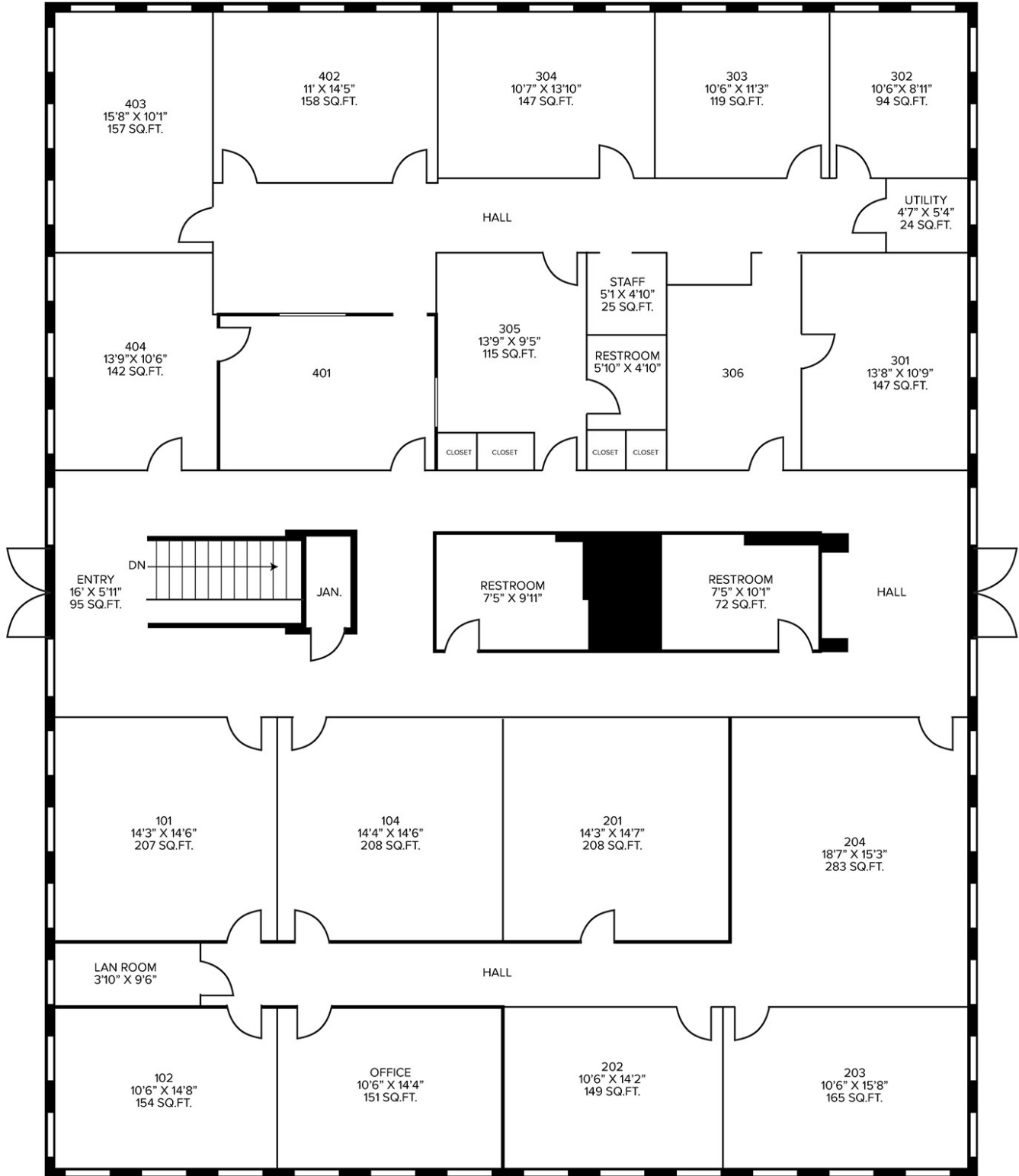
Southfield, MI 48076

www.signatureassociates.com

24725 Greenfield Road – Southfield, Michigan

Office For Sale or Lease

4,836
Square Feet
AVAILABLE



For more information, please contact:

STEVE GORDON
(248) 948 0101
sgordon@signatureassociates.com

JEFF HIGGINS
(248) 359 0650
jhiggins@signatureassociates.com

SIGNATURE ASSOCIATES
One Towne Square, Suite 1200
Southfield, MI 48076
www.signatureassociates.com

24725 Greenfield Road – Southfield, Michigan
Office For Sale or Lease

4,836
Square Feet
AVAILABLE



For more information, please contact:

STEVE GORDON
(248) 948 0101
sgordon@signatureassociates.com

JEFF HIGGINS
(248) 359 0650
jhiggins@signatureassociates.com

SIGNATURE ASSOCIATES
One Towne Square, Suite 1200
Southfield, MI 48076
www.signatureassociates.com