



The Iconic Judge Building

8 E. Broadway | Salt Lake City, UT 84111

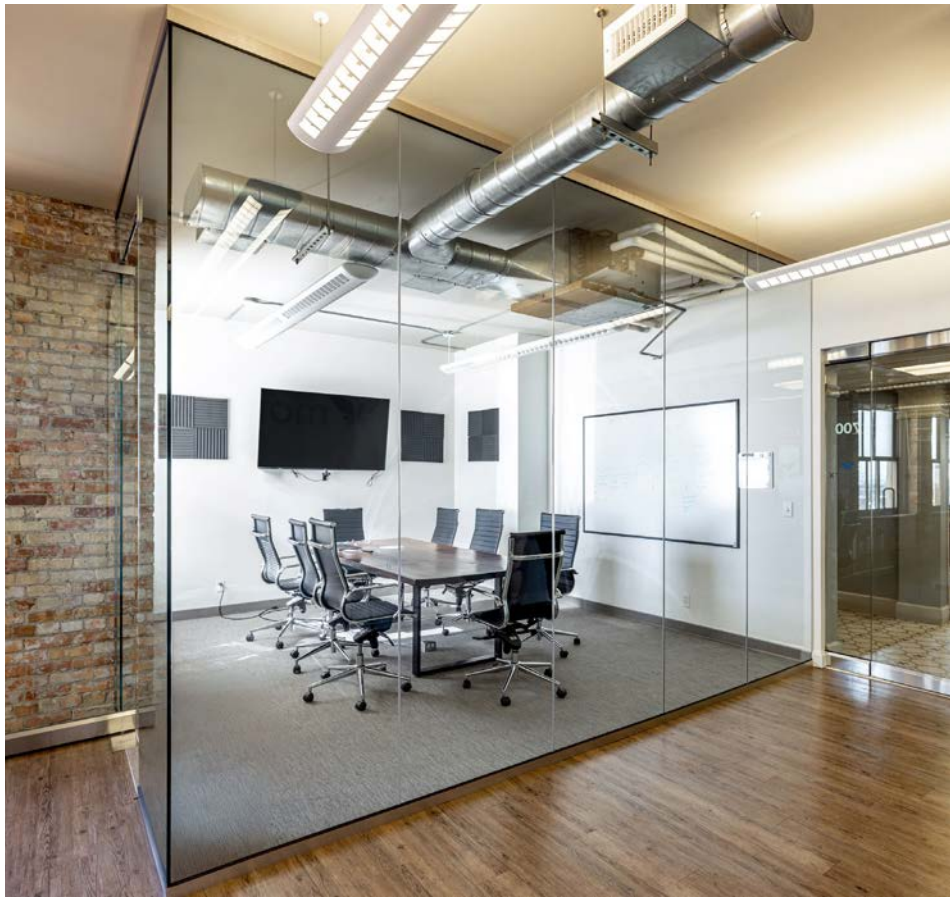


Colliers
111 S. Main St. | Suite 2200
Salt Lake City, UT 84111
Main: +1 801 947 8300
colliers.com

Presented By:
Derek Sawaya
Associate Vice President
+1 801 947 8341
derek.sawaya@colliers.com

Property Highlights

- 186 - 11,379 SF Available
- \$24.50 PSF FS *subject to terms of final lease agreement*
- 200 feet from Trax lightrail
- Quick access to parking and numerous amenities
- Located in the heart of Downtown SLC





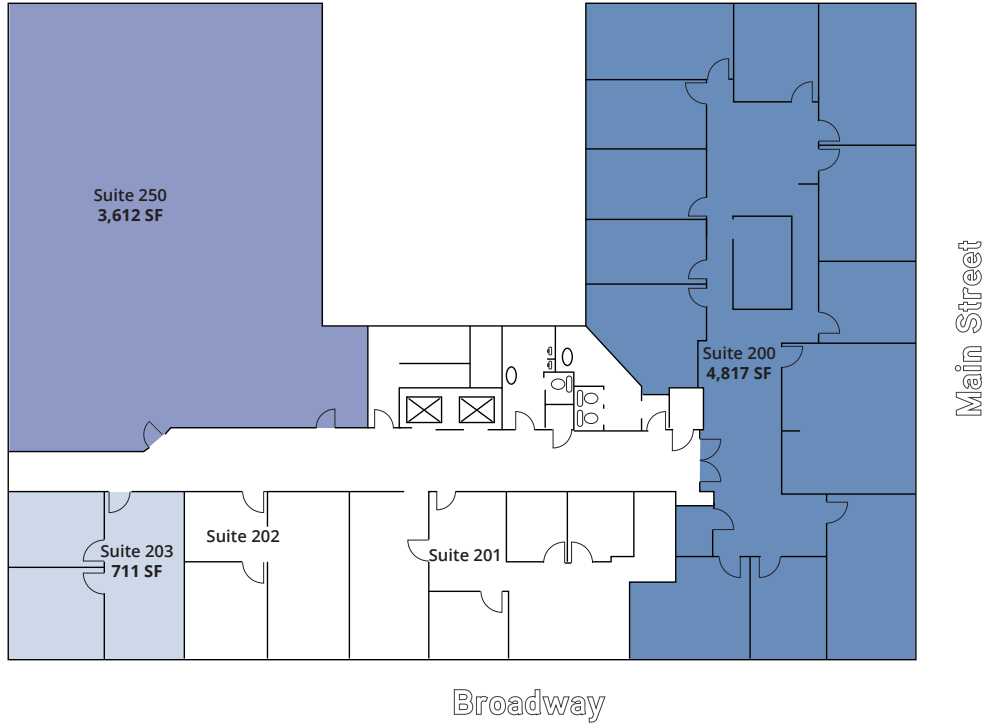
Colliers

Plug & Play Suite Available

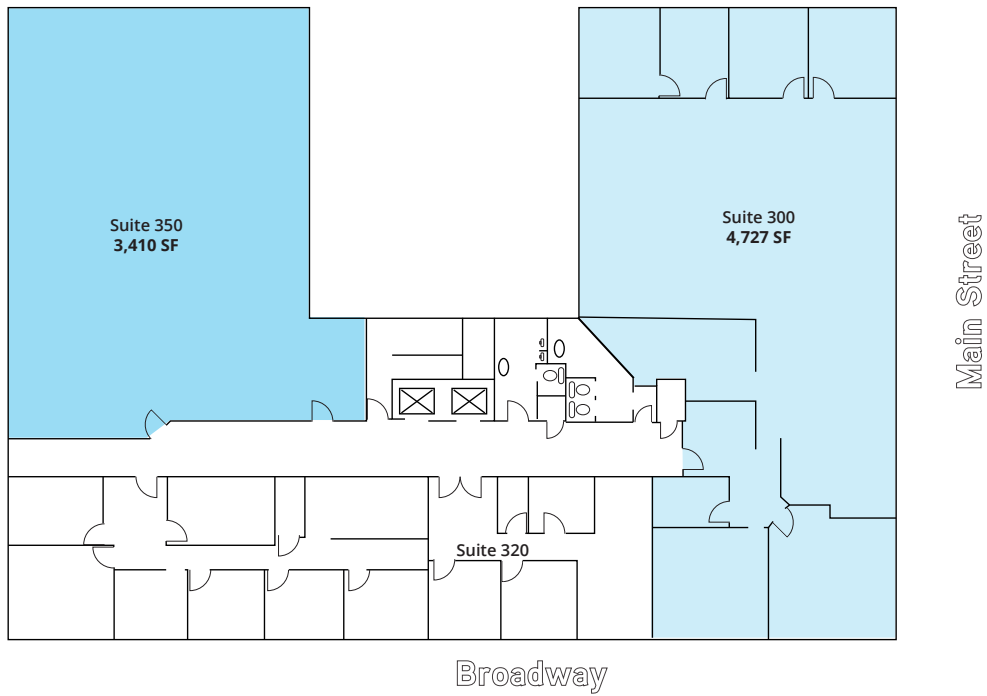


Availabilities

Level 2



Level 3



Available Suites

200
4,817 SF



203
711 SF



250
3,612 SF



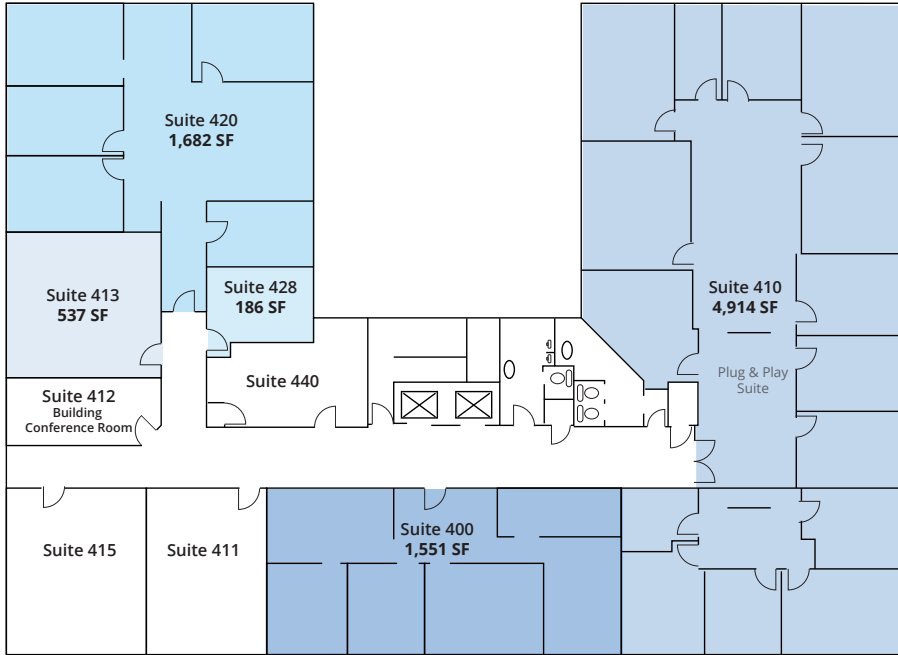
300
4,727 SF



350
3,410 SF



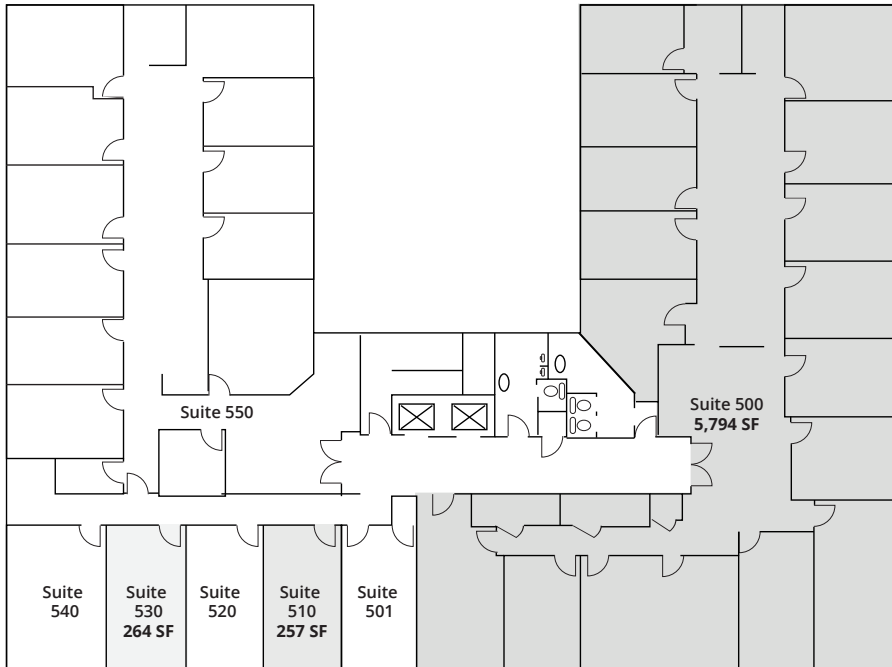
Level 4



Broadway

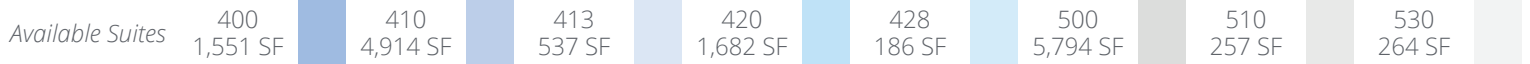
Main Street

Level 5

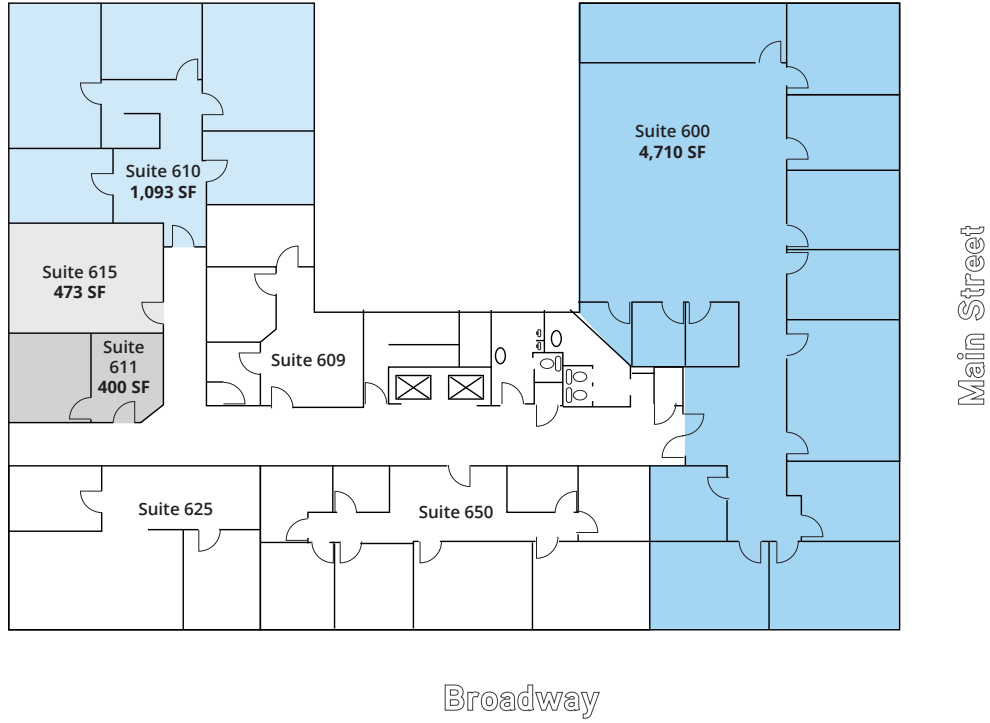


Broadway

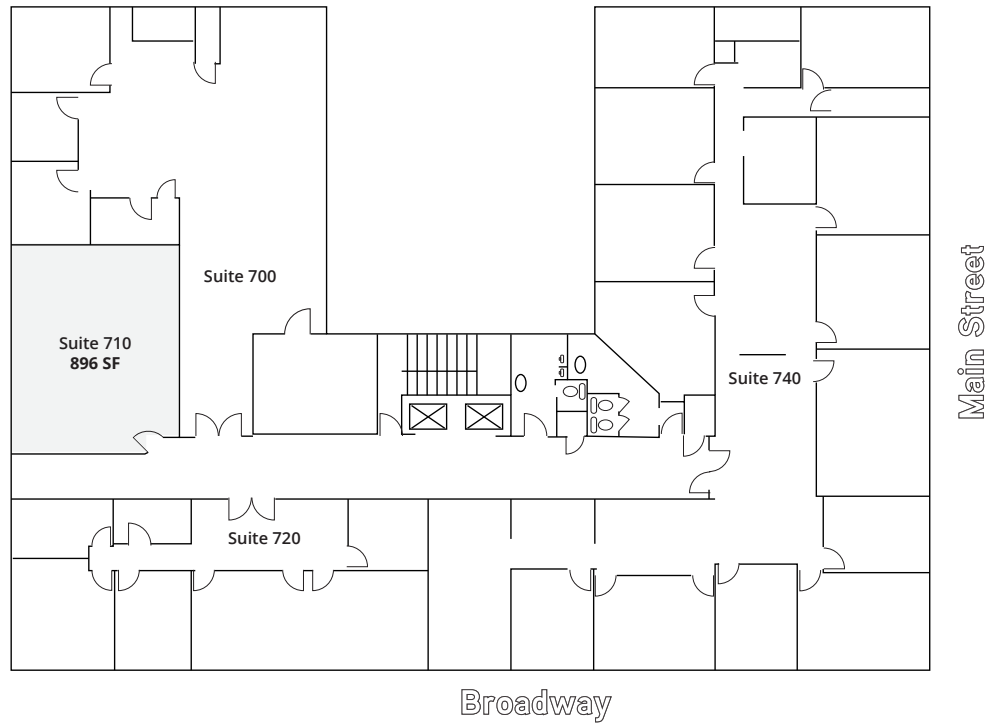
Main Street



Level 6



Level 7





Scan for
360° View



Select Retail Amenities



Derek Sawaya
 Associate Vice President
 +1 801 947 8341
 derek.sawaya@colliers.com

Colliers
 111 S. Main St. | Suite 2200
 Salt Lake City, UT 84111
 Main: +1 801 947 8300
 colliers.com



This document has been prepared by Colliers International for advertising and general information only. Colliers International makes no guarantees, representations or warranties of any kind, expressed or implied, regarding the information including, but not limited to, warranties of content, accuracy and reliability. Any interested party should undertake their own inquiries as to the accuracy of the information. Colliers International excludes unequivocally all inferred or implied terms, conditions and warranties arising out of this document and excludes all liability for loss and damages arising there from. This publication is the copyrighted property of Colliers International and/or its licensor(s). ©2025. All rights reserved.