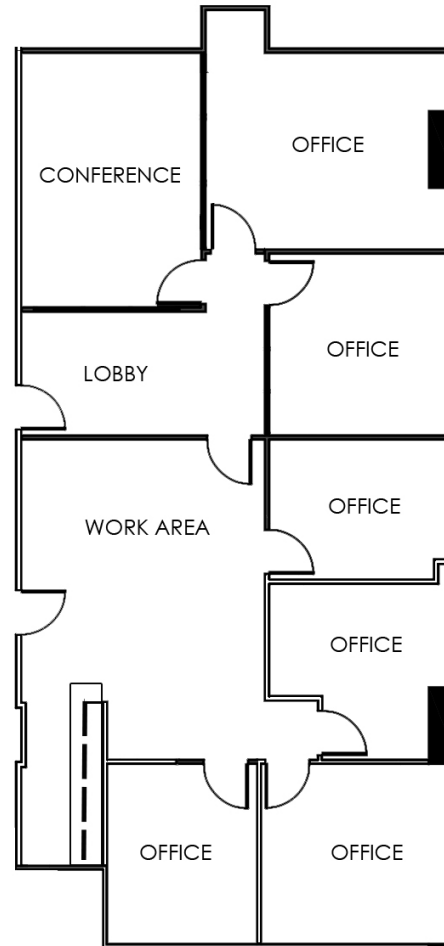


FOR LEASE | OFFICE | 10701 COPORATE PARK DRIVE



SUITE 310  
2,103 Square Feet

MATT EASTERLING  
713.325.4112  
measterling@landparkco.com

5858 Westheimer Rd. Suite 100 | Houston, TX 77057  
713-789-2200 | LandParkCo.com

The information contained herein is believed to be correct. However, no warranty or representation is made. All prices are subject to change without notice and property is subject to prior lease, sale or withdrawal from the market without notice.