



St. Francis Office Suites

2013 Devonshire Drive, Columbus, Georgia 31904

Property Overview

Newly renovated executive office suites located in North Columbus, just one block from Manchester Expressway & St. Francis Emory Hospital.

Smart Thermostats, New HVAC, New LVP floor & carpet, as well as fresh paint and LED lights throughout. Power, Water, Wifi, and All Maintenance Included.

Professionally Managed, Secured Key Fob Access and 24-Hour Video surveillance. Rental amount subject to change without notice. Professional office leases only; no salons to include hair, nails, aesthetics etc. Contact Broker for more details.

Offering Summary

Lease Rate:	\$1,500.00 /mo
Lease Type:	Utilities Included
Building Size:	9,141 SF
Available SF:	675 SF

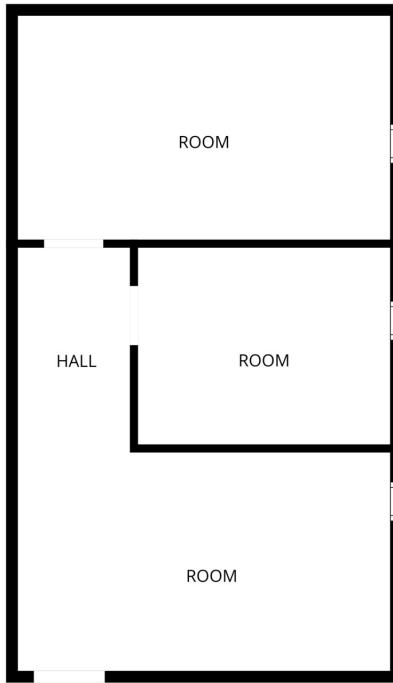
Demographics	1 Mile	3 Miles	5 Miles
Total Households	3,683	26,666	59,064
Total Population	8,351	61,550	140,548
Average HH Income	\$45,715	\$55,935	\$52,209

For More Information

Amy D. Gill, MICP, MRP

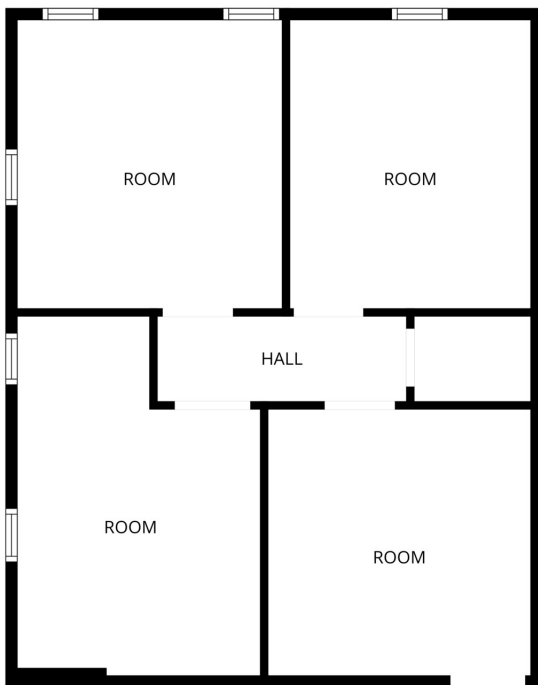
O: 706 660 5418 x1009 | C: 706 562 3616
agill@g2cre.com | GA #381793





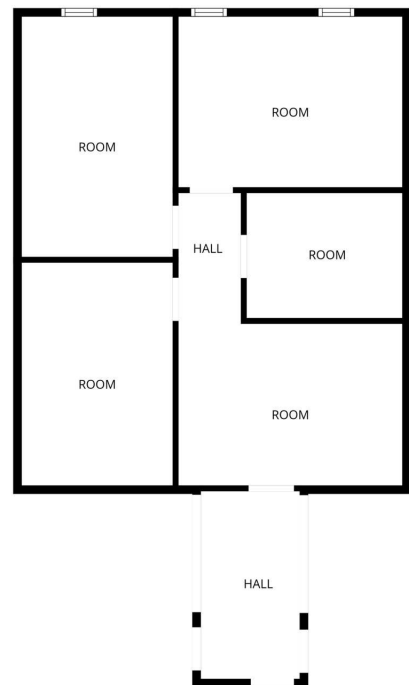
Suite 1350

FLOOR PLAN CREATED BY COMPUCA APP. MEASUREMENTS OBTAINED VISUALLY. SQUARE FOOTAGE NOT QUANTIFIED.



Suite 1500

FLOOR PLAN CREATED BY COMPUCA APP. MEASUREMENTS OBTAINED VISUALLY. SQUARE FOOTAGE NOT QUANTIFIED.



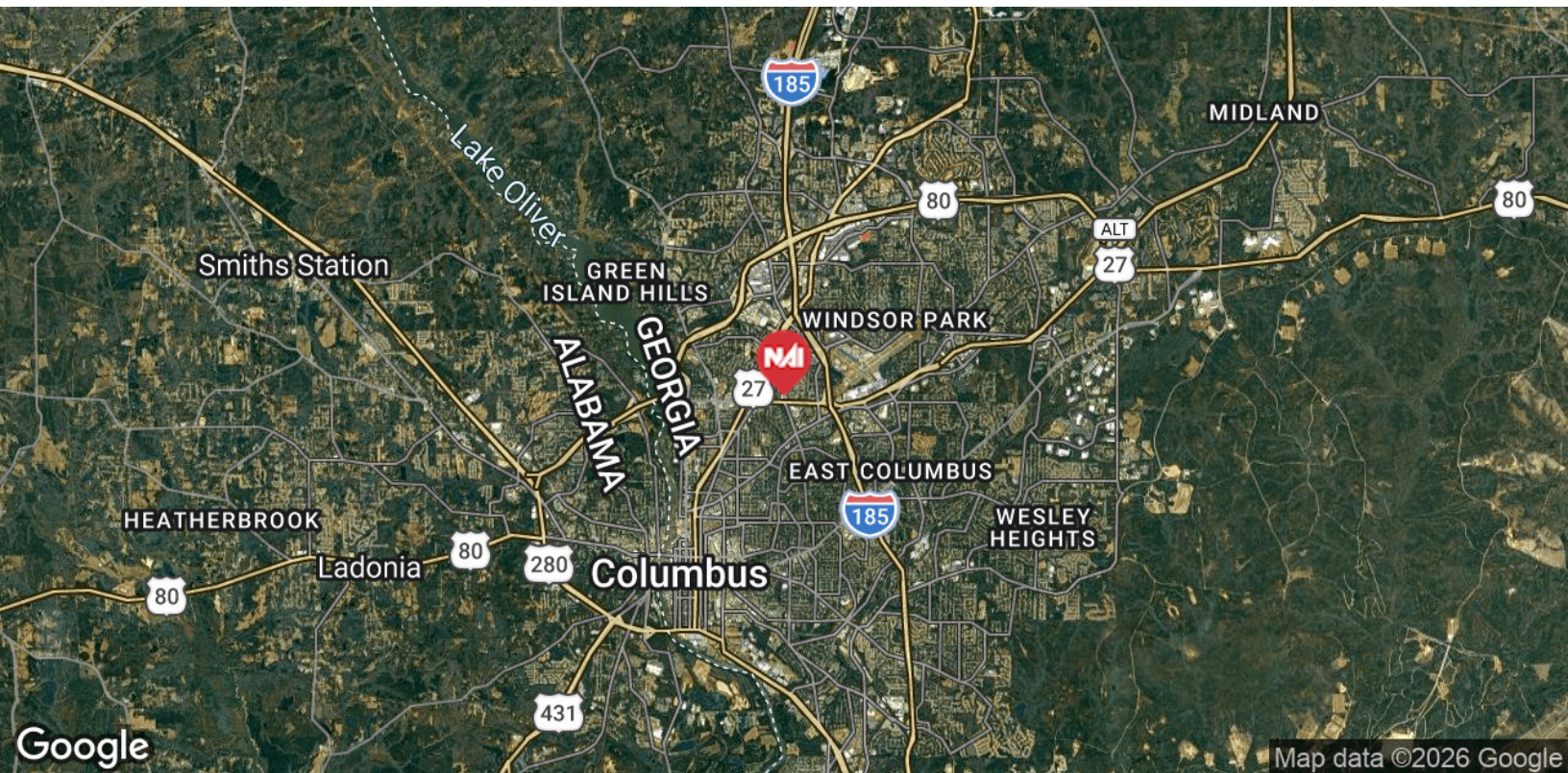
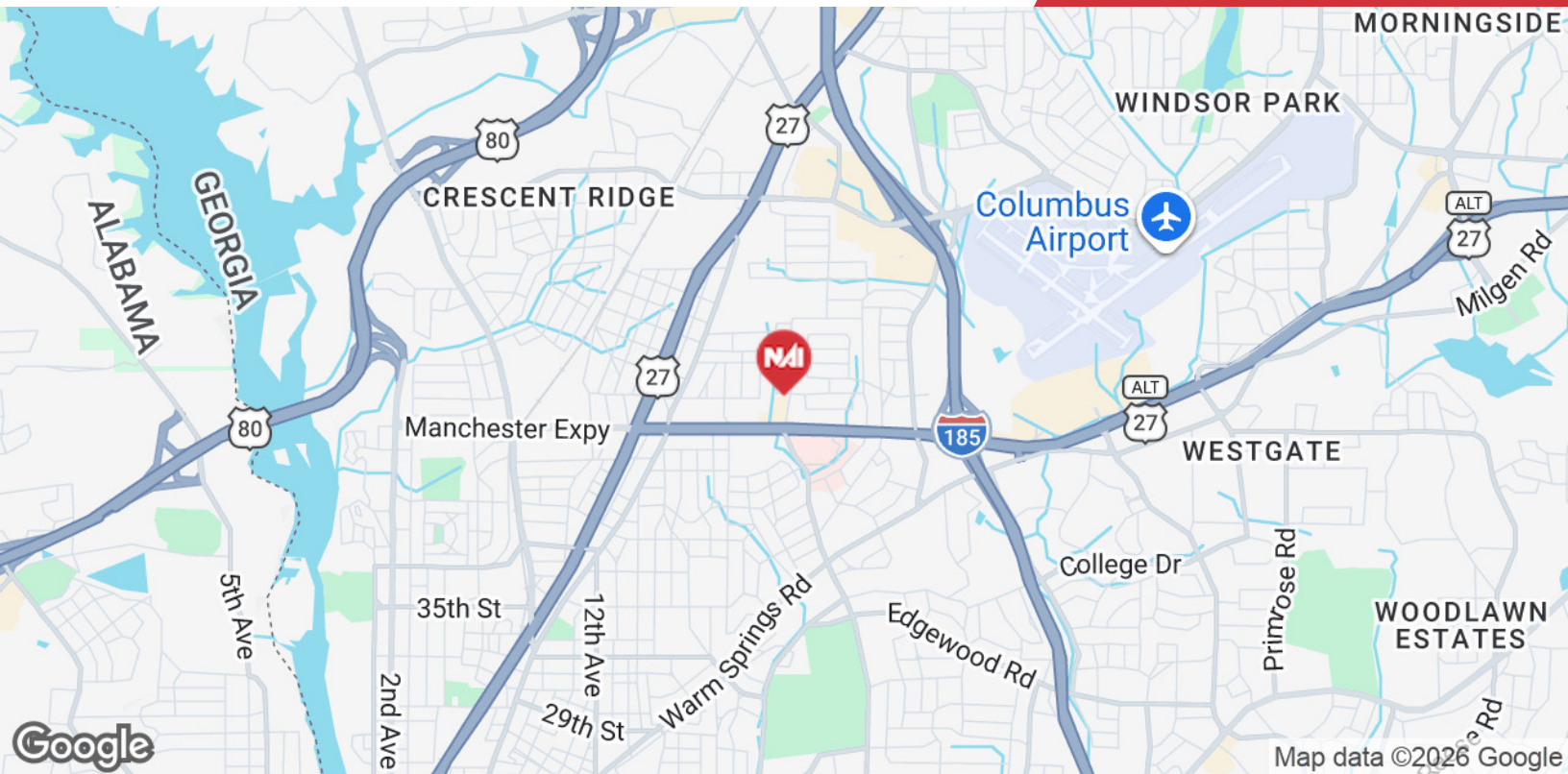
Suite 1700

FLOOR PLAN CREATED BY COMPUCA APP. MEASUREMENTS OBTAINED VISUALLY. SQUARE FOOTAGE NOT QUANTIFIED.



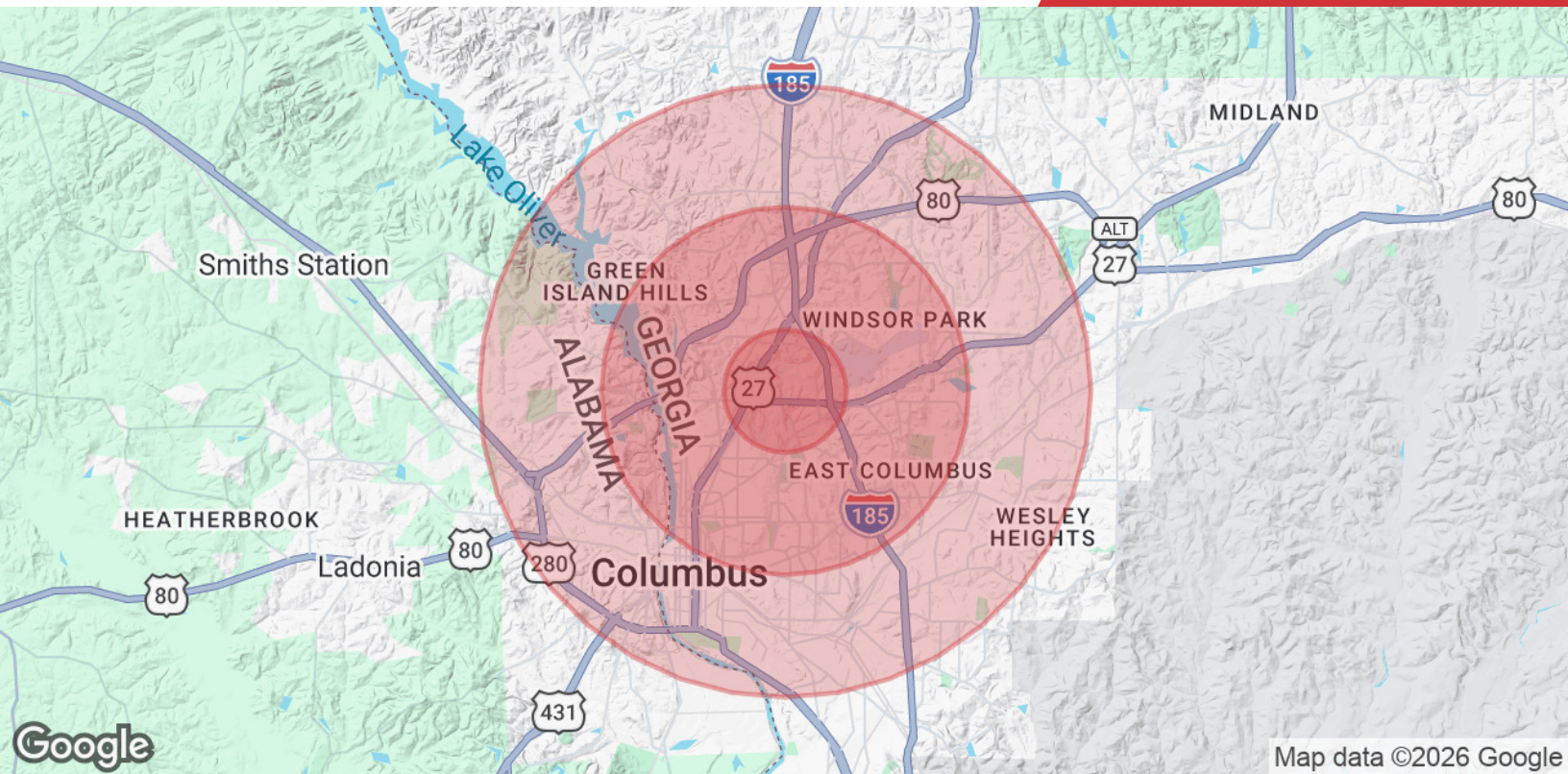
Map data ©2026 Google Imagery ©2026 Airbus, Maxar Technologies, U.S. Geological Survey

We obtained the information above from sources we believe to be reliable. However, we have not verified its accuracy and make no guarantee, warranty or representation about it. It is submitted subject to the possibility of errors, omissions, change of price, rental or other conditions, prior sale, lease or financing, or withdrawal without notice. We include projections, opinions, assumptions or estimates for example only, and they may not represent current or future performance of the property. You and your tax and legal advisors should conduct your own investigation of the property and transaction.



We obtained the information above from sources we believe to be reliable. However, we have not verified its accuracy and make no guarantee, warranty or representation about it. It is submitted subject to the possibility of errors, omissions, change of price, rental or other conditions, prior sale, lease or financing, or withdrawal without notice. We include projections, opinions, assumptions or estimates for example only, and they may not represent current or future performance of the property. You and your tax and legal advisors should conduct your own investigation of the property and transaction.

Post Office Box 4529
Columbus, GA 31904
706 660 5418 tel
G2cre.com



Population

	1 Mile	3 Miles	5 Miles
Total Population	8,351	61,550	140,548
Average Age	40.2	36.9	36.1
Average Age (Male)	37.0	35.8	34.5
Average Age (Female)	41.8	37.6	37.3

Households & Income

	1 Mile	3 Miles	5 Miles
Total Households	3,683	26,666	59,064
# of Persons per HH	2.3	2.3	2.4
Average HH Income	\$45,715	\$55,935	\$52,209
Average House Value	\$128,854	\$170,306	\$151,829

* Demographic data derived from 2020 ACS - US Census

Owner Disclosure Notice

Member(s) of the property ownership are licensed real estate professionals in the State of Georgia, and hold an ownership interest in the property being advertised.