

For Lease | 205 SE Grand Ave | Portland, OR



Property Summary

- 1,158 Square Feet
- Two private offices
- Second floor office with secure access
- Shared conference room and kitchenette

Asking Rent

**\$1,930/mo. + NNN
(\$20/sf/yr.)**



WRIGHT COMMERCIAL
REAL ESTATE SERVICES

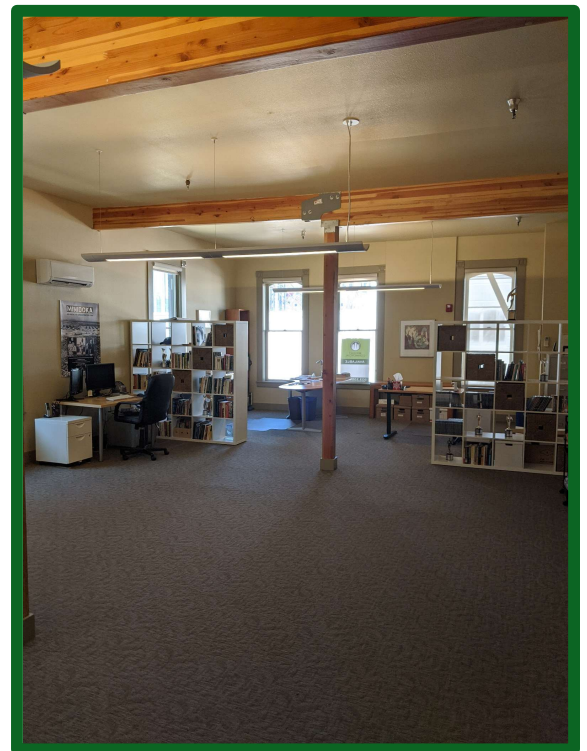
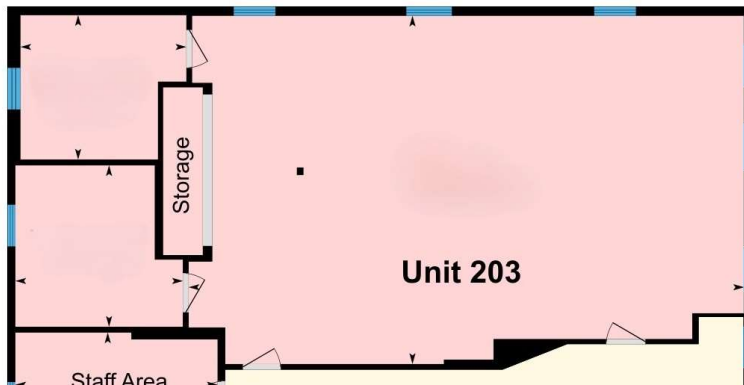
**Contact Scott Wright
503-335-3300**

Although we obtained the information above from sources we believe to be reliable, we make no guarantee about its accuracy. It is submitted subject to the possibility of errors, omissions, change of price, rental or other conditions, prior sale, lease or financing, or withdrawal without notice. You and your legal advisors should conduct your own investigation of the property before transaction.

205 SE Grand Ave



Upper Unit 203 1,158 Sq ft



**Contact
Scott Wright
503-335-3300**

Although we obtained the information above from sources we believe to be reliable, we make no guarantee about its accuracy. It is submitted subject to the possibility of errors, omissions, change of price, rental or other conditions, prior sale, lease or financing, or withdrawal without notice. You and your legal advisors should conduct your own investigation of the property before transaction.