



INDUSTRIAL PROPERTY

FOR LEASE

5,250+/- SF - 10,500+/- SF Available



2382 Pro Tec Way, Loganville, GA. 30052

PROPERTY SUMMARY

Total SF: 5,250 - 10,500+/- SF
Zoning: M-1 (Walton County)
Year Built: 2022

- 1,050 - 2,100+/- SF Office Buildout
- 16' - 18' Clear Ceiling Height (Clear Span)
- 2 Grade-Level Doors (12' X 14')
- 2 Dock Position (12' X 14')
- 3 Phase Power
- Easy Access to Hwy 78



For More Information Contact:
Jeremy Dupree, SIOR
770.633.5312
jdupree@COREcommercialinc.com

www.COREcommercialinc.com

Every effort has been made to provide accurate information, but no liability is assumed for omissions and errors.

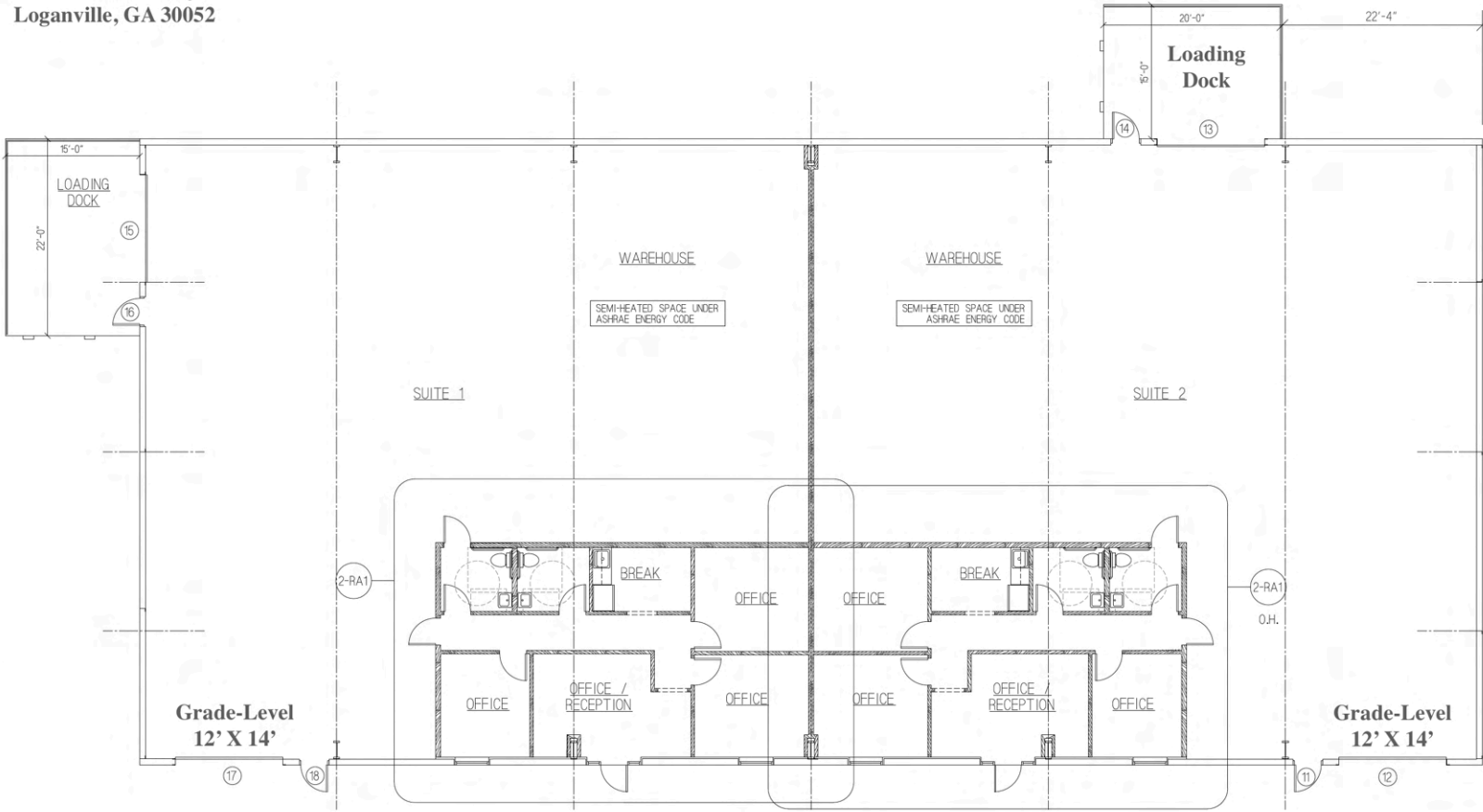


INDUSTRIAL PROPERTY

FOR LEASE

5,250+/- SF - 10,500+/- SF Available

2382 Pro Tec Way
Loganville, GA 30052



1 FIRST FLOOR PLAN
SCALE: 1/8" = 1'-0"



For More Information Contact:
Jeremy Dupree, SIOR
770.633.5312
jdupree@COREcommercialinc.com

www.COREcommercialinc.com

Every effort has been made to provide accurate information, but no liability is assumed for omissions and errors.



INDUSTRIAL PROPERTY

FOR LEASE

5,250+/- SF - 10,500+/- SF Available



For More Information Contact:
Jeremy Dupree, SIOR
770.633.5312
jdupree@COREcommercialinc.com

www.COREcommercialinc.com

Every effort has been made to provide accurate information, but no liability is assumed for omissions and errors.