

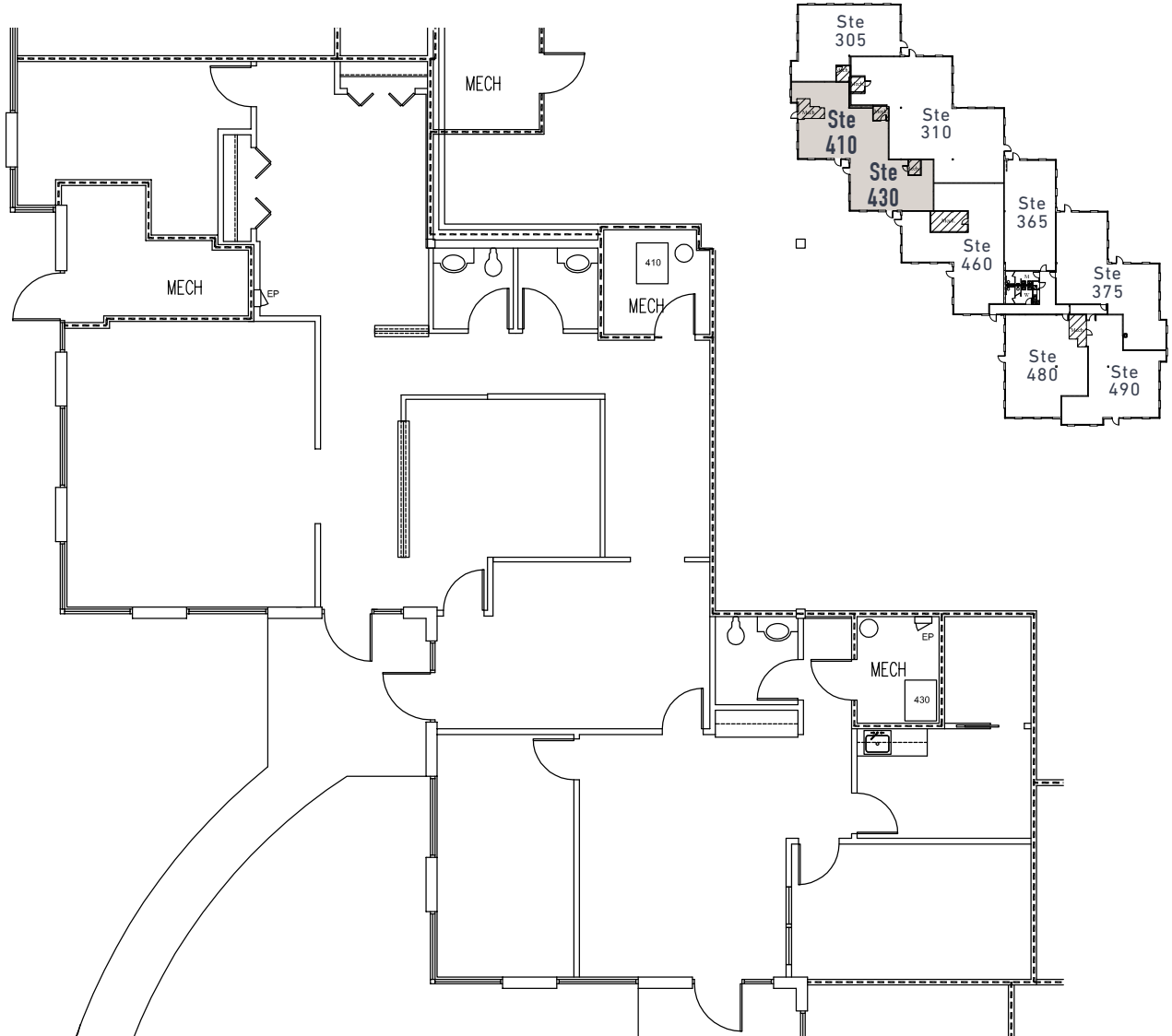


QUAIL RIDGE OFFICE CENTRE

300-490 Quail Ridge Drive
Westmont, IL

Building B
Suites 410-430 / 2,902 RSF

Divisible to 1,401 RSF



CONTACT

JIM ADLER
630 691 0605
jadler@hiffman.com

DAN O'NEILL
630 691 0610
doneill@hiffman.com

COURTNEY SWEISS
630 317 0748
csweiss@hiffman.com

GROUP RMC

NAIHiffman
Commercial Real Estate Services, Worldwide