

NEW - TO - MARKET

7825 SOMERSET BLVD, PARAMOUNT, CA

INDUSTRIAL CONDO UNIT W/ DOCK & GROUND LEVEL LOADING



AVAILABLE

PROPERTY FEATURES

- ± 12,052 SF of RBA
- 1 Dock High
- 1 Ground Level
- 22' Clear Height
- Built 1990
- 400 Amps
- Minimal Office Buildout
- Fully Sprinklered

NICK THORPE (213) 892-8881 x 393 | NTHORPE@RAGINC.COM | ID:02021894

CORPORATE HQ: 545 SOUTH FIGUEROA STREET, SUITE 1209, LOS ANGELES, CA 90071
CORPORATE ID: 01301202

Neither owner nor broker make any representations or warranties as to the accuracy or completeness of any evaluations materials, including building dimensions, any assumptions and resulting projections or that actual results will conform to any projections contained herein. Owner and broker expressly disclaim any liability for representations or warranties, expressed or implied, contained in this brochure, or in any other written, oral, or other communications transmitted or made available to prospective buyers, including and without limitation to, electronic brochures, computer disks containing files with floor plans, financial data and projections, etc.



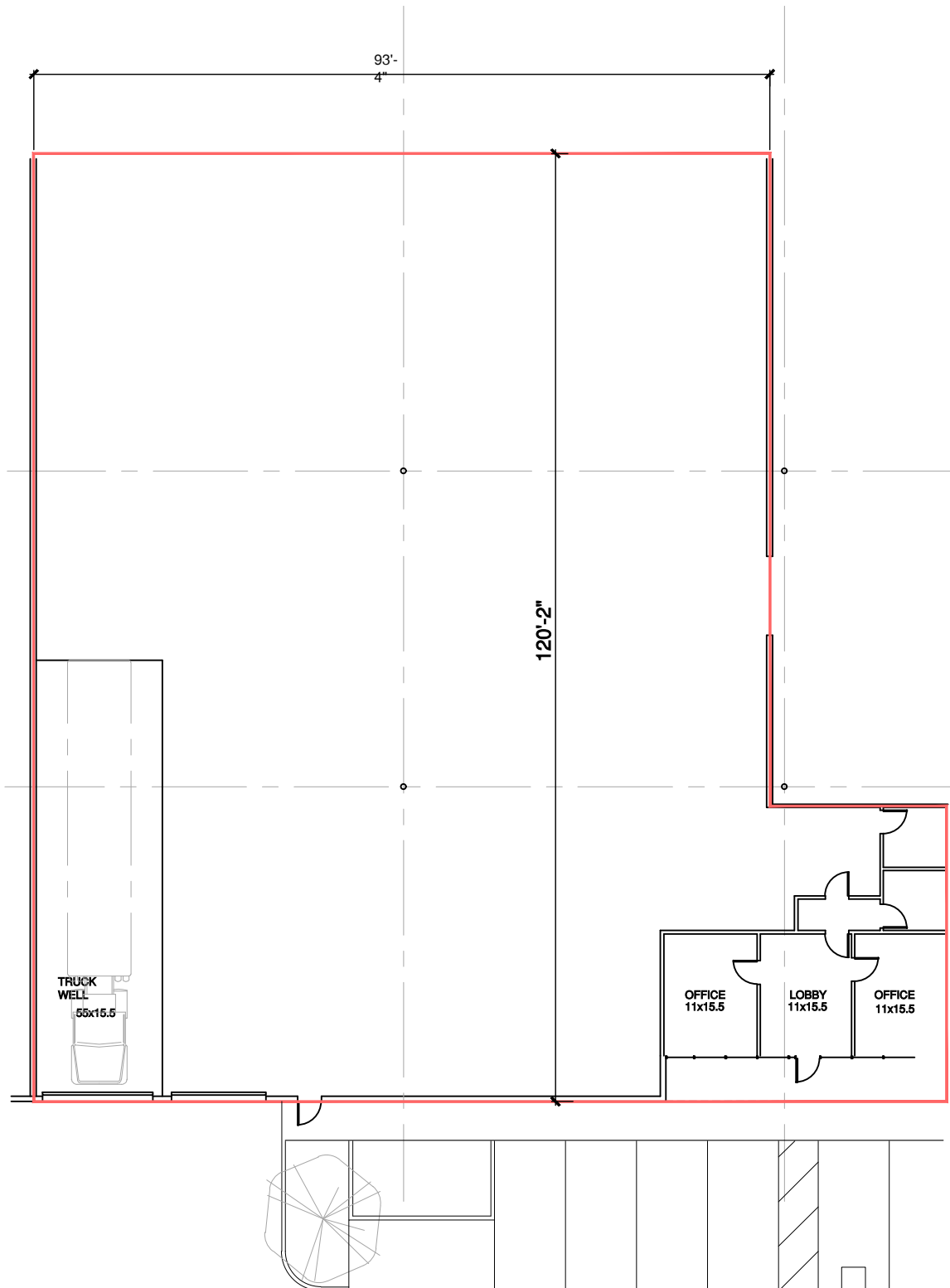
**REALTY
ADVISORY
GROUP INC.**

RAGINC.COM



SITE PLAN

UNIT B
12,052 SF



CONTACT

NICK THORPE (213) 892-8881 x 393 | NTHORPE@RAGINC.COM | ID:02021894

CORPORATE HQ: 545 SOUTH FIGUEROA STREET, SUITE 1209, LOS ANGELES, CA 90071
CORPORATE ID: 01301202



**REALTY
ADVISORY
GROUP INC.**

EST. 1995

RAGINC.COM

Neither owner nor broker make any representations or warranties as to the accuracy or completeness of any evaluations materials, including building dimensions, any assumptions and resulting projections or that actual results will conform to any projections contained herein. Owner and broker expressly disclaim any liability for representations or warranties, expressed or implied, contained in this brochure, or in any other written, oral, or other communications transmitted or made available to prospective buyers, including and without limitation to, electronic brochures, computer disks containing files with floor plans, financial data and projections, etc.