

- GENERAL SITE NOTES:**
1. Status designated as accessible will require a painted accessible symbol and sign. (See Details)
 2. Fire lane markings and signs to be installed as directed by the Fire Marshall.
 3. Aisle markings, directional arrows and stop bars will be painted at each driveway as shown on the plans.
 4. Building sidewalks, ramps, and bollards are building contractor responsible items. See architectural plans.
 5. All dimensions are to back of curb unless otherwise noted.

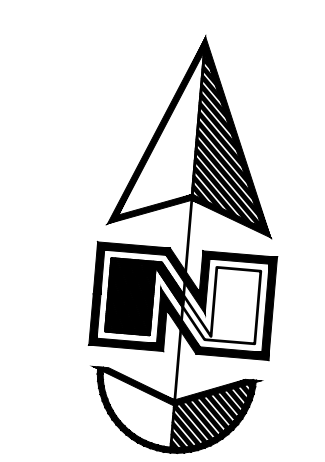
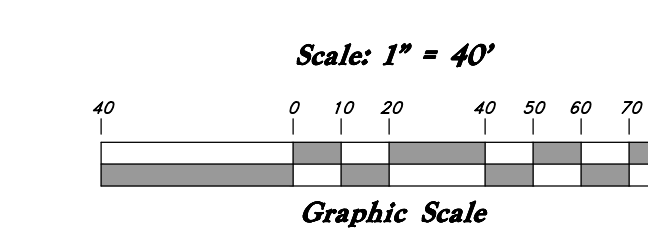
PRIVATE ENGINEER'S NOTICE TO CONTRACTORS
The Contractor agrees that he shall assume sole and complete responsibility for job site conditions during the course of construction of this project, including safety of all persons and property; that this requirement shall apply continuously and not be limited to normal working hours; and that the contractor shall defend, indemnify, and hold the owner and the engineer harmless from any and all liability, real or alleged, in connection with the performance of work on this project, excepting for liability arising from the sole negligence of the owner or the engineer.

ALL CONSTRUCTION TO CONFORM TO CITY STANDARDS AND SPECIFICATIONS IN RIGHT OF WAY

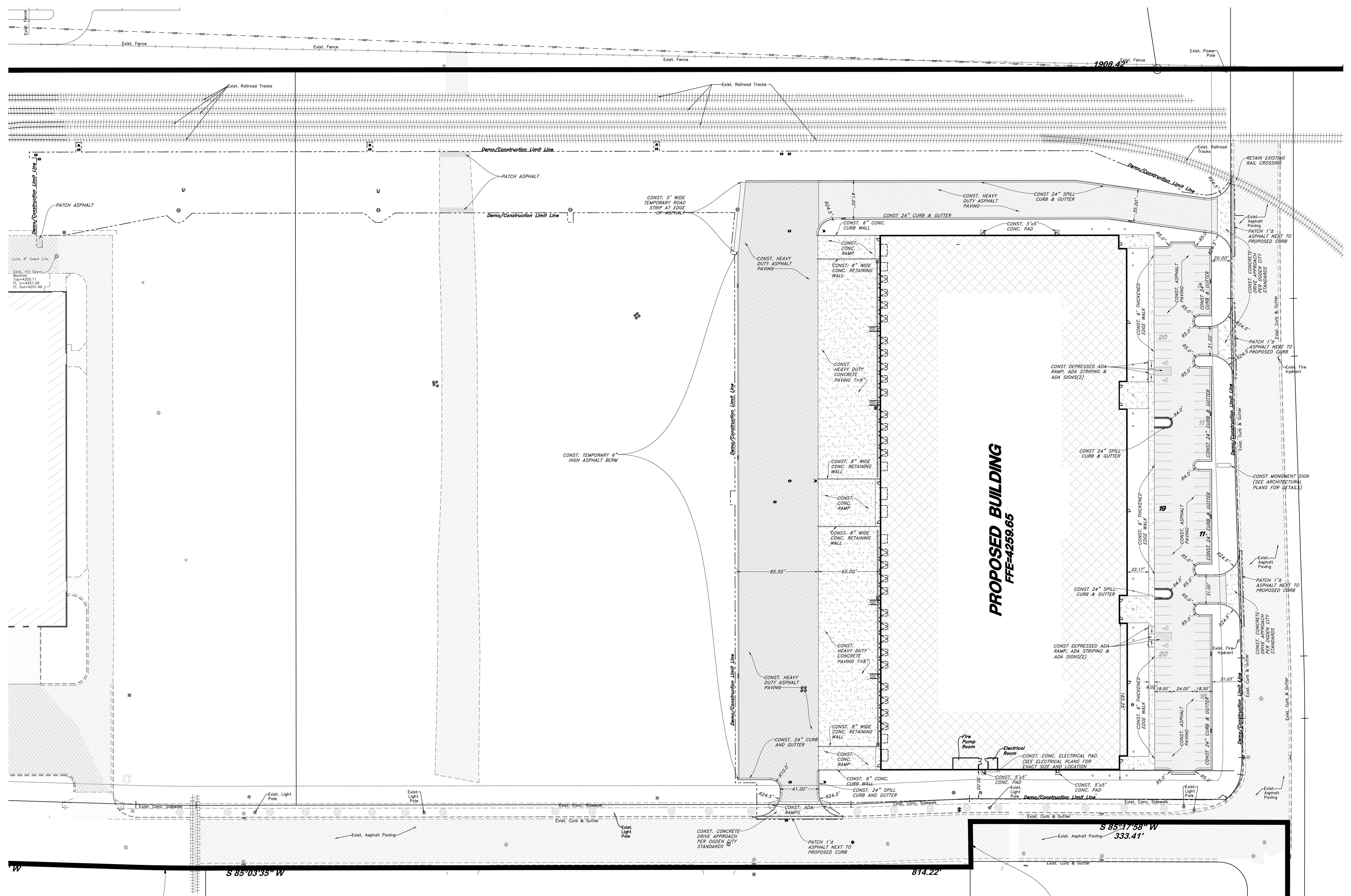
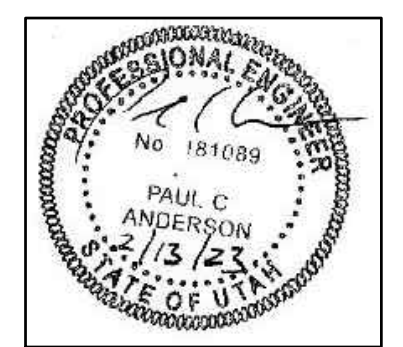
- San. Sewer Manhole**
Water Manhole
Storm Drain Manhole
Cleanout
Electrical Manhole
Catch Basins
Exst. Fire Hydrant
Fire Hydrant
Exst. Water Valve
Water Valve
Sanitary Sewer
Culinary Water
Gas Line
Irrigation Line
Storm Drain
Telephone Line
Secondary Waterline
Power Line
Fire Line
Land Drain
Power pole w/ guy

- Light Pole**
Fence
Flowline of ditch
Overhead Power line
Corrugated Metal Pipe
Concrete Pipe
Reinforced Concrete Pipe
Ductile Iron
Polyvinyl Chloride
Top of Asphalt
Edge of Asphalt
Centerline
Flowline
Finish Floor
Top of Curb
Top of Wall
Top of Walk
Top of Concrete
Natural Ground
Finish Grade
Match Existing
Fire Department Connection
Finish Contour
Exst. Contour

- Finish Grade**
Exst. Grade
Ridge Line
Direction of Flow
Existing Asphalt
New Asphalt
Heavy Duty Asphalt
Existing Concrete
New Concrete
Spill Curb & Gutter
Demo Tree



REVISIONS:



SD SET
BDO 755



1150 South Depot Dr., Suite 100 Ogdens, Utah 84404
OWNER PROJECT NO.:
GSBS PROJECT NO.:
ISSUED DATE:
Site Plan