

Aurora Park Plaza One & Two Office Space For Lease



Available For Lease

Suites From 902 Sqft - 2,925 Sqft

Max Contiguous 2,925 Sqft

Min 902 Sqft

Lease Rate \$19 to \$21 Per Sqft

Parking: 3 Per 1,000 Sqft

Great Views

Local Ownership & Management

Tenant Improvements Negotiable

Easy Access to I-225 & Tech Center

Substantial Building Improvements

12500-12510 E. Iliff Ave. Aurora, CO 80014



Brian Basham

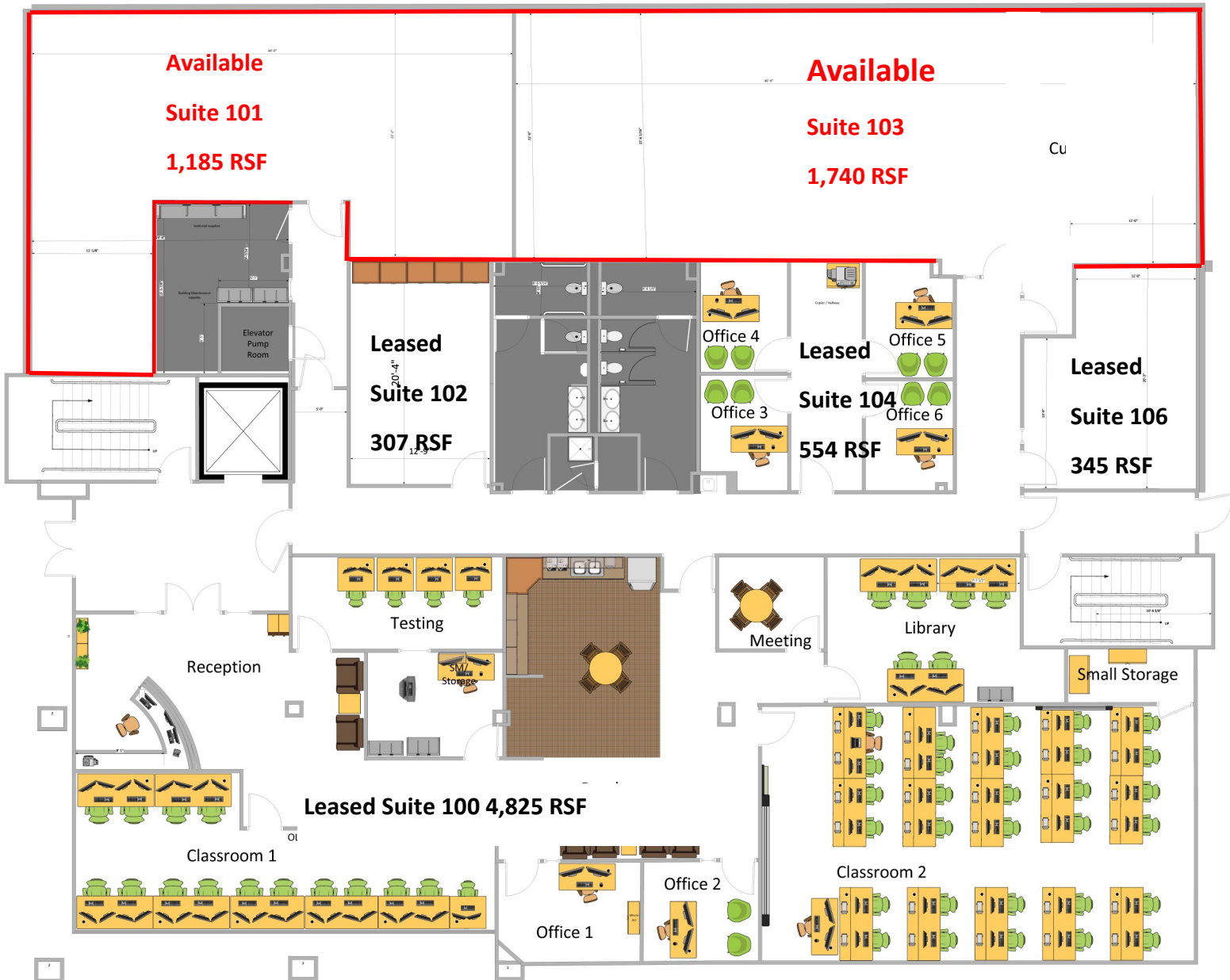
Broker/Owner

Basham Investments, LLC

303-907-7447

1499 Blake St. Suite 1D

Denver, CO 80202



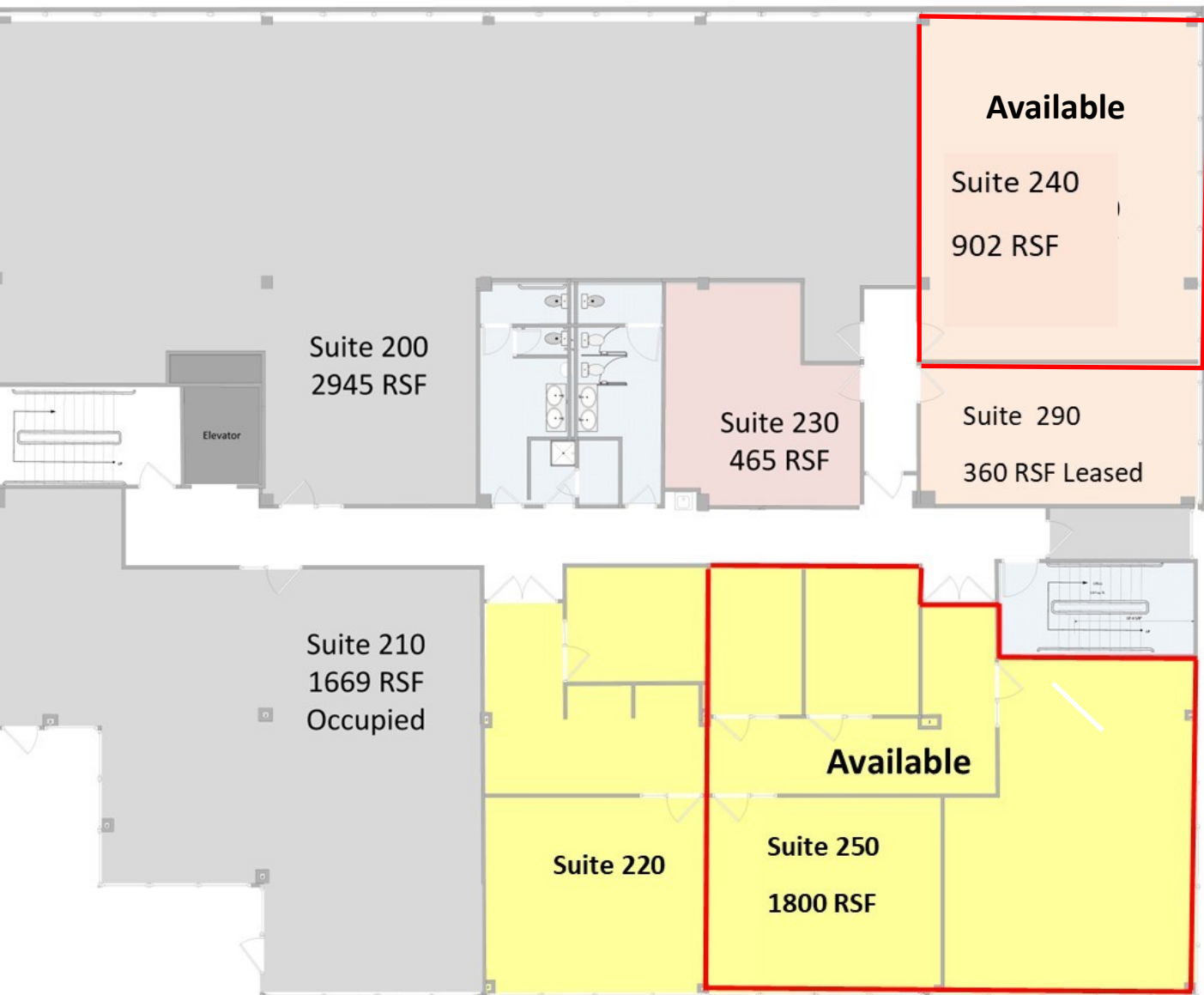
Available Suites

Suite 101 1,185 Rentable Square Feet

Suite 103 1,740 Rentable Square Feet

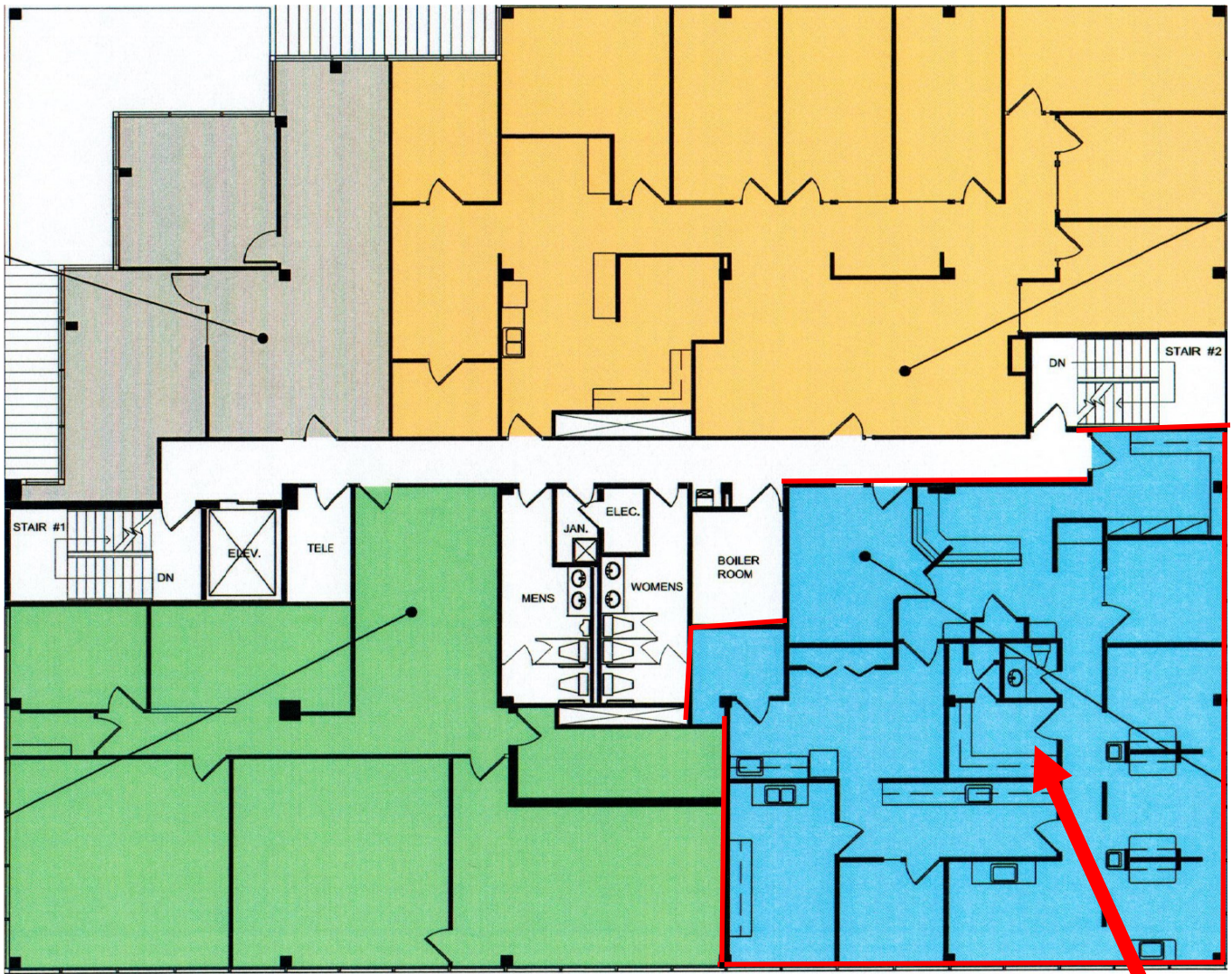
Total Available 2,925 Rentable Square Feet

All New Corner Space With New, LED Lighting, Ceiling Grid, Carpet and Paint Ready To Go!



Available Suites

Suite 250 902 Square Feet Wide Open Corner Suite
Suite 240 1,800 Square Feet
Coner Suite With Mix Private Office And Open Space



Available Suites

**Available
Suite 305**

**Suite 305 2,312 Square Feet
Former Dentist Space With Private Bath
Corner Suite With Lots Of Options!**



Property Information

| | |
|--------------------------------|----------------|
| Building(s) Size | 53,471 SQFT |
| City | Aurora |
| County | Arapahoe |
| Year Built | 1985 |
| Number of Tenants | 31 |
| Parking | 3 per thousand |
| Leased SQFT | 47,332 |
| Available SQFT | 6,139 |
| Lease Term | 3 Plus Years |
| Tenant Finish Allowance | Negotiable |
| Lease Rate | \$19-\$21 |
| Lease Type | Full Service |



Brian Basham * Basham Investments, LLC

303-907-7447 * brian@bashamcre.com