



SYCAMORE COMMERCE CENTER

10TH + SYCAMORE

TURNKEY OFFICE SPACE

400 South Sycamore Avenue, Suite 101 | Sioux Falls, SD 57110



SIZE

11,944 sqft



PRICE

\$9.00 PSF (NNN)
Estimated NNN: \$2.52 PSF



LOCATION

Located at the corner of East 10th Street and Sycamore Avenue.



LAYOUT

Spacious professional office layout featuring 16 private offices, a dedicated conference room, a break room, and convenient in-suite restrooms.



TRAFFIC

20,400 VPD



FLOOR PLAN

The space was a former Bank Operations Center, but its wide-open layout lends itself to a wide variety of office users.

Property is co-listed with Jim Dunham & Associates.
Information deemed reliable but not guaranteed.



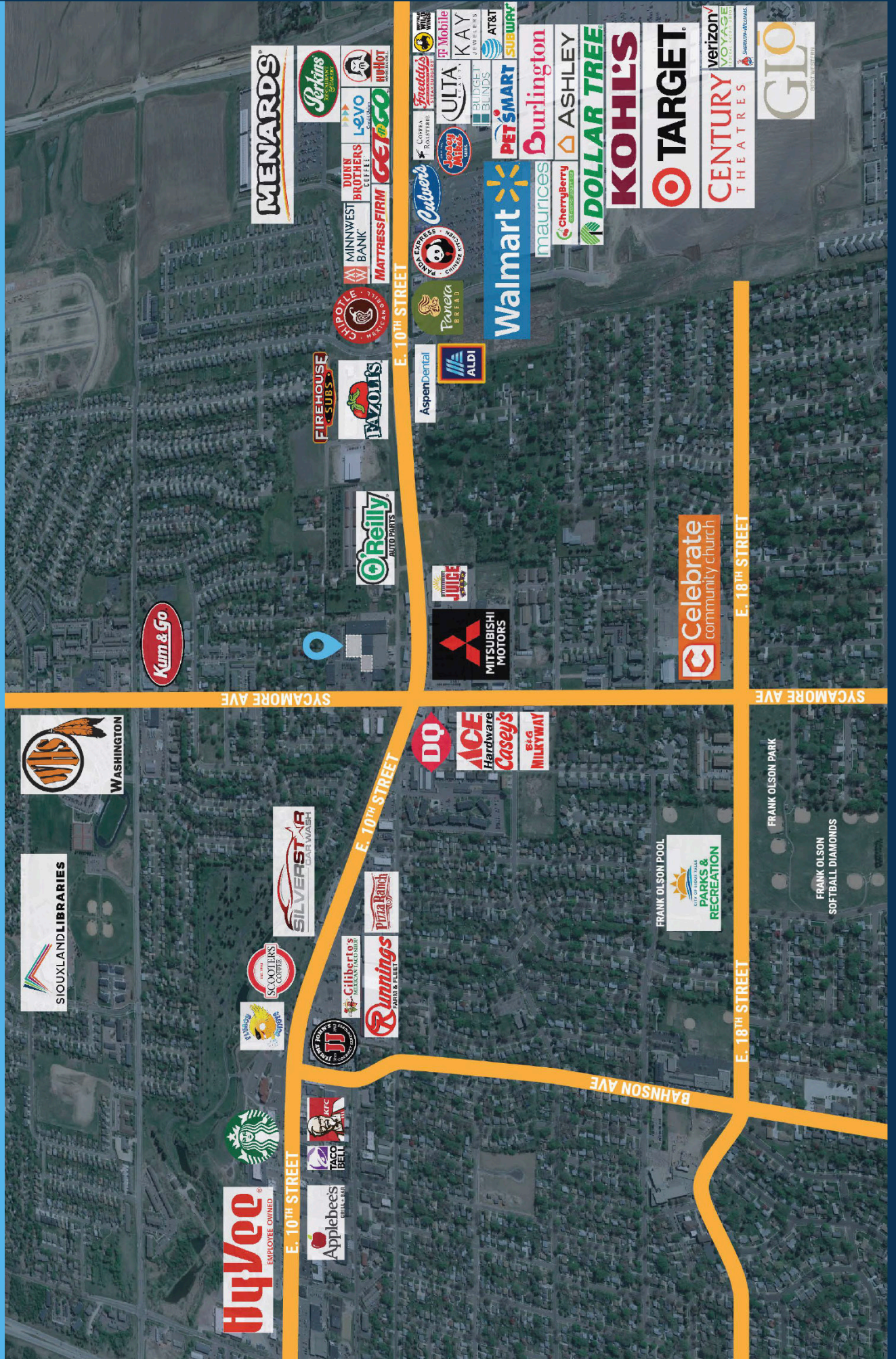
TYSDAL
COMMERCIAL

7400 South Bitterroot Place
Sioux Falls, South Dakota 57108
TysdalCommercial.com



310-4509
mike@tysdalcommercial.com

AREA MAP



PARCEL MAP



SYCAMORE AVENUE

SUITE 101
11,850 sqft

EAST ARROWHEAD PARKWAY



FLOOR PLAN



EXTERIOR PHOTO



INTERIOR PHOTOS

