

CWC - SPT - RECORD OF SURVEY
 TOTAL PARKING REQUIRED = 5 PER 1,000 s.f.
 07.10.14

- PARCEL 1
- BUILDING 1
 - 1st Floor = 47 Spaces
 - 2nd Floor = 70 Spaces
- TOTAL REQUIRED = 117 Spaces
- PARCEL 2
- BUILDING 2
 - 1st Floor = 75 Spaces
- BUILDING 3
 - 1st Floor = 15 Spaces
- BUILDING 4
 - 1st Floor = TBD Spaces
 - 2nd Floor = TBD Spaces
 - 3rd Floor = TBD Spaces
- TBD Spaces
- TOTAL REQUIRED = TBD Spaces

STATE HIGHWAY 200

McGHEE ROAD

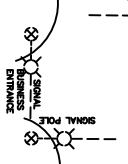
UNION PACIFIC RAILROAD

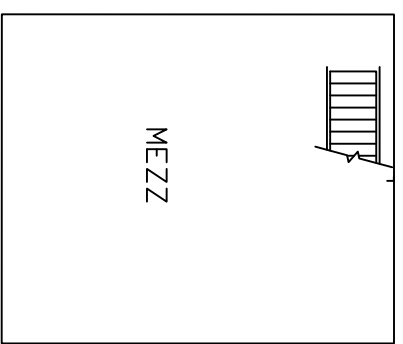
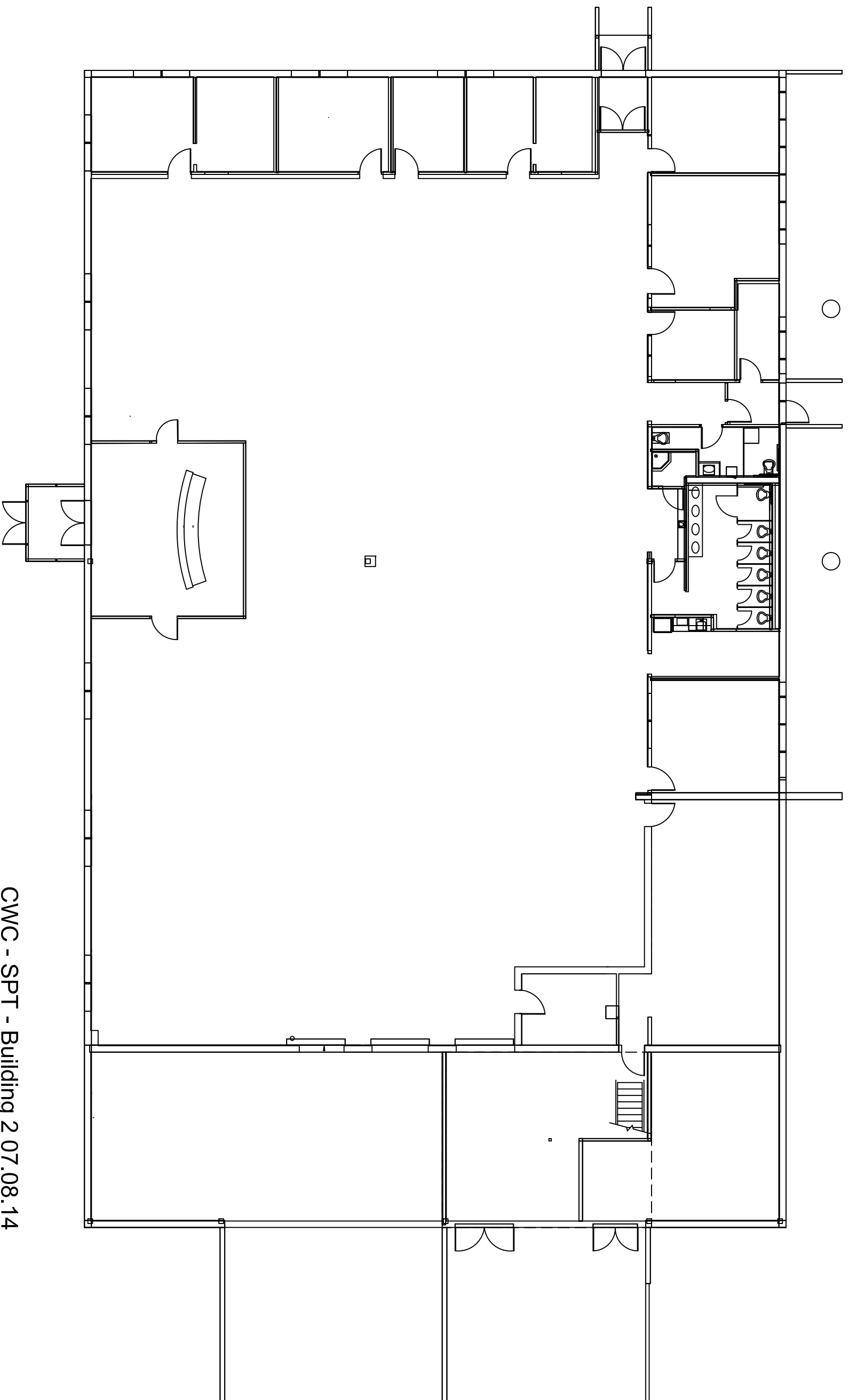
City of Kootenai

City of Ponderay

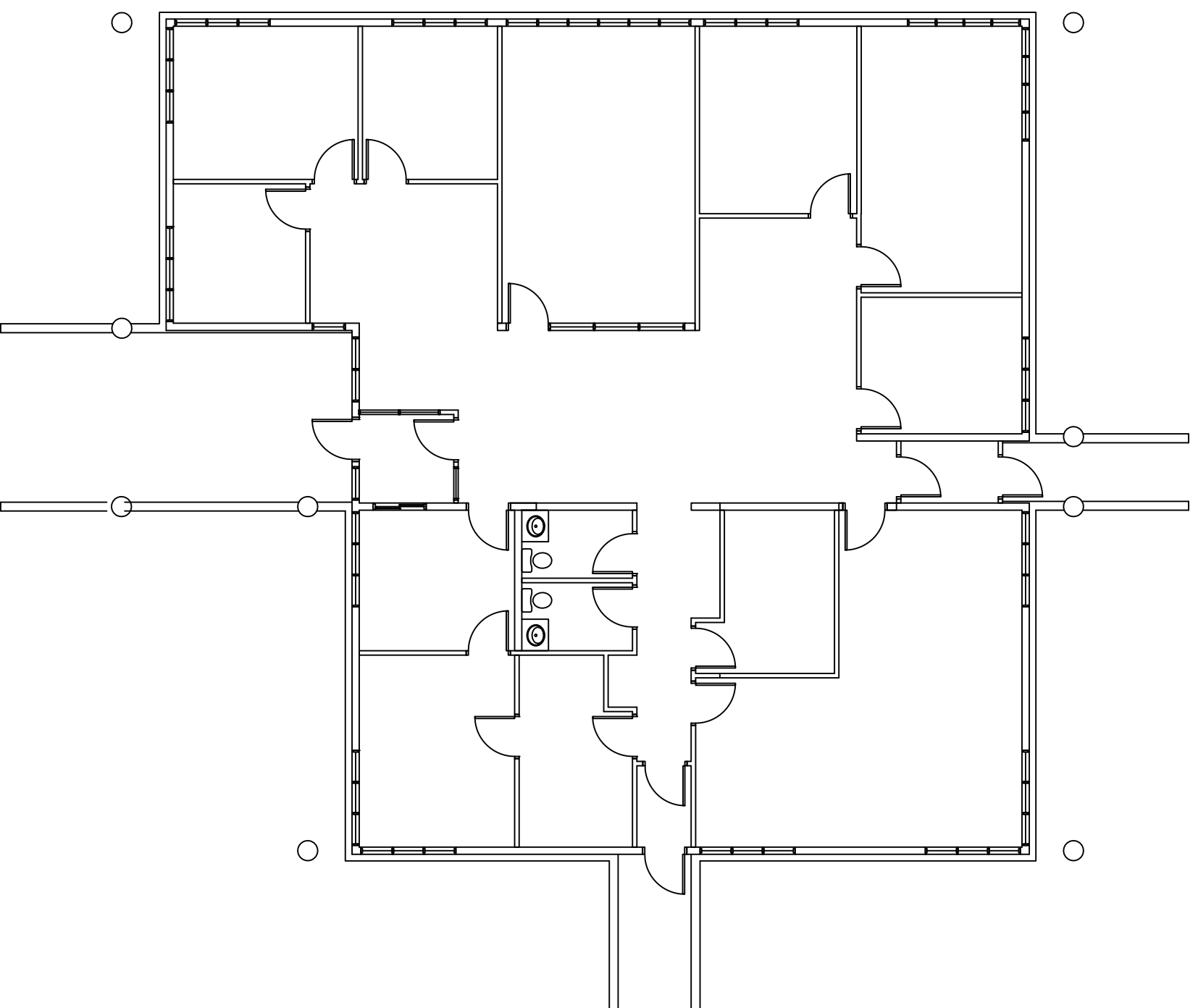
PARCEL 1
8.05 AC.

PARCEL 2
11.97 AC.



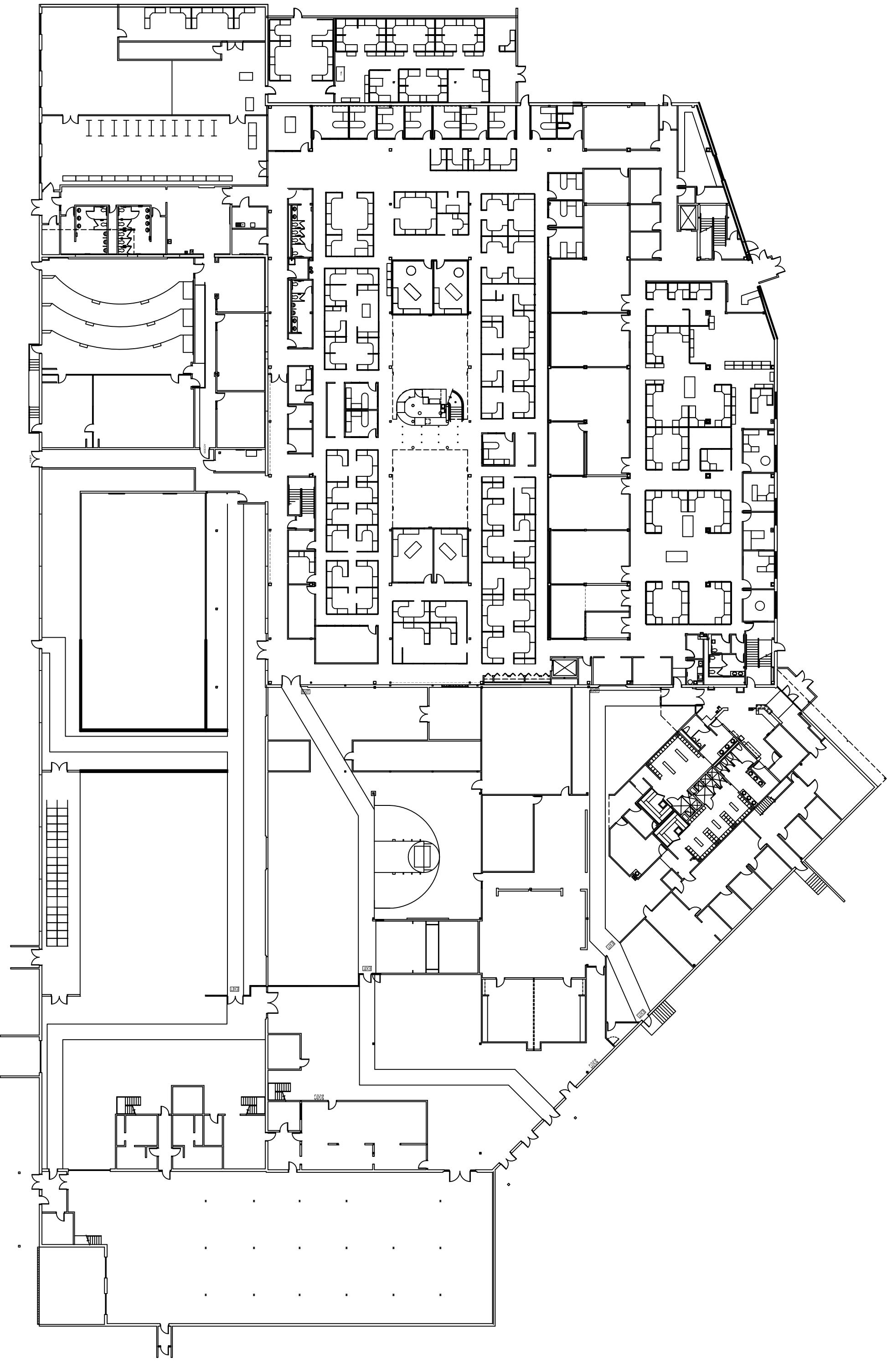


CWC - SPT - Building 2 07.08.14
+/- 16,483 sq.ft

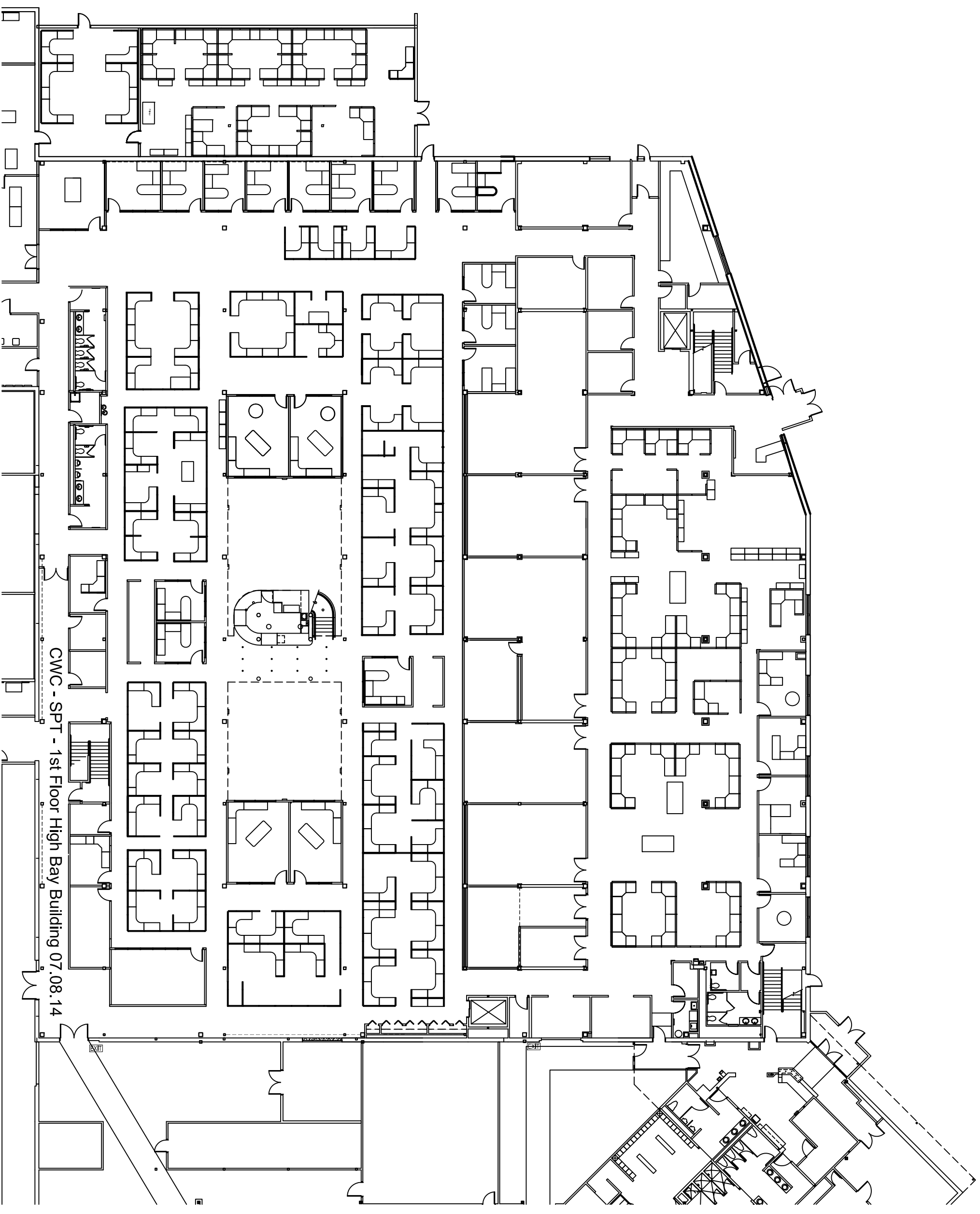


CWC SPT - Building 3 07.08.14

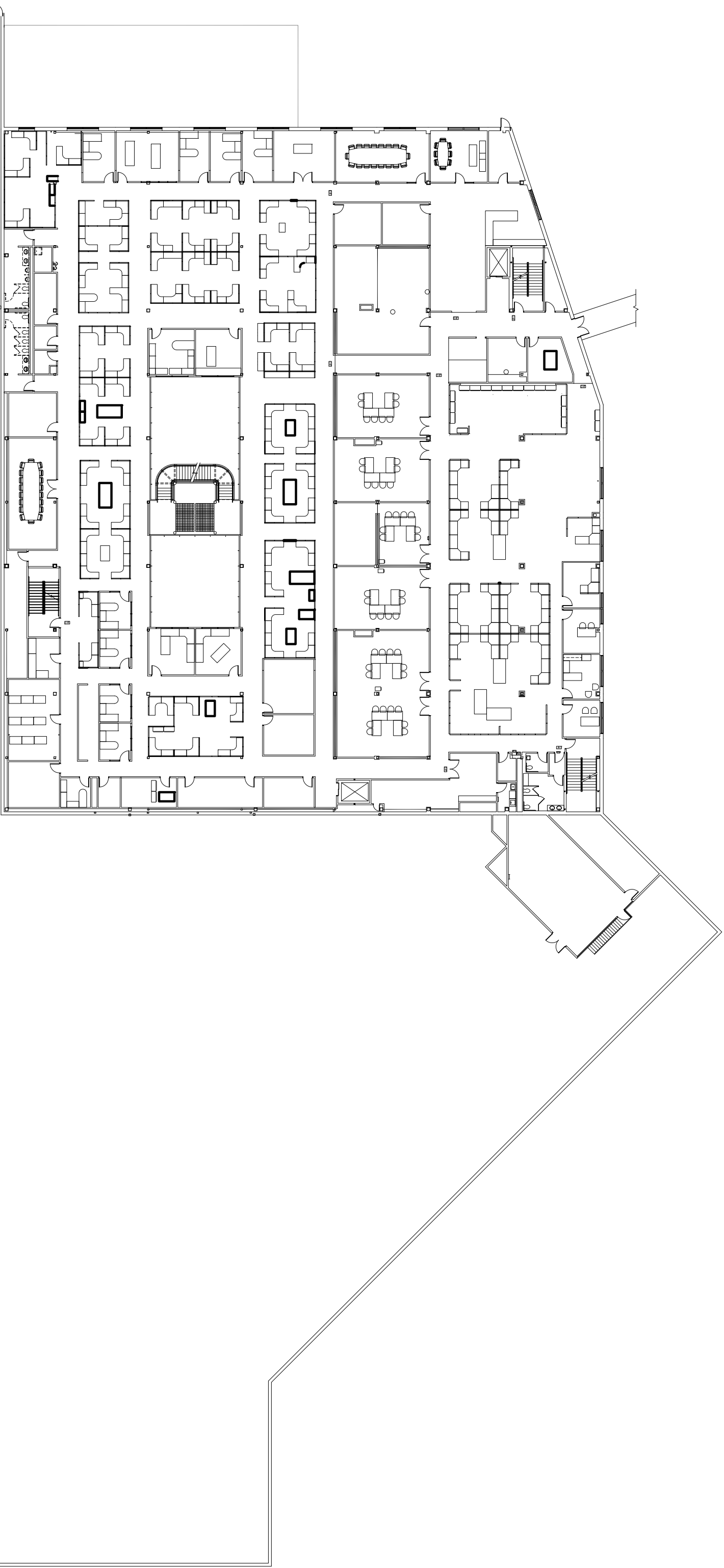
+/- 3,665 sq.ft.



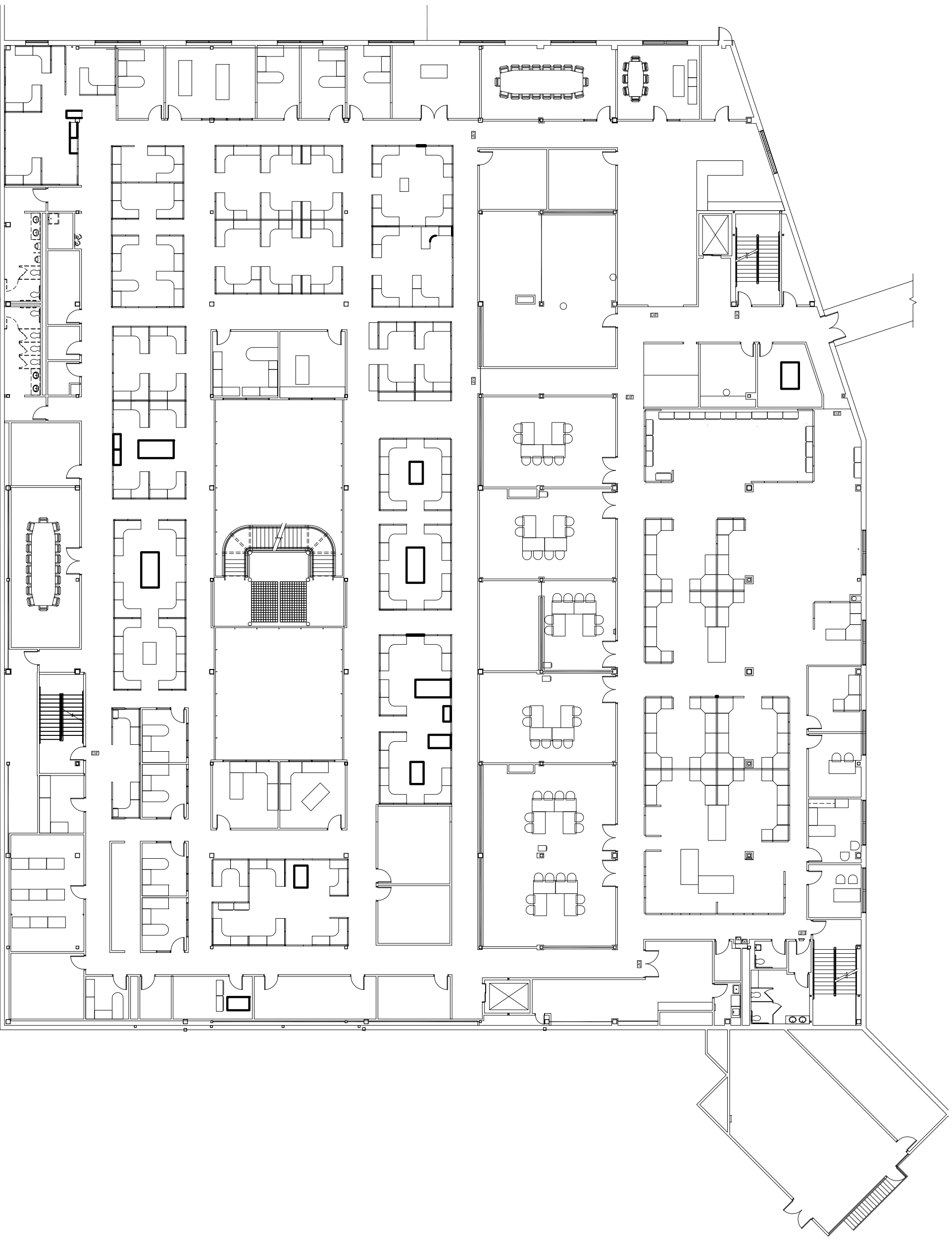
CWC - SPT - 1st Floor High Bay Building 07.08.14
+/- 120,000 sq.ft



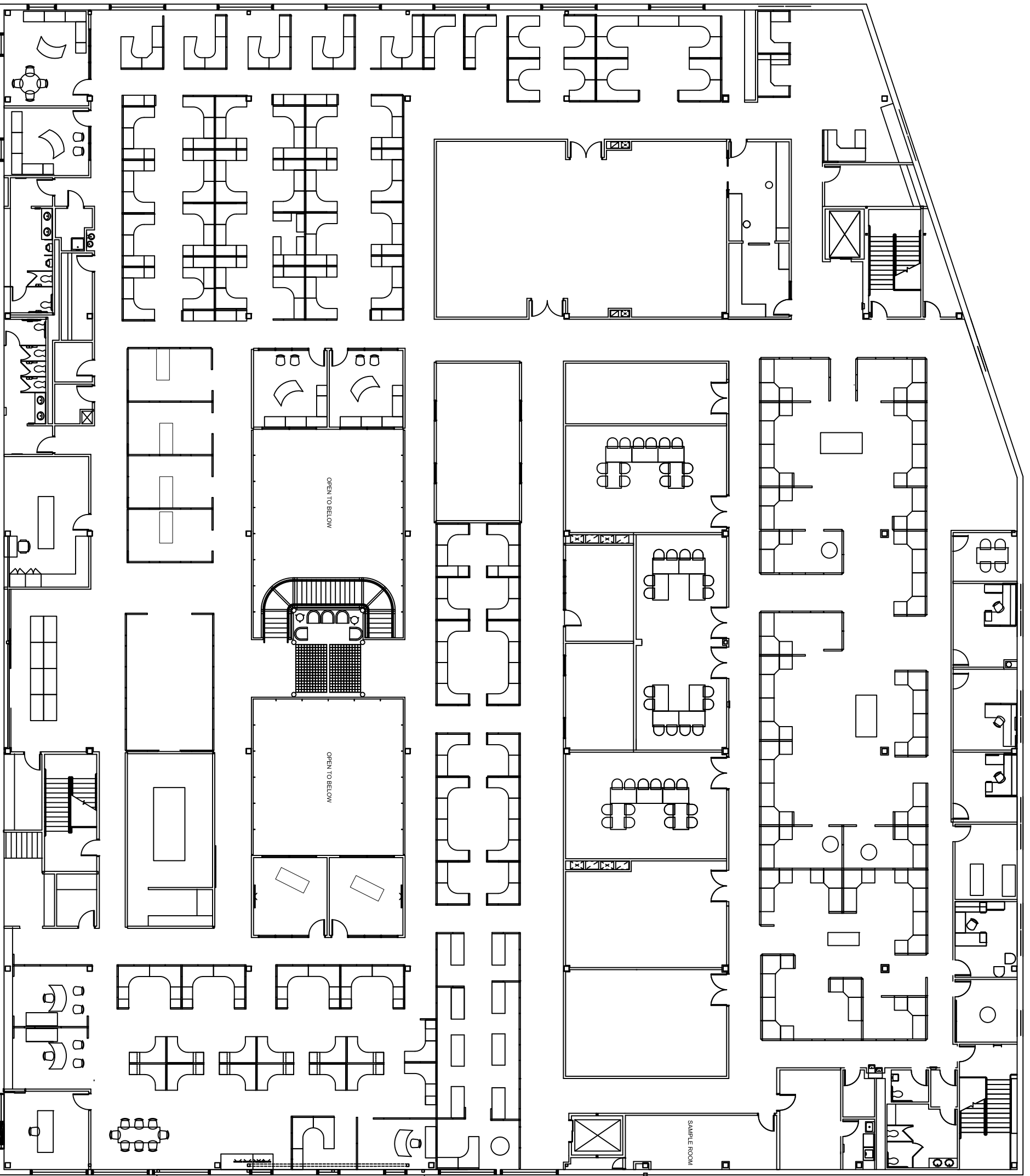
CWC - SPT - 1st Floor High Bay Building 07.08.14



CWC - SPT - 2nd Floor High Bay Building 07.08.14
+/- 40,000 sq. ft.



CWC - SPT - 2nd Floor High Bay Building 07.08.14
+/- 40,000 sq. ft.



CWC - SPT - 3rd Floor High Bay Building 07.08.14
 +/- 40,000 sq.ft.