

Oxford Companies
734.665.6500
oxfordcompanies.com



Integrated
Real Estate
Services



Office Building For Lease

555 Briarwood Circle

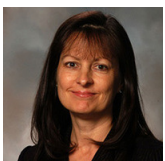
Suite 310

Ann Arbor, MI 48108

6,186 SF

\$26.75 SF/yr (MG)

Available



Contact Karen O'Neil for
more information or to
schedule a tour.

Office: 734.665.6500
Cell: 734.323.4263
koneil@oxfordcompanies.com

555 Briarwood Circle
Suite 310
Ann Arbor, MI 48108



Integrated
Real Estate
Services



OFFERING SUMMARY

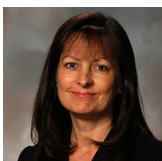
Lease Rate:	\$26.75 SF/yr (MG)
Available SF:	6,186 SF
Year Built:	1986
Renovated:	2014
Ceiling Height:	8'
Parking Ratio:	3.9
Zoning:	TC1
Submarket:	South Side Ann Arbor

PROPERTY OVERVIEW

Directly at the hub of Ann Arbor's bustling Southside neighborhood, 555 Briarwood Circle is ideal for organizations looking for a superior Ann Arbor office location and nearby amenities. Adjacent to Briarwood Mall, which is undergoing a transformational redevelopment, 555 Briarwood Cir offers dining, shopping, and lodging all within walking distance. With immediate access to I-94 and just 10 minutes from downtown Ann Arbor, 555 Briarwood Cir is conveniently located for both employees and clients. Free parking surrounds the building adding to the convenience of this work environment.

PROPERTY HIGHLIGHTS

- Mix of collaborative workspace along with 12 private offices and a conference room
- Located adjacent to the brand-new Briarwood Mall redevelopment
- Immediate access to I-94 via S. State St. and minutes to downtown Ann Arbor & U-M
- Streamlined leasing experience for convenience and ease
- Locally owned and professionally managed
- 24/7 on-call emergency maintenance



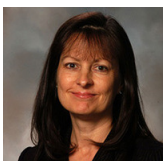
Contact Karen O'Neil for more information or to schedule a tour.

Office: 734.665.6500
Cell: 734.323.4263
koneil@oxfordcompanies.com

555 Briarwood Circle
Suite 310
Ann Arbor, MI 48108



Integrated
Real Estate
Services



Contact Karen O'Neil for
more information or to
schedule a tour.

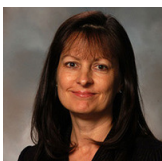
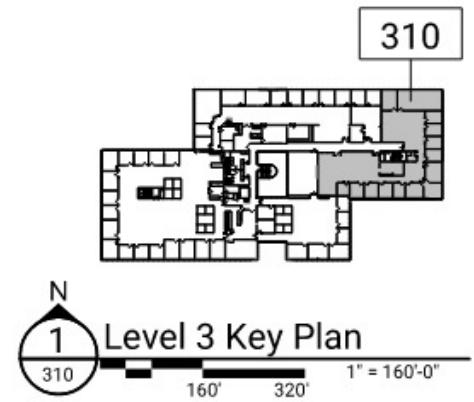
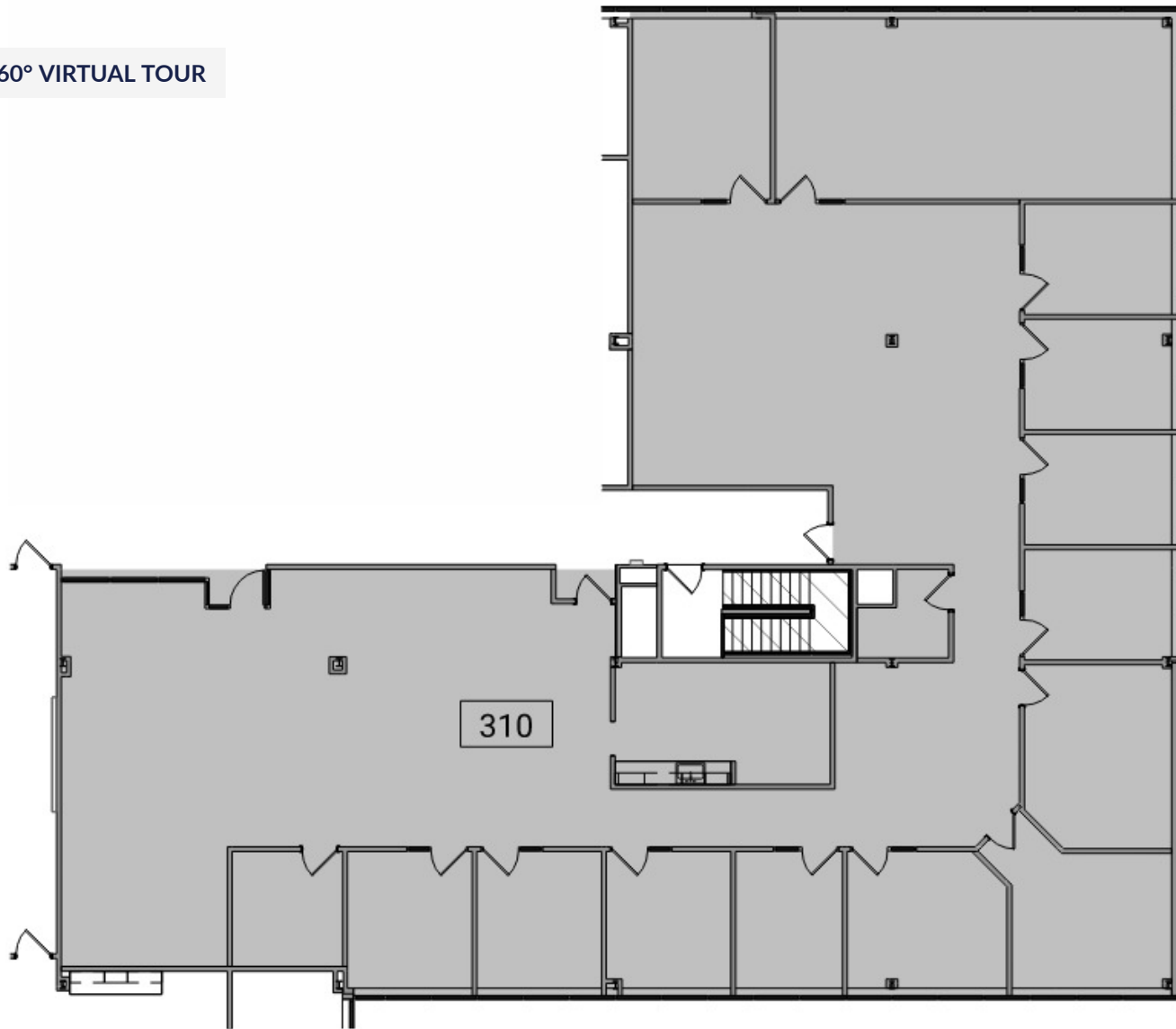
Office: 734.665.6500
Cell: 734.323.4263
koneil@oxfordcompanies.com

555 Briarwood Circle
Suite 310
Ann Arbor, MI 48108



Integrated
Real Estate
Services

360° VIRTUAL TOUR



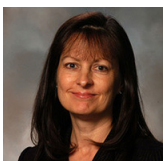
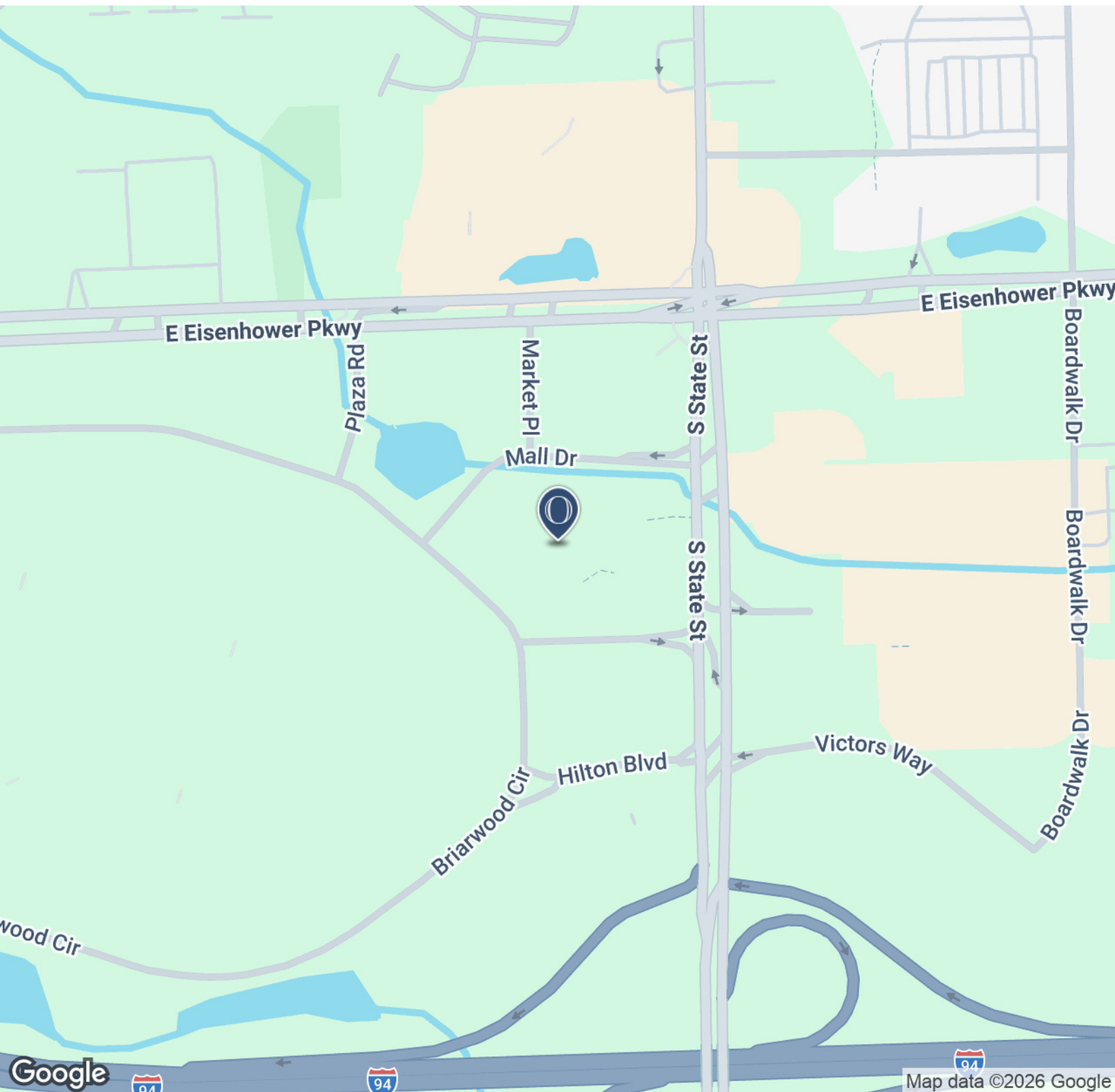
Contact Karen O'Neil for more information or to schedule a tour.

Office: 734.665.6500
Cell: 734.323.4263
koneil@oxfordcompanies.com

555 Briarwood Circle
Suite 310
Ann Arbor, MI 48108



Integrated
Real Estate
Services



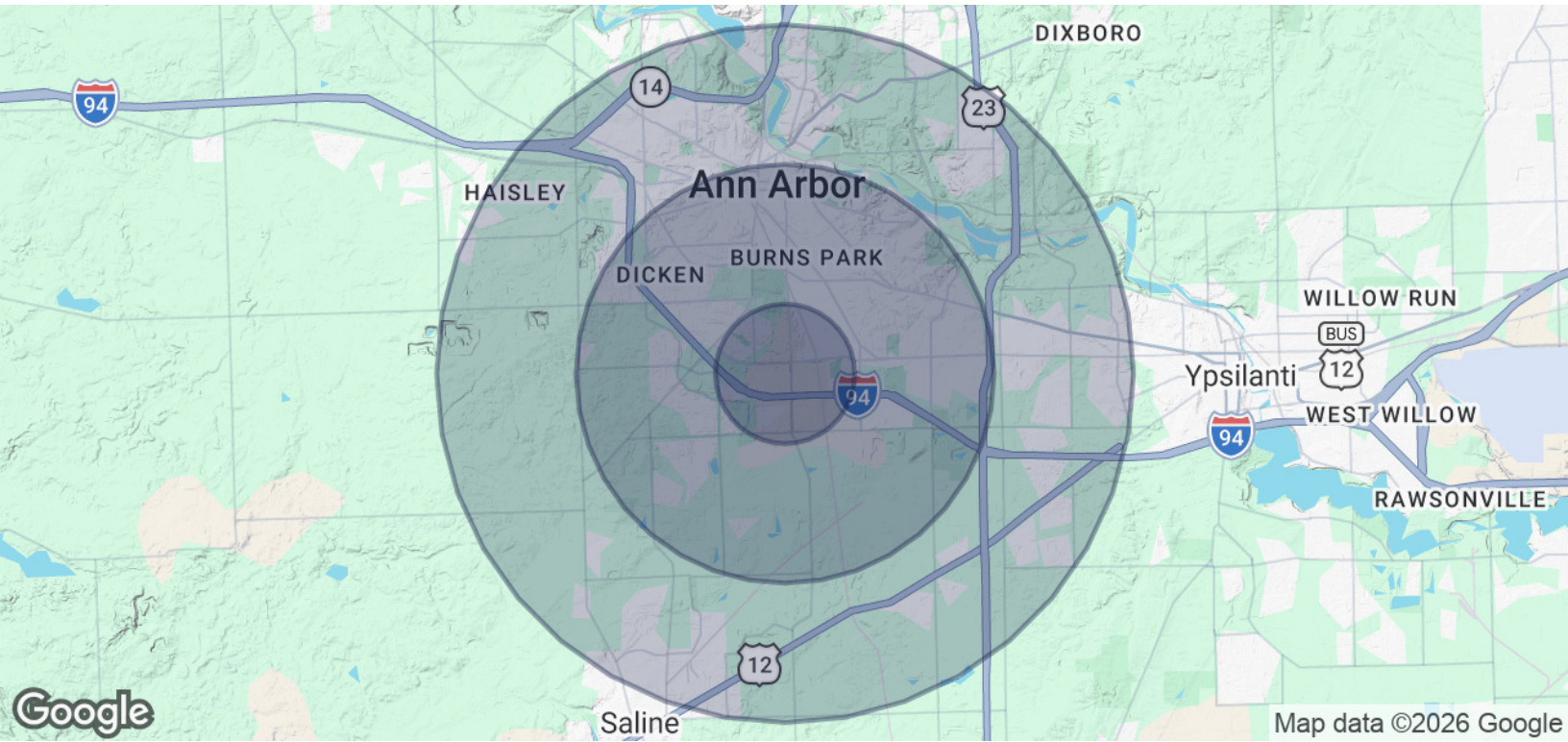
Contact Karen O'Neil for
more information or to
schedule a tour.

Office: 734.665.6500
Cell: 734.323.4263
koneil@oxfordcompanies.com

555 Briarwood Circle
 Suite 310
 Ann Arbor, MI 48108



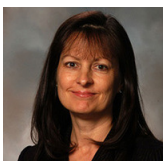
Integrated
 Real Estate
 Services



POPULATION	1 MILE	3 MILES	5 MILES
Total Population	9,311	93,090	182,997
Average age	31.6	31.4	32.8
Average age (Male)	31.9	31.3	32.5
Average age (Female)	31.1	31.4	33.2

HOUSEHOLDS & INCOME	1 MILE	3 MILES	5 MILES
Total households	4,650	35,915	71,140
# of persons per HH	2.0	2.6	2.6
Average HH income	\$59,804	\$77,332	\$79,472
Average house value	\$117,554	\$321,105	\$320,385

* Demographic data derived from 2020 ACS - US Census



Contact Karen O'Neil for more information or to schedule a tour.

Office: 734.665.6500
 Cell: 734.323.4263
 koneil@oxfordcompanies.com