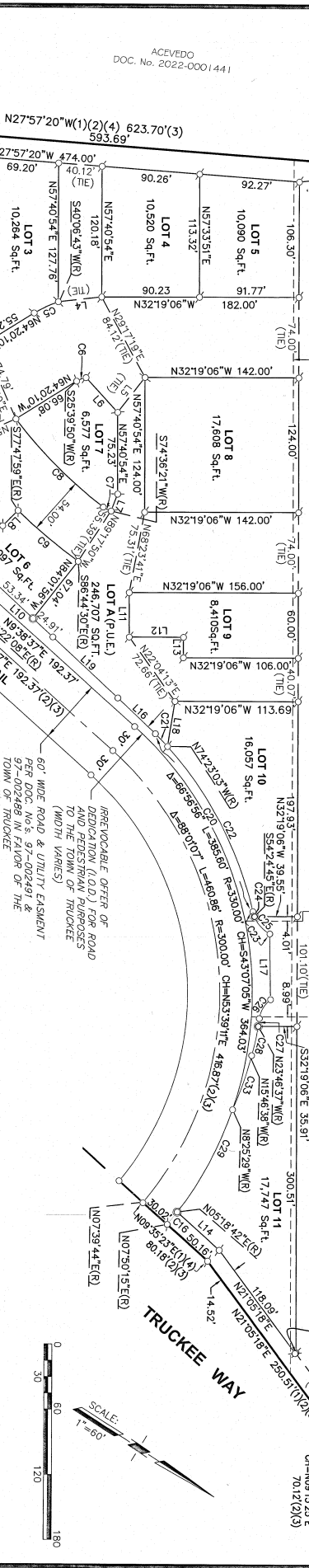


FOUND 3/4" REBAR W/ CAP PLUS 4976(1)
W 1/4 CORNER SECTION 11 T17N R16E MOUND OF STONE(1)(4)
N57°40'54"E 696.96'
125' WIDE GENERAL PLANNED POWER CO. PAPER EASEMENT PER BOOK 314, AT PAGE 242, ORNC.
35' WIDE NOW-EXCLUSIVE STREET EASEMENT PER DOC. No. 65-08974, BOOK 608, AT PAGE 628, ORNC.
35' WIDE NOW-EXCLUSIVE STREET EASEMENT PER DOC. No. 65-08974, BOOK 608, AT PAGE 628, ORNC.
ACCESS, SIGN, AND LANDSCAPE EASEMENT PER 2009-0019864 (SEE DETAIL 'B' SHEET 3)
15' WIDE TRIPUD EASEMENT PER BOOK 423, AT PAGE 285, ORNC.
15' WIDE TRIPUD EASEMENT PER BOOK 423, AT PAGE 285, ORNC.
80' WIDE ROAD & UTILITY EASEMENT PER DOC. No. 97-002491 & 97-002488 IN FAVOR OF THE TOWN OF TRUCKEE (WIDTH VARIES)
IRREVOCABLE OFFER OF ROAD AND PEDESTRIAN PURPOSES AND TRUCKEE (WIDTH VARIES)
FOUND 3/4" REBAR W/ CAP PLUS 4976(1)
W 1/4 CORNER SECTION 11 T17N R16E MOUND OF STONE(1)(4)
N57°40'54"E 696.96'
125' WIDE GENERAL PLANNED POWER CO. PAPER EASEMENT PER BOOK 314, AT PAGE 242, ORNC.
35' WIDE NOW-EXCLUSIVE STREET EASEMENT PER DOC. No. 65-08974, BOOK 608, AT PAGE 628, ORNC.
ACCESS, SIGN, AND LANDSCAPE EASEMENT PER 2009-0019864 (SEE DETAIL 'B' SHEET 3)
15' WIDE TRIPUD EASEMENT PER BOOK 423, AT PAGE 285, ORNC.
15' WIDE TRIPUD EASEMENT PER BOOK 423, AT PAGE 285, ORNC.
80' WIDE ROAD & UTILITY EASEMENT PER DOC. No. 97-002491 & 97-002488 IN FAVOR OF THE TOWN OF TRUCKEE (WIDTH VARIES)
IRREVOCABLE OFFER OF ROAD AND PEDESTRIAN PURPOSES AND TRUCKEE (WIDTH VARIES)
FOUND 3/4" REBAR W/ CAP PLUS 4976(1)
W 1/4 CORNER SECTION 11 T17N R16E MOUND OF STONE(1)(4)
N57°40'54"E 696.96'
125' WIDE GENERAL PLANNED POWER CO. PAPER EASEMENT PER BOOK 314, AT PAGE 242, ORNC.
35' WIDE NOW-EXCLUSIVE STREET EASEMENT PER DOC. No. 65-08974, BOOK 608, AT PAGE 628, ORNC.
ACCESS, SIGN, AND LANDSCAPE EASEMENT PER 2009-0019864 (SEE DETAIL 'B' SHEET 3)
15' WIDE TRIPUD EASEMENT PER BOOK 423, AT PAGE 285, ORNC.
15' WIDE TRIPUD EASEMENT PER BOOK 423, AT PAGE 285, ORNC.
80' WIDE ROAD & UTILITY EASEMENT PER DOC. No. 97-002491 & 97-002488 IN FAVOR OF THE TOWN OF TRUCKEE (WIDTH VARIES)
IRREVOCABLE OFFER OF ROAD AND PEDESTRIAN PURPOSES AND TRUCKEE (WIDTH VARIES)



LINE TABLE

LINE #	DIRECTION	LENGTH
L1	N64°20'27"W	33.43
L2	N57°40'54"E	15.33
L3	N32°19'06"W	21.00
L4	N38°46'21"W	40.26
L5	N67°25'31"W	40.70
L6	N107°52'E	43.24
L7	N75°14'E	16.76
L8	N77°10'59"W	20.00
L9	N64°20'10"W	21.33
L10	N103°32'E	76.28
L11	N37°40'54"E	41.00
L12	N37°40'54"E	50.00
L13	N37°40'54"E	19.90
L14	N37°40'54"E	32.29
L15	N37°40'54"E	32.29
L16	N37°40'54"E	32.29
L17	N37°40'54"E	32.29
L18	N37°40'54"E	32.29
L19	N37°40'54"E	32.29
L20	N37°40'54"E	32.29

CURVE TABLE

CURVE #	DELTA	LENGTH	RADIUS	CHORD	DISTANCE
C1	207°27'	20.02	540.00	N69°32'50"E	20.02'
C2	44°40'54"	24.95	32.00	N05°02'19"W	24.33'
C3	71°21'49"	18.68	15.00	N79°58'39"E	17.50'
C4	132°3'09"	27.10	116.00	N60°59'19"E	27.04'
C5	142°6'53"	24.46	97.00	N57°06'43"W	24.40'
C6	231°3'03"	9.32	23.00	N52°43'38"W	9.28'
C7	200°5'50"	8.07	23.00	N05°20'44"W	8.03'
C8	15°59'03"	114.66	411.00	N12°41'42"E	114.29'
C9	85°6'31"	72.62	465.31	N07°43'46"E	72.55'
C10	10°31'26"	89.08	485.00	N83°25'31"W	14.55'
C11	2°31'33"	14.59	330.00	N83°25'31"W	14.55'
C12	36°57'02"	20.64	32.00	N45°51'17"W	20.28'
C13	53°54'37"	28.95	31.83	N39°39'05"E	28.85'
C14	01°52'4"	82.19	18348.92	N103°91'4"E	82.19'
C15	31°35'35"	188.17	343.08	N28°42'40"E	188.79'
C16	2°42'04"	16.17	343.08	N14°5'55"E	16.79'
C17	47°42'17"	26.51	31.83	N20°34'15"E	25.75'
C18	85°02'4"	4.91	31.83	S40°00'27"W	4.91'
C19	36°52'24"	21.60	31.83	S16°09'53"W	21.18'
C20	48°12'21"	20.88	24.83	S68°25'50"W	20.28'
C21	156°35'21"	7.40	181.81	S65°15'05"W	7.40'
C22	83°38'34"	27.44	181.81	S69°54'05"W	27.42'
C23	184°33'09"	107.81	330.00	S85°57'08"W	107.34'
C24	21°50'00"	205.77	540.00	N20°33'57"E	204.53'
C25	44°40'54"	24.95	32.00	N05°02'19"W	24.33'
C26	07°56'55"	87.58	2574.92	N10°36'19"E	87.57'
C27	09°11'44"	52.84	329.24	S76°58'39"W	52.78'
C28	32°18'58"	18.05	32.00	N80°29'38"W	17.81'

STATE OF CALIFORNIA
 DOC. No. 2015-0004452

FINAL MAP No. 05-082
PIONEER EAST BUSINESS PARK
SUBDIVISION OF RESULTANT PARCEL 1
 DOC. No. 2004-0001488, ORNC

SECTION 11, T.17N., R.16E., M.D.M.
TOWN OF TRUCKEE
 NEVADA COUNTY, CALIFORNIA
 SCALE: 1"=60' OCTOBER, 2025

PSOMAS
 1410 Regency Ridge Drive, Suite 300
 Reno, NV 89505
 (775) 786-8422

SEE SHEET 3 FOR NOTES & LEGEND

RAJAL DATA IS PROVIDED FOR NOW-TAKEN CHANGES IN THE MAP AND/OR TABLE BELOW:

RAJAL IN
 N74°23'03"W
 N86°42'51"E
 S45°34'42"E
 S54°24'45"E
 S22°32'01"W
 N25°43'13"W
 N24°25'12"W
 N13°24'27"W

RAJAL OUT
 N74°23'03"W
 N86°42'51"E
 S45°34'42"E
 S54°24'45"E
 S22°32'01"W
 N25°43'13"W
 N24°25'12"W
 N13°24'27"W

