

Property Highlights

50 Wise Court, Richmond Hill, Bryan County, GA

Gross Area: 2.14 Acres

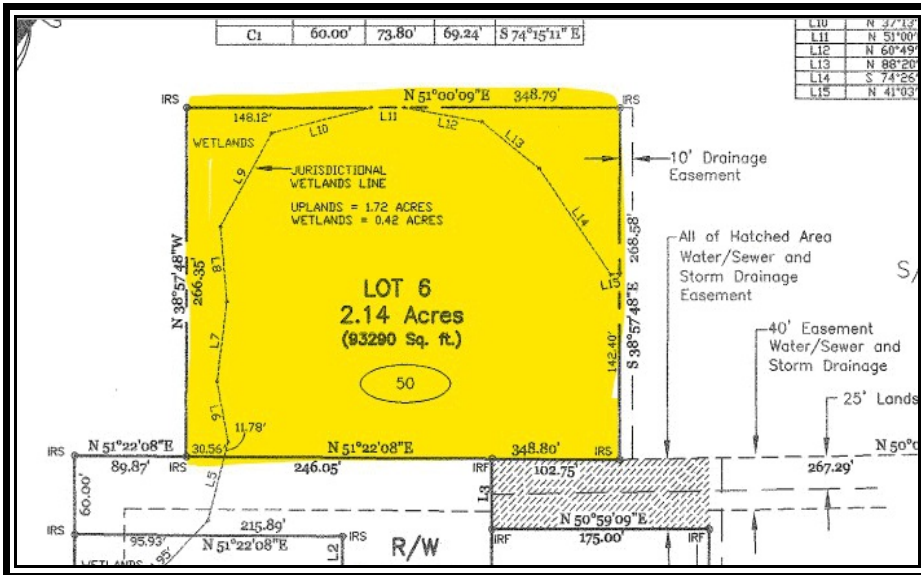
Upland Area: 2.00 Acres (See Exhibit on Next Page)

Zoning: C-1, General Commercial District

Access: Existing Access from Wise Court

Utilities: All Available - Public Water/Sewer

Site Feature: Cleared Site



Location Features

Located just off of US Highway 17 one-half mile west of Interstate 95

Desirable for Proximity/Access to:

Major Intestates and Highways: I-95, US Highway 17, I-16

Savannah, Richmond Hill, Pooler, Brunswick, Hinesville

30 Miles to Hyundai MetaPlant

Desirable Location for Flex Space Buildings with Yard Area





50 Wise Court