

FOR SALE PEARL DISTRICT
OPPORTUNITY

216 NW 15TH AVENUE
PORTLAND, OR 97209



Apex Real Estate Partners
415 NW 11th Ave, Portland, OR 97209
503.595.2840 / www.apexcre.com

Irfan Tahir, Director
971.346.2512
Irfan@apexcre.com

Wes Mallard
541.556.7586
Wes@apexcre.com



FOR SALE

\$850,000



Excellent creative office, retail or studio opportunity



Building size \pm 1,676 SF



Great open layout with high ceilings, kitchenette, ample storage and restroom with shower



Built in 1925 / Renovated 1999



Large skylight and oversized front windows allow for abundant natural light throughout the space



Site size \pm 1,656 SF / \pm 0.04 AC



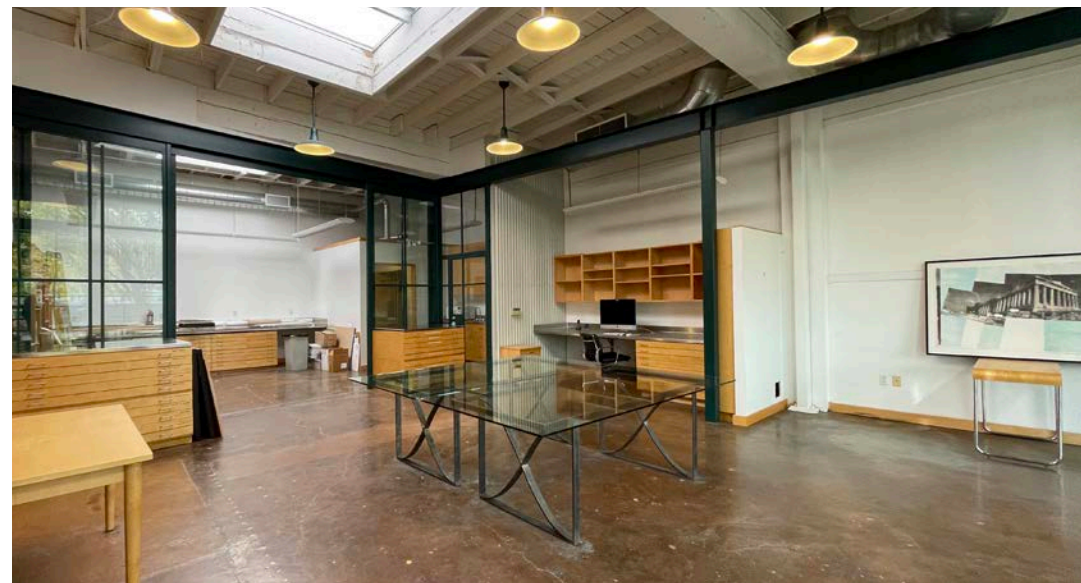
Zoning EX - Central Employment



Excellent proximity to restaurants, bars, entertainment and shopping



Owner has no basis into the property and has the ability to be flexible on structure of an acquisition



GREAT LOCATION



No warranty or representation, express or implied, is made as to the accuracy of the information contained herein, and same is submitted subject of price, rental or other conditions, withdrawal without notice, and to any special listing condition imposed by our principals.