

# MEYERLAND PROFESSIONAL PLAZA



## OFFICE SPACE

**ANNIE TARWATER**

713.668.2369

[atarwater@mcmmanagement.com](mailto:atarwater@mcmmanagement.com)

**DAN MEYER**

713.668.2369

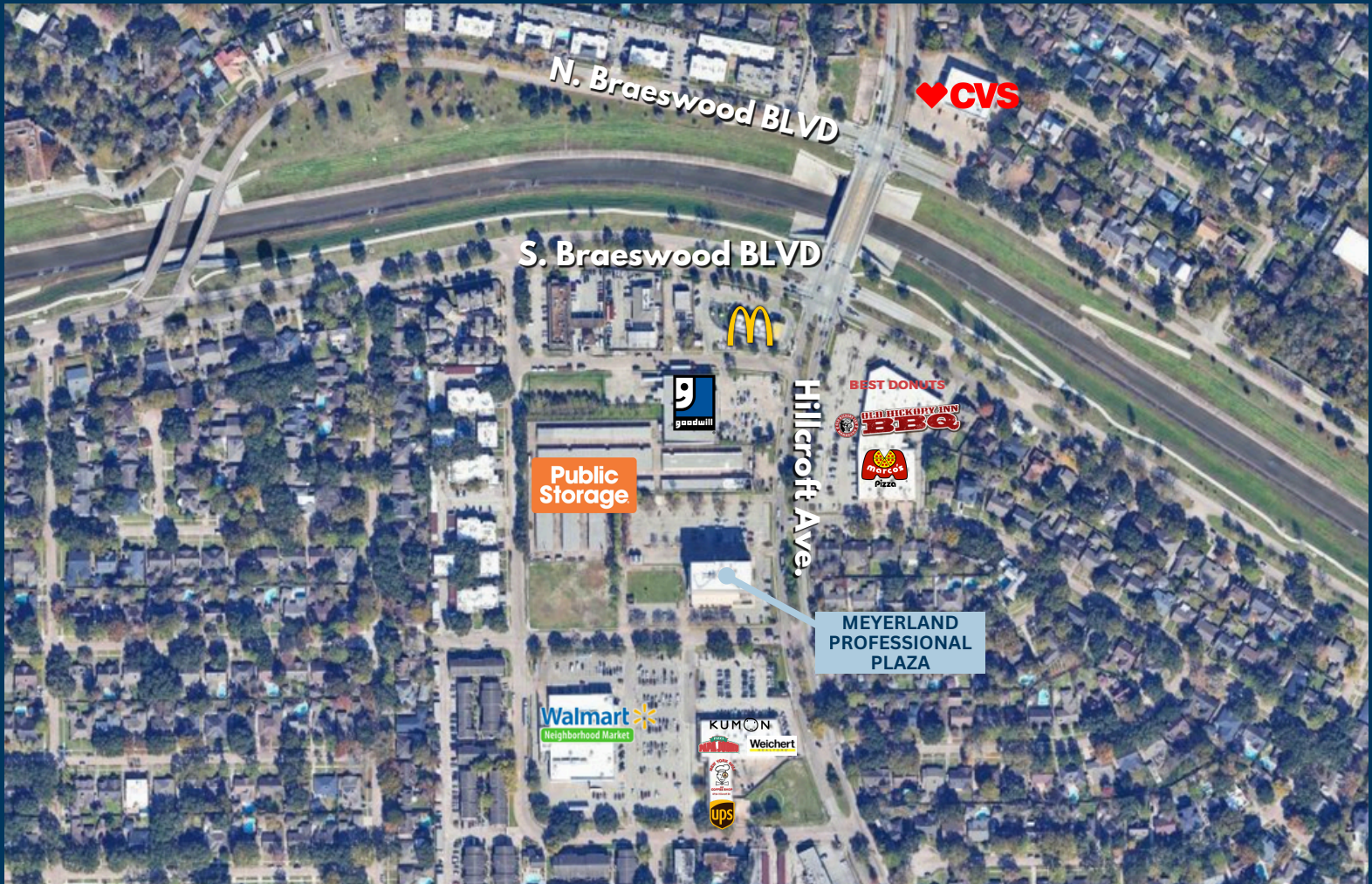
[danmeyer@mcmmanagement.com](mailto:danmeyer@mcmmanagement.com)



9660 HILLCROFT AVE.,  
HOUSTON, TX 77096

# MEYERLAND PROFESSIONAL PLAZA

9660 HILLCROFT AVE., HOUSTON, TX 77096



## LOCATION HIGHLIGHTS

MEYERLAND PROFESSIONAL PLAZA IS STRATEGICALLY LOCATED AT THE INTERSECTION OF HILLCROFT AND BRAESWOOD, OFFERING PRIME VISIBILITY AND ACCESSIBILITY FOR PROFESSIONALS AND THEIR BUSINESSES. SURROUNDED BY A THRIVING COMMUNITY, THE PROPERTY PROVIDES QUICK ACCESS TO LOOP 610 AND IS IN CLOSE PROXIMITY TO MEYERLAND, BELLAIRE, WESTBURY, AND OTHER KEY HOUSTON NEIGHBORHOODS.

**ANNIE TARWATER**

713.668.2369  
atarwater@mcmmanagement.com

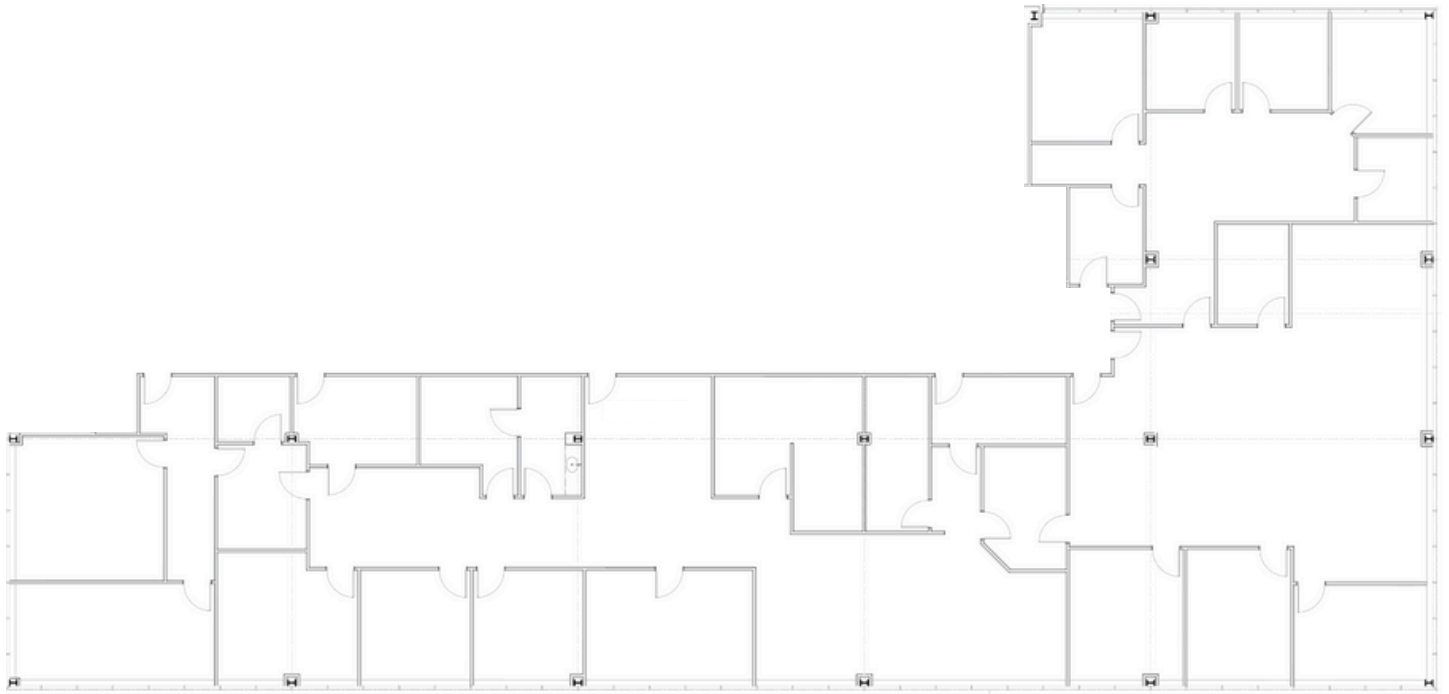
**DAN MEYER**

713.668.2369  
danmeyer@mcmmanagement.com



# MEYERLAND PROFESSIONAL PLAZA

**SUITE 400**  
600-12,197 SF



**ANNIE TARWATER**

713.668.2369

atarwater@mcmmanagement.com

**DAN MEYER**

713.668.2369

danmeyer@mcmmanagement.com

9660 HILLCROFT AVE.,  
HOUSTON, TX 77096