

OCEAN CITY NEW INLINE DEVELOPMENT AND PAD OPPORTUNITY

94th St. & Coastal Hwy | Ocean City, MD 21146

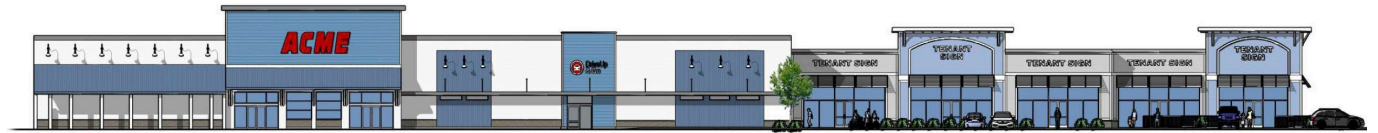


Availability

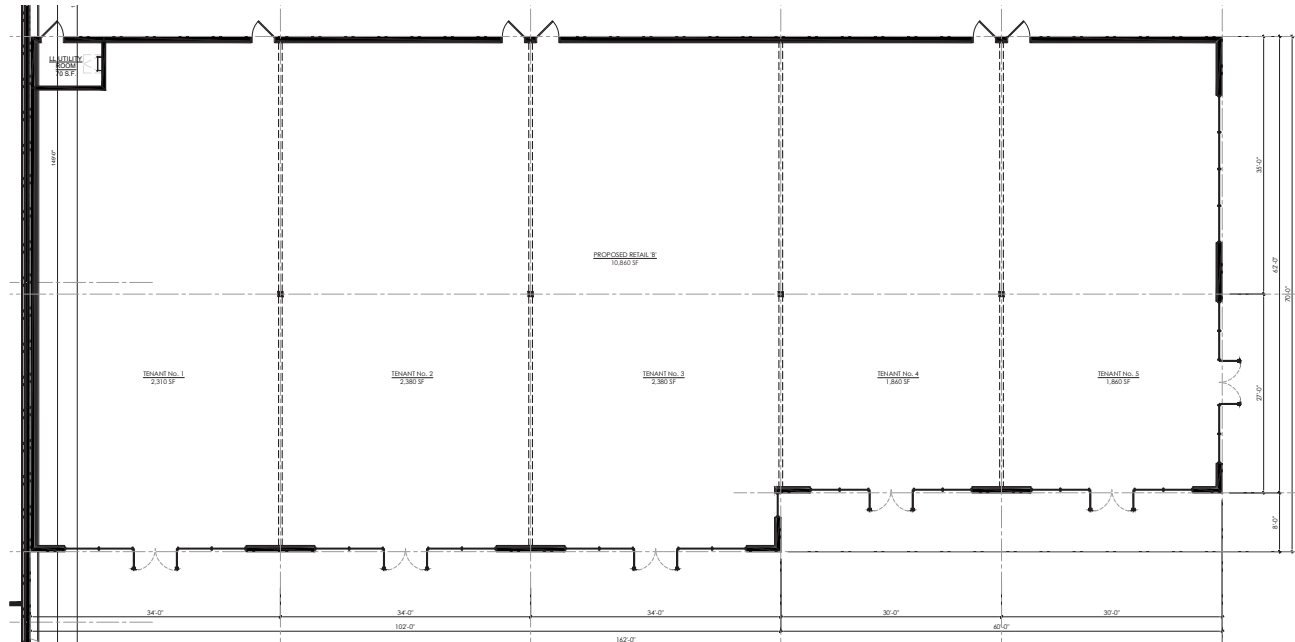
- ▶ Inline spaces +/- 1,860 - 10,790 SF
- ▶ +/- 2,500 SF Future Pad with Drive-Thru

Center Features

- ▶ Newly constructed grocery anchored retail project coming soon in the heart of Ocean City
- ▶ Shopping center centrally located at 94th Street at a lit intersection at the beginning of condominium row
- ▶ Multiple access points from Coastal Highway and 94th St.
- ▶ One of two grocery stores within Ocean City limits that service strong year round and summer tourist populations
- ▶ New construction to be delivered Spring 2027



Inline Floorplan



LEASING CONTACT



KELSI HOLMAN
Assistant Vice President
Retail Leasing

phone: 443.921.4344

email: kholman@crcrealty.com

AREA/DEMOGRAPHICS

94th St. & Coastal Hwy | Ocean City, MD 21146



Demographics

ZONING

SC-1

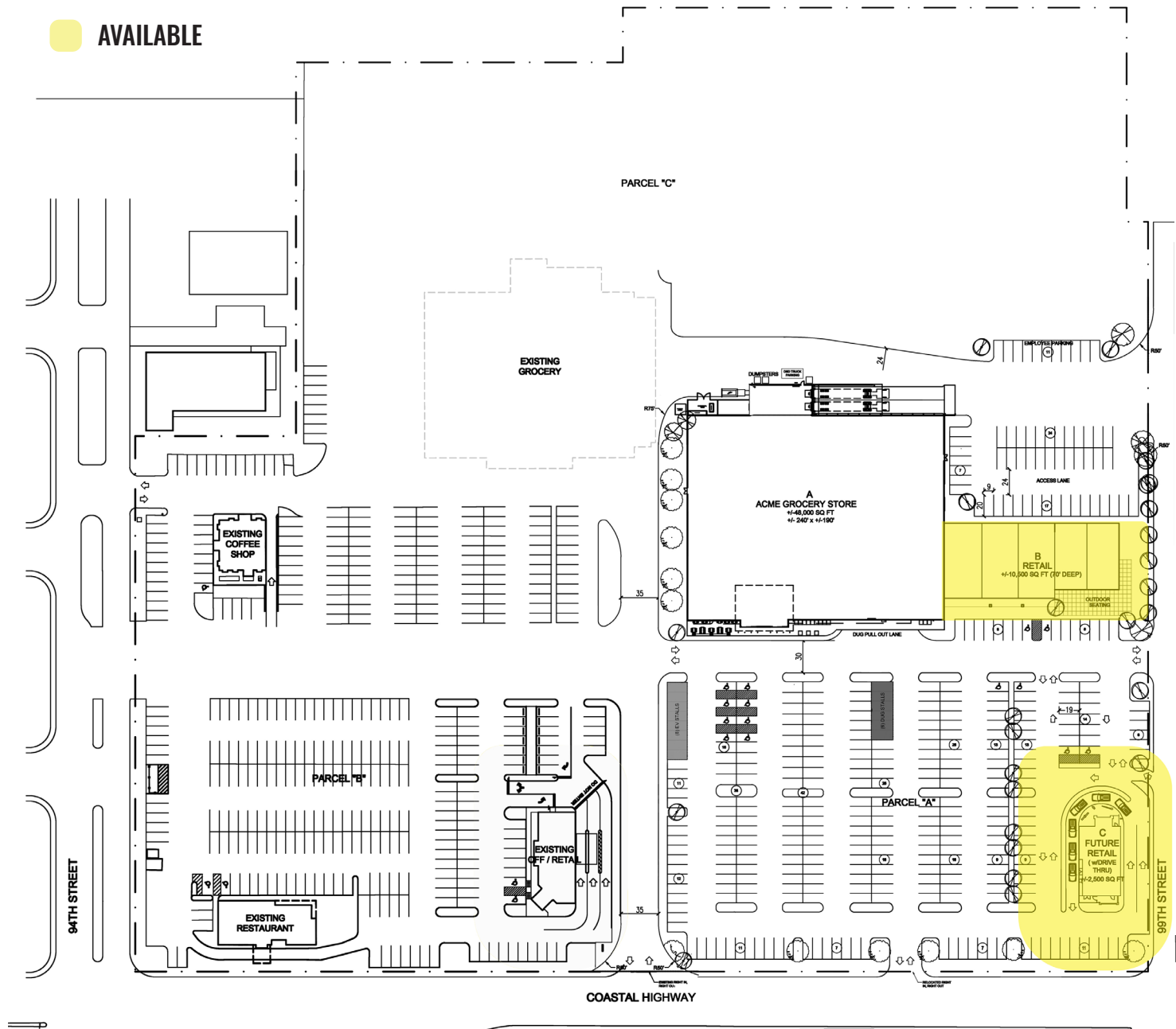
ANNUAL VISITORS

Up to 8 million

AVG. WEEKEND POPULATION ESTIMATES

320-345K vacationers during season

 AVAILABLE



LEASING CONTACT



KELSI HOLMAN
Assistant Vice President
Retail Leasing

phone: 443.921.4344

email: kholman@crcrealty.com

AREA/DEMOGRAPHICS

94th St. & Coastal Hwy | Ocean City, MD 21146



NOTABLE AND NEARBY TENANTS



ACME

FAMILY DOLLAR



CVS pharmacy

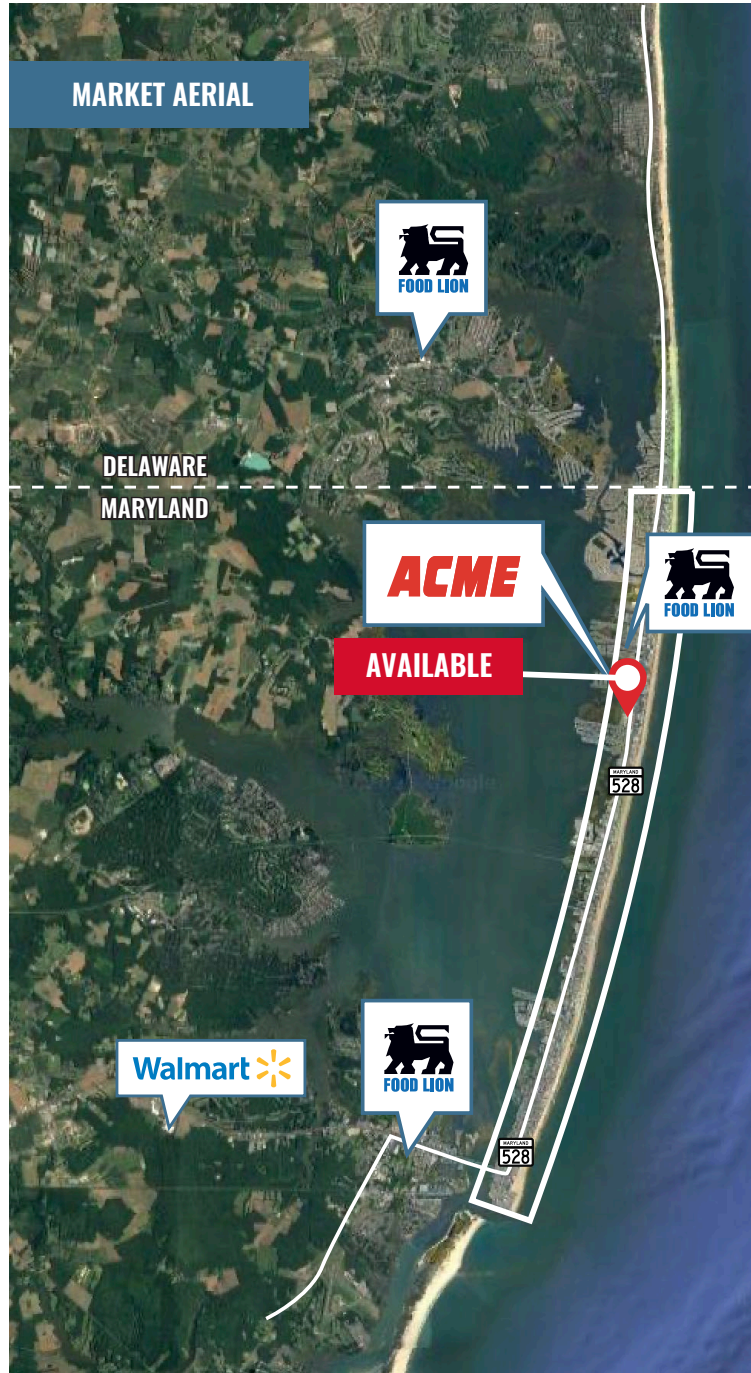


Walmart  **DUNKIN'**

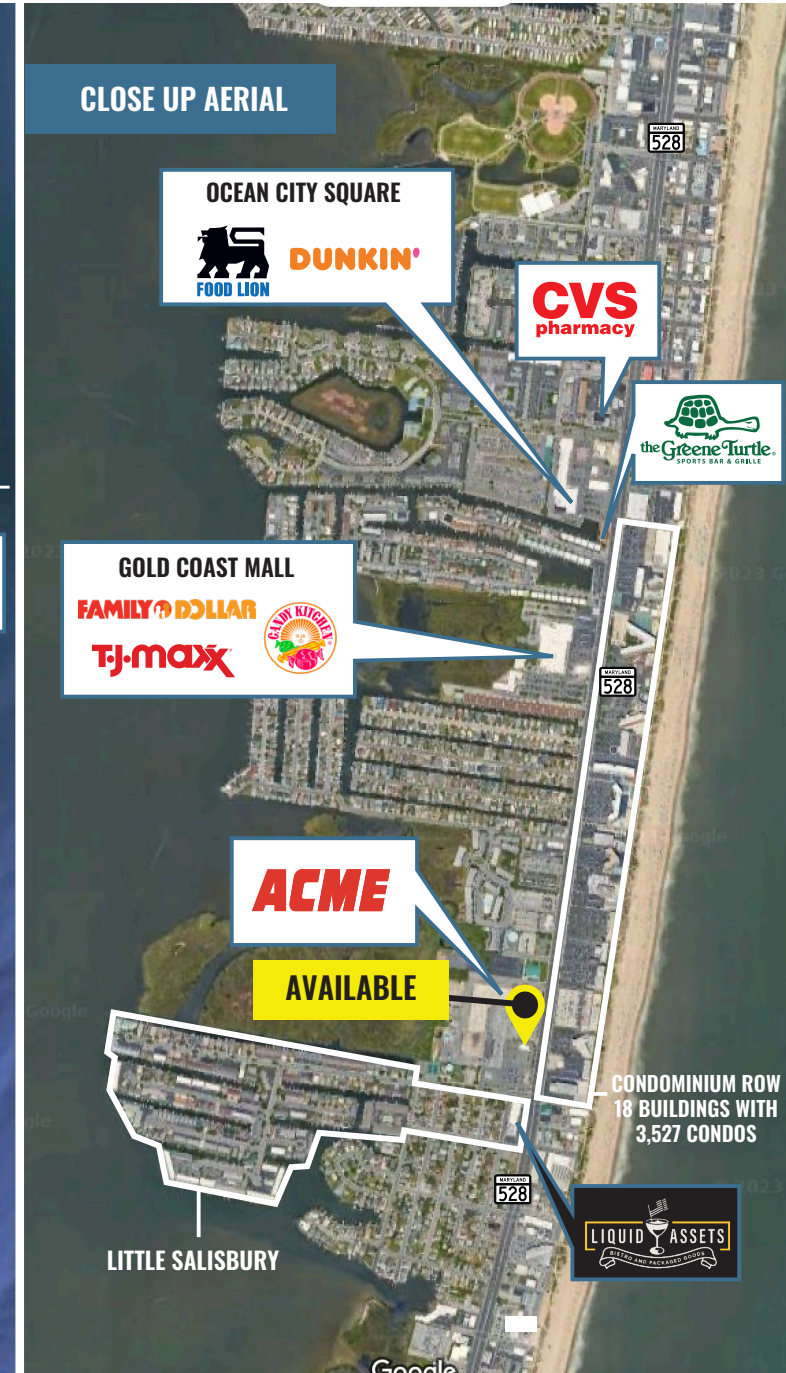


T.J. maxx

MARKET AERIAL



CLOSE UP AERIAL



LEASING CONTACT



KELSI HOLMAN
Assistant Vice President
Retail Leasing

phone: 443.921.4344

email: kholman@crcrealty.com