

FOR LEASE | 1,096 SF

CBRE



645 YONGE
STREET

BRIAN PORTER*
Senior Vice President
416 847 3242
Brian.Porter@cbre.com

JENNIFER MILLAR*
Associate Vice President
647 328 8859
Jennifer.Millar@cbre.com

*Sales Representative

CBRE LIMITED, Real Estate Brokerage
145 King Street West, Suite 1100, Toronto, ON | M5H 1J8 | www.cbre.ca

Property Details

645 YONGE
STREET

SIZE 1,096 SF

- 2nd Floor: 515 SF
- 3rd Floor: 581 SF
- Floors 2 and 3 must be leased together

AVAILABILITY Immediate

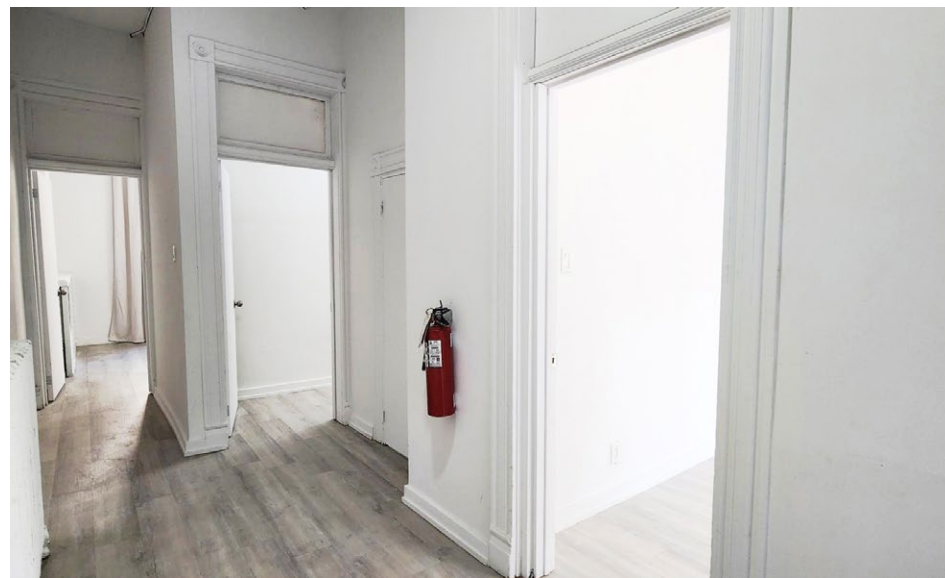
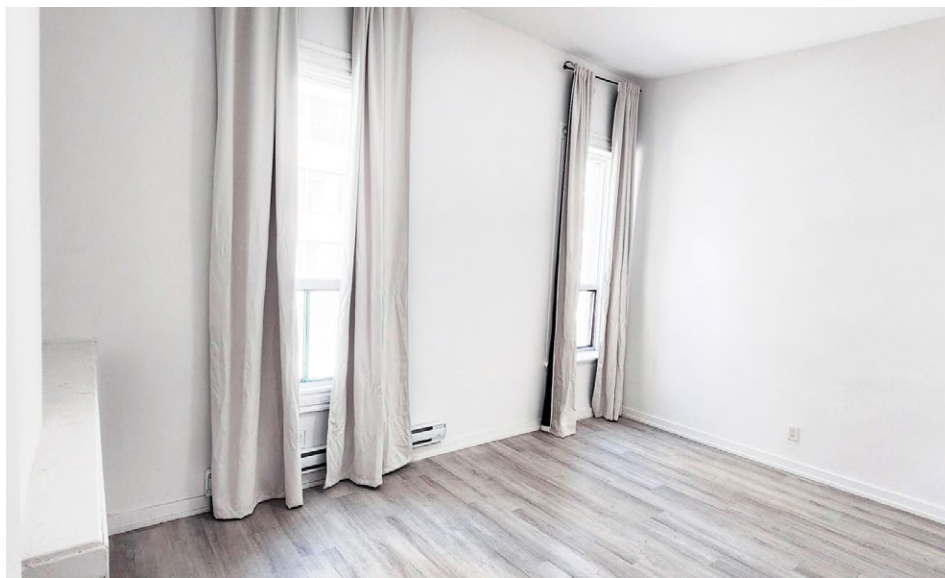
ASKING RENT Contact Listing Agents

-
- Built out with 3 offices, a storage room, kitchen, and washroom
 - Potential rooftop patio available on the 2nd floor
 - 1 parking space can be made available
 - Close proximity to neighbourhood amenities and public transit (Bloor - Yonge and Wellesley Subway Stations)

645 YONGE STREET

Property Photos

CBRE



645 YONGE STREET

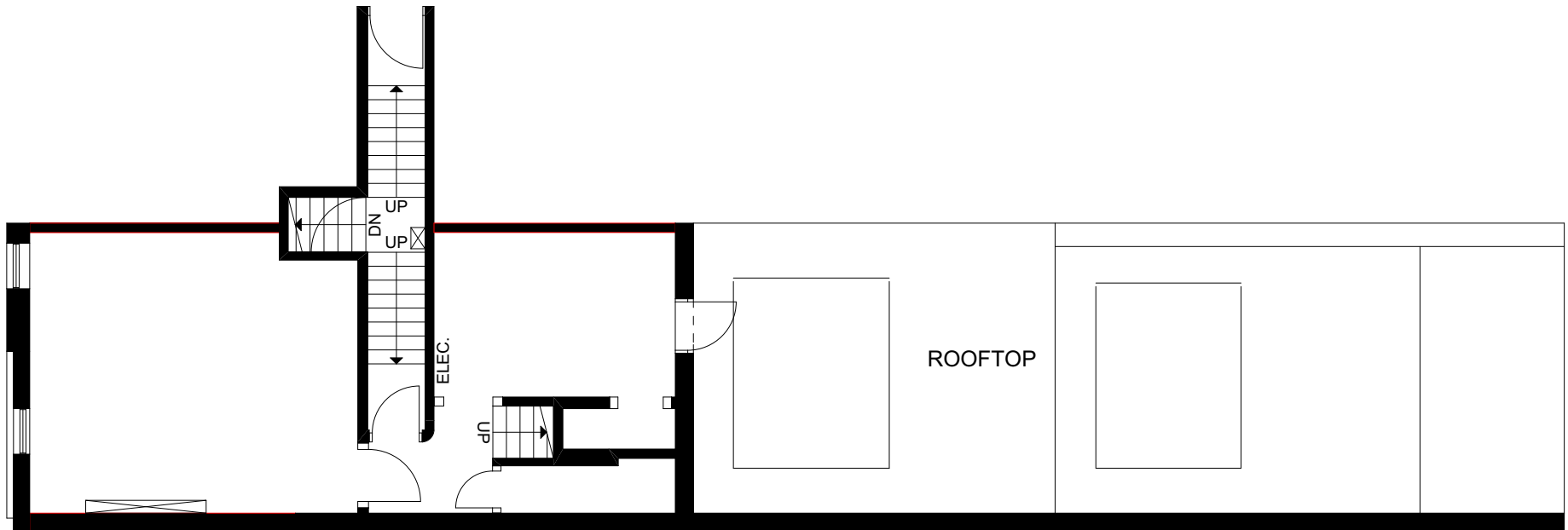
Property Photos

CBRE



Floor Plan

2ND FLOOR - 515 SQ. FT.

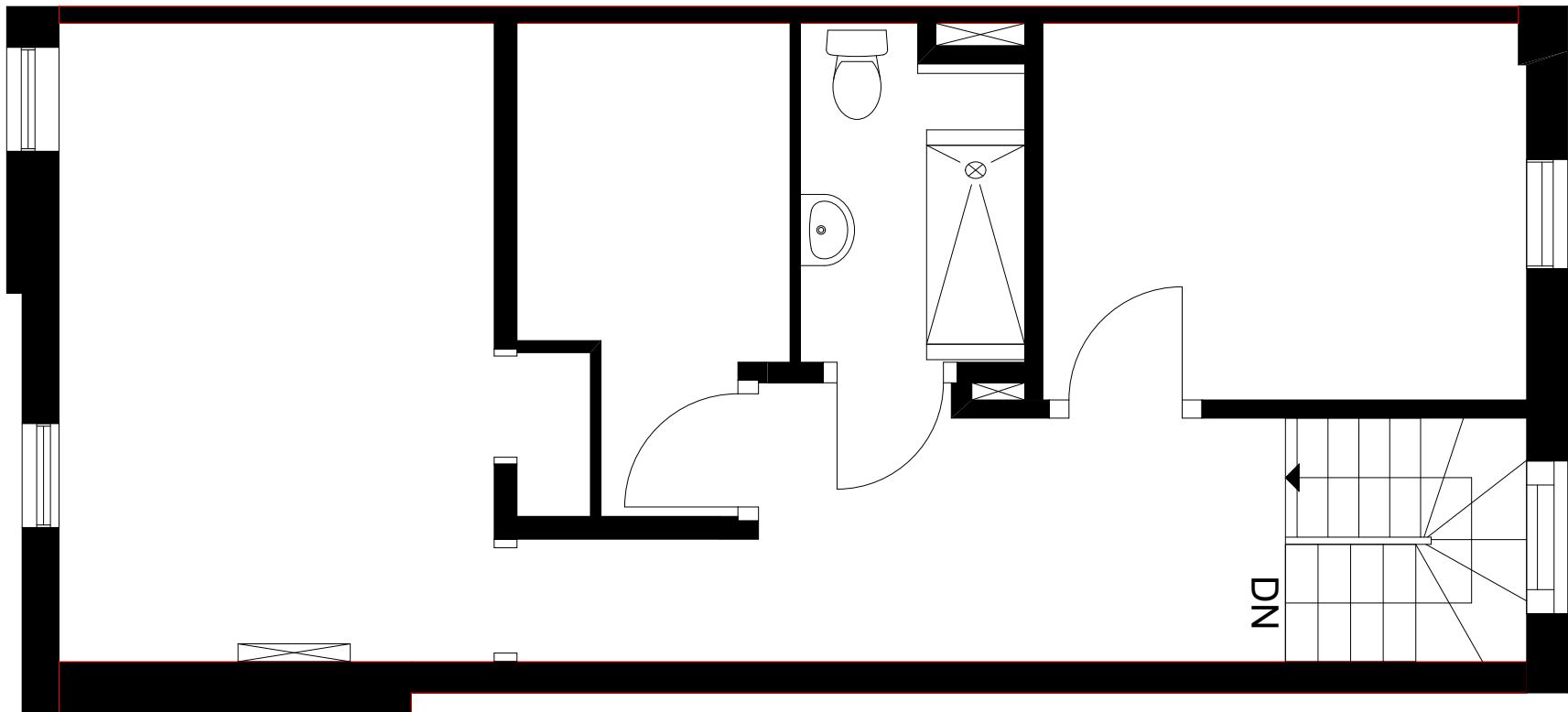


645 YONGE STREET

Floor Plan

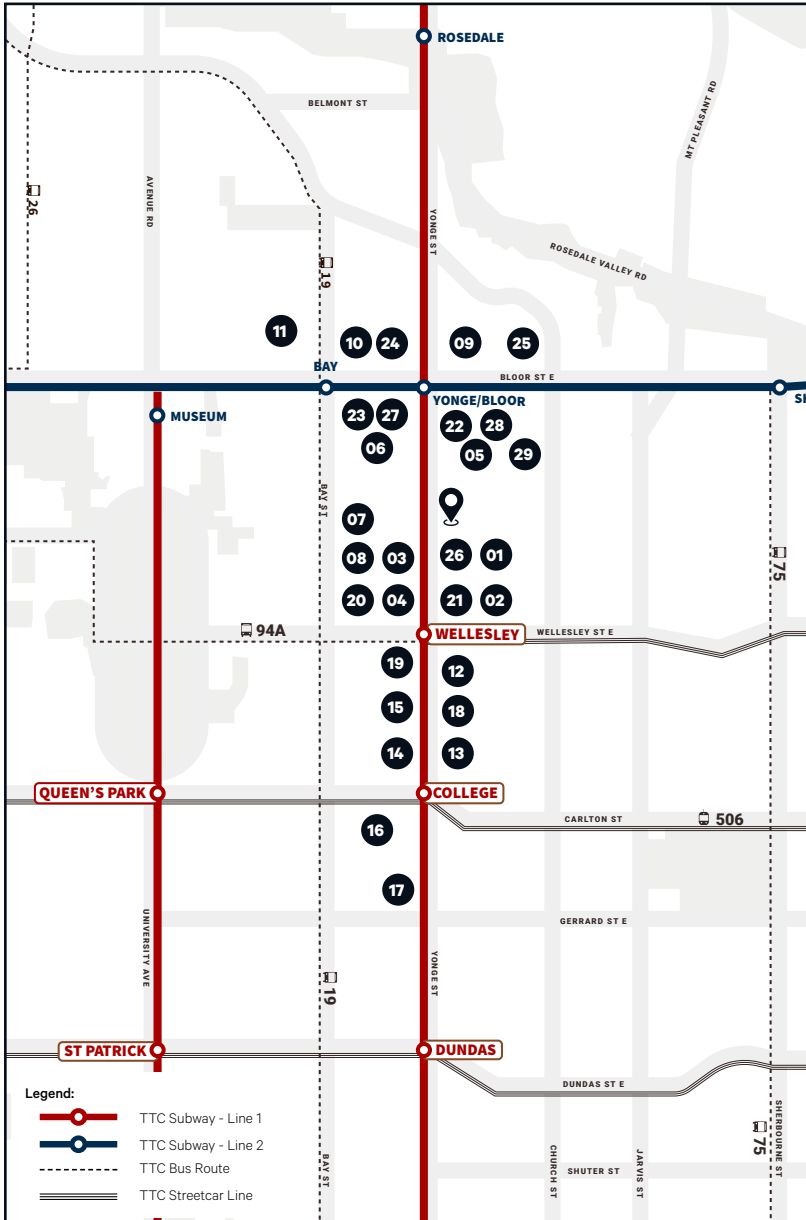
3RD FLOOR - 581 SQ. FT.

CBRE



645 YONGE STREET

Amenity Map



Food & Drink

- | | | |
|---|--|--|
| <p>01. Kothur Indian Cuisine
SHINYI Handmade Dumplings
The Bar Jokbal Night Market
Artful Dodger Pub
Ehwa Restaurant
Marathon Cafe Downtown
Piedmont Coffee Bar</p> <p>02. Miss Fu In Chengdu
Fresh Pasta To Go
Bumpkin's Restaurant & Lounge
Storm Crow Manor
Pho Anh Vu Toronto
Good Earth Coffeehouse</p> <p>03. Cabano's Cheeseburgers
The Diner's Corner
Avelo Restaurant
A BBQ House
Sansotei Ramen
Butter Chicken Roti
Ethiopian House</p> <p>04. Lao Lao Bar
Bar Volo
Bao House
Not Just Noodles
ramen RAIJIN</p> | <p>05. Constantine Toronto
Toro Toro Sushi and Poke
NAAN KABOB
Nani's Gelato
Chick-fil-A
Mos Mos Coffee
Cafe Landwer</p> <p>06. Mogouyan Hand Pulled Noodle
Earls Kitchen + Bar
Eataly Toronto
Scaccia</p> <p>07. Okonomi House Restaurant
Sushi Umi - Toronto
Slab Burgers The Slab Pizza
Starbucks
Sushi On Bay</p> <p>08. Petit Potato
Sol Pizza
Tokyo Sushi
Pizza Nova
Shawarma Q</p> <p>09. Starbucks
Subway
Tim Hortons
Salad Days</p> | <p>10. PLANTA
The Pilot
Kathmandu Restaurant
Miznon
Starbucks
The One Caviar Bar</p> <p>11. Hazukido (Yorkville)
Pi Co. Pizza Bar
The MoMo House
Trattoria Nervosa</p> <p>12. Tim Hortons
Egg Club Wellesley
HEYTEA</p> <p>13. Seoul Gamjatang
The Bistro
Pizza Pizza</p> <p>14. Edo Japan
Hoops Sports Bar & Grill
W Burger Bar
McDonald's
Souper Hot Pot</p> <p>15. 555 Boat Noodles
Darvish Restaurant
Kream Dessert
Bone Soup Malatang</p> |
|---|--|--|

Shopping

- | | |
|--|--|
| <p>16. Winners
Metro
Farm Boy
Dollarama
The Brick
LCBO</p> <p>17. IKEA Toronto Downtown
Aura Concourse Shopping Mall
Marshalls & HomeSense</p> <p>18. Shoppers Drug Mart
Bulk Barn</p> <p>19. Galleria Supermarket Express</p> | <p>19. Galleria Supermarket Express</p> <p>20. Rabba Fine Foods
Shoppers Drug Mart</p> <p>21. Rabba Fine Foods</p> <p>22. H Mart</p> <p>23. Independent City Market Bloor
Manulife Centre</p> <p>24. Holt Renfrew Centre
Aritzia
Alo</p> <p>25. The Market by Longos</p> |
|--|--|

Fitness

- | |
|--|
| <p>26. Hone Fitness
Innovative Fitness at The Ivy</p> <p>27. Goodlife Fitness</p> <p>28. AVANT Yorkville
SHINE FIT Dance Fitness</p> <p>29. Lyft Fitness</p> |
|--|

645 YONGE STREET

BRIAN PORTER*

Senior Vice President
416 847 3242
Brian.Porter@cbre.com

JENNIFER MILLAR*

Associate Vice President
647 328 8859
Jennifer.Millar@cbre.com

CBRE LIMITED, Real Estate Brokerage

145 King Street West, Suite 1100
Toronto, ON | M5H 1J8
www.cbre.ca

CBRE

*Sales Representative

This disclaimer shall apply to CBRE Limited, Real Estate Brokerage, and to all other divisions of the Corporation; to include all employees and independent contractors ("CBRE"). The information set out herein, including, without limitation, any projections, images, opinions, assumptions and estimates obtained from third parties (the "Information") has not been verified by CBRE, and CBRE does not represent, warrant or guarantee the accuracy, correctness and completeness of the Information. CBRE does not accept or assume any responsibility or liability, direct or consequential, for the Information or the recipient's reliance upon the Information. The recipient of the Information should take such steps as the recipient may deem necessary to verify the Information prior to placing any reliance upon the Information. The Information may change and any property described in the Information may be withdrawn from the market at any time without notice or obligation to the recipient from CBRE. CBRE and the CBRE logo are the service marks of CBRE Limited and/or its affiliated or related companies in other countries. All other marks displayed on this document are the property of their respective owners. All Rights Reserved.