

Medical Office Space

330 N Madison

Joliet, Illinois 60435

PROPERTY DETAILS

- Medical Office Space available:
 - Suite L15 855 RSF
 - Suite L12 1,075 RSF
 - Suite L11 900 RSF
 - Suite 303 1,300 RSF
 - Suite 300 850 RSF
- Fully built-out medical suites with plumbing
- Ample, convenient parking (5.02/1,000)
- Located across from Ascension Saint Joseph Hospital-Joliet
- Synergistic mix of medical tenant specialties including cardiology, dermatology, family medicine, gastroenterology, audiology, internal medicine, ophthalmology, ENT, MRI, lab services.
- Under new ownership

[Property Website](#)

Contact

Brian Edgerton
+1 630 693 0671
bedgerton@hiffman.com

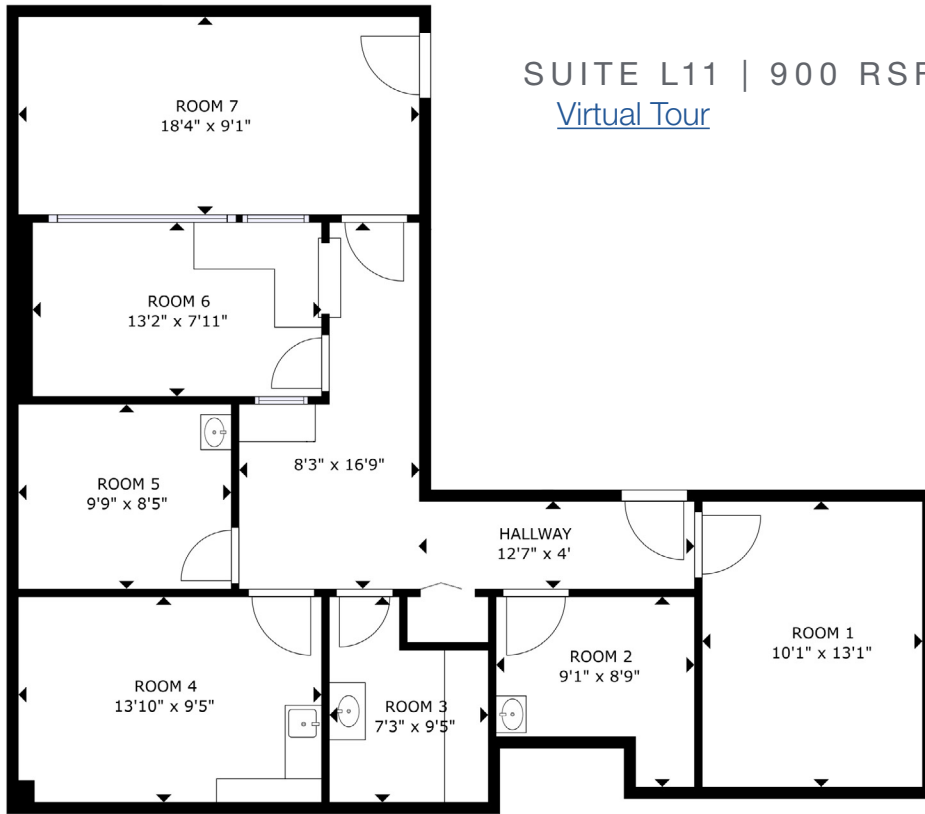
One Oakbrook Terrace
Suite 600
Oakbrook Terrace, Illinois 60181
+1 630 932 1234

hiffman.com

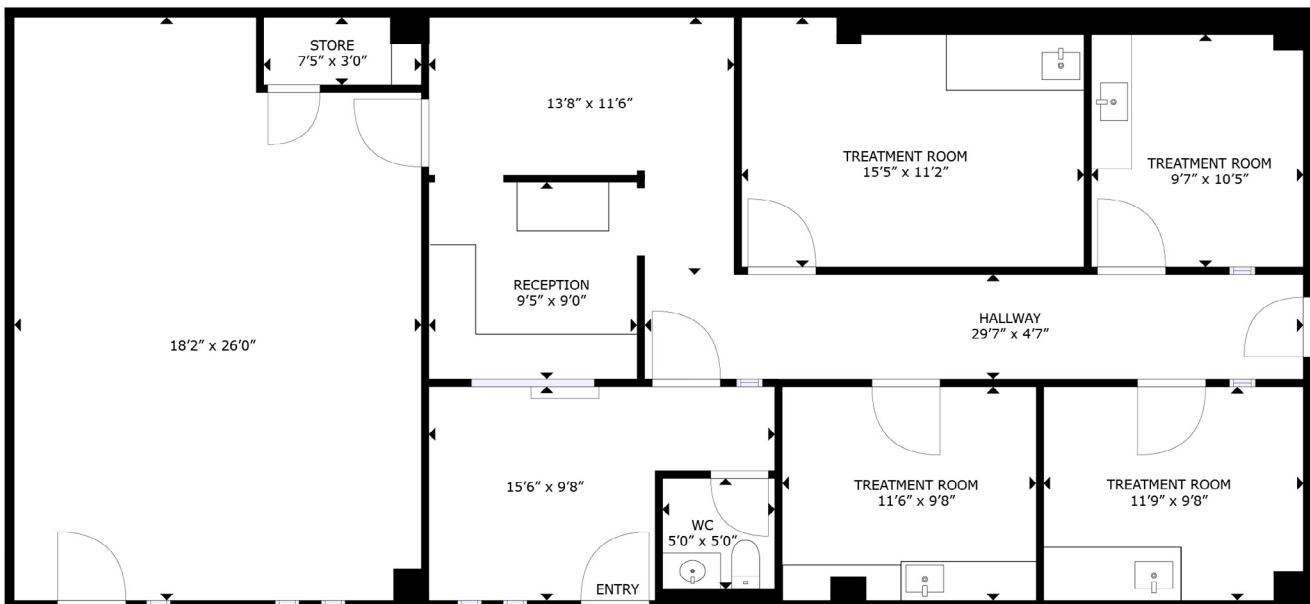
Owned and Managed by:

The logo for Welltower, with 'Well' in a large, bold, sans-serif font and 'tower' in a smaller, bold, sans-serif font below it.

SUITE L11 | 900 RSF
[Virtual Tour](#)

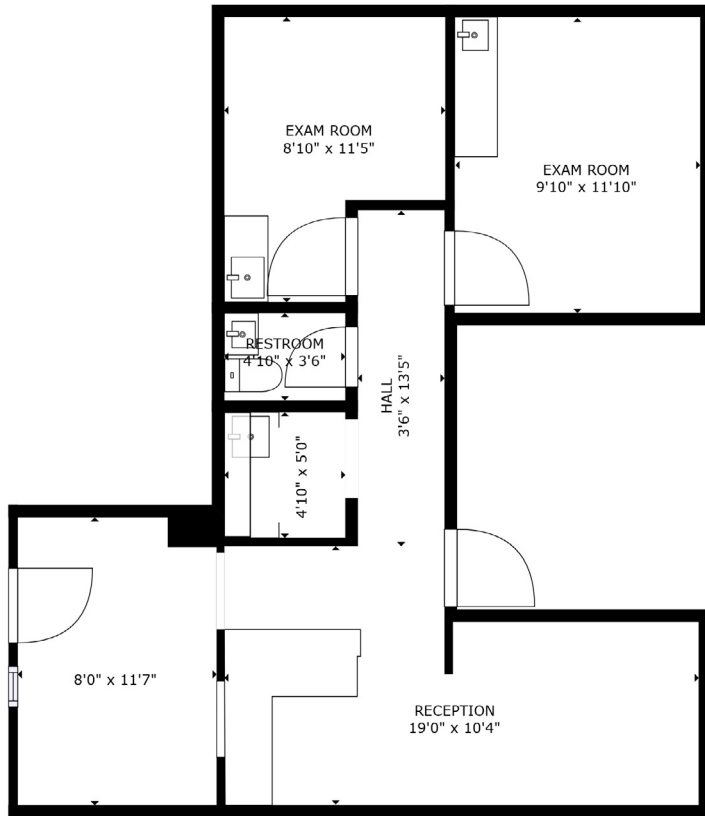


SUITE L12 | 1,075 RSF
[Virtual Tour](#)



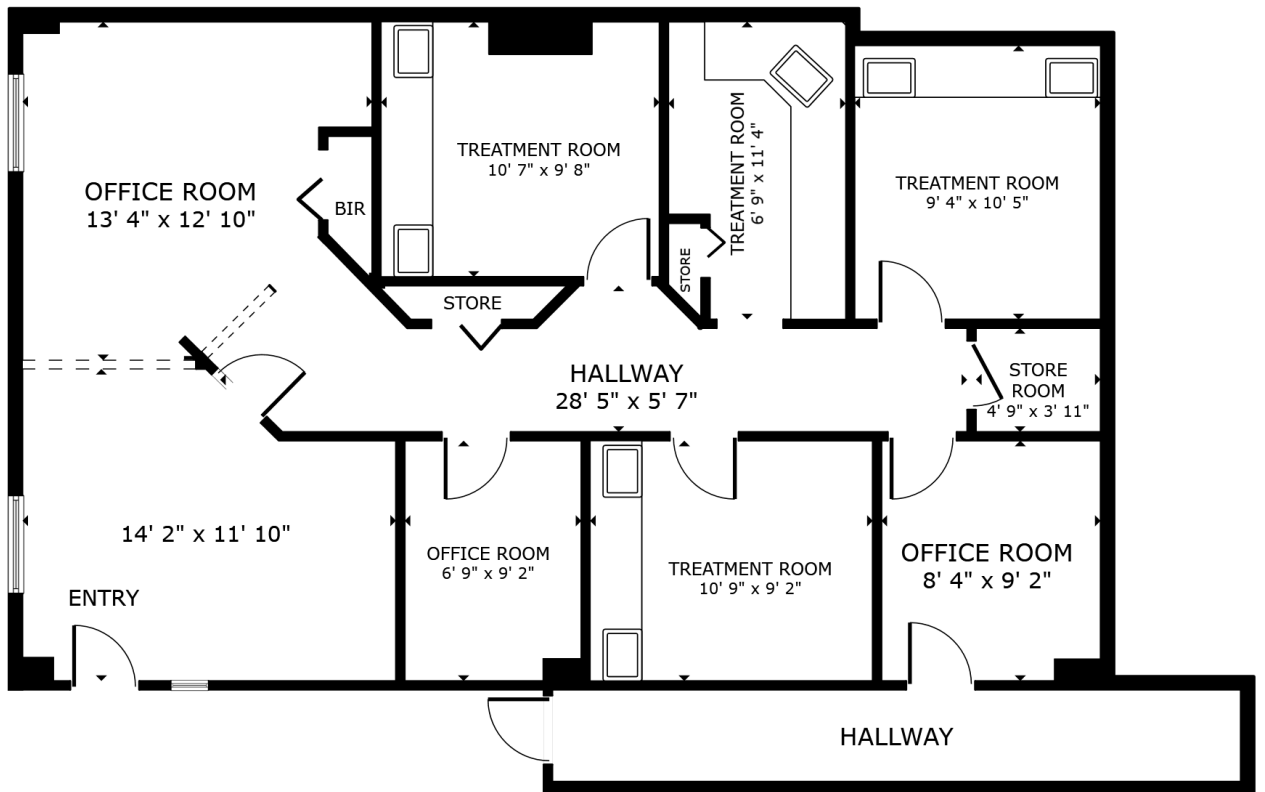
SUITE L15 | 855 RSF

[Virtual Tour](#)



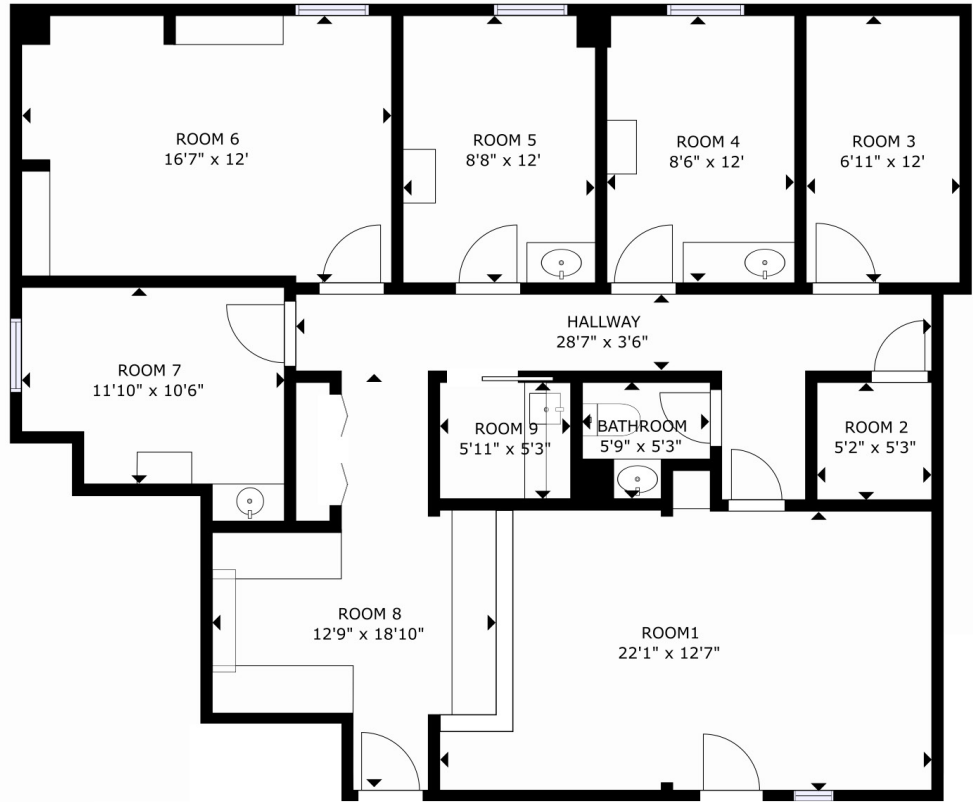
SUITE 300 | 850 RSF

[Virtual Tour](#)



SUITE 303 | 1,300 RSF

[Virtual Tour](#)



One Oakbrook Terrace
Suite 600
Oakbrook Terrace, Illinois 60181
+1 630 932 1234