

Baseline Crossings | Demisable Dental Office For Lease

2610 W Baseline Rd, Bldg B, Phoenix, AZ 85041

Property Summary

Page 1



PROPERTY DESCRIPTION

Introducing 2610 West Baseline Road, Phoenix, AZ! This demisable dental office spans approximately 4,800 SF with visibility and frontage on Baseline Rd. With ample parking, building and electronic monument signage, and end cap positioning this space is a great opportunity for any dentist looking to start a practice in Phoenix. Space can be broken down and delivered in vanilla shell or existing dental build out can be reduced as needed to serve a GP or pediatric dentist.

OFFERING SUMMARY

Lease Rate:	\$28 SF/yr (NNN)
Available:	October 1, 2025
Available SF:	1,600 - 4,800 SF
Building Size:	17,632 SF
NOI:	\$0.00

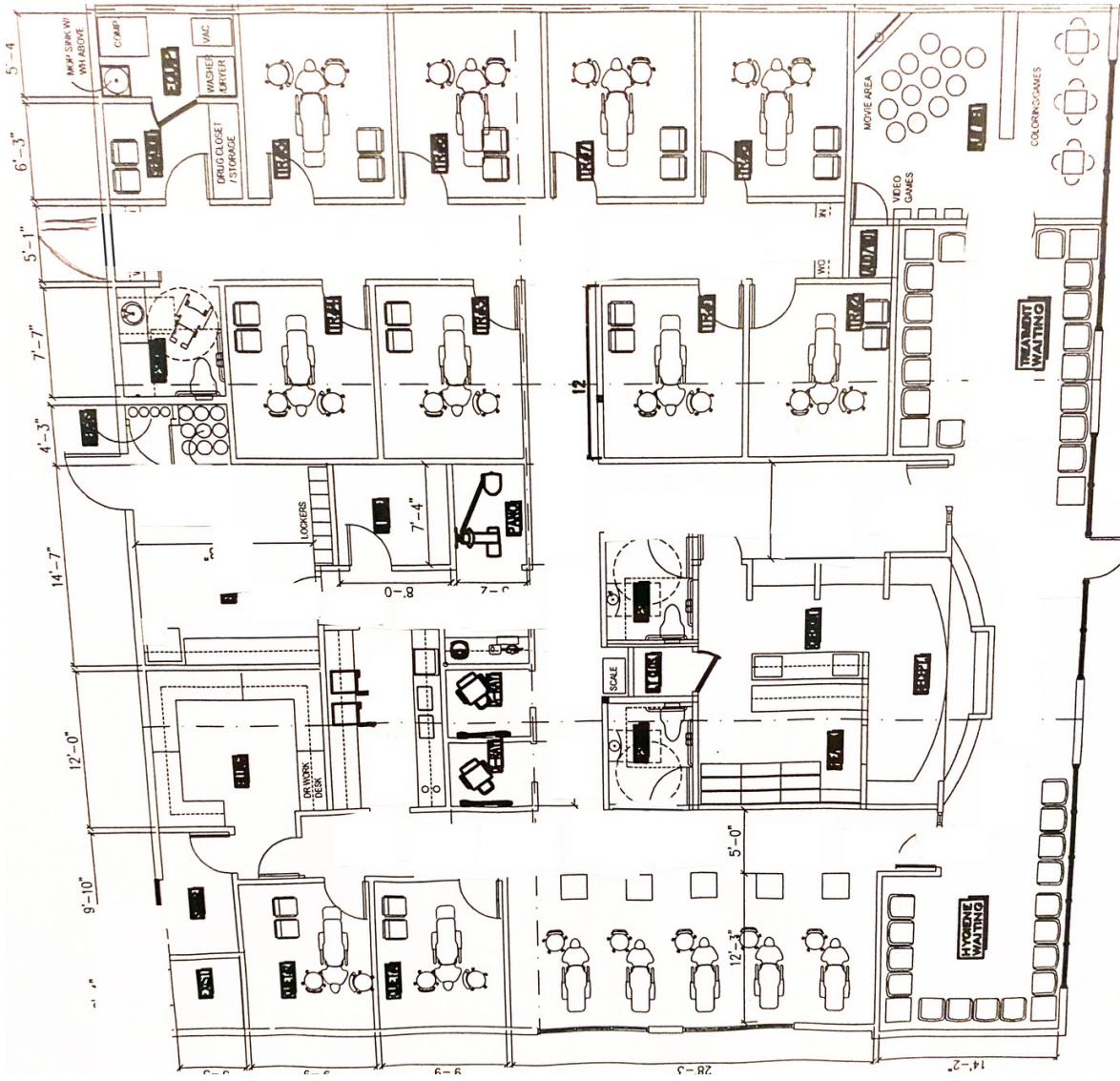
PROPERTY HIGHLIGHTS

- +/- 4,800 SF of Dental, Divisible as Needed
- 3 Spaces of +/- 1,600 SF (Contiguous up to +/- 4,800 SF)
- \$28.00 NNN
- End Cap Suite
- Former Pediatric Dental Office
- Ample Parking
- Building and Electronic Monument Signage
- C-1 Zoning
- Great Visibility and Frontage along Baseline Rd
- Orthodontia Office in the Same Building

Baseline Crossings | Built Out Dental Office For Lease

2610 W Baseline Rd, Bldg B, Suite 120, Phoenix, AZ 85041

Floor Plan



Baseline Crossings | Built Out Dental Office For Lease

2610 W Baseline Rd, Bldg B, Suite 120, Phoenix, AZ 85041

Site Details

