

# INDUSTRIAL FOR LEASE

1127 S Jason St. | Denver, CO 80223



**LEASE RATE**  
\$6,500/MO



**SPACE AVAIL.**  
4,000 SF



**ZONING**  
I-A

## SUMMARY

1127 S Jason is a 4,000 SF industrial unit in Ruby Hill featuring two 10' drive-in doors and 12' clear span warehouse, ideal for contractors, service companies, and distribution. Excellent I-25 & Santa Fe access off Mississippi corridor. The office section is about 10-20% of the space and includes 2 restrooms and two separate entrances.

## HIGHLIGHTS

- Two 10' drive in doors
- 12' clear span warehouse
- Floor drains
- Quick access to Santa Fe and I-25
- Ideal office to warehouse split

## NORTHPEAK TEAM

**DREW WILLIAMS**

Advisor

(303) 917-5232

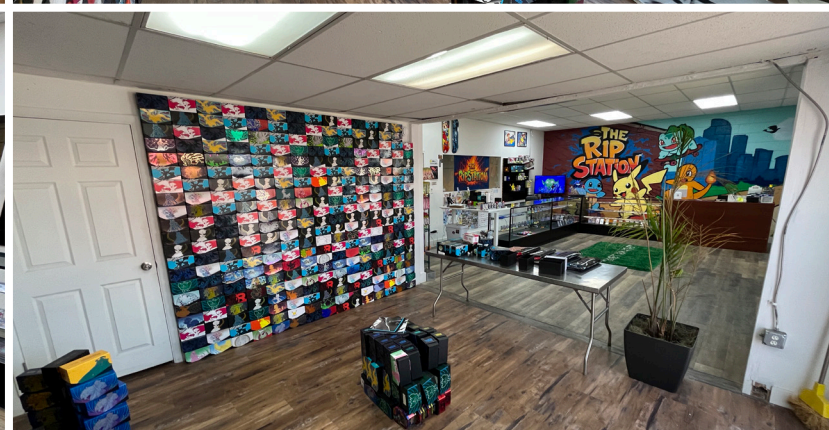
Drew@NorthPeakCRE.com



**NORTHPEAK**<sup>®</sup>  
COMMERCIAL ADVISORS

# INDUSTRIAL FOR LEASE

1127 S Jason St. | Denver, CO 80223



## NORTHPEAK TEAM

**DREW WILLIAMS**

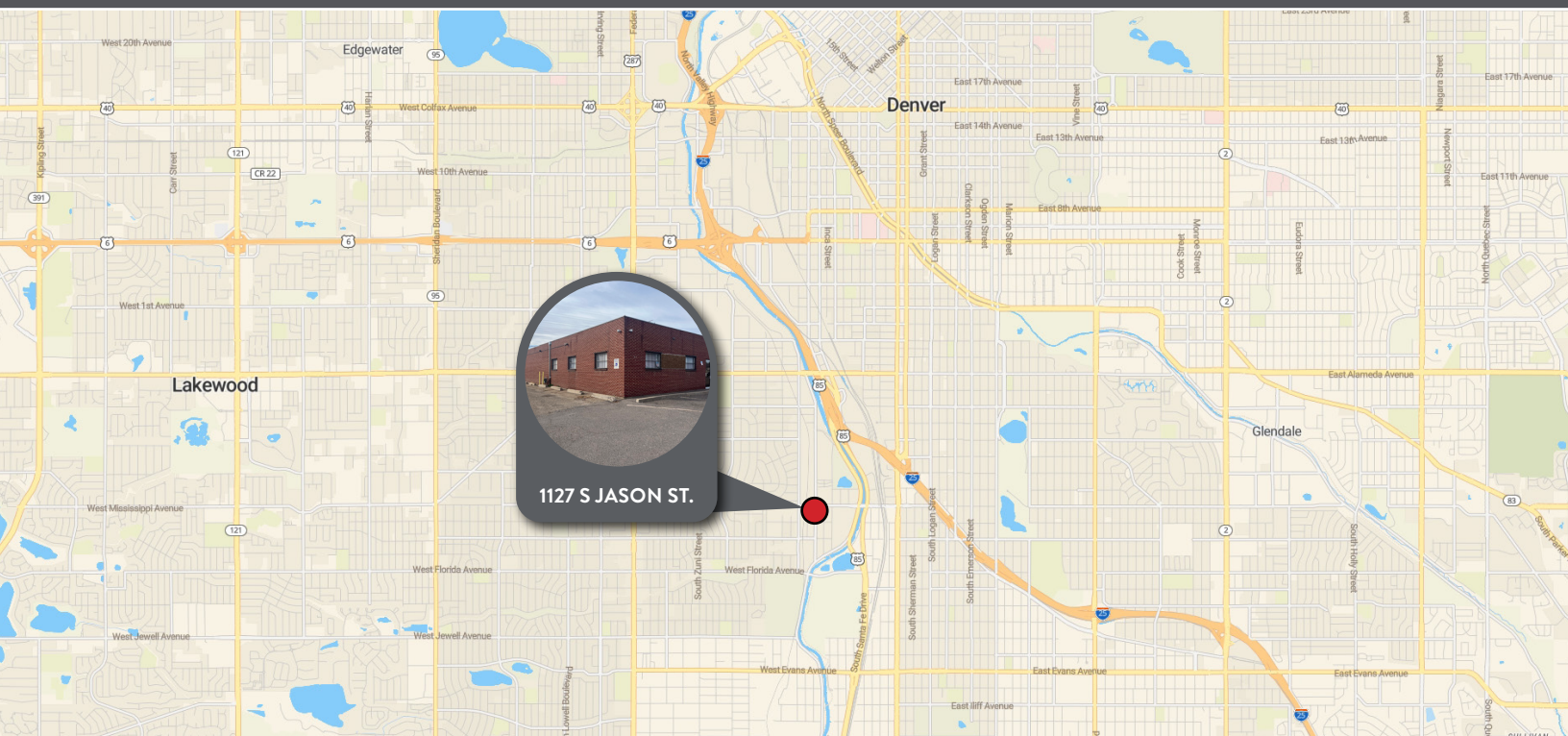
Advisor

(303) 917-5232

[Drew@NorthPeakCRE.com](mailto:Drew@NorthPeakCRE.com)

# INDUSTRIAL FOR LEASE

1127 S Jason St. | Denver, CO 80223



## NORTHPEAK TEAM

**DREW WILLIAMS**

Advisor

(303) 917-5232

Drew@NorthPeakCRE.com