

RETAIL FOR SALE - \$1,200,000

421 North High St. Hillsboro, OH 45133



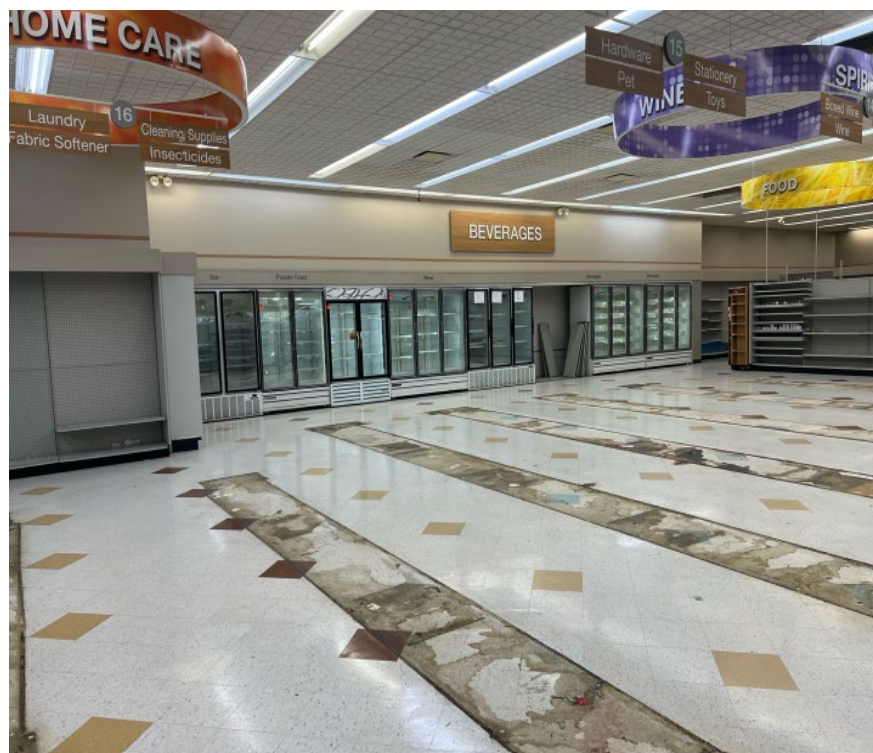
OHLQ NOW ACCEPTING APPLICATIONS



Property is also For Lease at \$12/SF NNN

Property Features

- An OHLQ (Ohio Liquor License) was previously held at this location.
- Built in 1996
- **10,005 SF ± (Divisible)**
- Property includes an open floorplan & excellent mechanicals.
- Dedicated drive-thru window with overhang.
- Ample parking with 55 surface spaces.

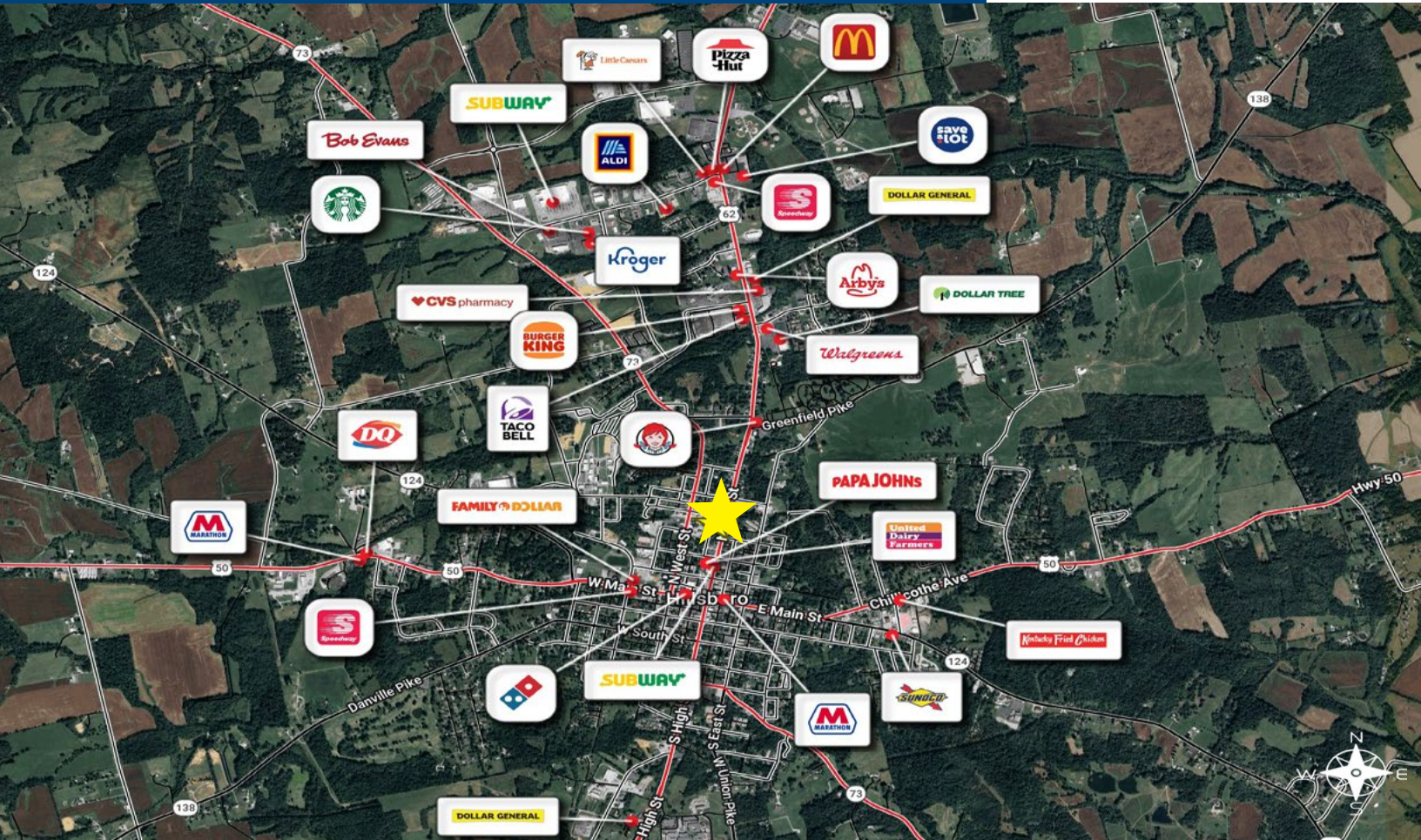


RETAIL FOR SALE - \$1,200,000

421 North High St. Hillsboro, OH 45133



Commercial Real Estate Solutions®



Location Highlights

- Located in Downtown Hillsboro off of North High St., which is the main route through the city.
- The nearest package OHLQ store is 27 miles away.

Traffic Counts

 14,713+ VPD on N High St.

 11,620+ VPD on W Main St.



RETAIL FOR SALE - \$1,200,000

421 North High St. Hillsboro, OH 45133



Commercial Real Estate Solutions®

Key Facts

421 N High St, Hillsboro, Ohio, 45133

Rings: 1, 3, 5 mile radii

KEY FACTS

5 miles

11,466

Population

42.4

Median Age



2.3

Average Household Size

\$58,784

Median Household Income

BUSINESS

5 miles



679

Total Businesses



7,932

Total Employees

EDUCATION

5 miles

10%

No High School Diploma



40%

High School Graduate



31%

Some College



19%

Bachelor's/Grad/Pr of Degree

EMPLOYMENT

5 miles



52.2%

White Collar



29.6%

Blue Collar



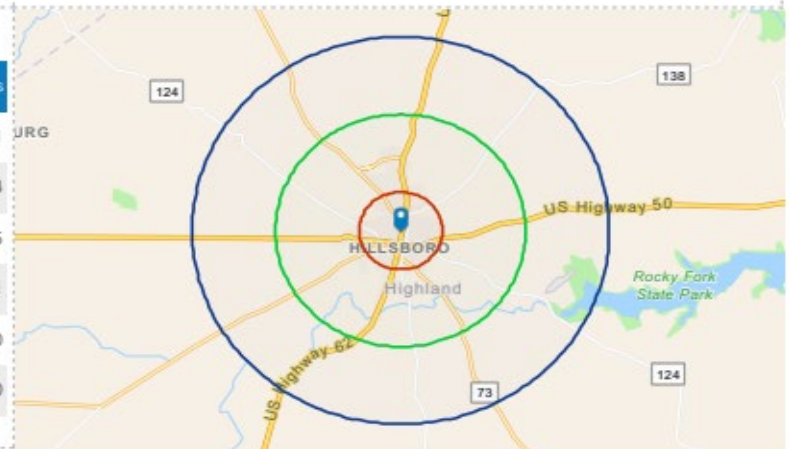
18.2%

Services

4.6%

Unemployment Rate

Variables	1 mile	3 miles	5 miles
2023 Per Capita Income	\$30,401	\$30,888	\$31,191
2023 Median Household Income	\$52,203	\$55,236	\$58,784
2023 Average Household Income	\$69,298	\$71,304	\$74,415
2028 Per Capita Income	\$32,649	\$33,200	\$33,611
2028 Median Household Income	\$56,929	\$60,052	\$62,540
2028 Average Household Income	\$73,837	\$76,147	\$79,680



This infographic contains data provided by Esri, Esri-Data Axle. The vintage of the data is 2025, 2030.

© 2026 Esri

Equity Broker Contact

Jim Reckers, CCIM

Vice President

513.842.9527

jreckers@equity.net

