



EST. 1871.

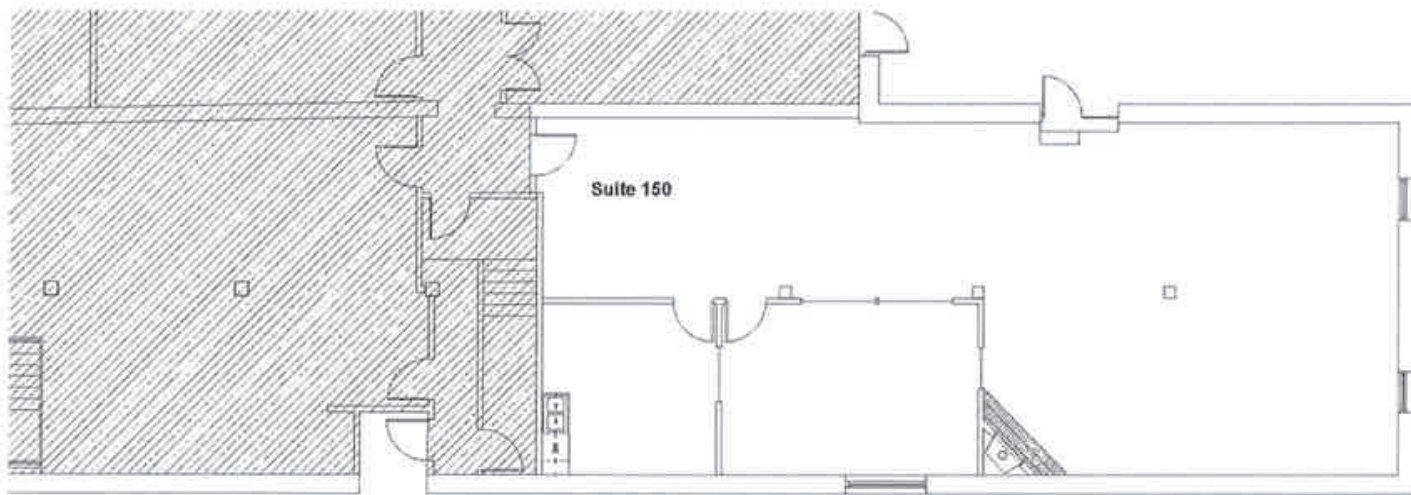
DENVER EX CHANGE COLO.

WAZEE

CHANGE

1900 WAZEE STREET, LODO

SUITE 150
1,931 RSF



FOR MORE INFORMATION, CONTACT:

JAMIE GARD
 Vice Chairman
 tel. 303-260-4341
 jamie.gard@nmrk.com

WHITNEY HAKE
 Senior Managing Director
 tel. 303-260-4202
 whitney.hake@nmrk.com

GRACE LESSARD
 Associate Director
 tel. 303-260-4210
 grace.lessard@nmrk.com

NEWMARK

