

FOR SALE

1206 MAIN AVE, CRETE, NE 68333

RETAIL | 4,820 SF | \$550,000



 **LEE &
ASSOCIATES**
COMMERCIAL REAL ESTATE SERVICES

PRESENTED BY:

Katy Martin
402.617.8508

kmartin@lee-associates.com

Ammar Abu-Hamda
402.430.1982

abu@lee-associates.com

Omaha: 12020 Shamrock Plaza, Suite 333 | Omaha, NE 68154 | 531.721.2888

Lincoln: 200 South 21st Street, Suite A113 | Lincoln, NE 68510 | 531.721.2888



FOR SALE

1206 MAIN AVE, CRETE, NE 68333

Retail | 4,820 SF | \$550,000



PROPERTY DESCRIPTION

Located at 1206 Main Ave in Crete, Nebraska, this charming and well designed commercial space is perfect for those seeking a versatile venue with character. This one of a kind event space has plenty of character, and a catering kitchen for commercial use. With its spacious layout and high-quality finishes, it's a plug-and-play opportunity for an event space to thrive in a charming small-town setting.

PROPERTY HIGHLIGHTS

- Catering commercial kitchen, ready for immediate use
- Spacious, open-concept design, ideal for events or studio work
- Sale Leaseback Opportunity
- High-quality finishes and flexible space, designed for various business types

LOCATION DESCRIPTION

Nestled in Crete, just twenty minutes from South Lincoln, a welcoming town known for its small-town charm and supportive local businesses. A short drive from major highways, offering easy access to surrounding communities.

OFFERING SUMMARY

Sale Price:	\$550,000
Lot Size:	4,728 SF
Building Size:	4,820 SF

CONTACT

Katy Martin

kmartin@lee-associates.com
C 402.617.8508

Ammar Abu-Hamda

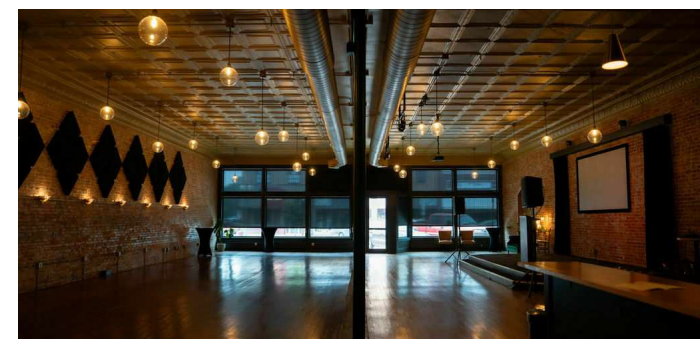
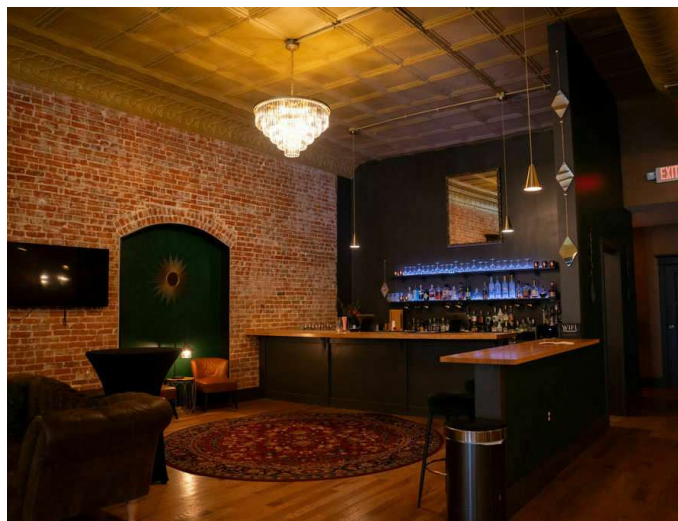
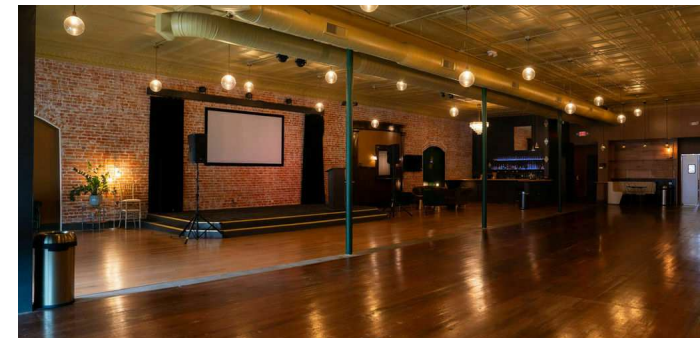
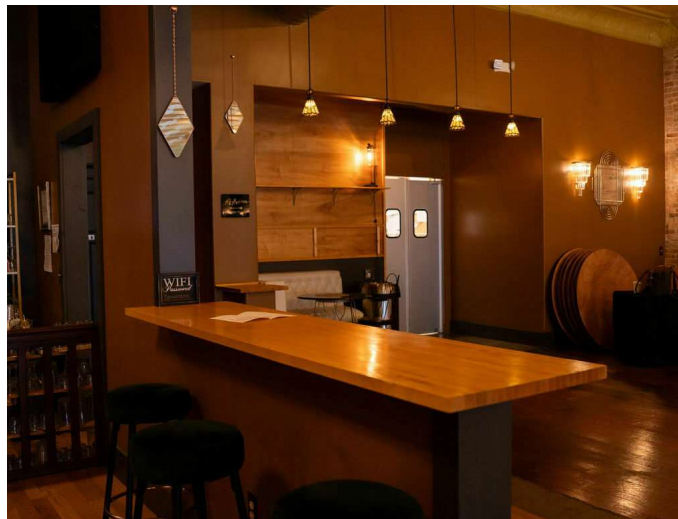
abu@lee-associates.com
C 402.430.1982

We obtained the information above from sources we believe to be reliable. However, we have not verified its accuracy and make no guarantee, warranty or representation about it. It is submitted subject to the possibility of errors, omissions, change of price, rental or other conditions, prior sale, lease or financing, or withdrawal without notice. We include projections, opinions, assumptions or estimates for example only, and they may not represent current or future performance of the property. You and your tax and legal advisors should conduct your own investigation of the property and transaction.

FOR SALE

1206 MAIN AVE, CRETE, NE 68333

Retail | 4,820 SF | \$550,000



CONTACT

Katy Martin

kmartin@lee-associates.com

C 402.617.8508

Ammar Abu-Hamda

abu@lee-associates.com

C 402.430.1982

We obtained the information above from sources we believe to be reliable. However, we have not verified its accuracy and make no guarantee, warranty or representation about it. It is submitted subject to the possibility of errors, omissions, change of price, rental or other conditions, prior sale, lease or financing, or withdrawal without notice. We include projections, opinions, assumptions or estimates for example only, and they may not represent current or future performance of the property. You and your tax and legal advisors should conduct your own investigation of the property and transaction.

FOR SALE

1206 MAIN AVE, CRETE, NE 68333

Retail | 4,820 SF | \$550,000



COMMERCIAL REAL ESTATE SERVICES



CONTACT

Katy Martin

kmartin@lee-associates.com

C 402.617.8508

Ammar Abu-Hamda

abu@lee-associates.com

C 402.430.1982

We obtained the information above from sources we believe to be reliable. However, we have not verified its accuracy and make no guarantee, warranty or representation about it. It is submitted subject to the possibility of errors, omissions, change of price, rental or other conditions, prior sale, lease or financing, or withdrawal without notice. We include projections, opinions, assumptions or estimates for example only, and they may not represent current or future performance of the property. You and your tax and legal advisors should conduct your own investigation of the property and transaction.

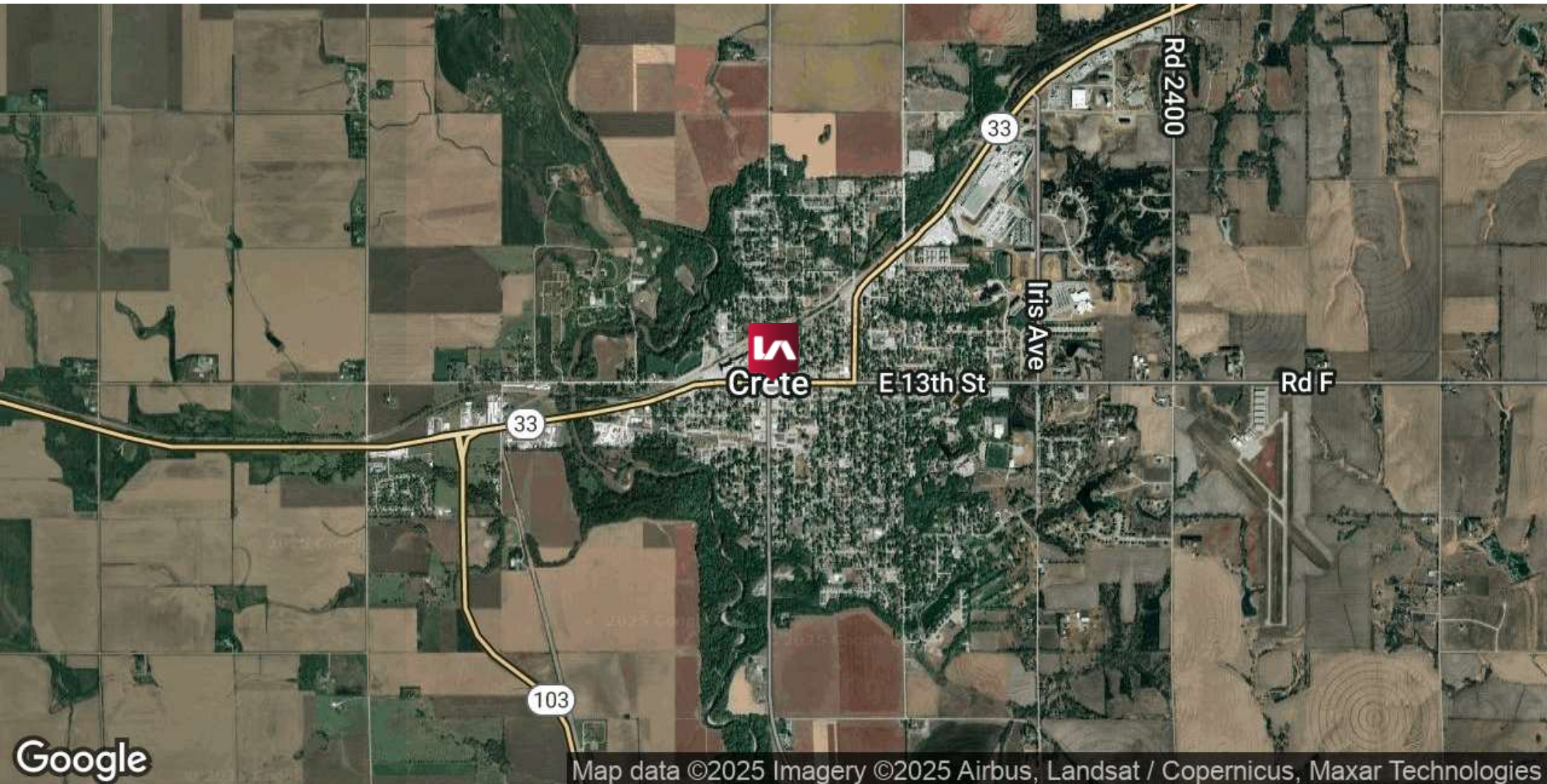
FOR SALE

1206 MAIN AVE, CRETE, NE 68333

Retail | 4,820 SF | \$550,000



COMMERCIAL REAL ESTATE SERVICES



Map data ©2025 Imagery ©2025 Airbus, Landsat / Copernicus, Maxar Technologies

CONTACT

Katy Martin

kmartin@lee-associates.com

C 402.617.8508

Ammar Abu-Hamda

abu@lee-associates.com

C 402.430.1982

We obtained the information above from sources we believe to be reliable. However, we have not verified its accuracy and make no guarantee, warranty or representation about it. It is submitted subject to the possibility of errors, omissions, change of price, rental or other conditions, prior sale, lease or financing, or withdrawal without notice. We include projections, opinions, assumptions or estimates for example only, and they may not represent current or future performance of the property. You and your tax and legal advisors should conduct your own investigation of the property and transaction.

Omaha: 12020 Shamrock Plaza, Suite 333 | Omaha, NE 68154 | 531.721.2888

Lincoln: 200 South 21st Street, Suite A113 | Lincoln, NE 68510 | 531.721.2888



FOR SALE

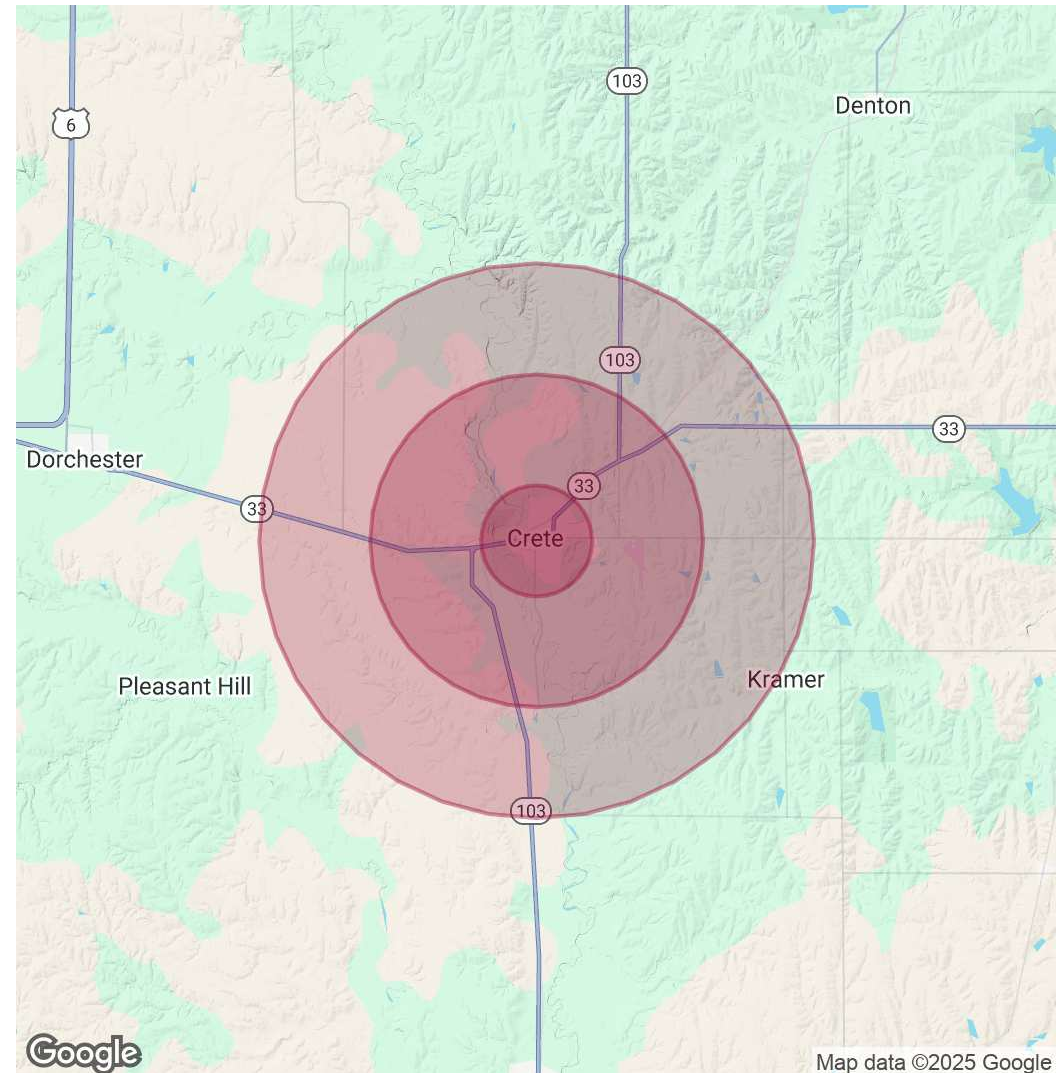
1206 MAIN AVE, CRETE, NE 68333

Retail | 4,820 SF | \$550,000

POPULATION	1 MILE	3 MILES	5 MILES
Total Population	6,007	7,455	7,983
Average Age	35	36	36
Average Age (Male)	34	34	35
Average Age (Female)	37	37	37

HOUSEHOLDS & INCOME	1 MILE	3 MILES	5 MILES
Total Households	1,982	2,455	2,650
# of Persons per HH	3	3	3
Average HH Income	\$86,403	\$87,949	\$88,387
Average House Value	\$165,209	\$168,365	\$175,184

Demographics data derived from AlphaMap



CONTACT

Katy Martin

kmartin@lee-associates.com
C 402.617.8508

Ammar Abu-Hamda

abu@lee-associates.com
C 402.430.1982

We obtained the information above from sources we believe to be reliable. However, we have not verified its accuracy and make no guarantee, warranty or representation about it. It is submitted subject to the possibility of errors, omissions, change of price, rental or other conditions, prior sale, lease or financing, or withdrawal without notice. We include projections, opinions, assumptions or estimates for example only, and they may not represent current or future performance of the property. You and your tax and legal advisors should conduct your own investigation of the property and transaction.