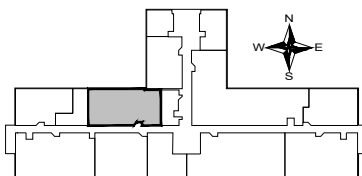


Suite 211 - 2,524 RSF  
 Northwest Medical  
 2210 Barron Road  
 Poplar Bluff, MO 63901

KEY PLAN - SECOND FLOOR



**Saint Francis**  
**HEALTHCARE**  
 211 Saint Francis Drive  
 Cape Girardeau, MO 63703  
 Facilities Management  
 (573) 331-5200

Scale:	None
Date:	2-6-2023
Drawn by:	DJA
Sheet #:	<b>A2.7</b>