

OLYMPUS HILLS

FOR LEASE



PROPERTY DETAILS

3900 S Wasatch Boulevard, Salt Lake City, UT 84124

- 1,500 SF available
- Grocery anchored complex
- Located in an established retail center
- I-215 exposure (70,195 ADT)
- Located in a high income residential area
- Ease of access to Wasatch Boulevard

2025 DEMOS



EST. POPULATION

1 MILE » 11,097
3 MILE » 62,533
5 MILE » 194,875



EST. HOUSEHOLDS

1 MILE » 3,980
3 MILE » 23,567
5 MILE » 81,013



EST. DAYTIME POPULATION

1 MILE » 5,567
3 MILE » 32,038
5 MILE » 104,905



EST. AVERAGE HH INCOME

1 MILE » \$229,170
3 MILE » \$187,372
5 MILE » \$151,972



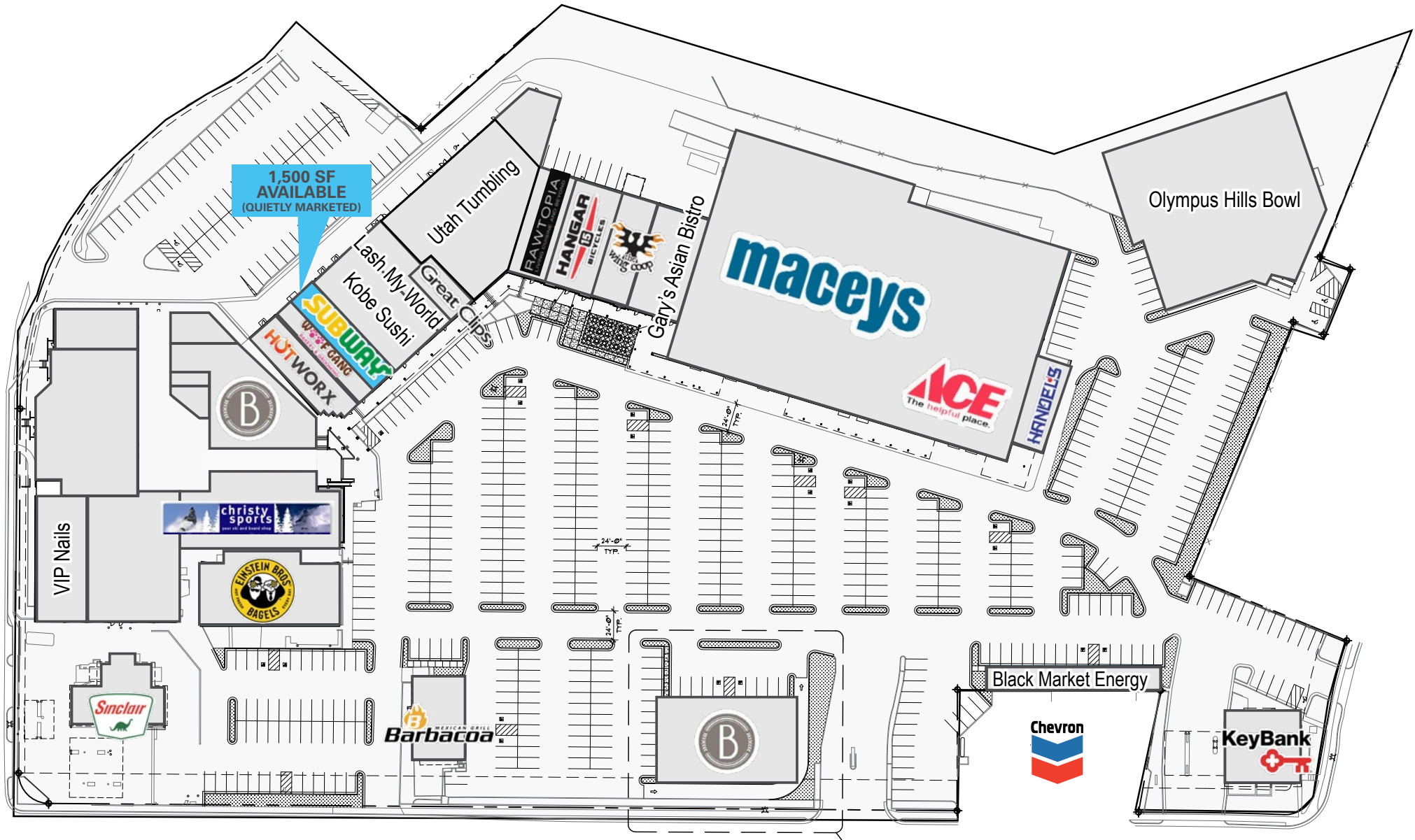
STEPHANIE BURANEK
sburane@newmarkmw.com
direct 801.755.1191
[View Profile](#)

RUSS HARRIS
rharris@newmarkmw.com
direct 801.652.4990
[View Profile](#)

J.R. MOORE
jrmoore@newmarkmw.com
direct 801.550.2030
[View Profile](#)

DEVAN MOORE
dmoore@newmarkmw.com
direct 801.831.1421
[View Profile](#)

**FULL SERVICE
COMMERCIAL REAL ESTATE**
312 East South Temple
Salt Lake City, Utah 84111
Office 801.456.8800
www.newmarkmw.com



STEPHANIE BURANEK
 sburanek@newmarkmw.com
 direct 801.755.1191
[View Profile](#)

RUSS HARRIS
 rharris@newmarkmw.com
 direct 801.652.4990
[View Profile](#)

J.R. MOORE
 jrmoore@newmarkmw.com
 direct 801.550.2030
[View Profile](#)

DEVAN MOORE
 dmoore@newmarkmw.com
 direct 801.831.1421
[View Profile](#)

**FULL SERVICE
 COMMERCIAL REAL ESTATE**
 312 East South Temple
 Salt Lake City, Utah 84111
 Office 801.456.8800
www.newmarkmw.com

1,500 SF
AVAILABLE
(QUIETLY MARKETED)



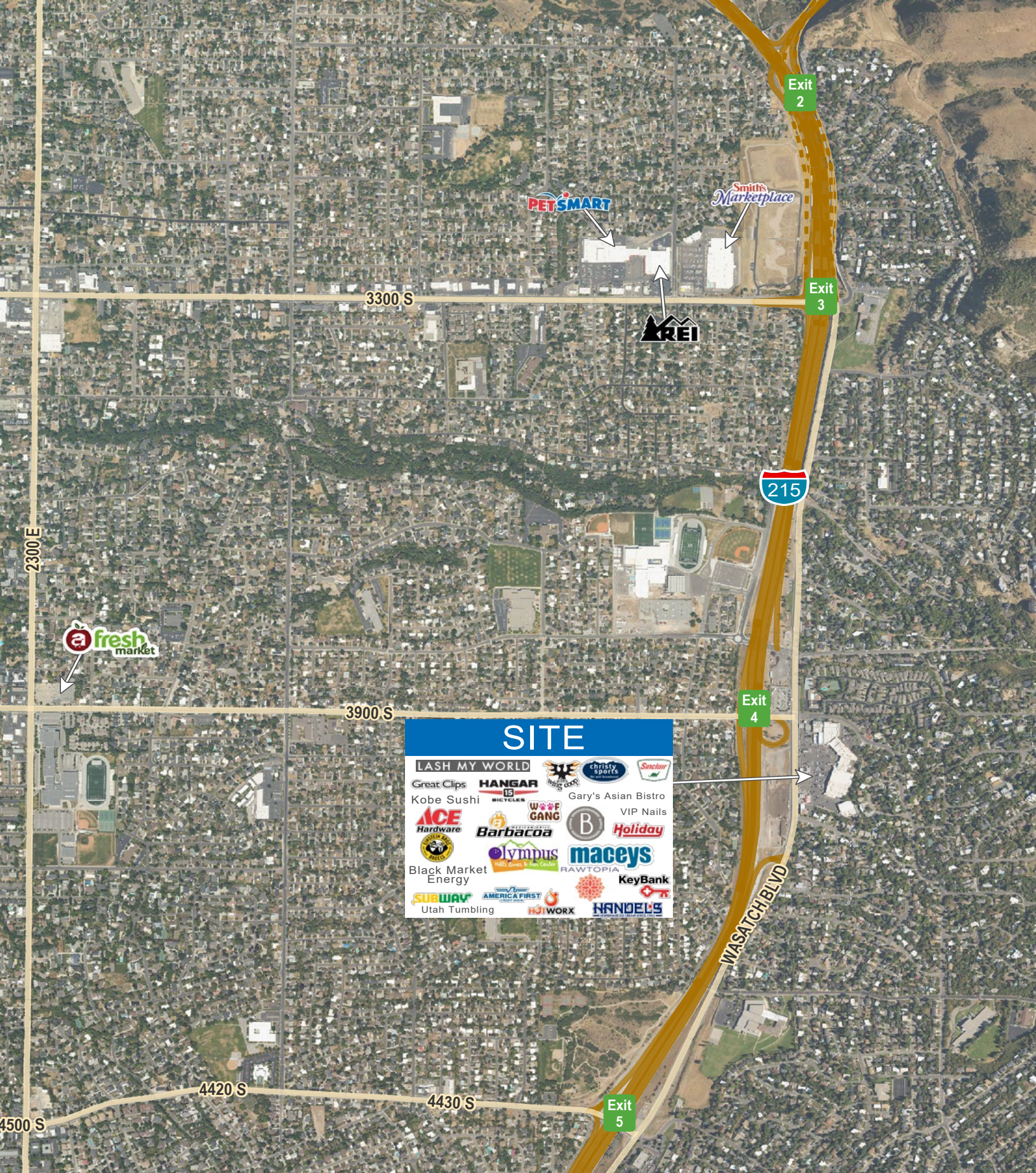
STEPHANIE BURANEK
sburanek@newmarkmw.com
direct 801.755.1191
[View Profile](#)

RUSS HARRIS
rharris@newmarkmw.com
direct 801.652.4990
[View Profile](#)

J.R. MOORE
jrmoore@newmarkmw.com
direct 801.550.2030
[View Profile](#)

DEVAN MOORE
dmoore@newmarkmw.com
direct 801.831.1421
[View Profile](#)

**FULL SERVICE
COMMERCIAL REAL ESTATE**
312 East South Temple
Salt Lake City, Utah 84111
Office 801.456.8800
www.newmarkmw.com



SITE

LASH MY WORLD

Great Clips HANGAR christy sports Sinclear
 Kobe Sushi HANGAR Bicycles Gary's Asian Bistro
 ACE Hardware WAVE GANG B VIP Nails
 Black Market Energy Olympus maceys RAWTOPIA
 SUBWAY AMERICA FIRST KeyBank
 Utah Tumbling HOTWORX HANDEL'S



STEPHANIE BURANEK
 sburane@newmarkmw.com
 direct 801.755.1191
[View Profile](#)

RUSS HARRIS
 rharris@newmarkmw.com
 direct 801.652.4990
[View Profile](#)

J.R. MOORE
 jrmoore@newmarkmw.com
 direct 801.550.2030
[View Profile](#)

DEVAN MOORE
 dmoore@newmarkmw.com
 direct 801.831.1421
[View Profile](#)

**FULL SERVICE
 COMMERCIAL REAL ESTATE**
 312 East South Temple
 Salt Lake City, Utah 84111
 Office 801.456.8800
www.newmarkmw.com