

FOR SALE OR LEASE

Michelle Belinfante
(770) 481-9931
Email: michelle@tlmgusa.com

ALMA, GA

the LEASING & MANAGEMENT GROUP inc
COMMERCIAL REAL ESTATE SPECIALISTS

2ND
GENERATION
RESTAURANT



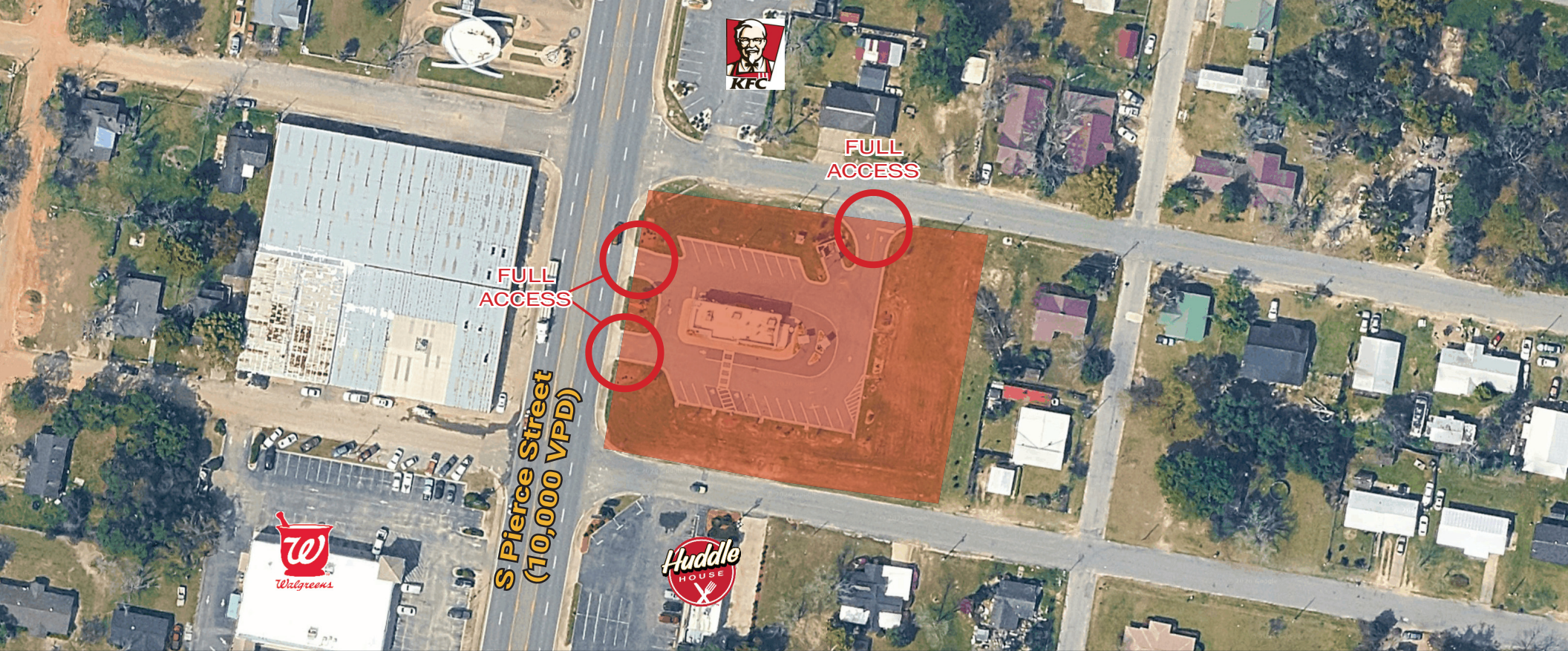
2025 DEMOGRAPHIC SUMMARY

	10-Minutes	20-Minutes	30-Minutes
Est. Population	6,181	12,088	31,063
Average HH Income	\$ 65,963	\$ 72,268	\$ 72,352
Est. Households	2,373	4,476	11,195
Est. # of Employees	3,278	4,161	10,144

Map data ©2026 Google

2,146 SF FORMER RESTAURANT WITH DRIVE-THRU

606 S PIERCE ST | ALMA, GA 31510



ALMA, GA
606 S PIERCE STREET

FREESTANDING DRIVE-THRU LOCATION FRONTING U.S. Route 23/S Pierce Street

- 2nd generation restaurant space
- Excellent visibility with frontage on U.S. Route 23
- 2,146 SF building on 1.57 Acres with a Drive Thru.
- Freestanding street sign available.
- 24 parking spaces.

