

ILIFF BUSINESS PARK

FLEX SPACE FOR LEASE



7800

E. ILIFF AVE.

UNIT J

DENVER, CO 80231



AVAILABILITY INFORMATION

AVAILABLE:	Immediately
SIZE:	2,321 SF
OFFICE BUILD-OUT:	40%
CLEAR HEIGHT:	+13'
LOADING:	One (1) Drive-In Door
RATE:	\$13.50/SF NNN
EXPENSES:	\$5.70/SF (2025)
ELECTRICAL:	200 Amp, 3-Phase (To be Verified by Electrician)

HIGHLIGHTS

- Iliff Business Park offers excellent individual signage
- Abundant parking and great access to I-25 and I-225
- Located in Unincorporated Arapahoe County
- Aggressive and creative ownership
- Retail identity
- Four (4) building complex allows for tenant expansion

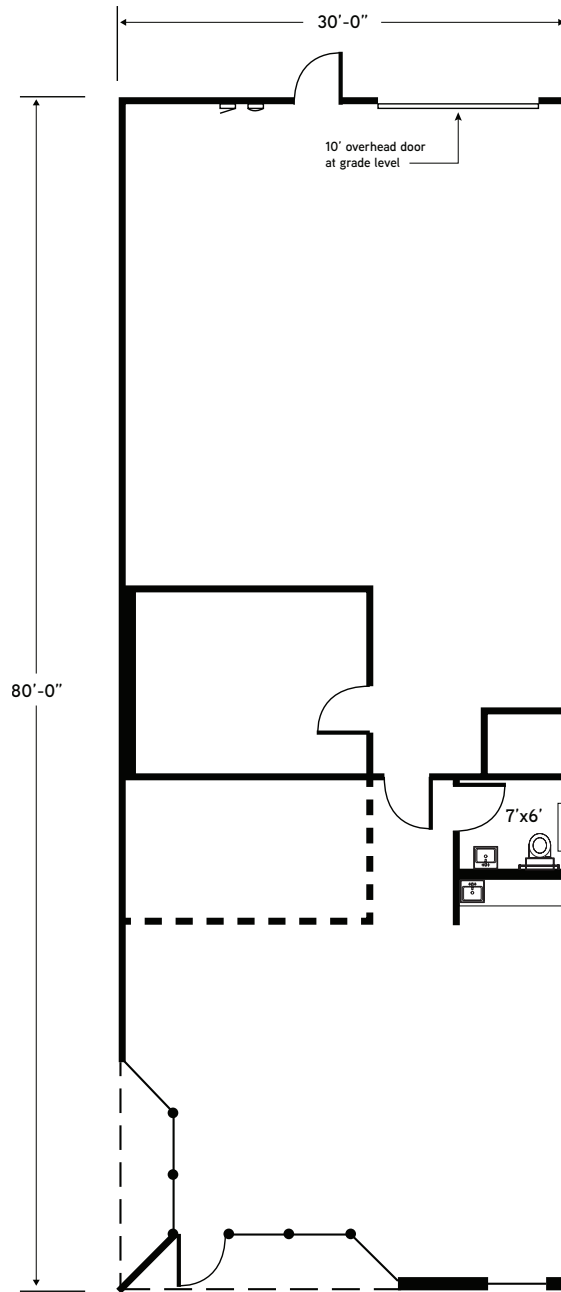


CODY SHEESLEY
+1 303 309 3520
cody.sheesley@colliers.com

T.J. SMITH, SIOR
+1 303 283 4576
tj.smith@colliers.com



SITE PLAN



COLLIERS DENVER

4643 S. Ulster Street | Suite 1000 | Denver, CO 80237
+1 303 745 5800 fax +1 303 745 5888 | www.colliers.com/denver

No warranty or representation is made as to the accuracy of the foregoing information.
Terms of sale or lease and availability are subject to change or withdrawal without notice.

BROKER DISCLOSURE

