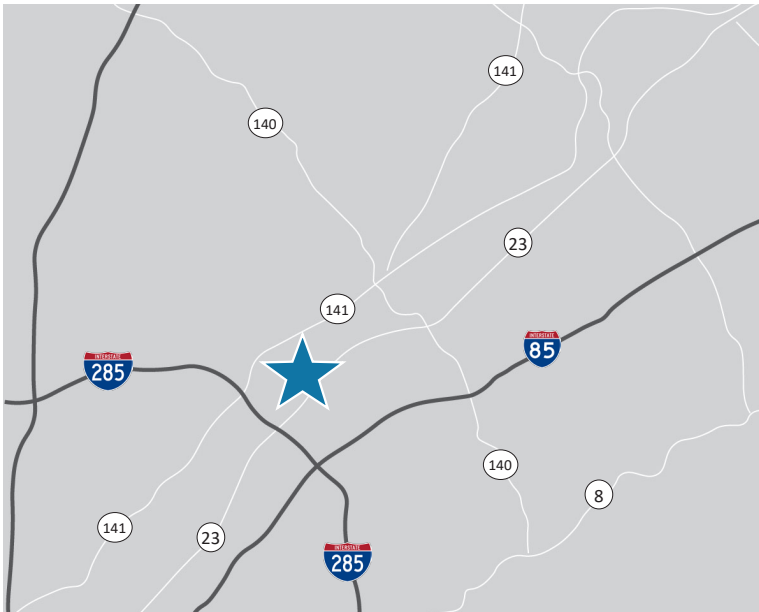


10,000 SF FOR LEASE

Bankers Industrial

2775 Bankers Industrial Dr, Suite D, Doraville, GA 30360



Suite Information

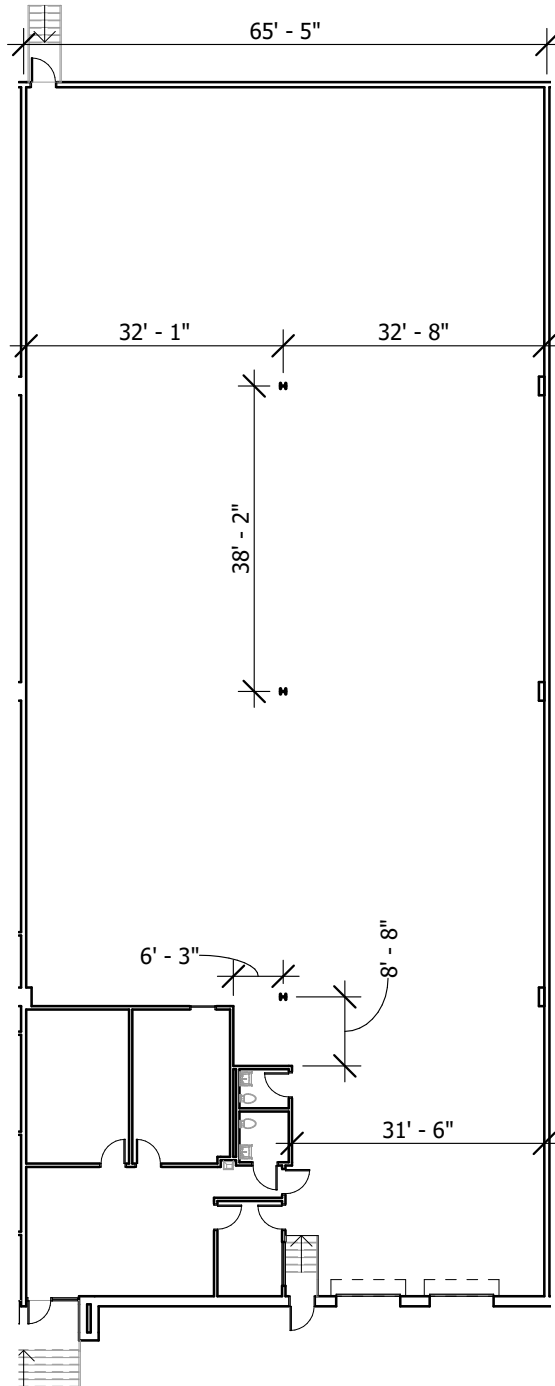
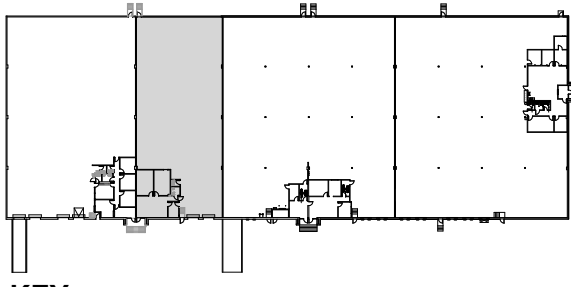
Building SF	65,000 SF
Available SF	10,000 SF
Available Office SF	1,184 SF
Clear Height	21'
Column Spacing	32'8" x 38'2"
Dock Doors	Two (2)
Sprinklers	Wet
Lighting	LED

Joseph Kriss
678.362.4641
josephk@seefriedproperties.com

Tripp Ausband
404.256.5180
tausband@seefriedproperties.com



Suite D



Joseph Kriss
678.362.4641
josephk@seefriedproperties.com

Tripp Ausband
404.256.5180
tausband@seefriedproperties.com



Access Map



Joseph Kriss
678.362.4641
josephk@seefriedproperties.com

Tripp Ausband
404.256.5180
tausband@seefriedproperties.com

