

8121 GRATIOT AVENUE
DETROIT, MICHIGAN

RETAIL FOR SALE
2,508 Square Feet Available



**SIGNATURE
ASSOCIATES**
KNOW SIGNATURE | KNOW RESULTS



PROPERTY FEATURES

- 2,508 square feet available
- 12' clear height
- Former bank branch
- Ample parking
- Sale Price: \$199,000 (\$79.35/sq. ft.)



For more information, please contact:

CHRIS MONSOUR
(248) 948 0107
cmonsour@signatureassociates.com

JOE STACK
(248) 359 0615
jstack@signatureassociates.com

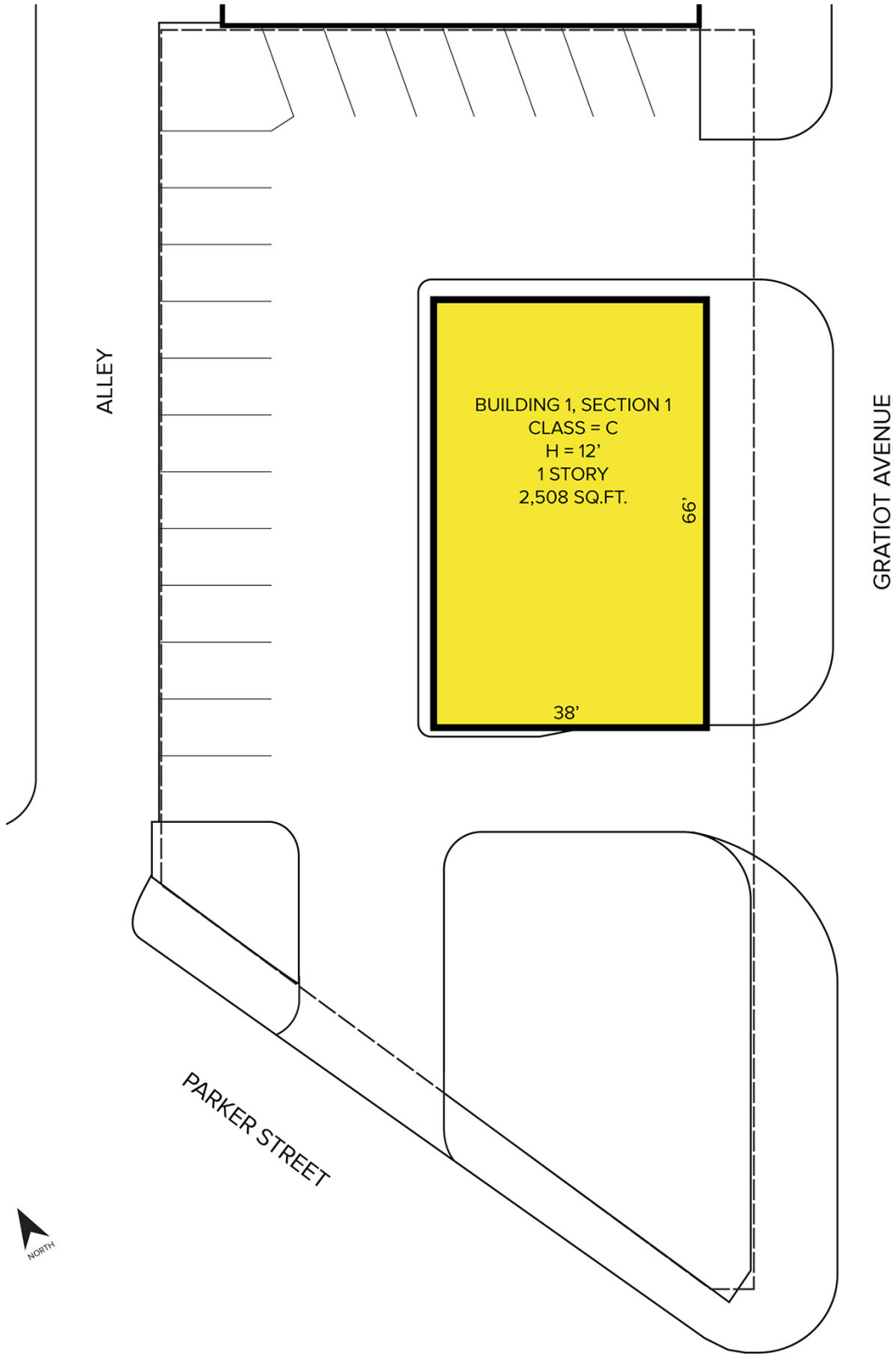
SIGNATURE ASSOCIATES
One Towne Square, Suite 1200
Southfield, MI 48076
www.signatureassociates.com

8121 Gratiot Avenue – Detroit, Michigan

Retail For Sale

2,508
Square Feet
AVAILABLE

Site Plan



For more information, please contact:

CHRIS MONSOUR
(248) 948 0107
cmonsour@signatureassociates.com

JOE STACK
(248) 359 0615
jstack@signatureassociates.com

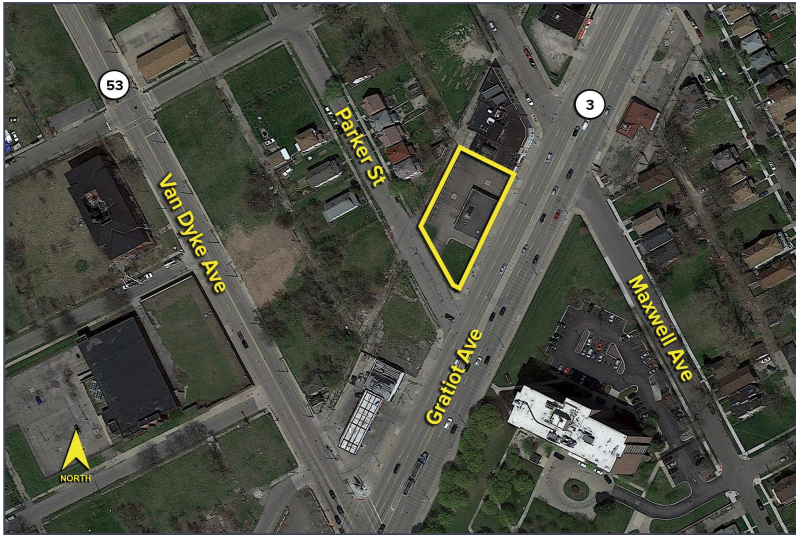
SIGNATURE ASSOCIATES
One Towne Square, Suite 1200
Southfield, MI 48076
www.signatureassociates.com

Information is subject to verification and no liability for errors or omissions is assumed. Price is subject to change and listing withdrawal.

8121 Gratiot Avenue – Detroit, Michigan

Retail For Lease

2,508
Square Feet
AVAILABLE

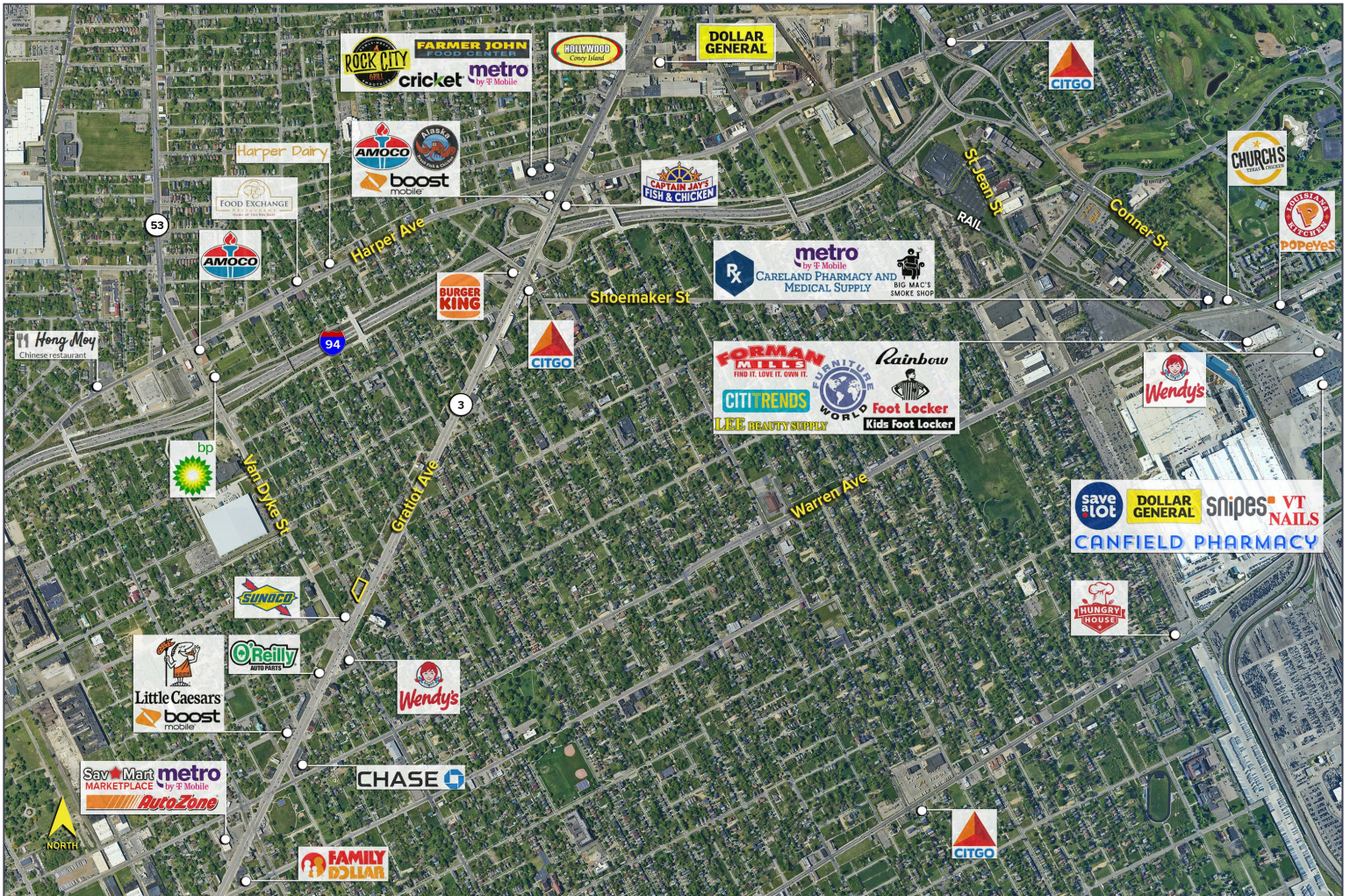


DEMOGRAPHICS

	POPULATION	MED. HH INCOME
1 MILE	9,923	\$36,142
3 MILE	107,096	\$38,562
5 MILE	287,884	\$45,786

TRAFFIC COUNTS (TWO-WAY)

25,121	Gratiot Ave. S. of Van Dyke
23,315	Gratiot Ave. N. of Van Dyke
7,788	Van Dyke NW. of Gratiot Ave.
7,363	Van Dyke SE. of Gratiot Ave.



For more information, please contact:

CHRIS MONSOUR
(248) 948 0107
cmonsour@signatureassociates.com

JOE STACK
(248) 359 0615
jstack@signatureassociates.com

SIGNATURE ASSOCIATES
One Towne Square, Suite 1200
Southfield, MI 48076
www.signatureassociates.com